

Abb. 2. Haus Axen in Lindholm. 1667.

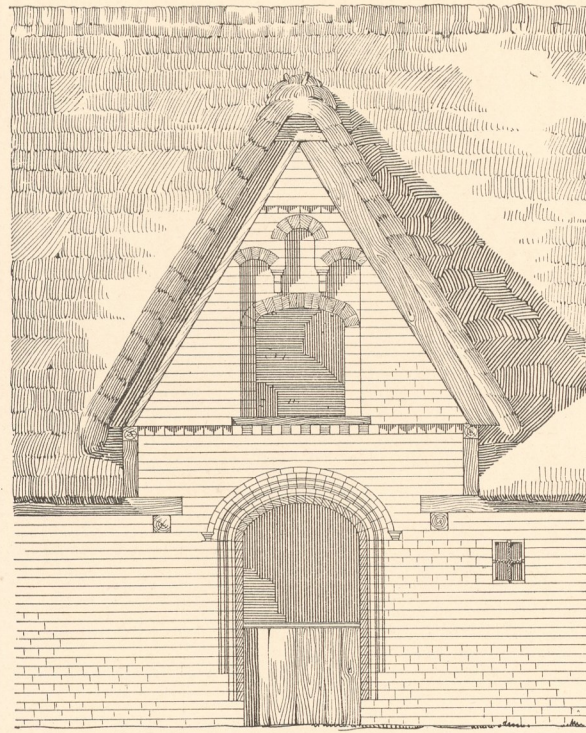


Abb. 1. Haus Axen in Lindholm.

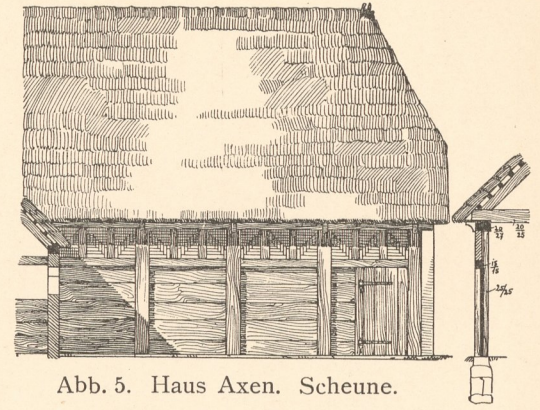


Abb. 5. Haus Axen. Scheune.

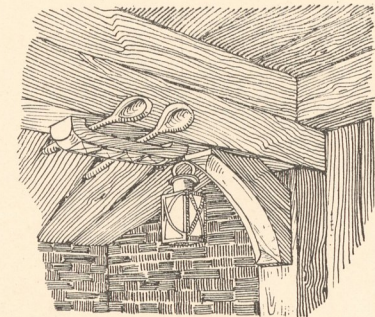


Abb. 6. Schnitt zu Abb. 5.

Ecke der Küche.

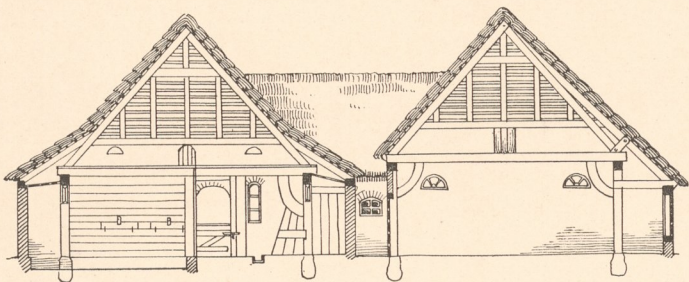


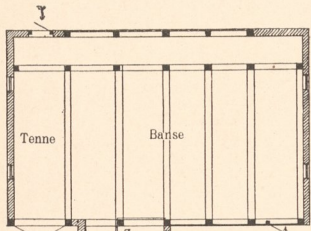
Abb. 3. Haus Axen in Lindholm. Querschnitt.

Massstab zu Abb. 5.

Massstab zu Abb. 3 u. 4.

Massstab zu Abb. 1.

Abb. 10. Aus Haus Axen in Lindholm.



ANNO 1670

1647

KYNKN

1751

Abb. 8 und 9. Ziegel.

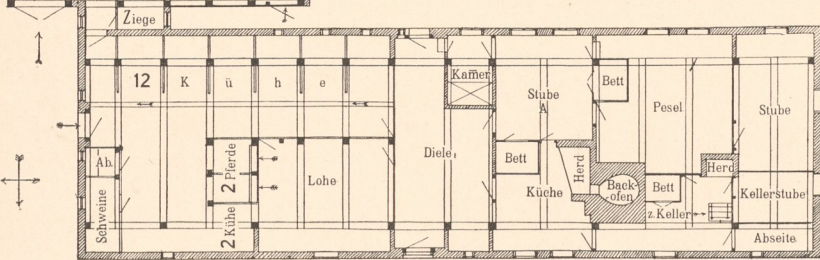


Abb. 7. Haus Axen in Lindholm.

Massstab zu Abb. 7, 11 und 14.

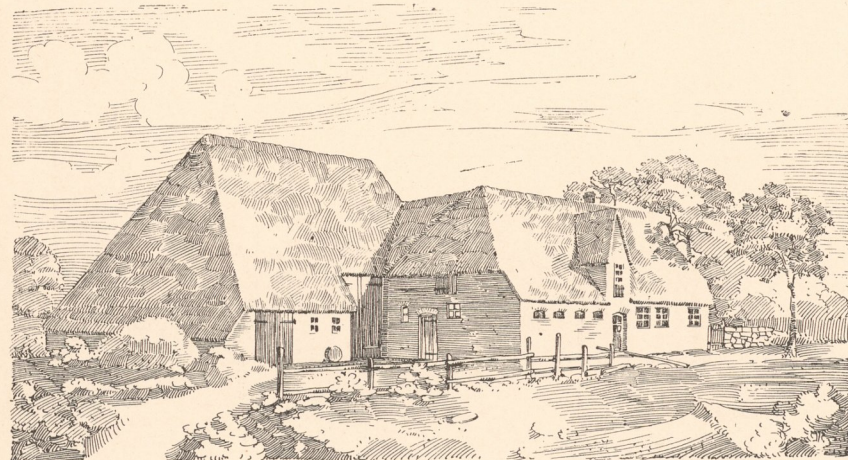


Abb. 15. Haus Andresen in Boldixum auf Föhr.

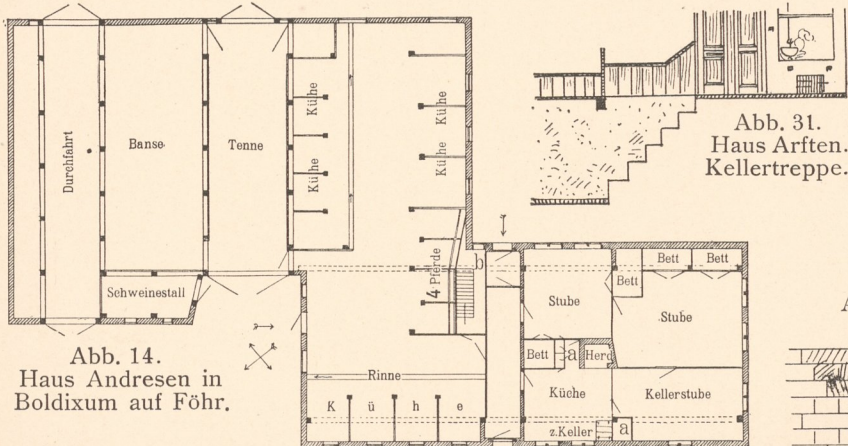


Abb. 14. Haus Andresen in Boldixum auf Föhr.

a) Schränke, b) Futterraum.

Abb. 31. Haus Arften. Kellertreppe.

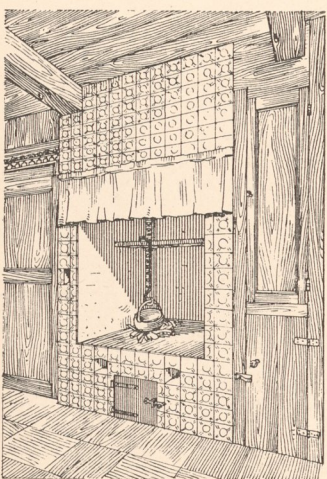


Abb. 21. Küche.

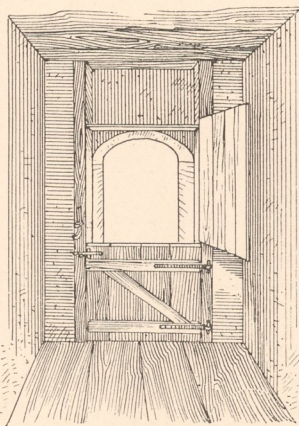


Abb. 22. Haustür.

Abb. 21 u. 22. Aus Haus Nanning Arften in Boldixum auf Föhr. 1684.

Augen. von Stoffers und Auhagen.

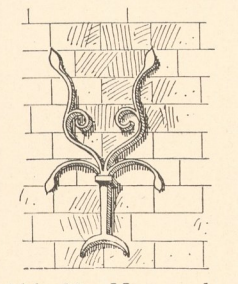


Abb. 29. Maueranker aus Westerland.

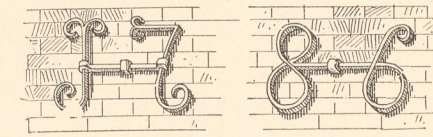


Abb. 27. Maueranker aus Keitum.

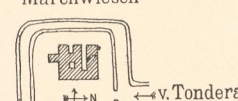
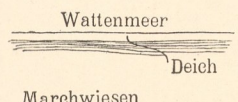


Abb. 26. Hof Gross-Bombüll.

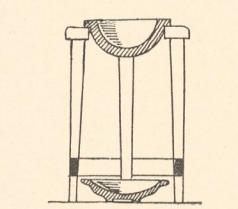


Abb. 25. Tropfstein aus Gross-Bombüll.

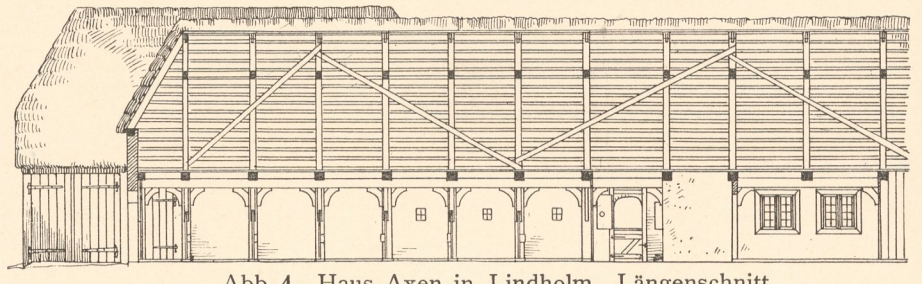


Abb. 4. Haus Axen in Lindholm. Längenschnitt.

Abb. 32.

Abb. 33.

Abb. 32 bis 34. Beschläge aus Morsum.

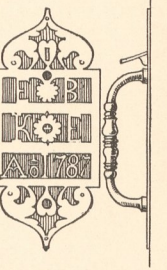


Abb. 34.



Abb. 12. Haus Hansen in Klockries. 1634. 1:100.

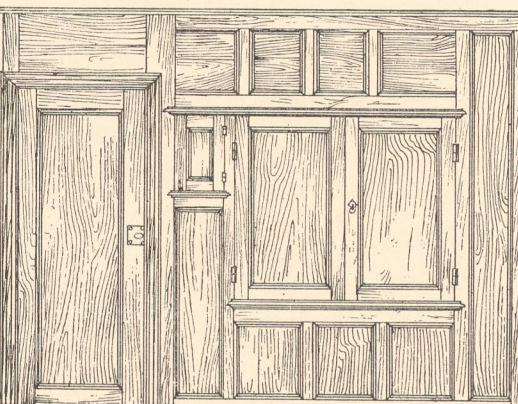


Abb. 16. Aus Haus Andresen in Boldixum. Bettwand.

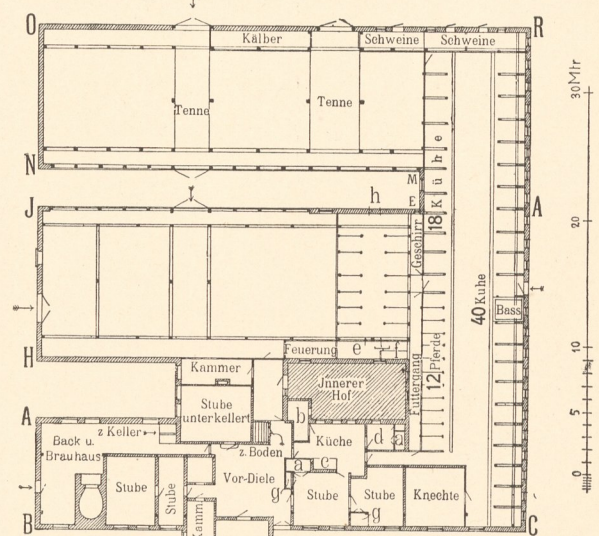


Abb. 24. Hof Gross-Bombüll.

a. Bett. b. Speisek. c. Heerd. d. Magdk. e. Häcksel. f. Maschine. g. Schrank. h. Dachfenster.

Abb. 18.

Abb. 20. Rahmen der Vertäfelung.

Abb. 17.

Abb. 23. Haus Arften. Thürecke.

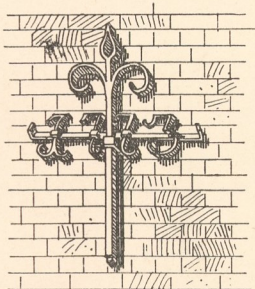


Abb. 30. Maueranker aus Boldixum.

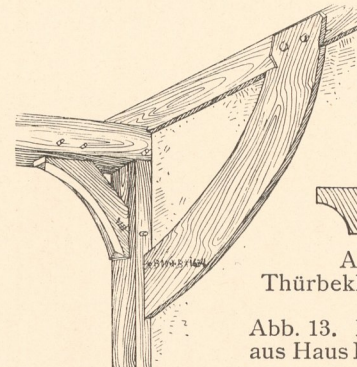


Abb. 19. Thürbekleidung.

Abb. 13. Pfosten aus Haus Hansen.

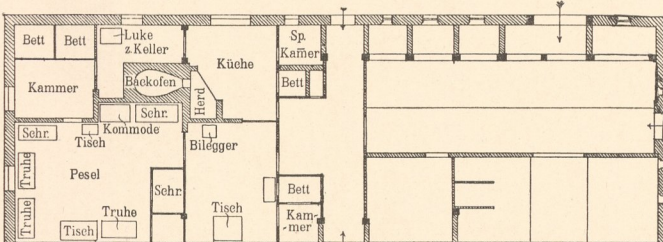


Abb. 11. Haus Hansen in Klockries, Böckingharde.

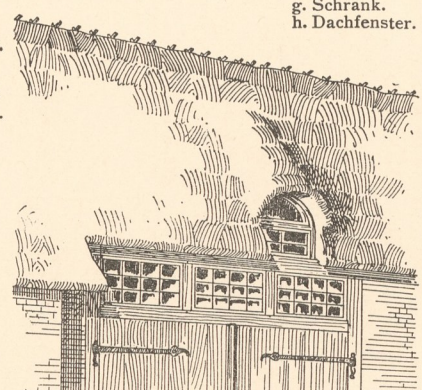


Abb. 28. Scheunenthor in Westerland.

Zinkhochätzung von Albert Frisch, Berlin W.

Inventory
Abt. E
Nr. 1204

Verlag von Gerhard Küttmann, Dresden.

