

Abb. 1. Hof-Ansicht.

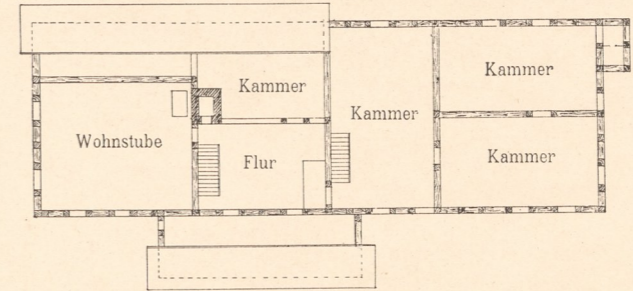


Abb. 5. Obergeschoss.

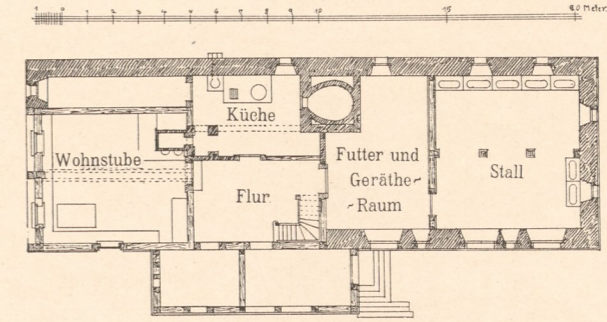


Abb. 4. Erdgeschoss.



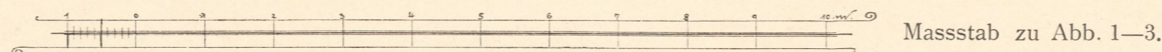
Abb. 7. Von der Flur-
thür. (Neuer Anbau.)



Abb. 8. Von der
äusseren Hofmauer.



Abb. 9. Vom Stall-
gebäude. (Aelterer Anbau.)



Massstab zu Abb. 1-3.

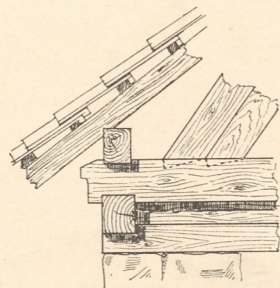


Abb. 6. Dachtraufe
und Sparrenfuss.



Abb. 2. Strassen-Ansicht.

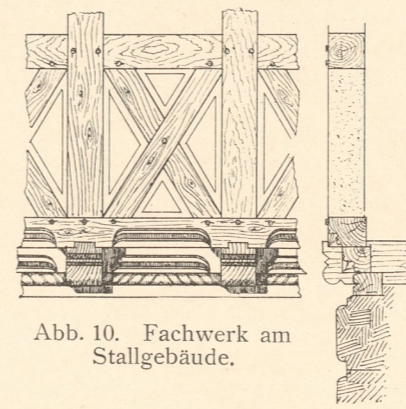


Abb. 10. Fachwerk am
Stallgebäude.

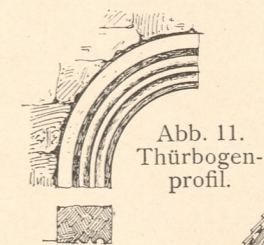


Abb. 11. Thürbogen-
profil.

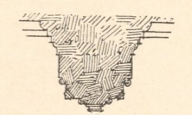


Abb. 12. Profil
des Unterzuges
i. d. Wohnstube.

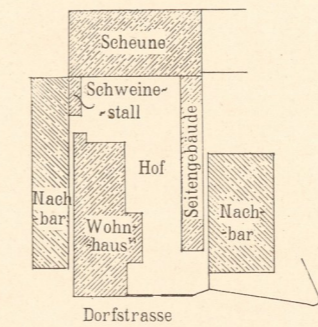
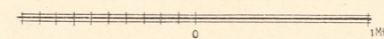


Abb. 13. Lageplan.

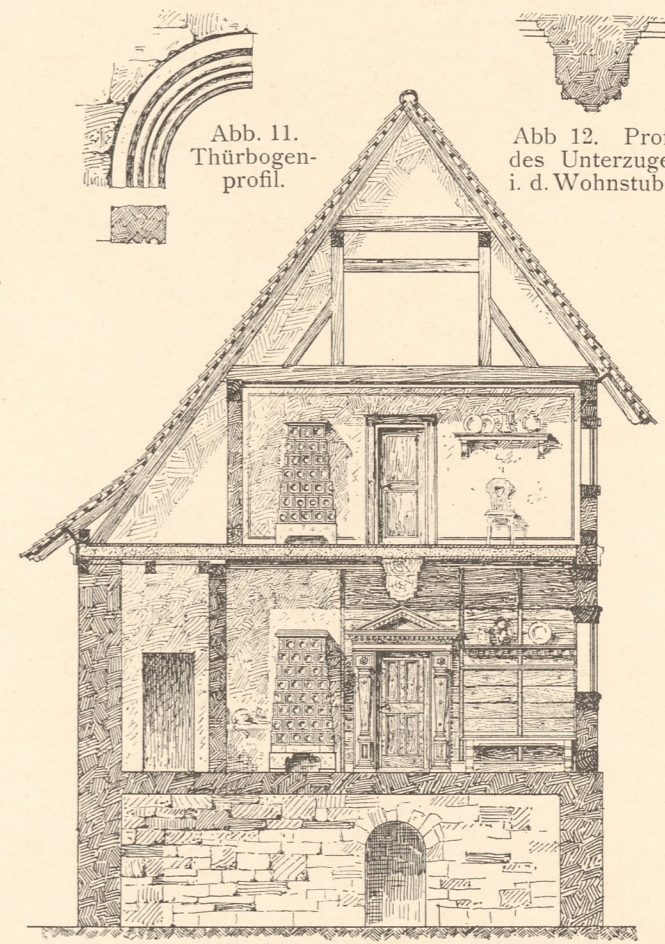


Abb. 3. Querschnitt.

Aufgen. von Architekt C. Timler, gez. von K. Schmidt.

Zinkhochätzung von Albert Frisch, Berlin W.



inventar
Abth E
Nr. 1204