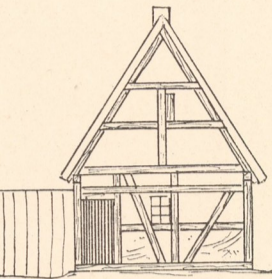


Bauernhaus. Abb. 1.



Haus für den „Spikermann“.

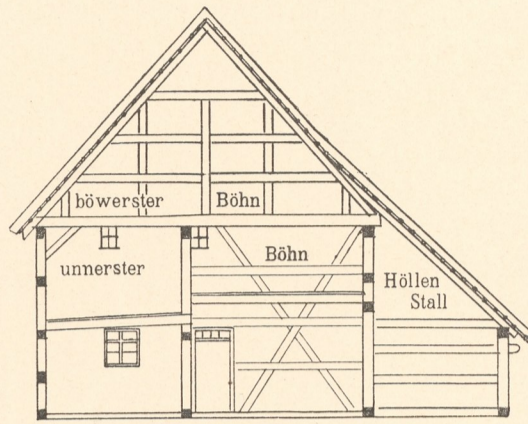


Abb. 2. Querschnitt AB (in Abb. 3).

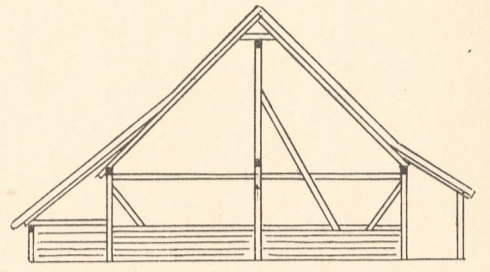


Abb. 5. Scheunen-Querschnitt.

Abb. 1—6. Bauernhof Witt in Brietzig.

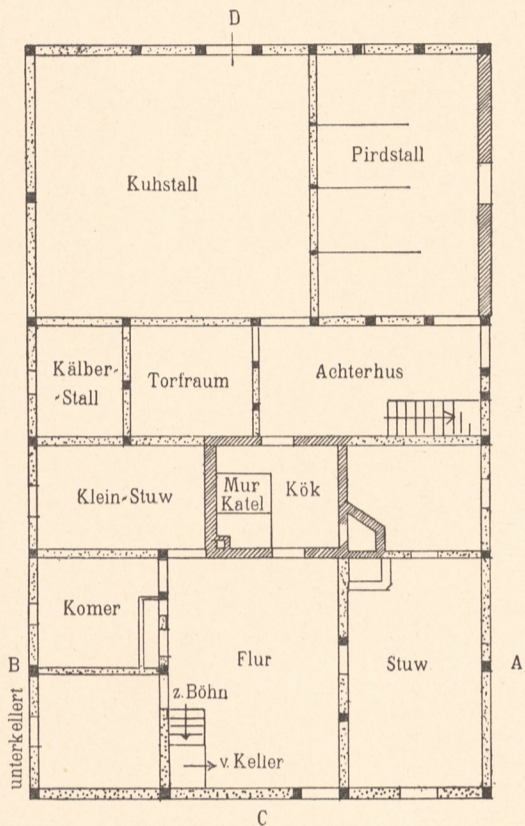


Abb. 3. Bauernhaus Witt in Brietzig.

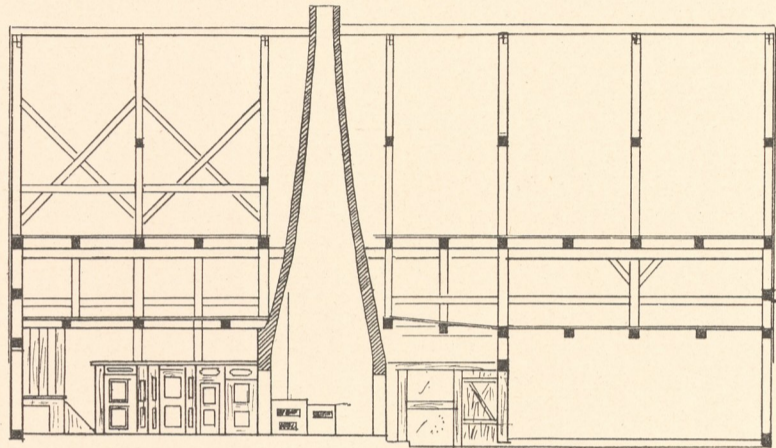


Abb. 4. Längenschnitt CD (in Abb. 3).

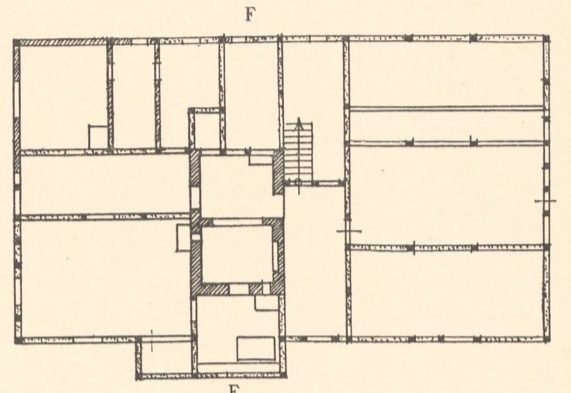


Abb. 7. Bauernhaus Stange in Brietzig.

Abb. 7—9. Bauernhaus Stange in Brietzig.

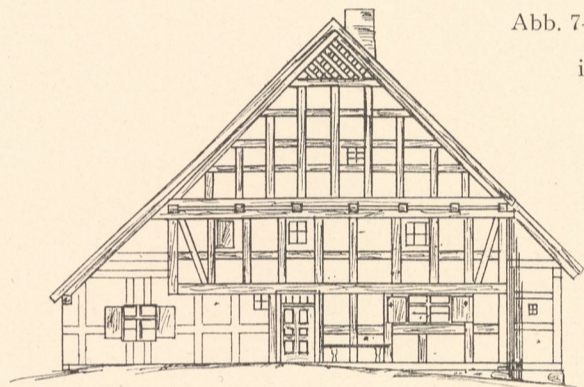


Abb. 8. Giebelansicht.

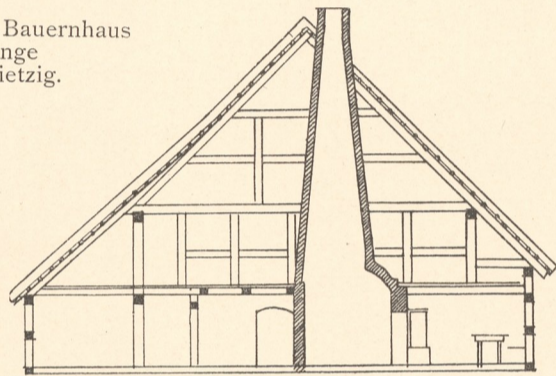


Abb. 9. Querschnitt EF (in Abb. 7).

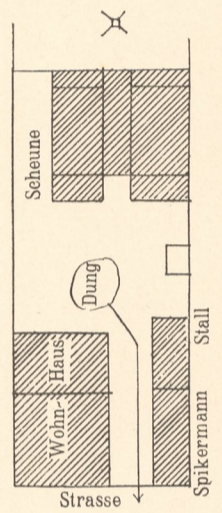


Abb. 6. Lageplan.

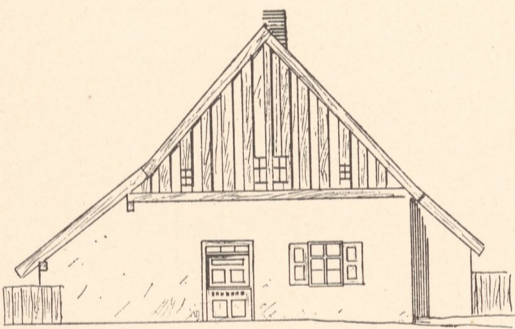


Abb. 10. Giebelansicht.

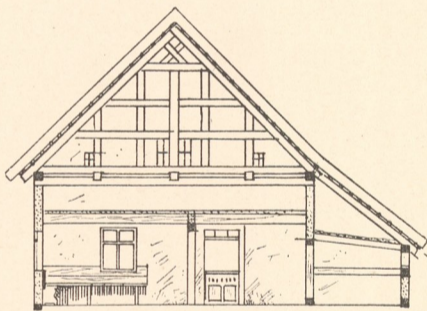


Abb. 11. Schnitt GH (in Abb. 13).

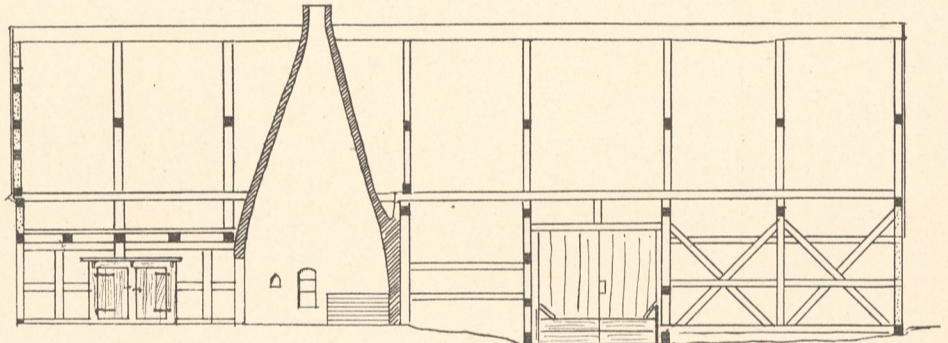
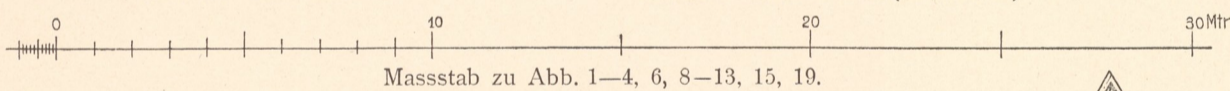


Abb. 12. Längenschnitt IK (in Abb. 13).



Masstab zu Abb. 1—4, 6, 8—13, 15, 19.

Abb. 10—13. Haus des Kossäten Propp in Lettnin.

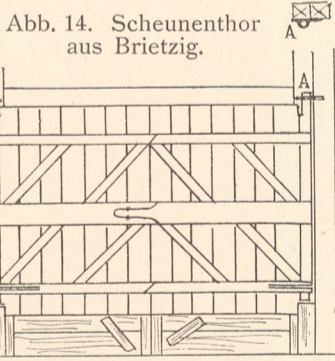


Abb. 14. Scheunenthor aus Brietzig.

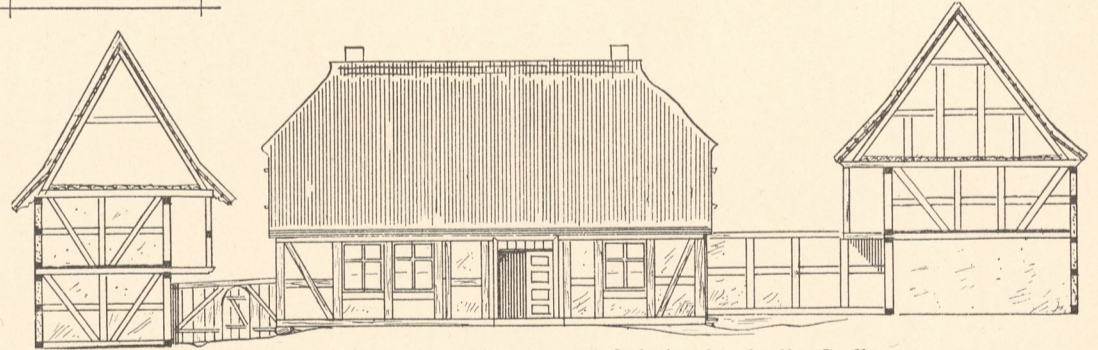


Abb. 15. Ansicht des Hauses und Schnitt durch die Ställe.

Abb. 15—17. Kossätenhof No. 18 in Rensekow (ursprünglich 30 Morgen).

Abb. 18—20. Bauernhaus No. 15 in Rensekow (ursprünglich wohl 200 Morgen).

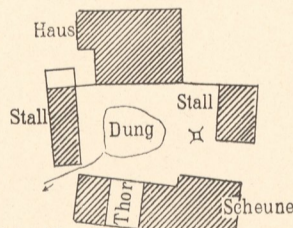


Abb. 17.

Masstab zu Abb. 6 u. 17.

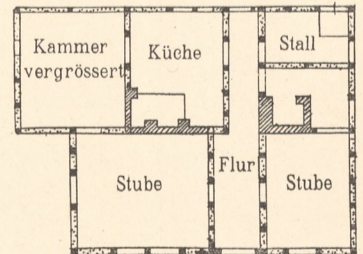


Abb. 16.

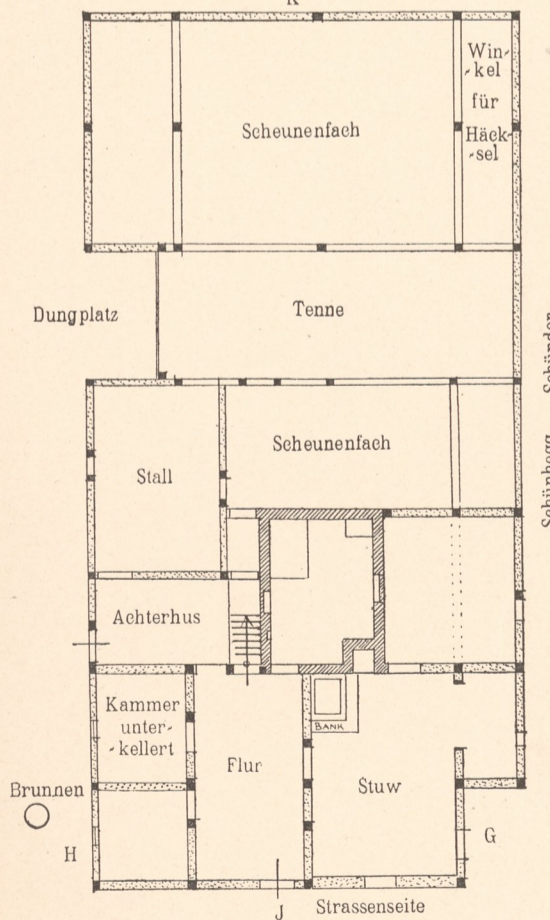


Abb. 13. Haus Propp in Lettnin.

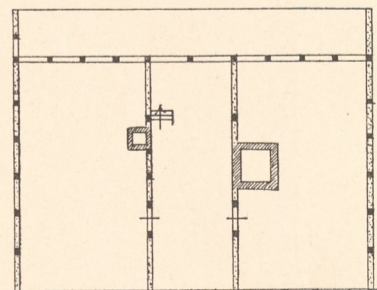


Abb. 18. Grundriss LM (in Abb. 19).

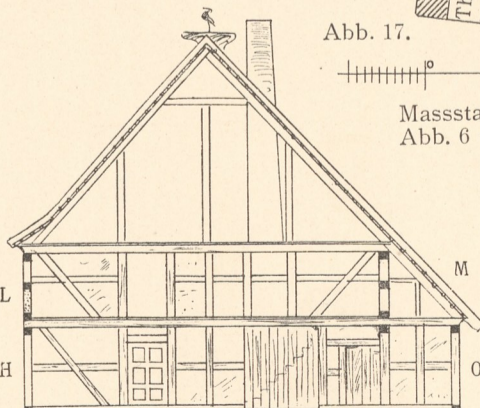


Abb. 19. Querschnitt.

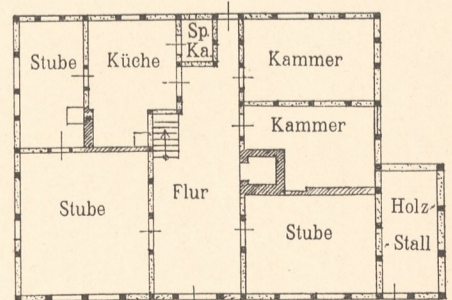
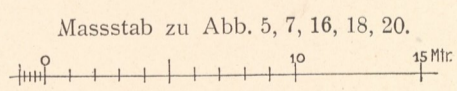


Abb. 20. Grundriss NO (in Abb. 19).



Masstab zu Abb. 5, 7, 16, 18, 20.

