

Abb. 1. Fischerhaus in Camp. (Ohne Schornstein.)

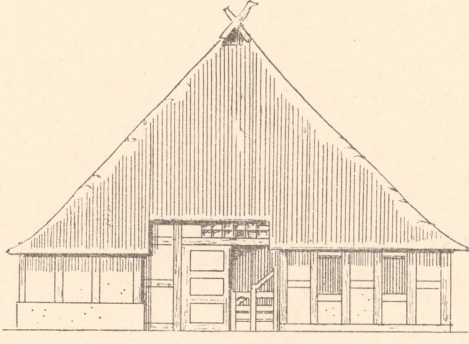


Abb. 3. Haus Treu in Camp. (Ohne Schornstein.)

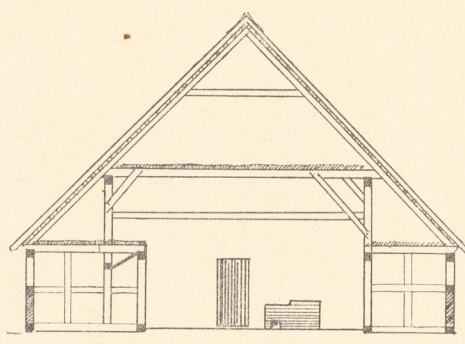


Abb. 5. Haus Treu in Camp. Querschnitt A B.

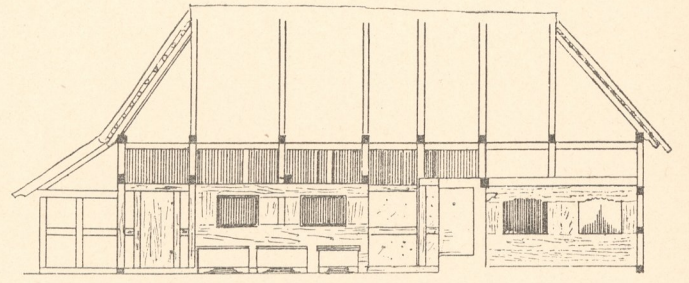


Abb. 6. Haus Nimz in Jamund. Längenschnitt.

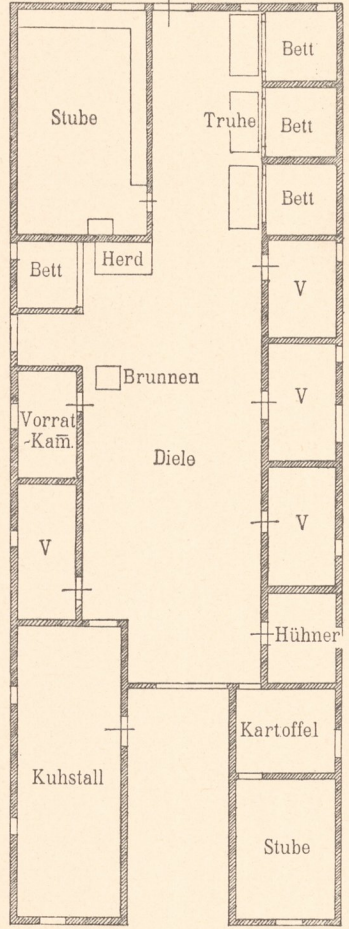


Abb. 2. Fischerhaus in Camp.

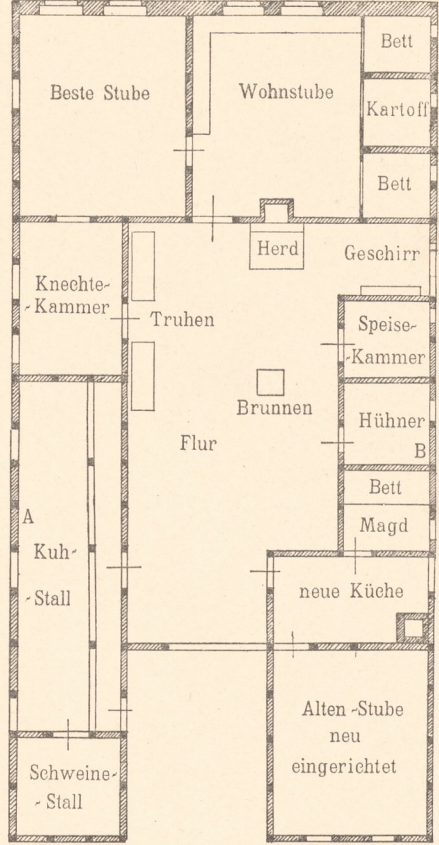
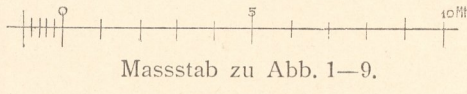


Abb. 4. Haus Treu. (Fischer und Bauer.)



Massstab zu Abb. 1-9.

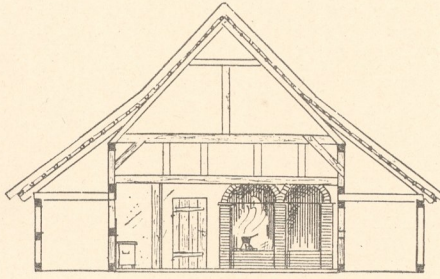


Abb. 8. Haus Nimz in Jamund. Querschnitt.

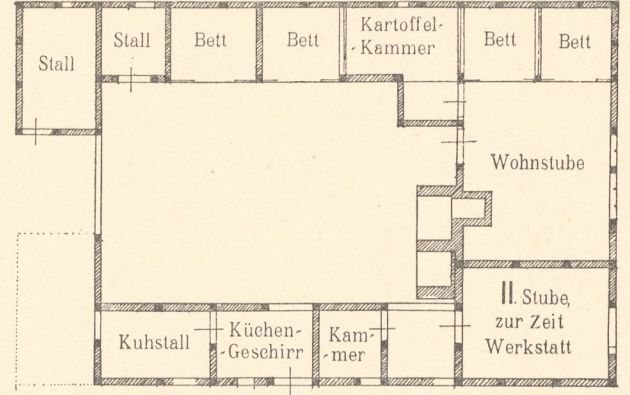


Abb. 7. Haus Nimz in Jamund.

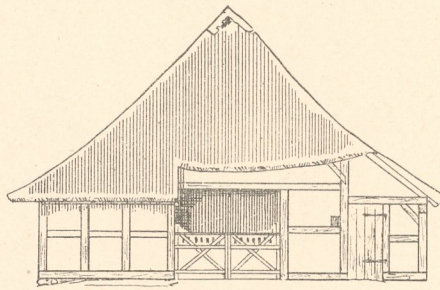


Abb. 9. Haus Nimz in Jamund. (Ohne Schornstein.) 1706 erbaut.

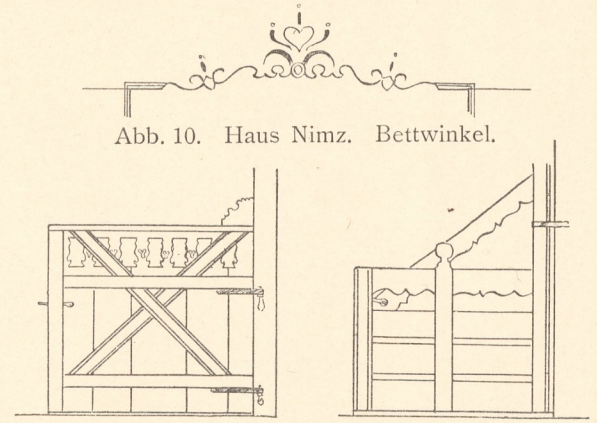


Abb. 10. Haus Nimz. Bettwinkel.

Abb. 11. Jamund. Heckenthür. Abb. 12. Camp. Hecke.

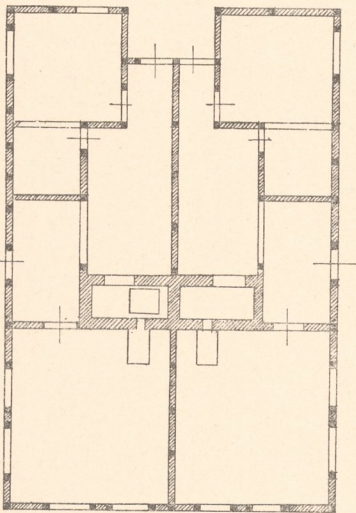


Abb. 13. Henkenhagen. „Tweipott“ Holz-Martens.

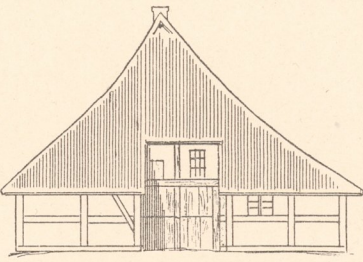


Abb. 14. Henkenhagen. „Tweipott“ Holz-Martens.

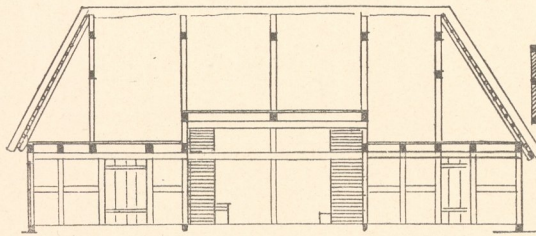


Abb. 16. Henkenhagen. „Tweipott“ Warnke-Maass.

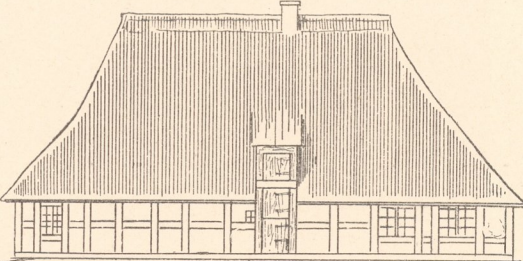


Abb. 15. Henkenhagen. „Tweipott“ Holz-Martens.

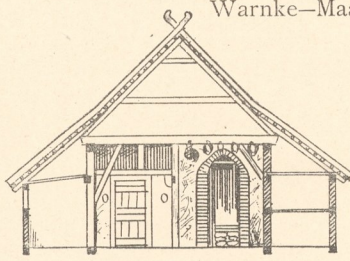


Abb. 17. Henkenhagen. „Tweipott“ Warnke-Maass.

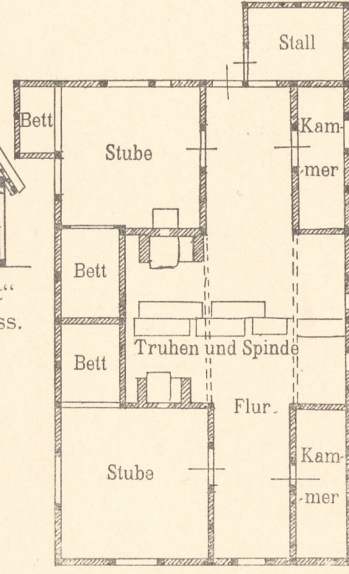


Abb. 18. Henkenhagen. „Tweipott“ Warnke-Maass.

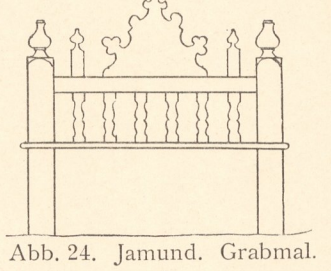


Abb. 24. Jamund. Grabmal.

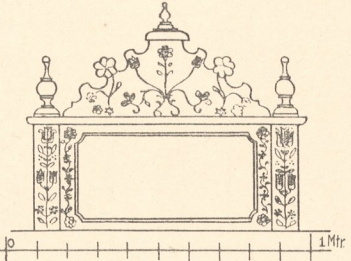


Abb. 25. Jamund. Grabmal.

Maassstab zu Abb. 10, 24 und 25.

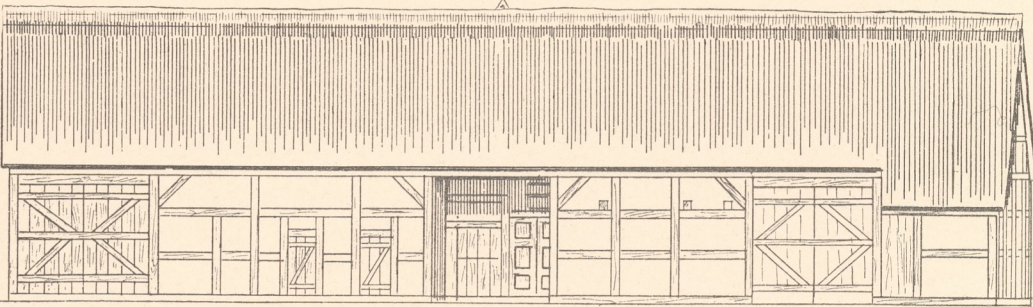


Abb. 19. Jamund. Doppelhaus No. 66 und 67.

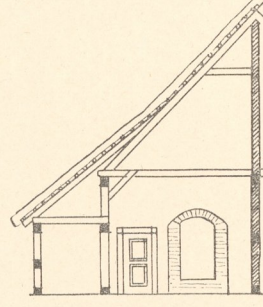


Abb. 21. Jamund. Doppelhaus No. 66. Querschnitt CD.

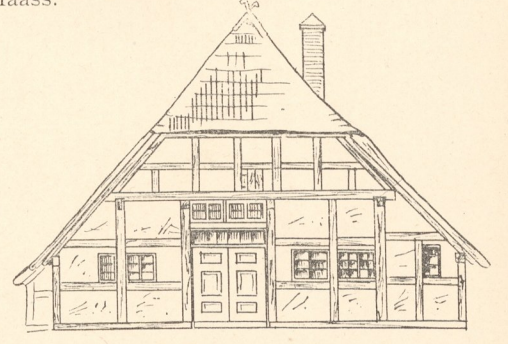


Abb. 22. Jamund. Haus Mauke.

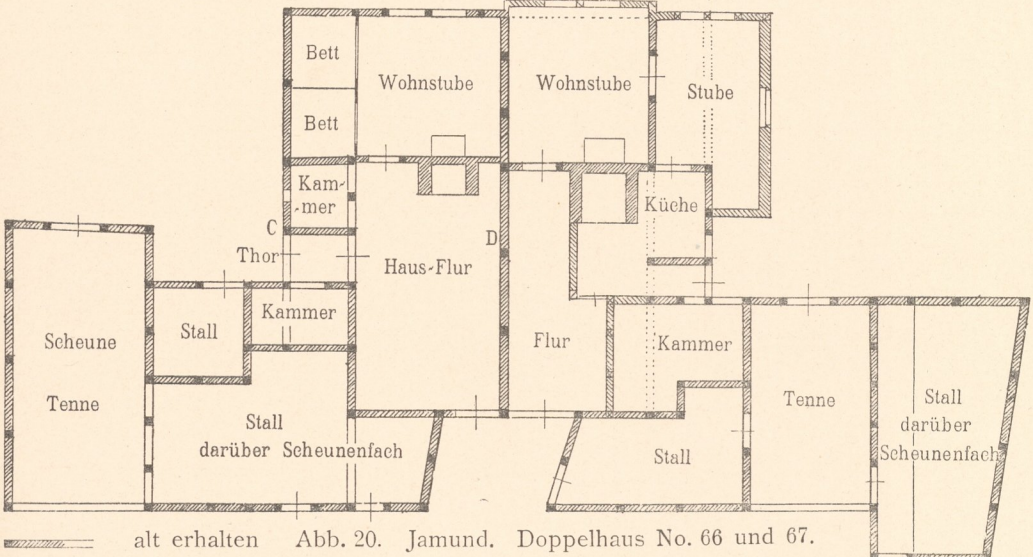


Abb. 20. Jamund. Doppelhaus No. 66 und 67.

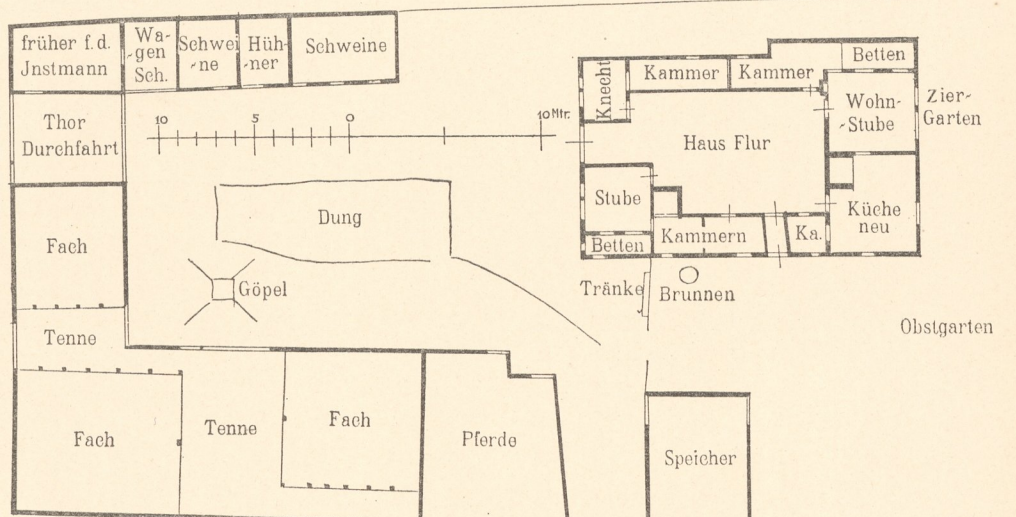


Abb. 23. Vollbauernhof Mauke in Jamund.

Massstab zu Abb. 13-22.

