

Abb. 1. Nr. 218. Schnitt A B.

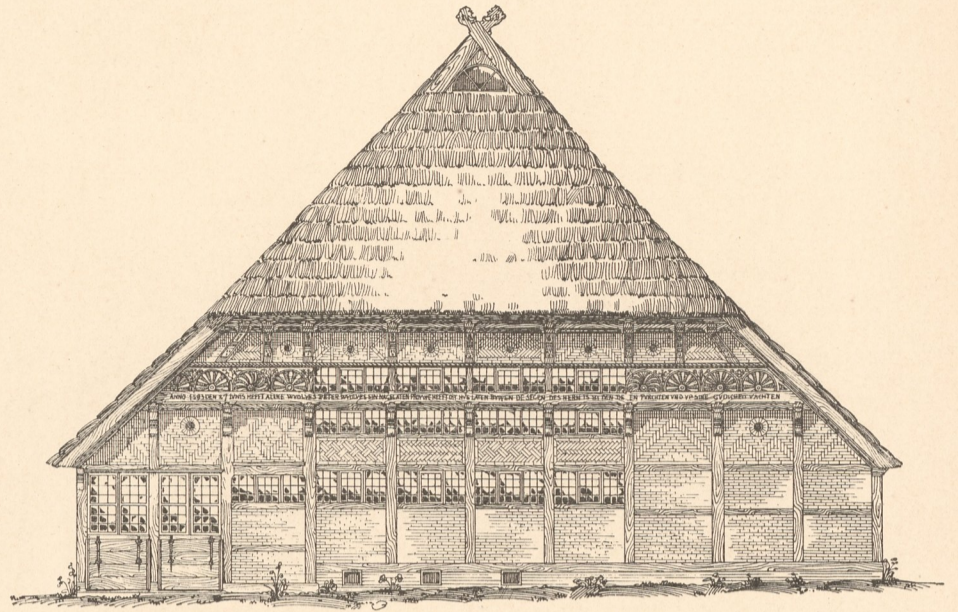


Abb. 2. Nr. 218. Vordere Giebelansicht.

Masstab zu Abb. 1 und 2.

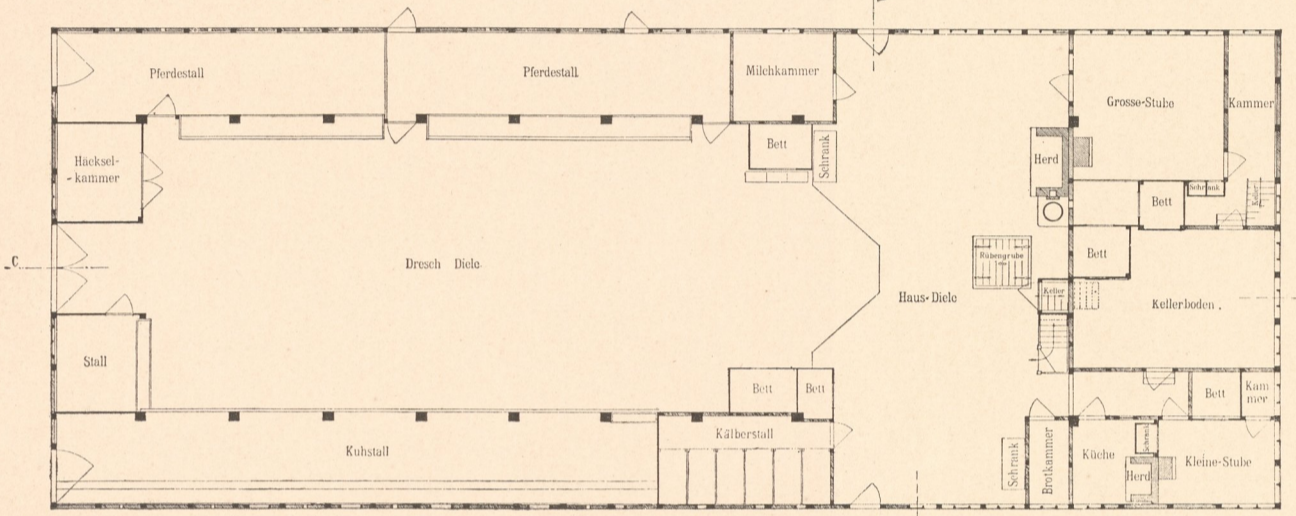


Abb. 3. Nr. 218. Grundriss.

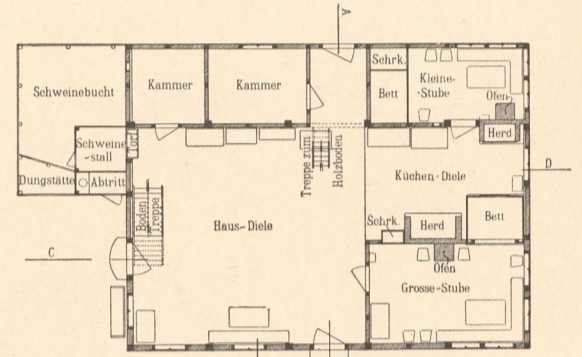


Abb. 5. Nr. 120. Grundriss.

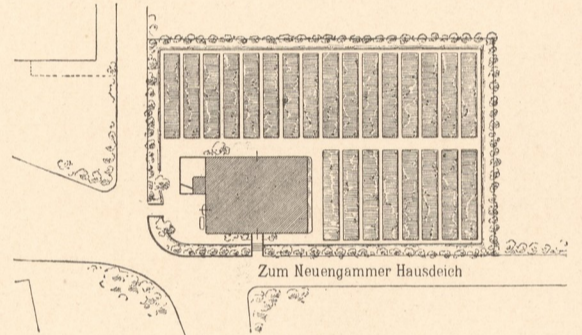


Abb. 6. Nr. 120. Lageplan.

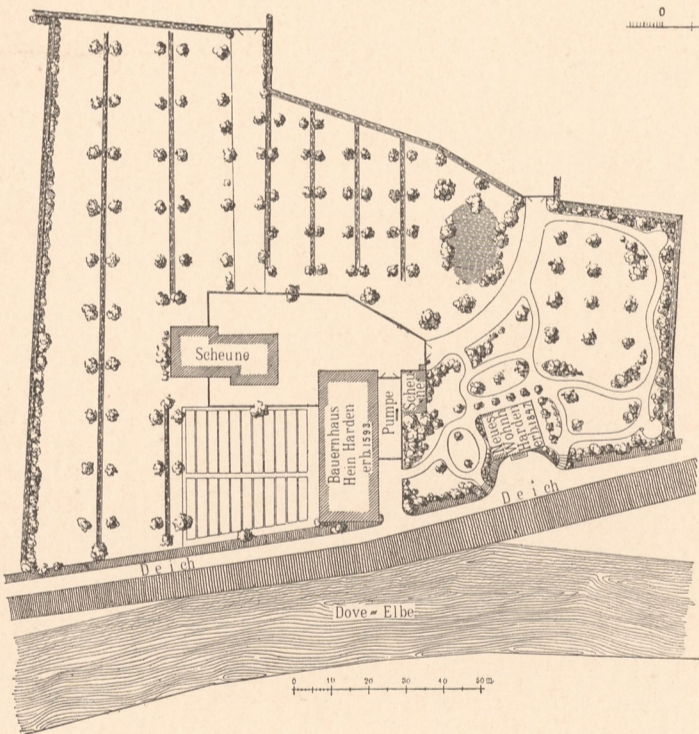


Abb. 4. Nr. 218. Lageplan.

Masstab zu Abb. 3 und 5.

Masstab zu Abb. 6.

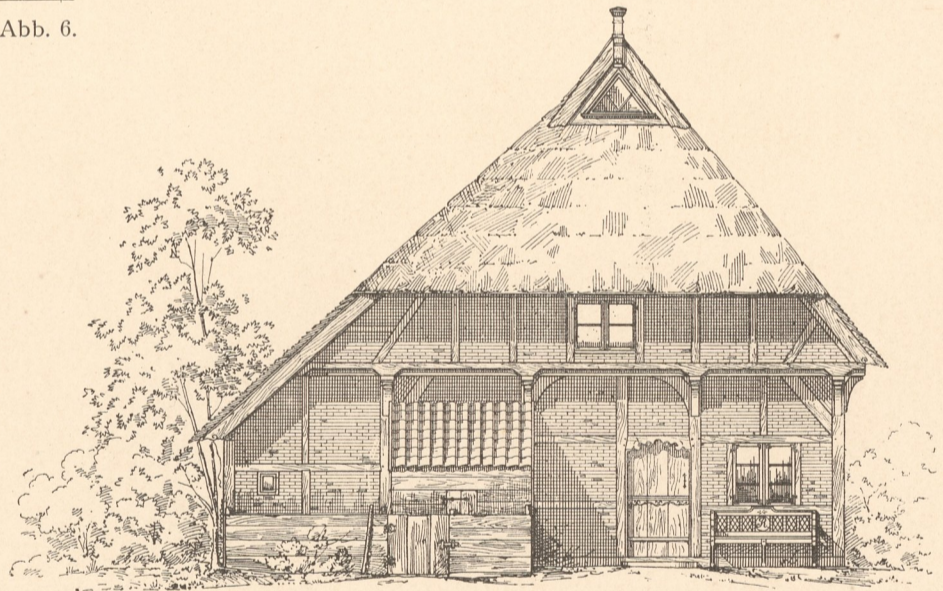


Abb. 7. Nr. 120. Vorderansicht.

Masstab zu Abb. 7-9.

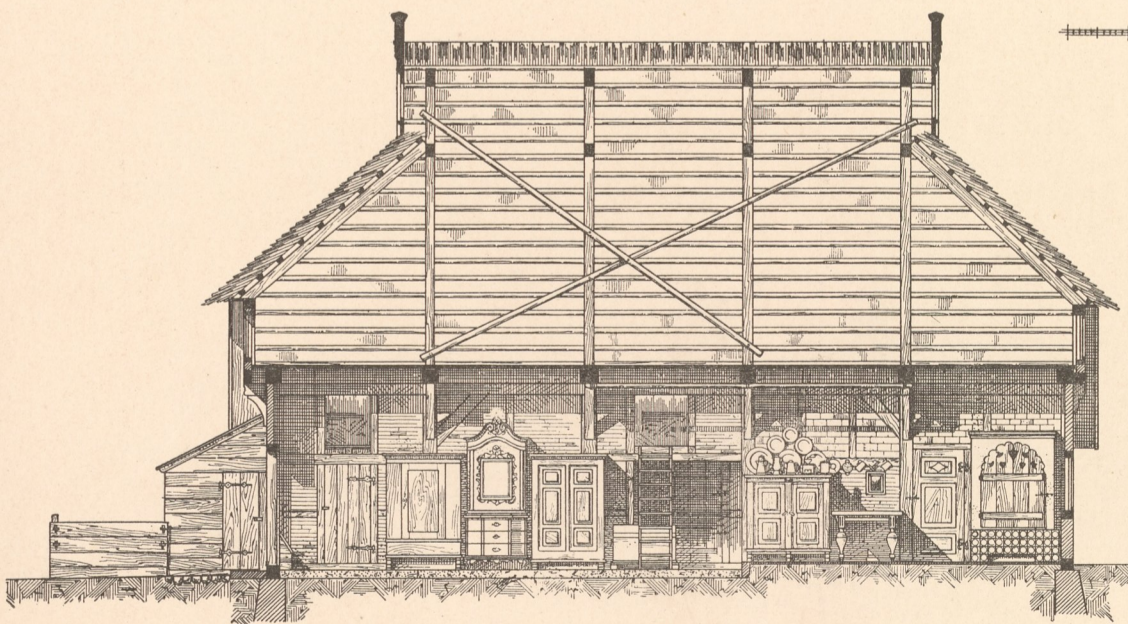


Abb. 8. Nr. 120. Schnitt C D.

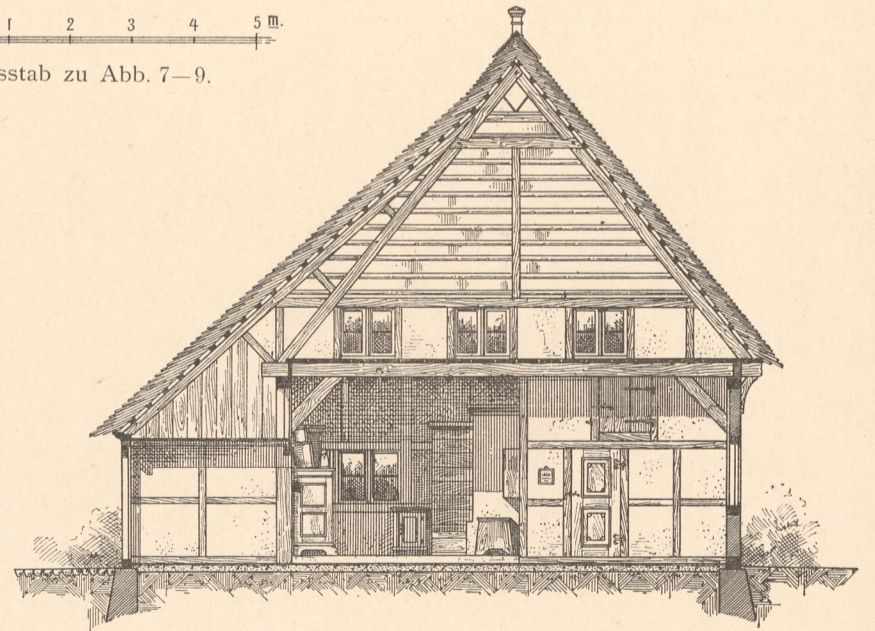


Abb. 9. Nr. 120. Schnitt A B.

Aufgen. von P. Hübner und W. Cohn.

Zinkhochätzung von Albert Frisch, Berlin W.

Verlag von Gerhard Küttmann, Dresden.

Inventar  
Abth E  
Nr. 1204



UB  
TUG