

Abb. 1. Ansicht vom Hofe aus.

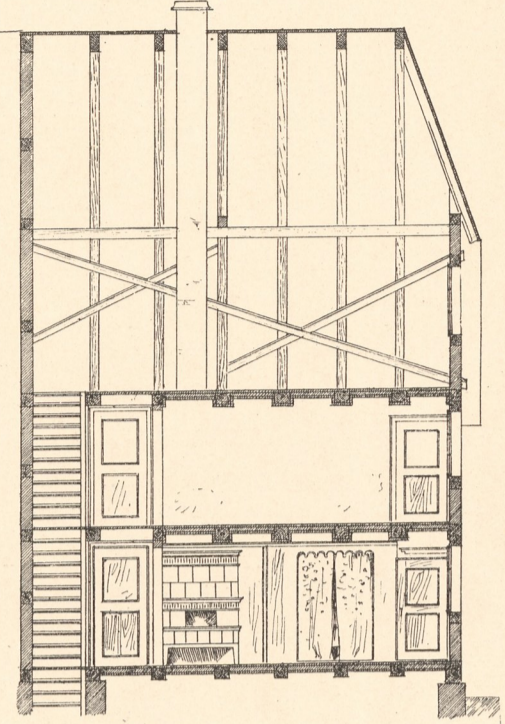
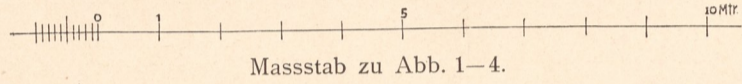


Abb. 2. Längenschnitt durch das Wohnhaus.



Masstab zu Abb. 1-4.

Abb. 1-10.
Haus Ruetsch
in Buchsweiler
bei Pfirt O.-E.

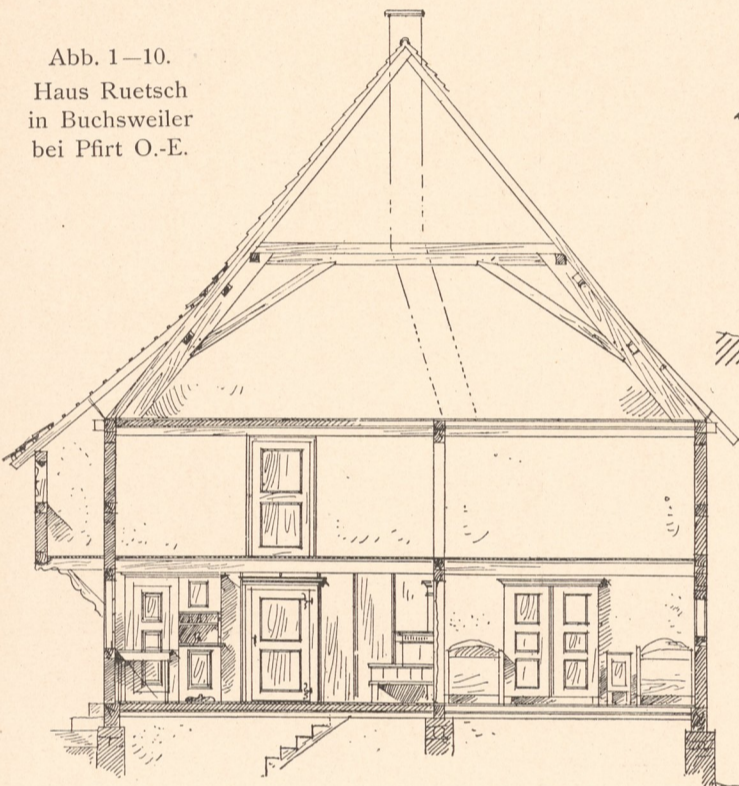


Abb. 3. Querschnitt durch die Wohnung.

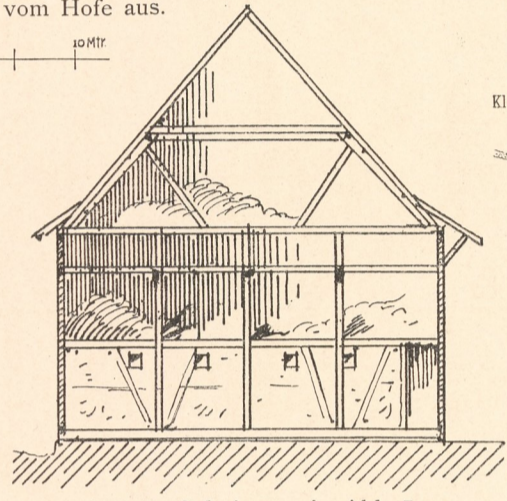


Abb. 5. Schnitt x y in Abb. 7.

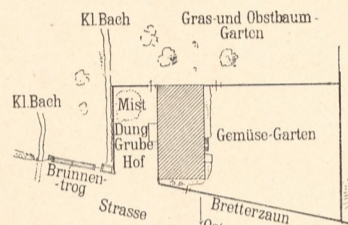
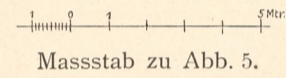


Abb. 6. Lageplan.



Masstab zu Abb. 5.

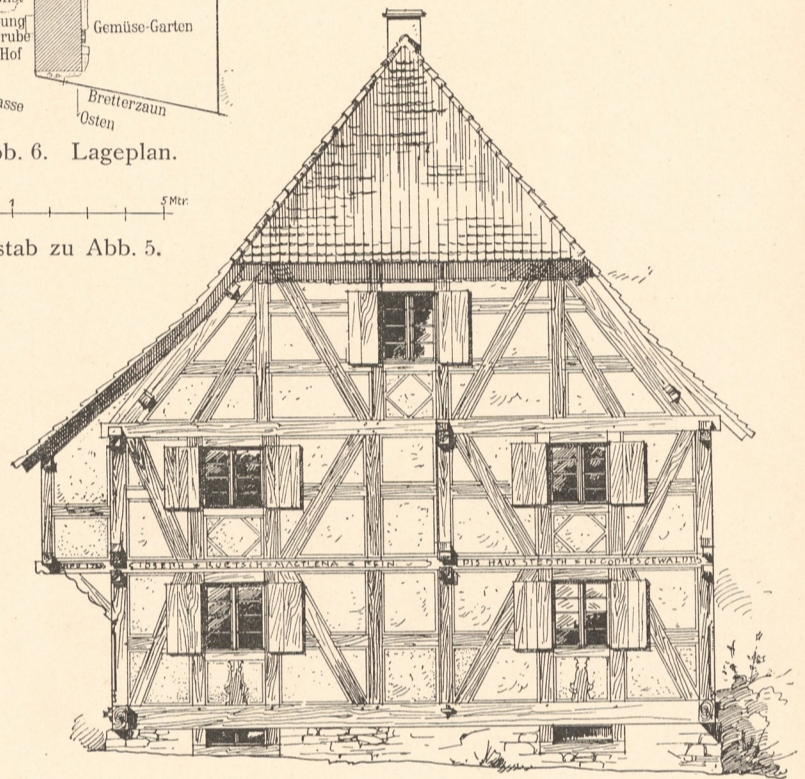


Abb. 4. Strassengebelansicht

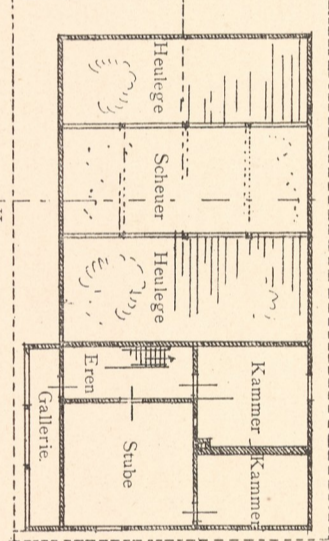
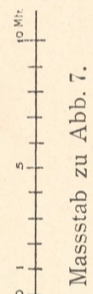


Abb. 7. Obergeschoss.



Masstab zu Abb. 7.

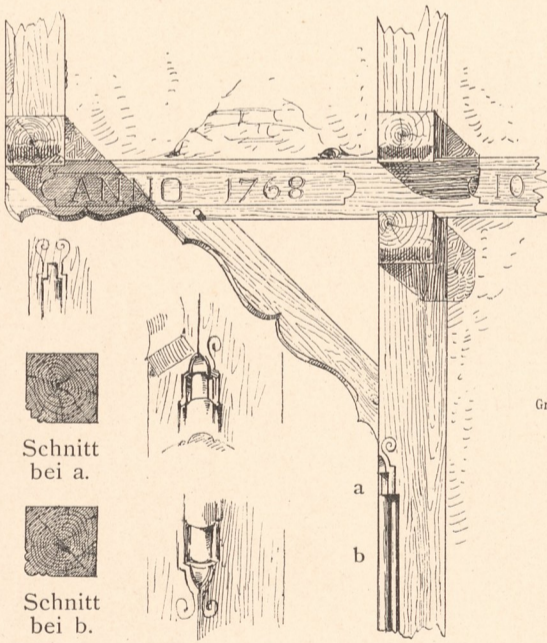


Abb. 8. Einzelheiten.

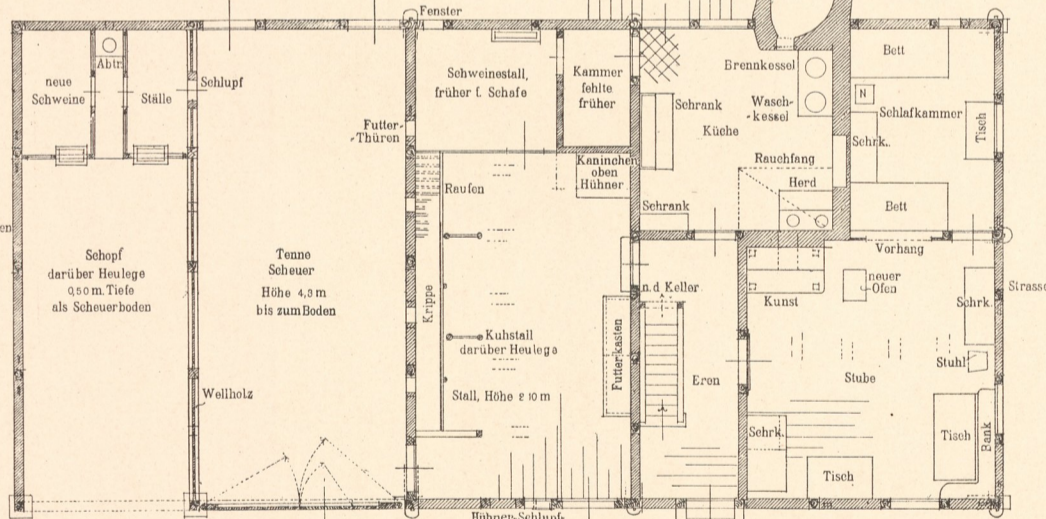


Abb. 9. Grundriss des Erdgeschosses.

NB. Eren, Stube
und Kammer sind
unterkellert.

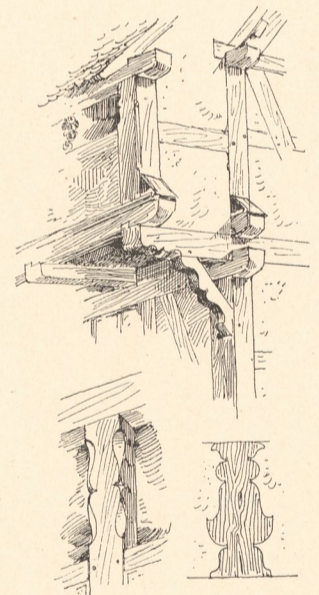


Abb. 10. Einzelheiten.

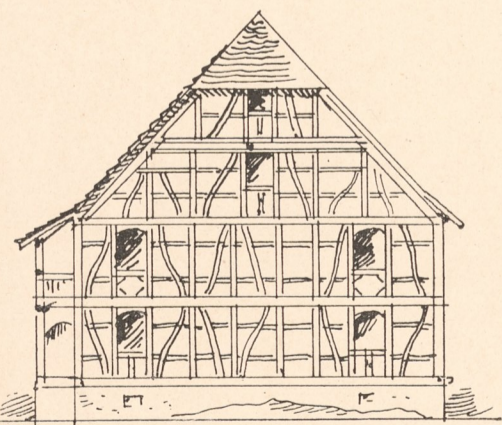


Abb. 11. Moernach. ca. 1730.

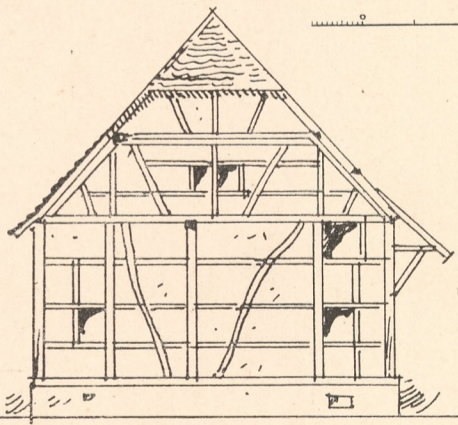


Abb. 12. Obersept. 1696.

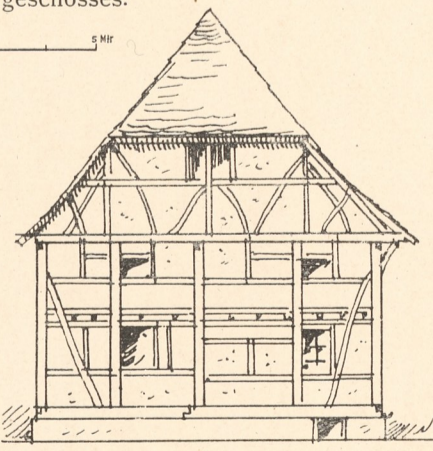


Abb. 13. Wolfersdorf. 1551.

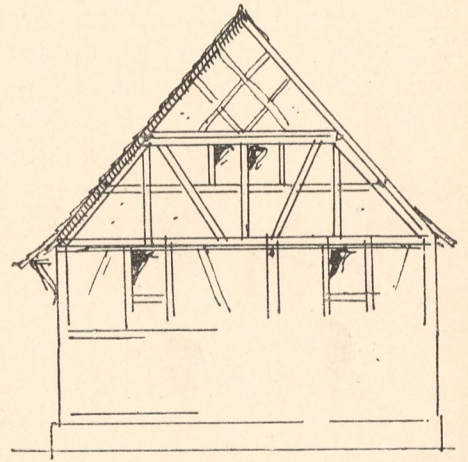
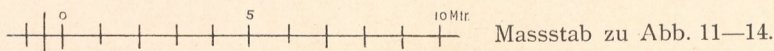


Abb. 14. Ueberstrass. 1748.



Masstab zu Abb. 11-14.

Aufgen. von Statsmann.

Zinkhochätzung von Albert Frisch, Berlin W.

Verlag von Gerhard Kühtmann, Dresden.

Inventar
Abth E
Nr. 1204

