

Abb. 12.

Abb. 1. Vorderansicht (Südostseite).

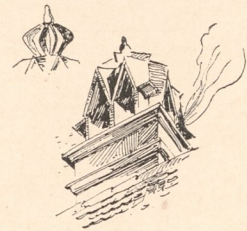


Abb. 13.

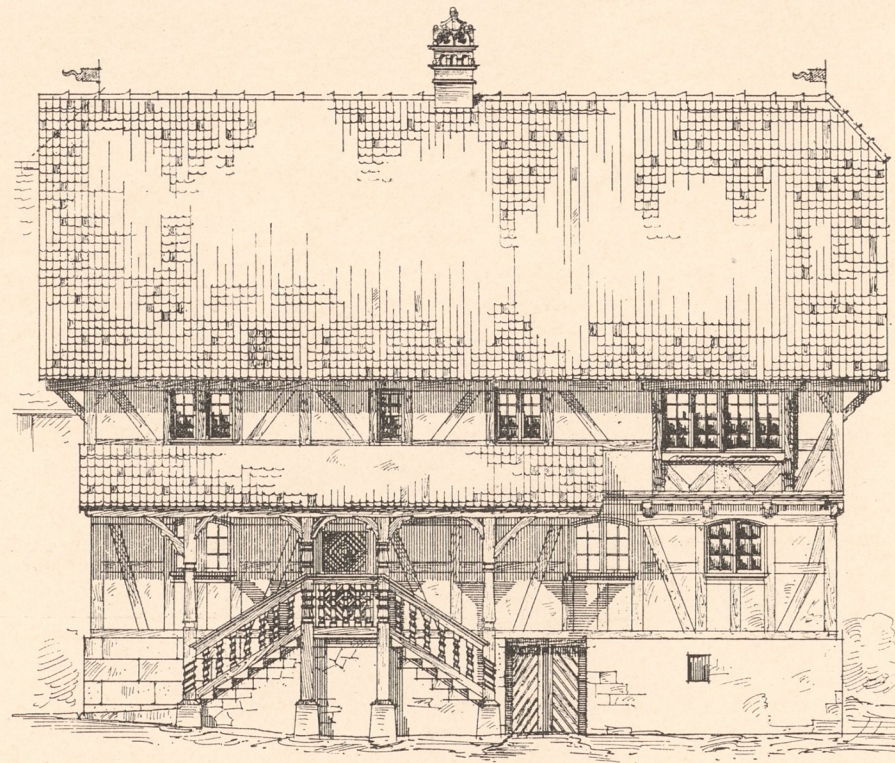


Abb. 2. Hofansicht.

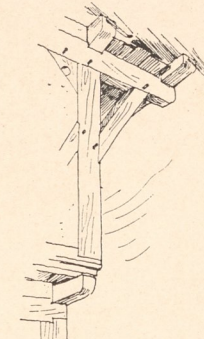


Abb. 14.

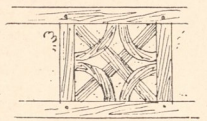


Abb. 15.

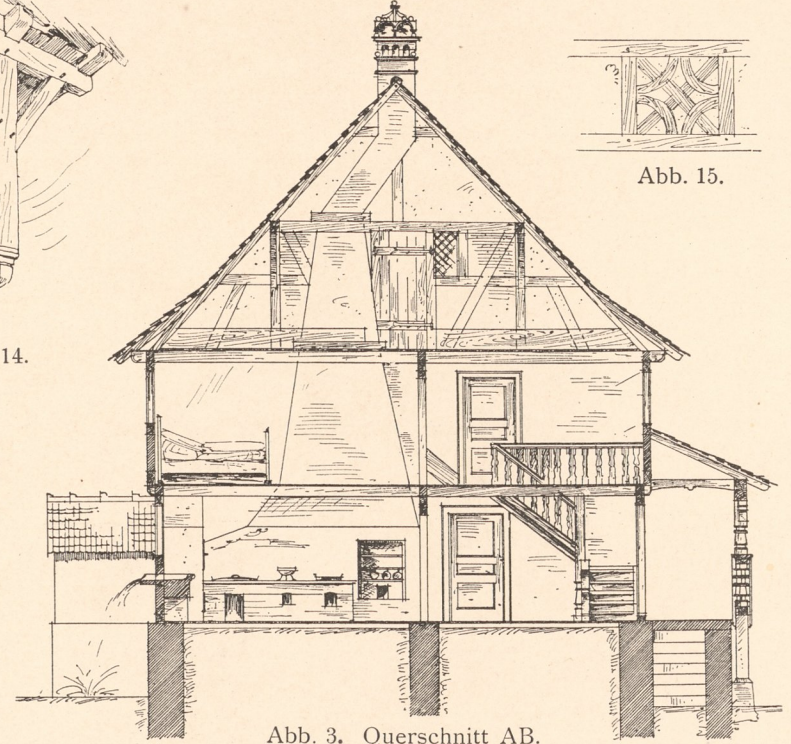
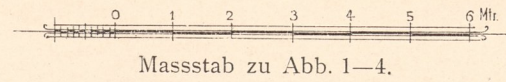


Abb. 3. Querschnitt AB.



Massstab zu Abb. 1-4.

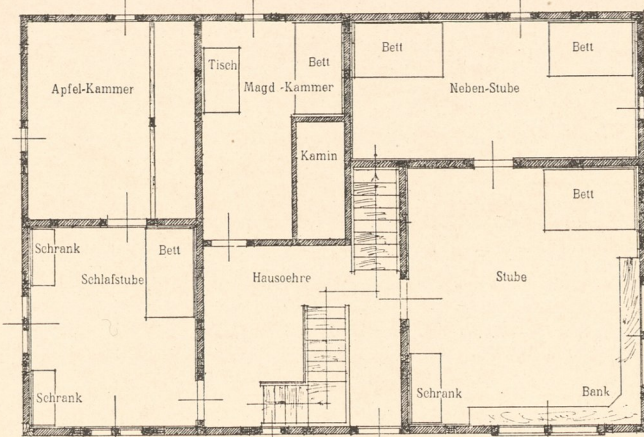


Abb. 5. Obergeschoss.

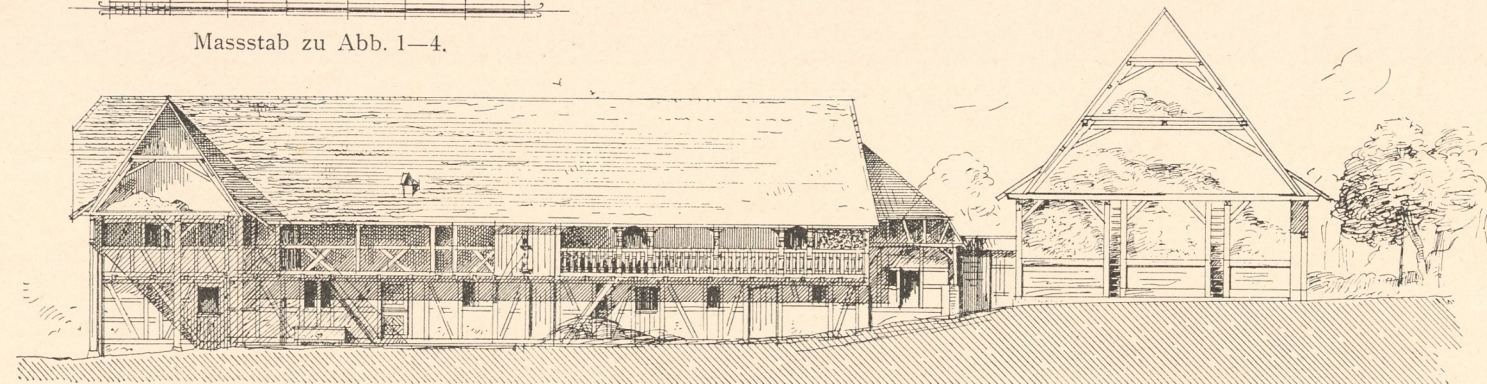


Abb. 16.

Schnitt AB im Lageplane (Text).  
Ansicht der Stallungen.

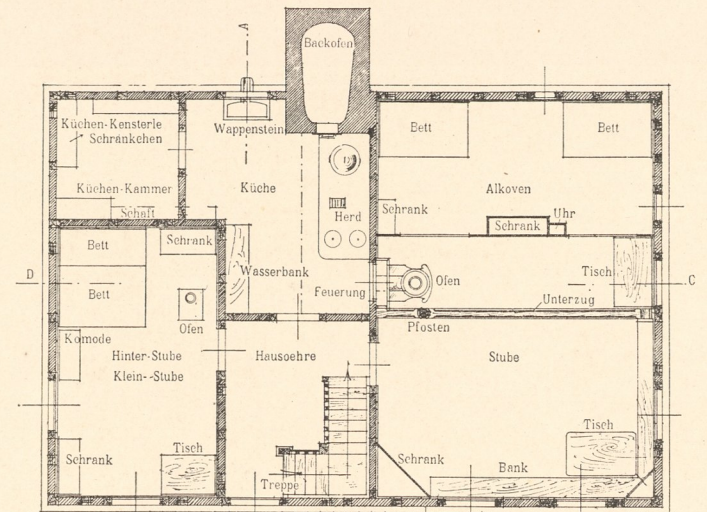


Abb. 6. Erdgeschoss.

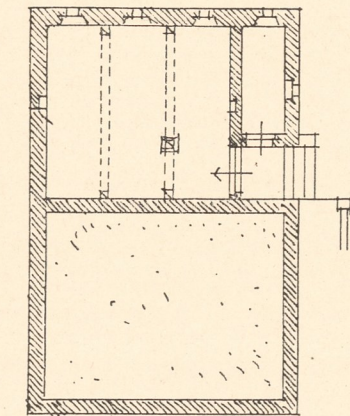
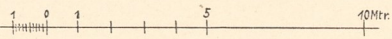
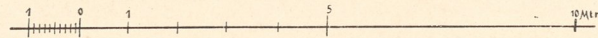


Abb. 7. Keller.

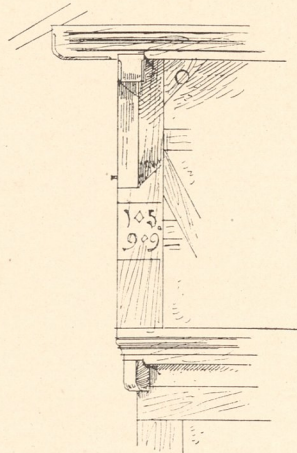
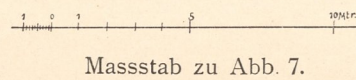


Abb. 11.



Massstab zu Abb. 7.

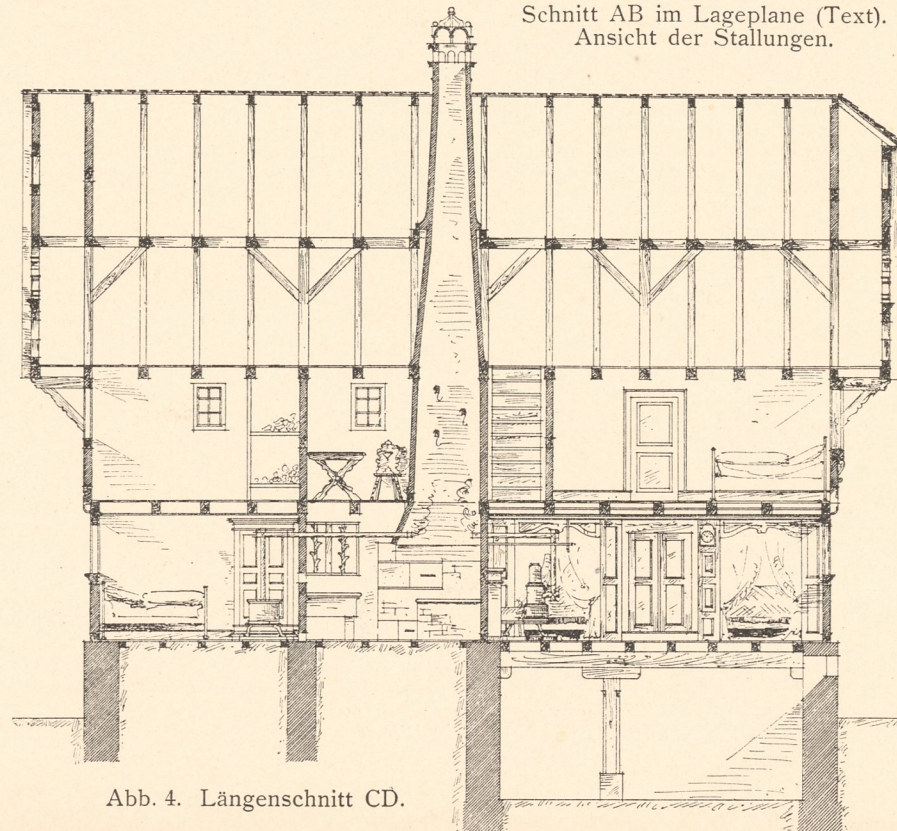


Abb. 4. Längenschnitt CD.

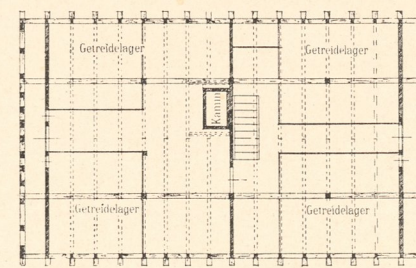


Abb. 8. Dachgeschoss.

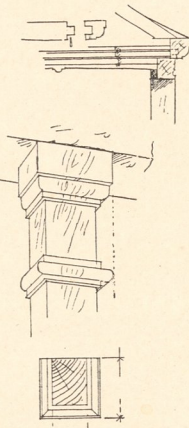


Abb. 9.  
Detail zu Abb. 10.

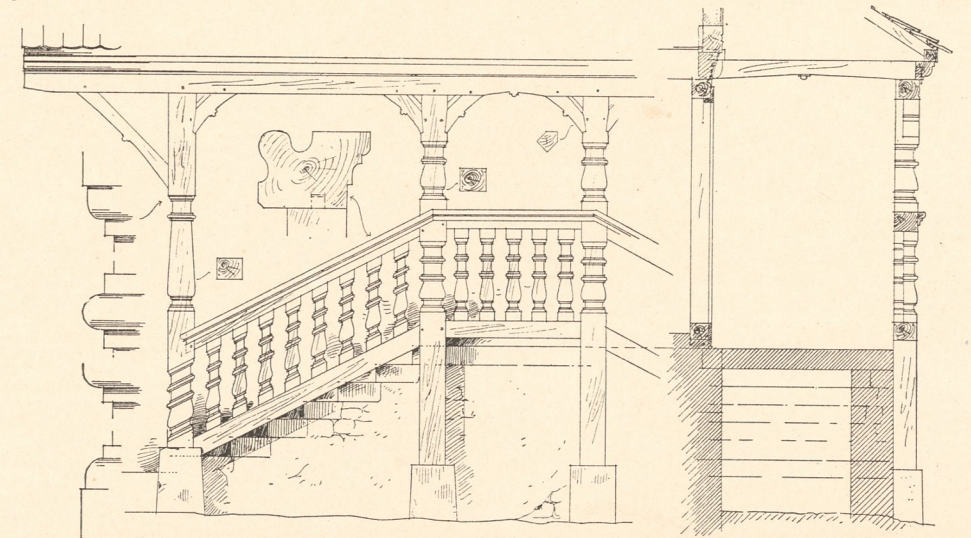


Abb. 10. Freitreppe des Wohnhauses.

inventar  
Adler E  
Nr. 1204



UB  
TUG



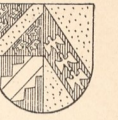


Abb. 1. Weintrotte v. J. 1595.

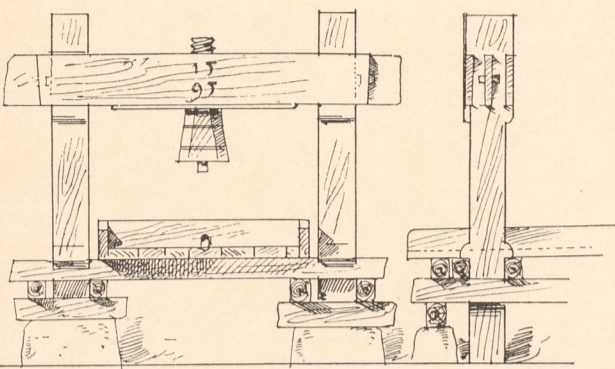


Abb. 2. Oestlicher Wohnhausgiebel v. J. 1599.

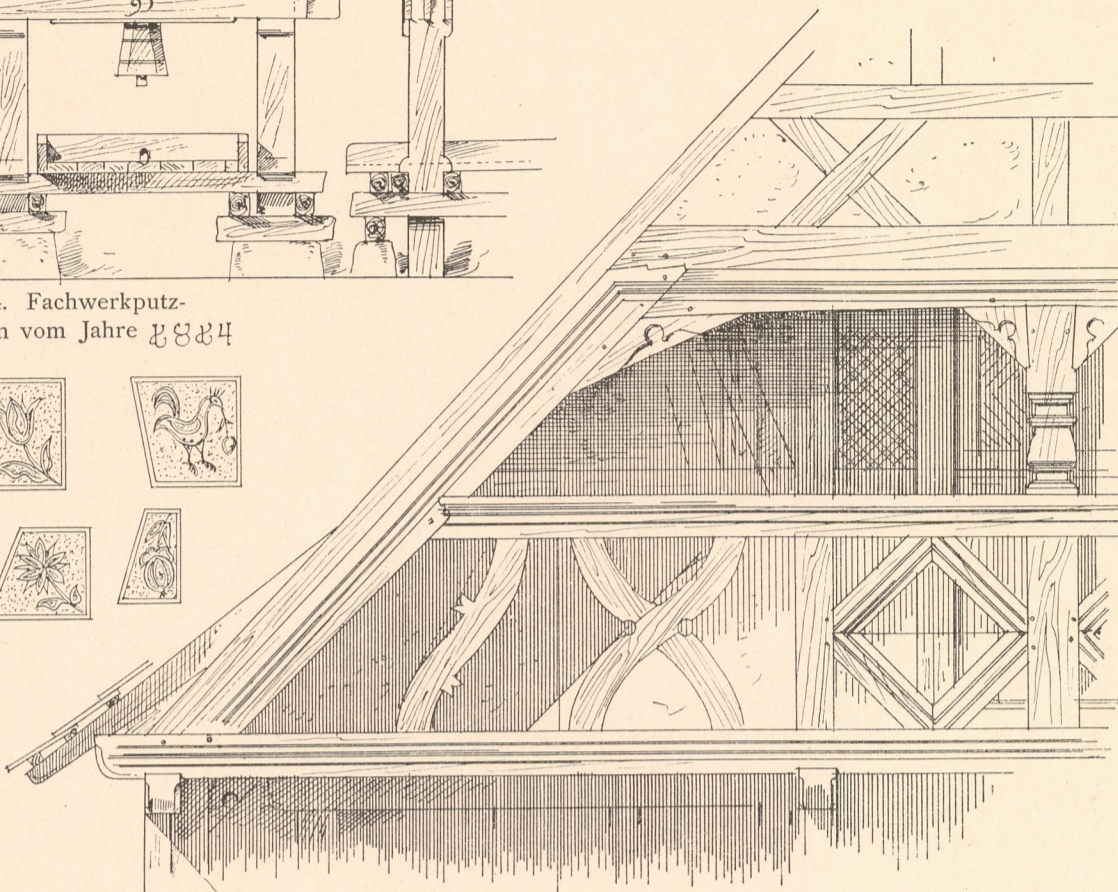


Abb. 3. Wohnhausfenster v. 1599.

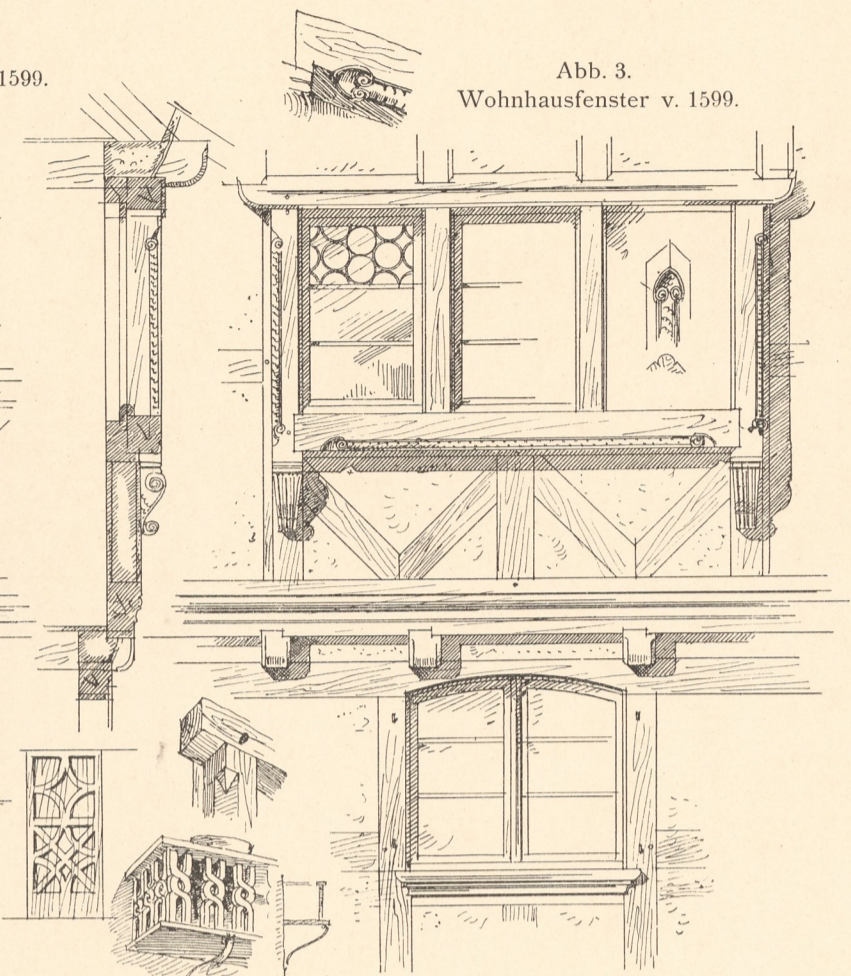


Abb. 4. Fachwerkputzfiguren vom Jahre 1584

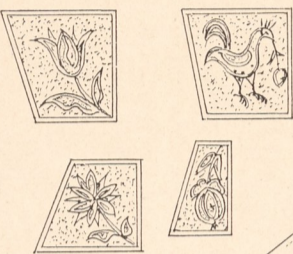


Abb. 5. Blumenbrett.

Abb. 6 u. 7. Lehmputzfiguren im Rossstall (Decke).

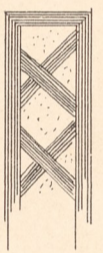


Abb. 6.

Abb. 7.

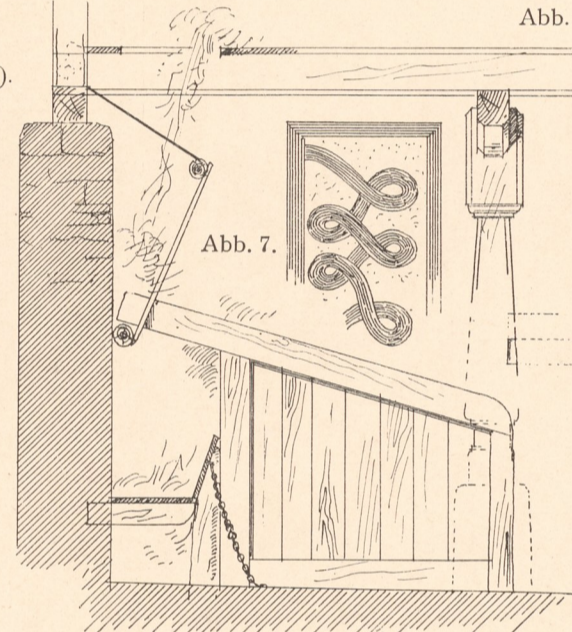


Abb. 8. Schnitt durch den Rossstall.

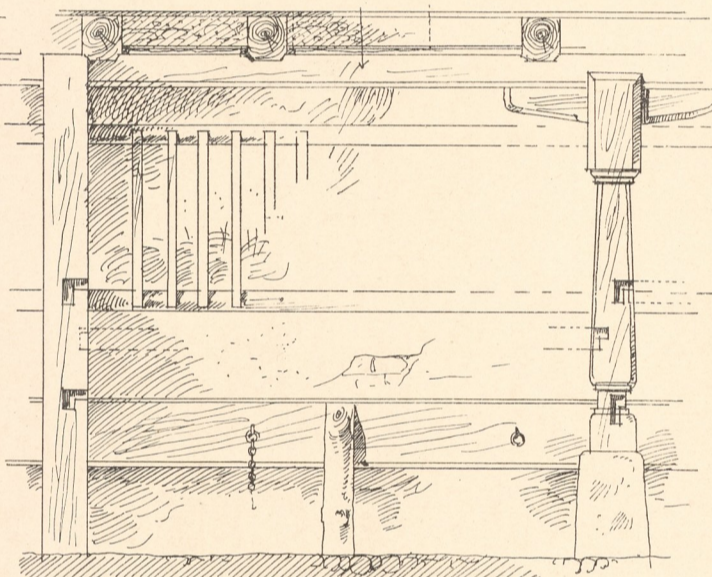


Abb. 9. Stallthüre.

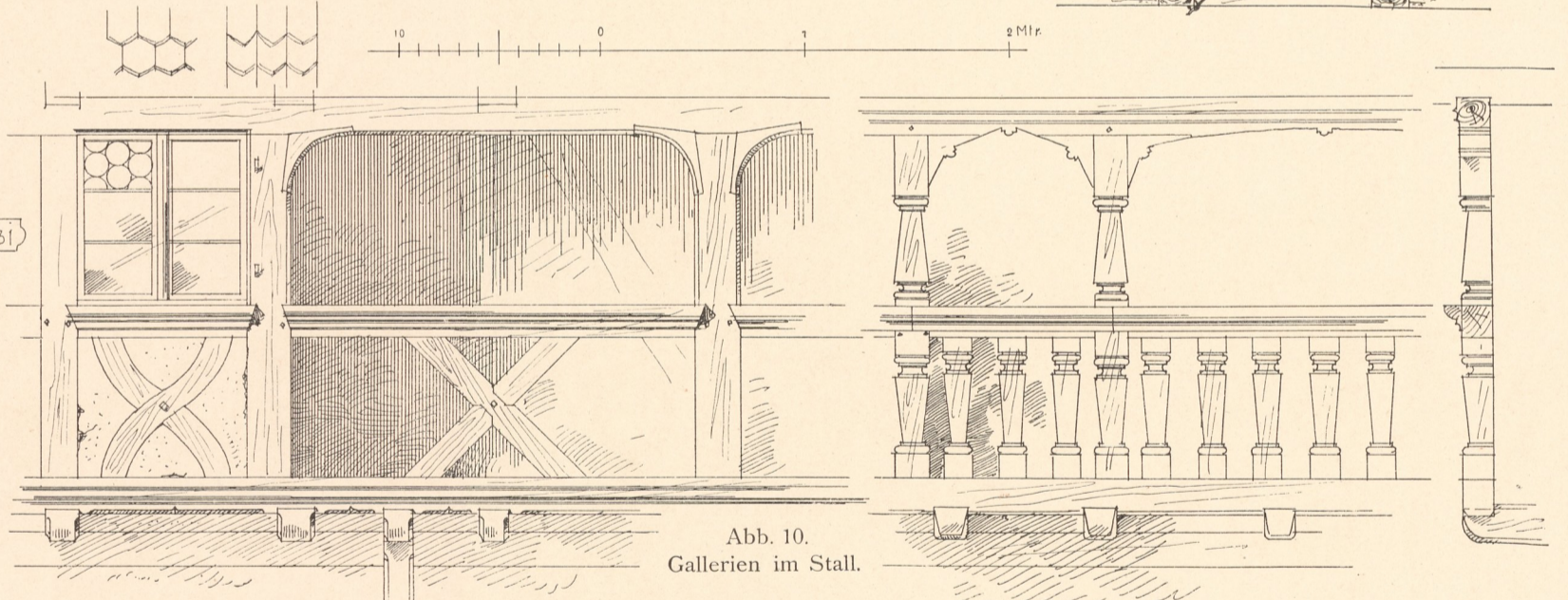
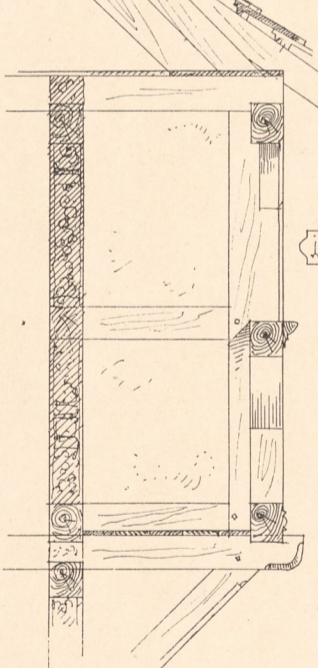
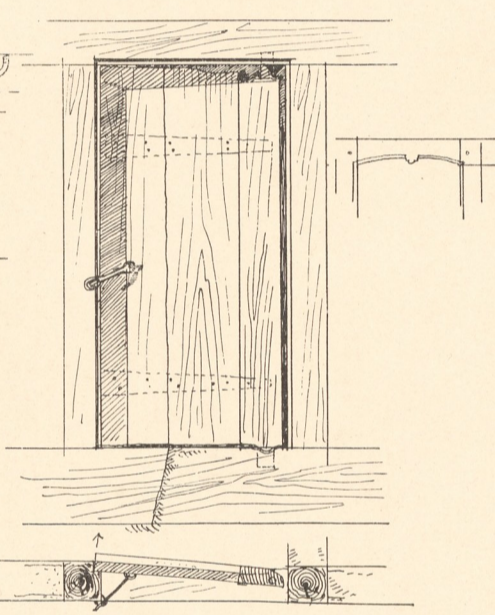


Abb. 10. Gallerien im Stall.

Abb. 13. Oberlicht über d. Thüre b. d. Einfahrt.

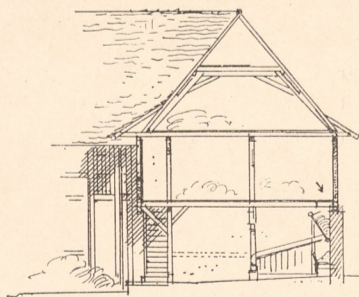


Abb. 11. Schnitt C-D durch d. Stallgebäude (s. Bl. Elsass Nr. 3 Abb. 6).

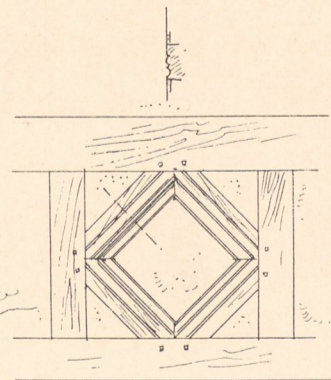
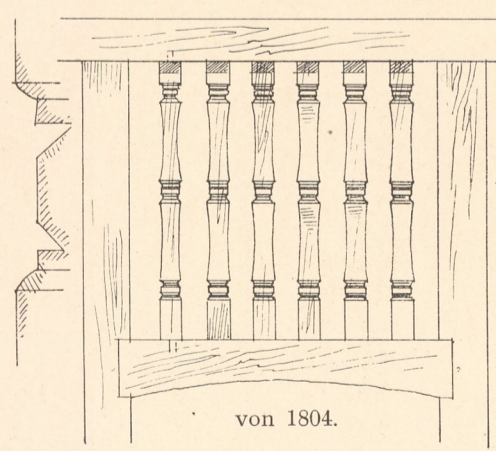


Abb. 12.



von 1804.

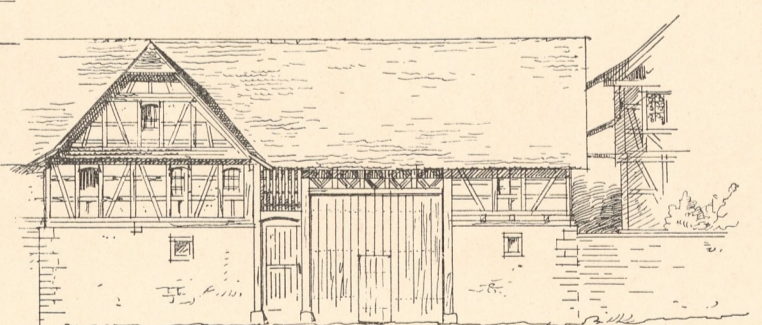


Abb. 14. Ansicht der Einfahrt.

