

Abb. 1. Haus in Bremke (um 1700). Querschnitt A B

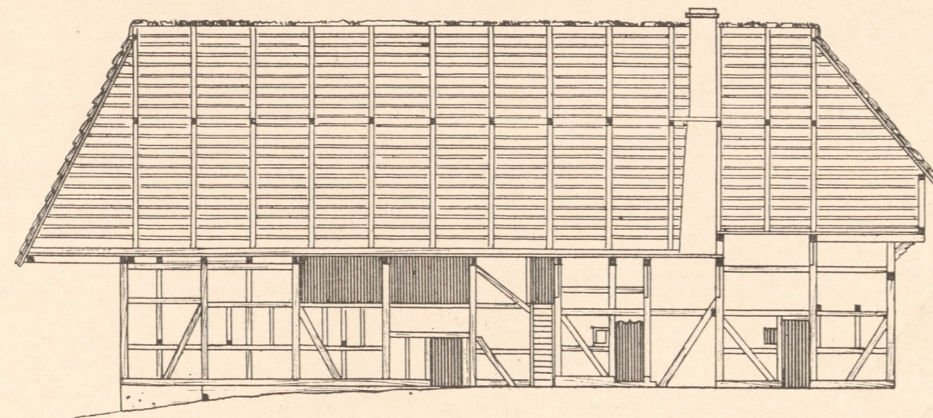


Abb. 3. Haus Warnecke in Glentorf (1703). Längenschnitt A B.

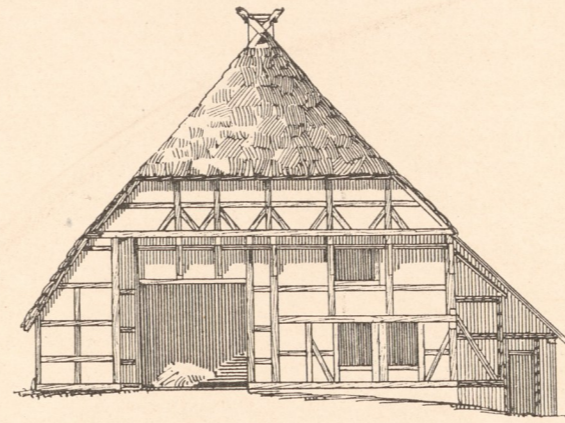


Abb. 4. Glentorf. Giebelansicht.

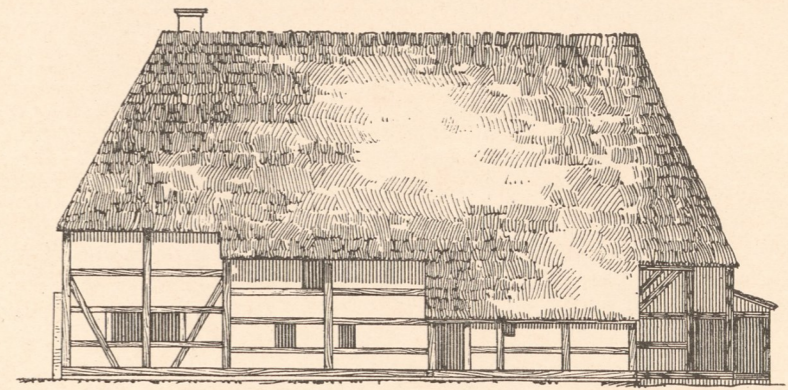


Abb. 6. Haus Altenbach in Boimsdorf. Längsansicht.

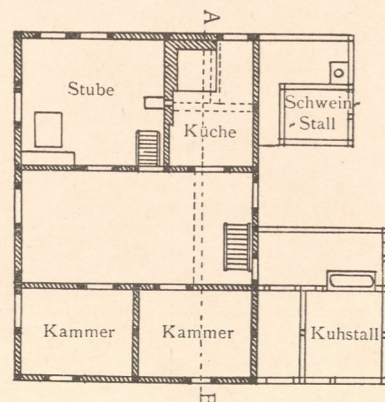


Abb. 2. Bremke. Grundriss.

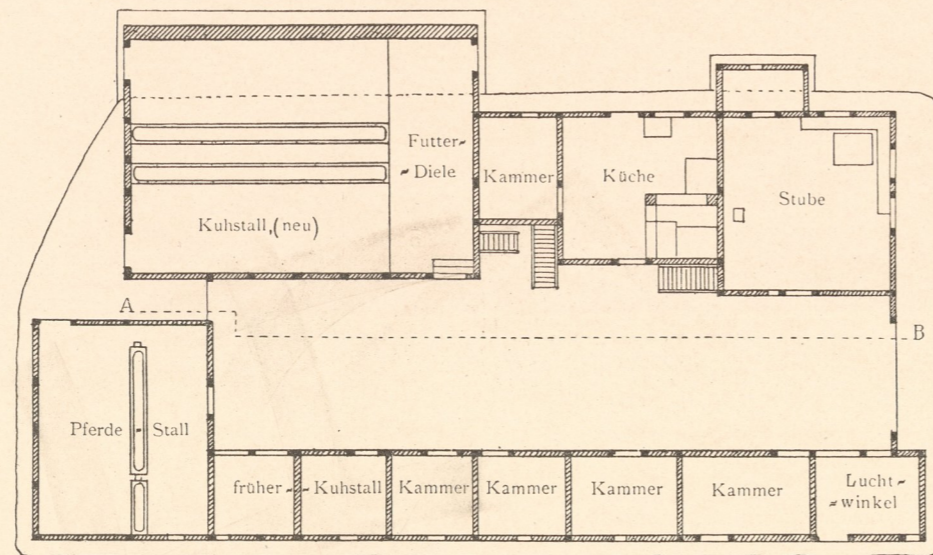


Abb. 5. Glentorf. Grundriss.

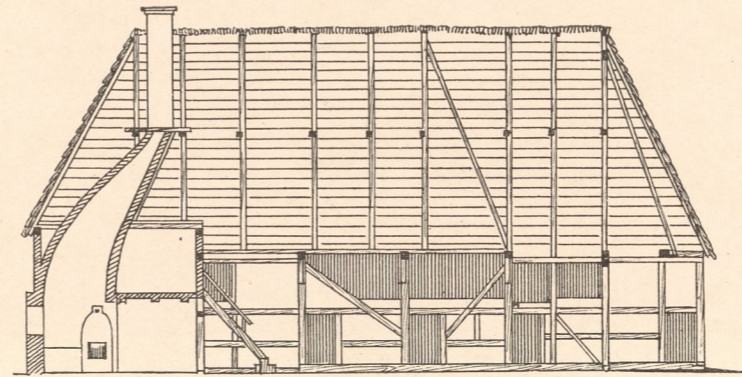


Abb. 7. Boimsdorf. Längenschnitt A B.

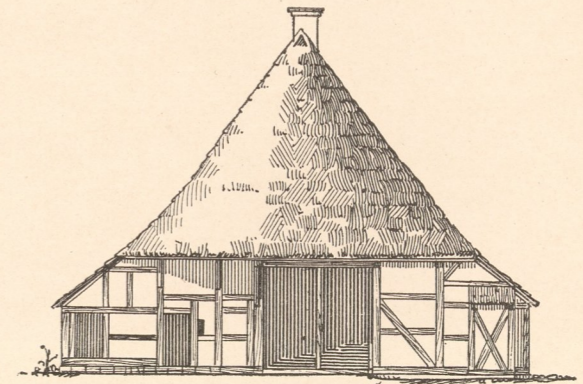
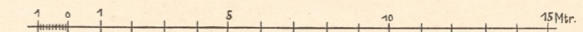


Abb. 8. Boimsdorf. Giebelseite.



Masstab für sämtliche Abbildungen.

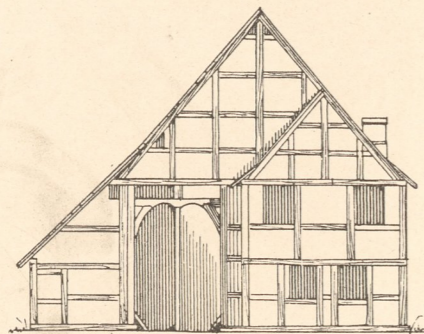


Abb. 10. Haus Nr. 14 (Pieper) in Heyen. Südseite.

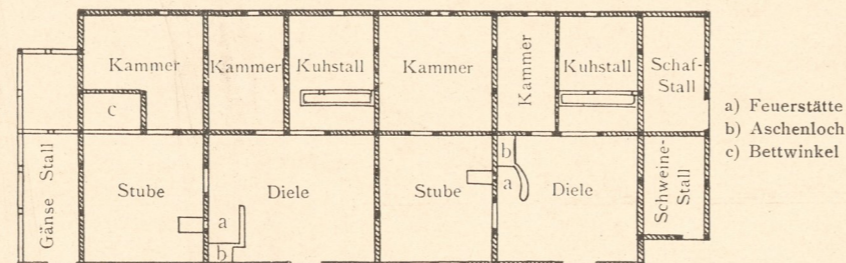


Abb. 12. Tagelöhnerhaus in Bergfeld (früher Spiker).

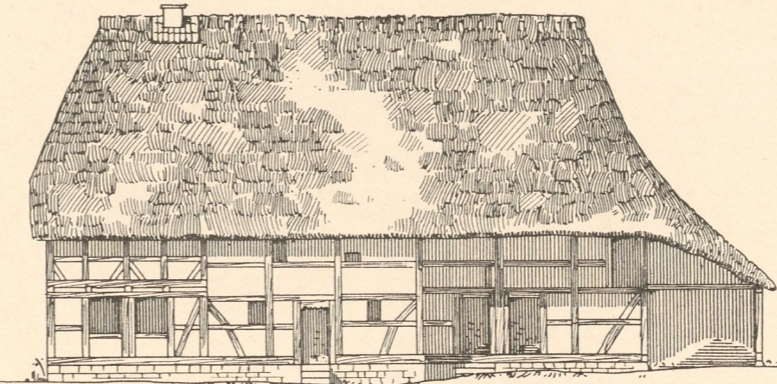


Abb. 14. Haus Nr. 109 (Altsitzer Thies) in Gross-Lafferde.

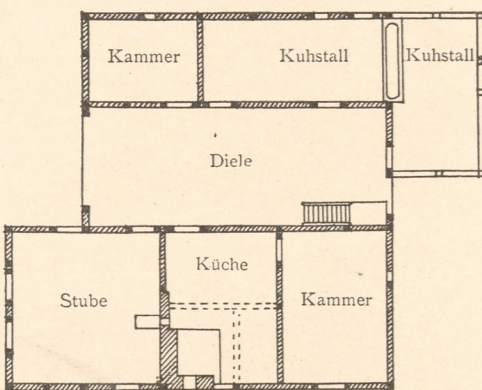


Abb. 11. Heyen. Grundriss.

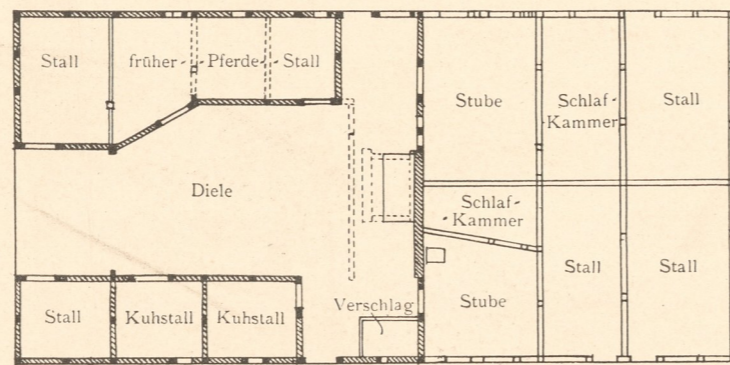


Abb. 13. Haus Nr. 12 in Neubrück (1660).

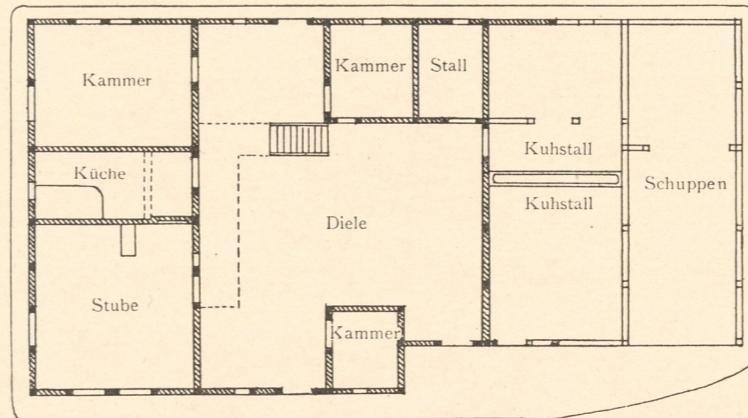


Abb. 15. Gross-Lafferde. Grundriss.

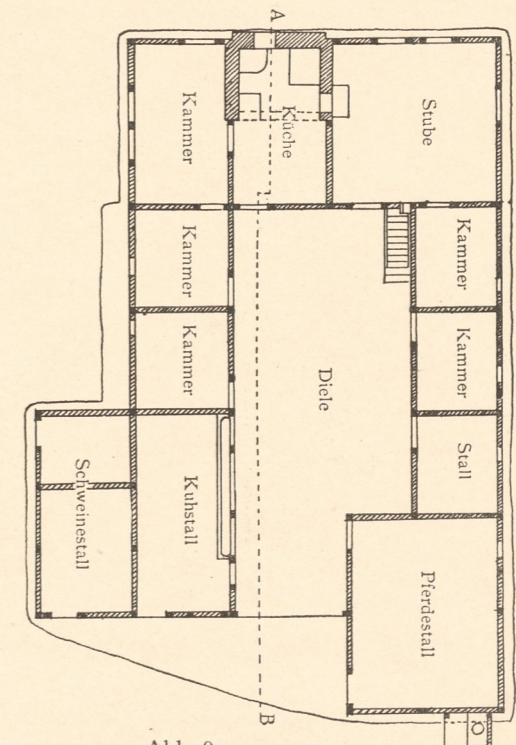


Abb. 9. Boimsdorf. Grundriss.

inventar
Abt. E
Nr. 1204



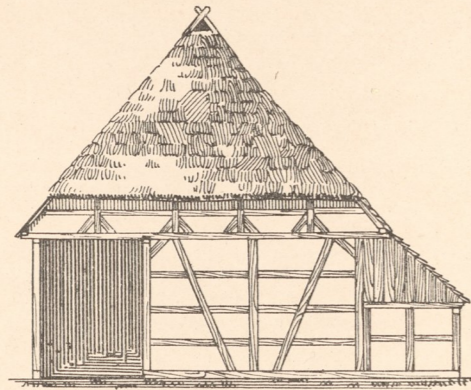


Abb. 1. Sonnenberg. Giebelseite.

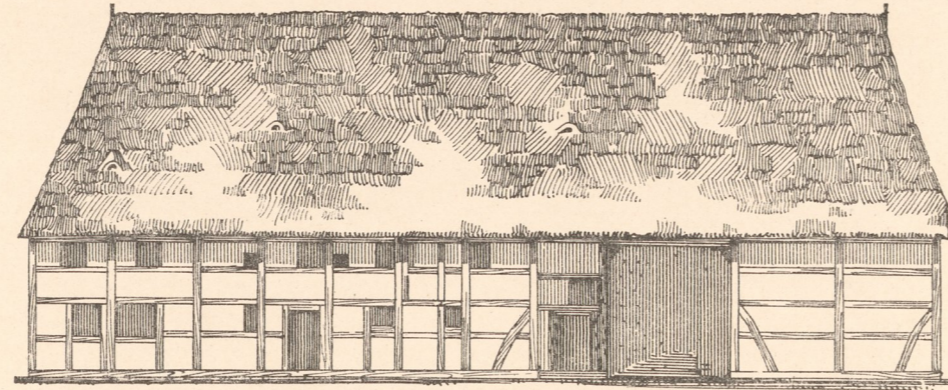


Abb. 2. Haus Nr. 5 in Sonnenberg. Längsansicht.

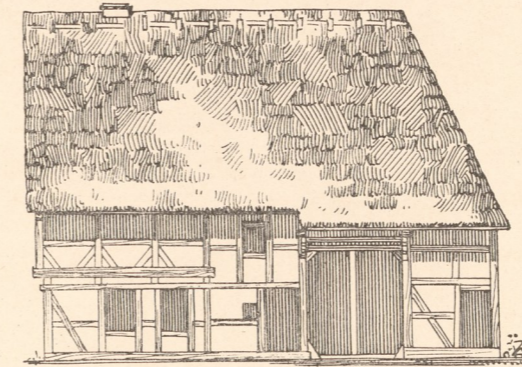


Abb. 6. Tagelöhnerhaus (Meyer) in Ochsendorf (1683). Längsansicht.

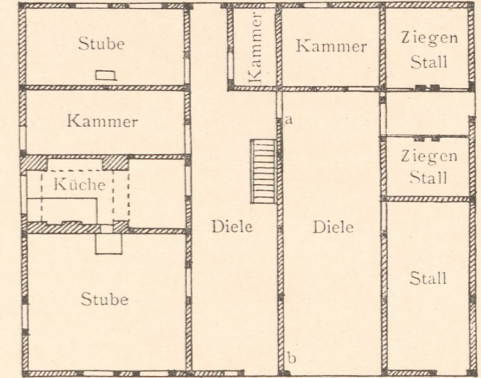


Abb. 7. Ochsendorf. Grundriss. (Wand ab später eingebaut)

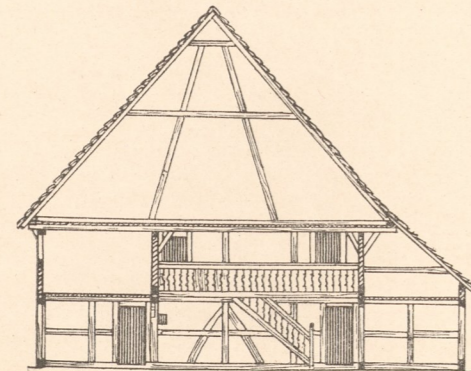


Abb. 3. Sonnenberg. Querschnitt AB.

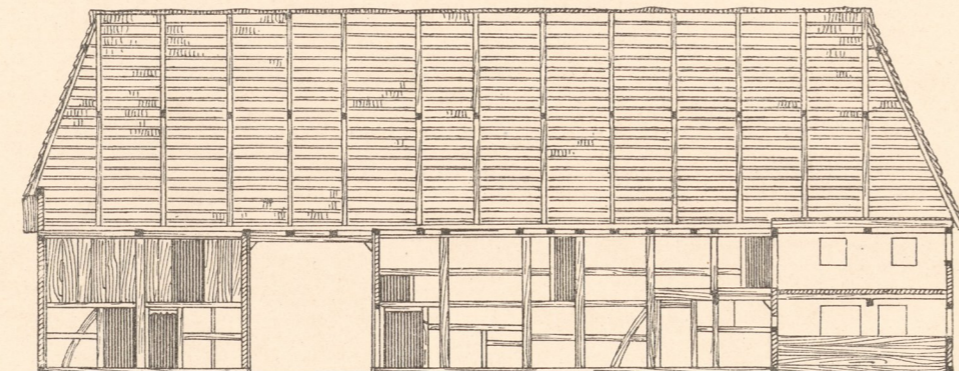


Abb. 4. Sonnenberg. Längenschnitt CD.

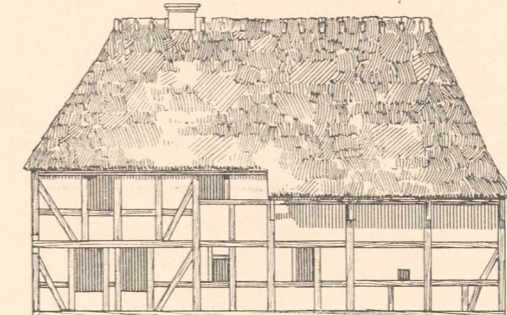


Abb. 8. Altes Pfarrwittwenhaus in Wahrstedt (1681). Längsansicht.

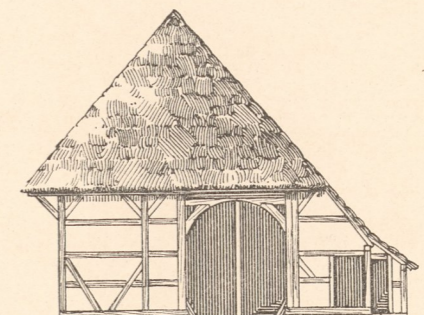


Abb. 9. Wahrstedt. Giebelseite.

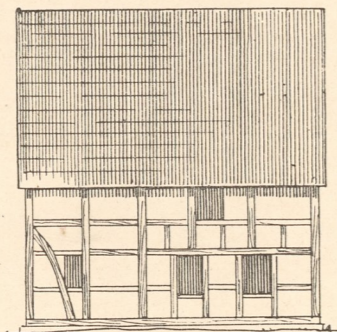


Abb. 12. Haus Nr. 19 in Dohnsen. Längsansicht.

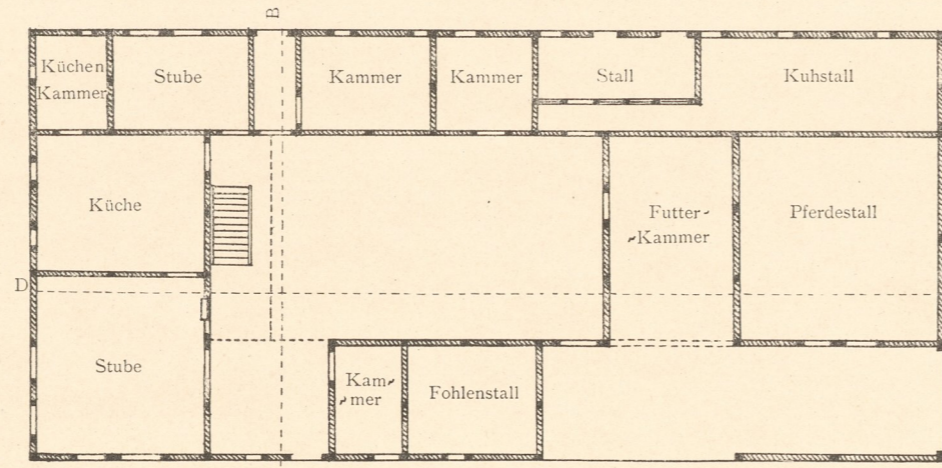


Abb. 5. Sonnenberg. Grundriss.

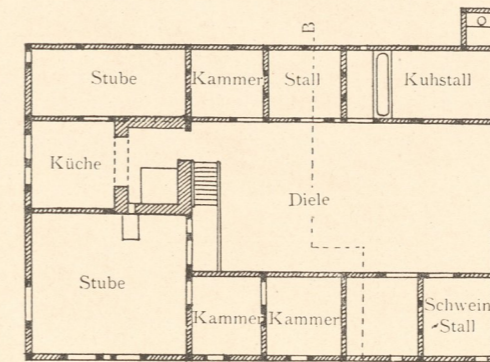


Abb. 10. Wahrstedt. Grundriss.

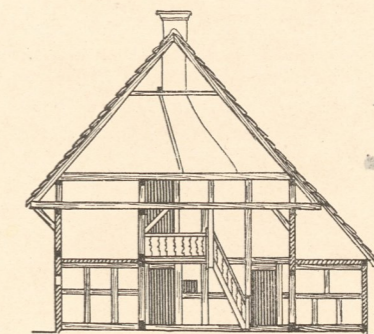


Abb. 11. Wahrstedt. Schnitt AB.

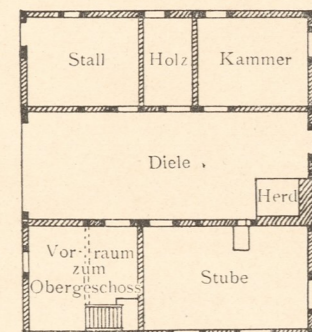


Abb. 13. Dohnsen. Grundriss.

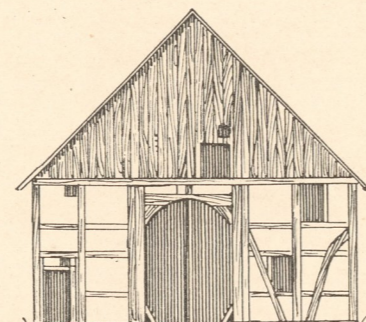


Abb. 14. Dohnsen. Giebelseite.

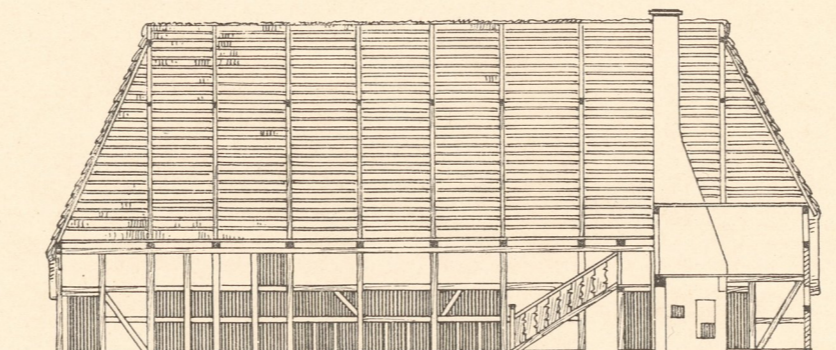


Abb. 15. Bergfeld. Längenschnitt AB.

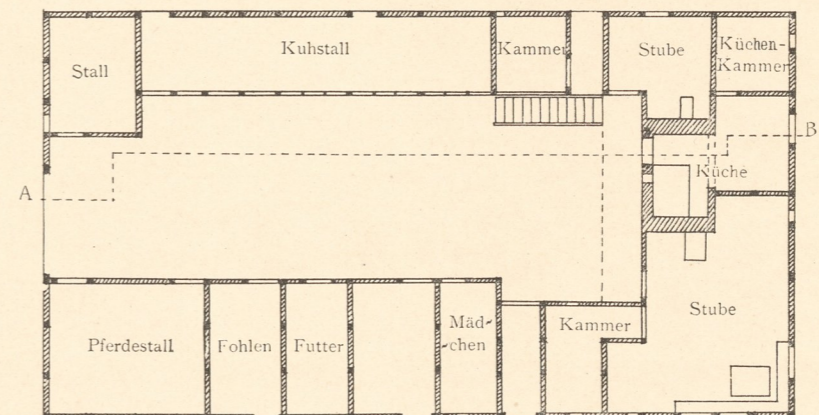
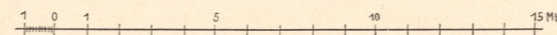


Abb. 16. Haus der Wwe. Jordan in Bergfeld.



inventar
Abth E
Nr. 1204

Aufgen. von Möhrenslayer und Jenrich.

Zinkhochätzung von Albert Frisch, Berlin W.

Verlag von Gerhard Kühtmann, Dresden.



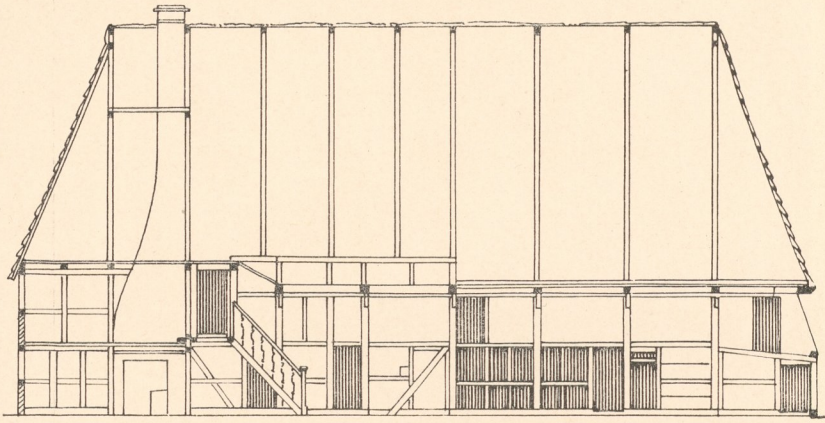


Abb. 1. Haus Müller in Velpke. Längenschnitt.

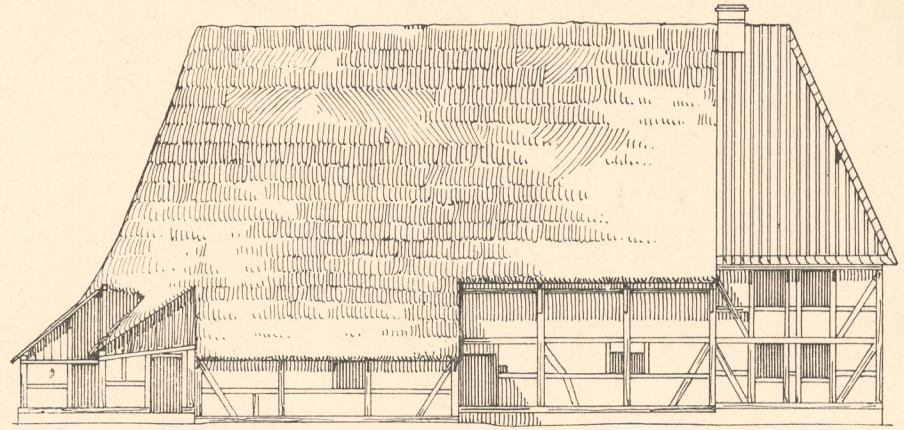


Abb. 2. Haus Müller in Velpke. Längsansicht.

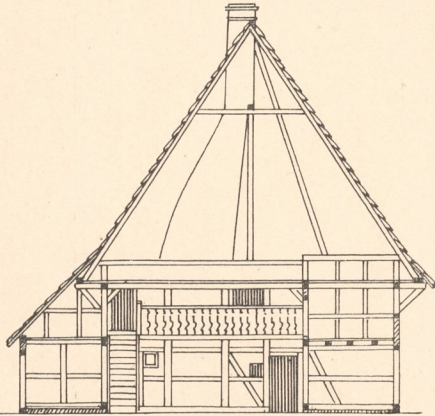


Abb. 4. Velpke. Querschnitt.

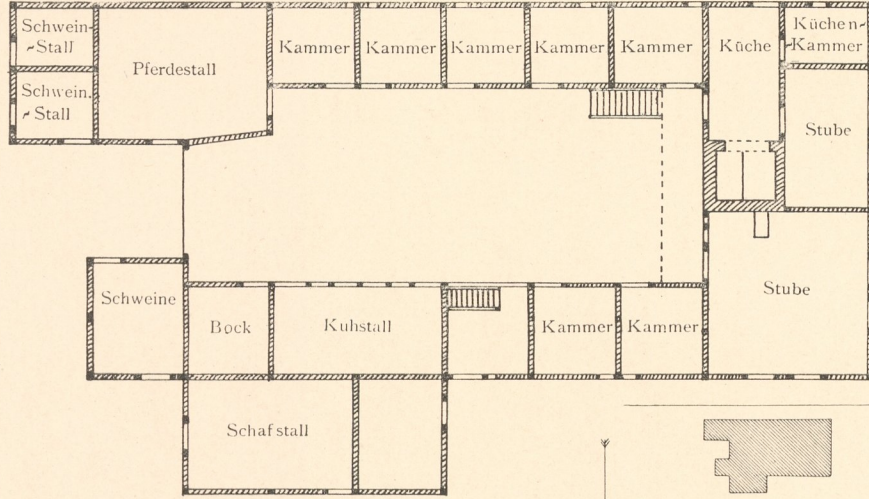


Abb. 3. Haus Müller in Velpke von 1678. Grundriss.

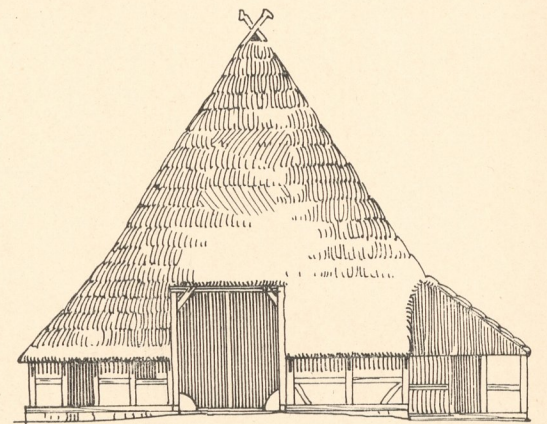


Abb. 5. Velpke. Giebelansicht.

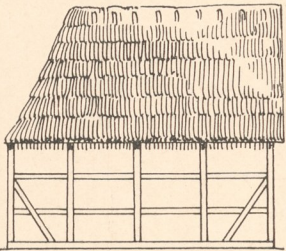


Abb. 7. Seitenansicht.

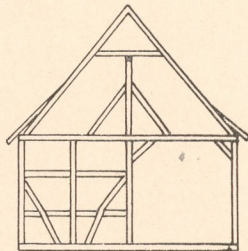


Abb. 8. Querschnitt.

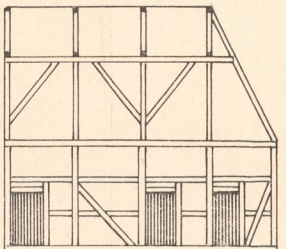


Abb. 9. Längenschnitt.

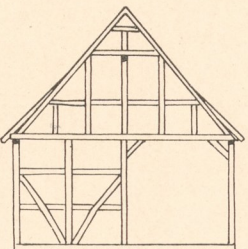


Abb. 10. Giebelansicht.

Abb. 7-11. Spieker in Lehre.

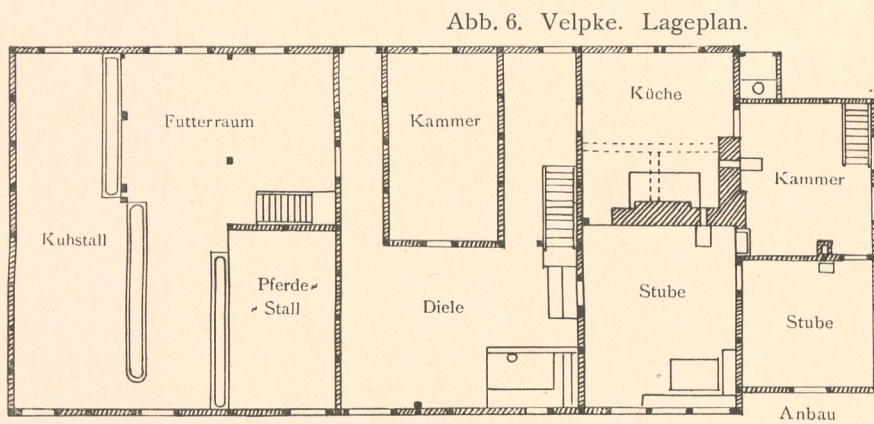


Abb. 6. Velpke. Lageplan.

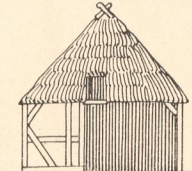


Abb. 12.

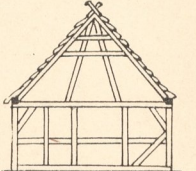


Abb. 13.

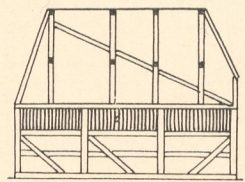


Abb. 14.

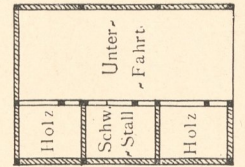


Abb. 15.

Abb. 16. Haus Schilling in Dankelsheim No. 2. 1606.

Abb. 12-15. Spieker auf dem Grundstück Müller in Neubrük No. 12a.

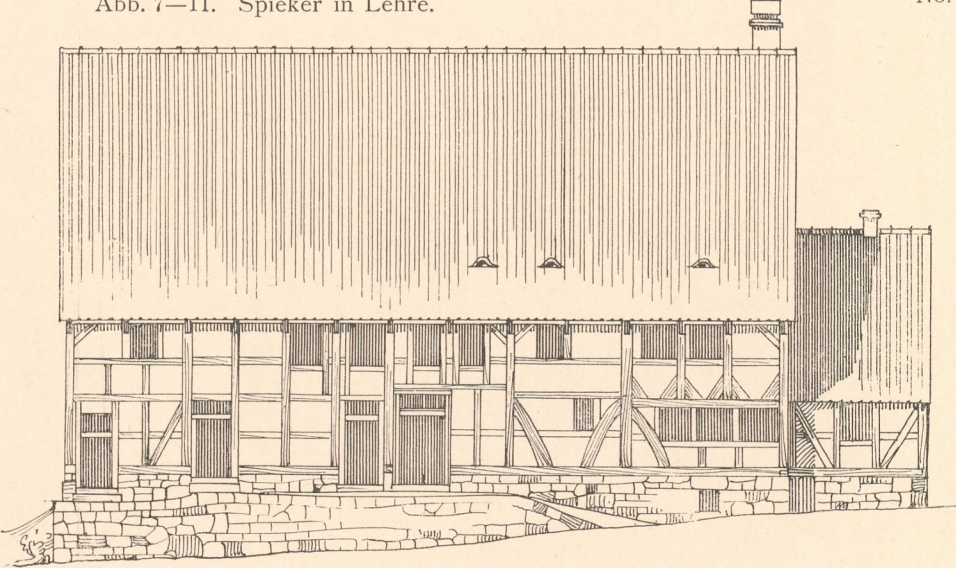


Abb. 17. Haus Schilling in Dankelsheim. Längsansicht.

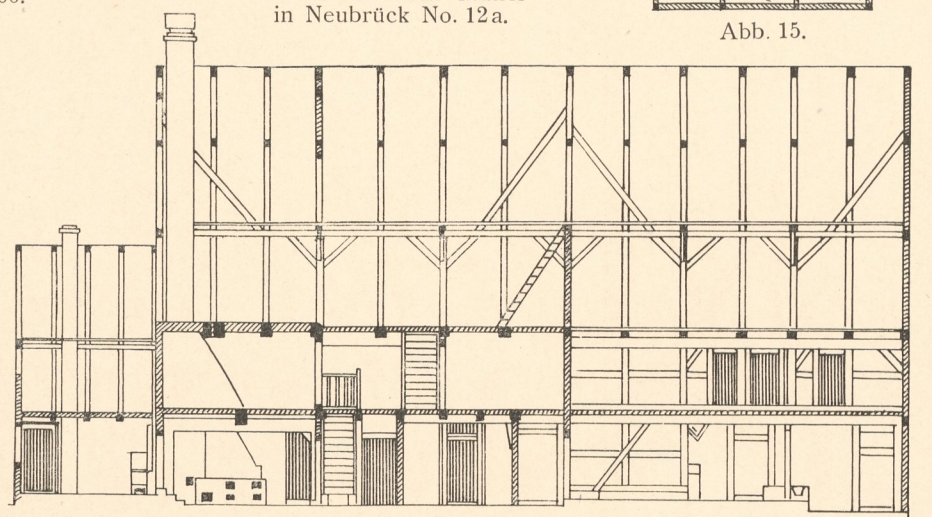


Abb. 18. Haus Schilling in Dankelsheim. Längenschnitt.

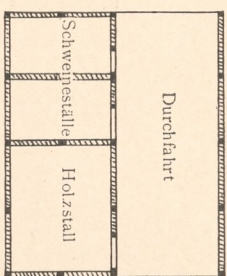


Abb. 11. Spieker in Lehre. Grundriss.

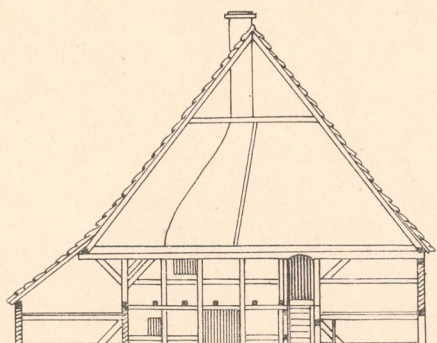


Abb. 21. Wolter in Lehre. Querschnitt.

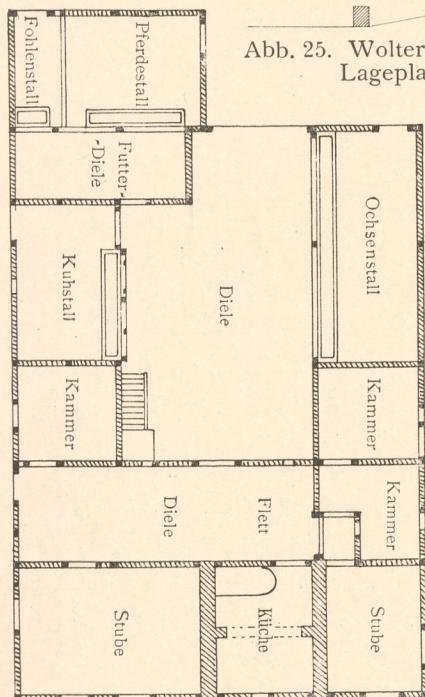


Abb. 24. Haus Wolter in Lehre.

Abb. 25. Wolter in Lehre. Lageplan.

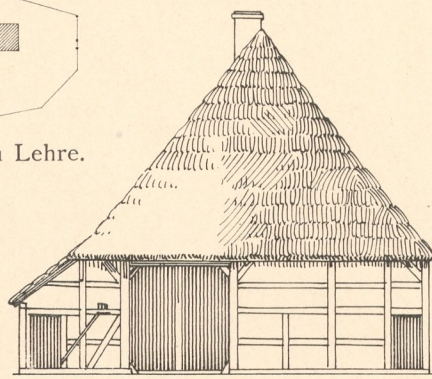


Abb. 20. Wolter in Lehre. Giebel.

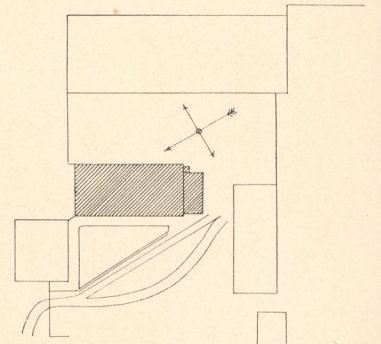


Abb. 19. Dankelsheim. Lageplan.

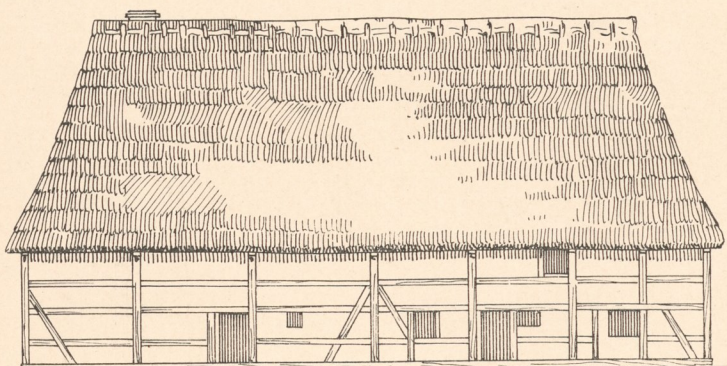


Abb. 22. Haus Wolter in Lehre. Längsansicht.

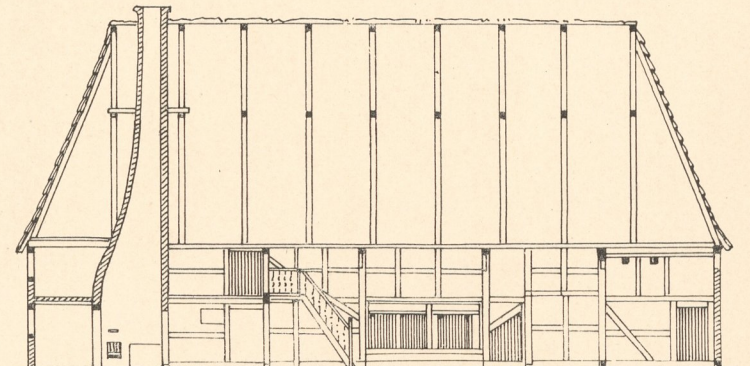


Abb. 23. Haus Wolter in Lehre. Längenschnitt.

Augen. u. gez. von Möhrensclager u. Jenrich.

Zinkhochätzung von Albert Frisch, Berlin W.

Verlag von Gerhard Küttmann, Dresden.

Inventar
Abth E
Nr. 1204

