



Abb. 1. Alt-Blessin, Südostseite.

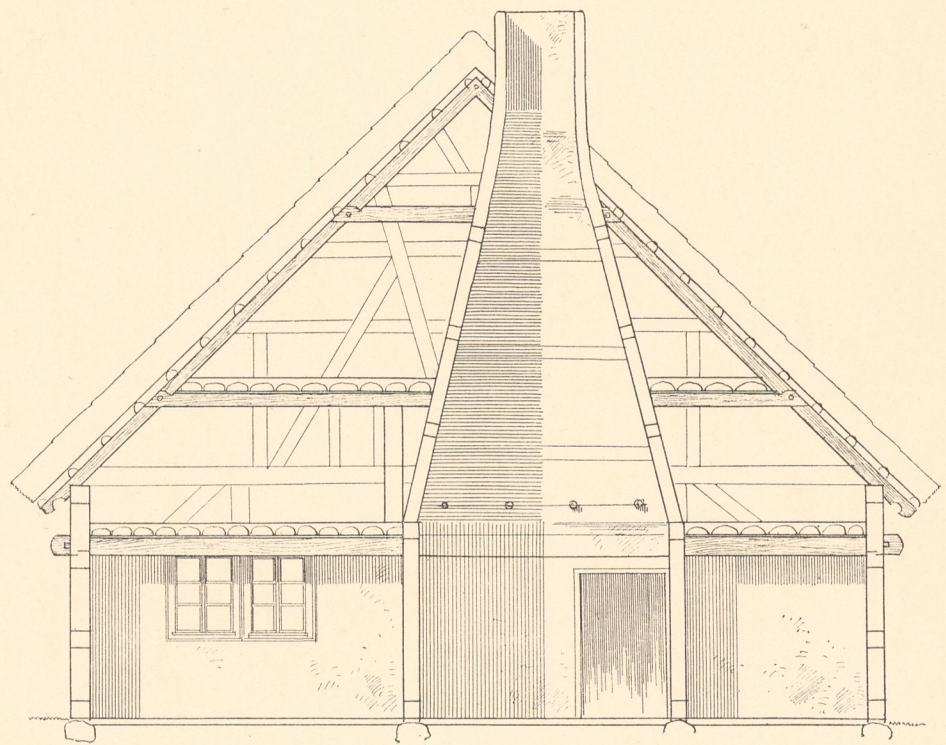


Abb. 2. Alt-Blessin, Querschnitt a b.

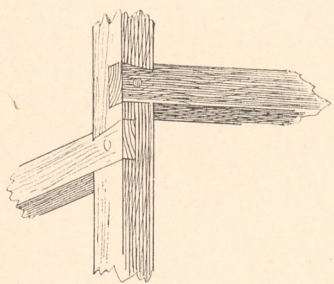


Abb. 4. Alt-Blessin, Holzkonstruktion zum Rauchmantel.

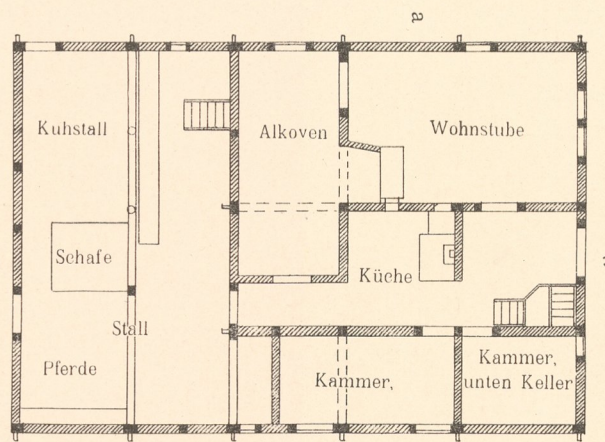


Abb. 3. Alt-Blessin, Grundriss vom Erdgeschoss.

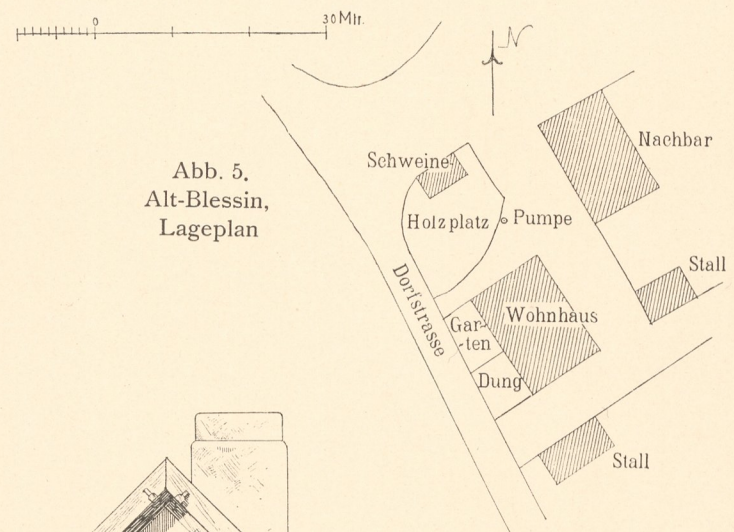


Abb. 5. Alt-Blessin, Lageplan

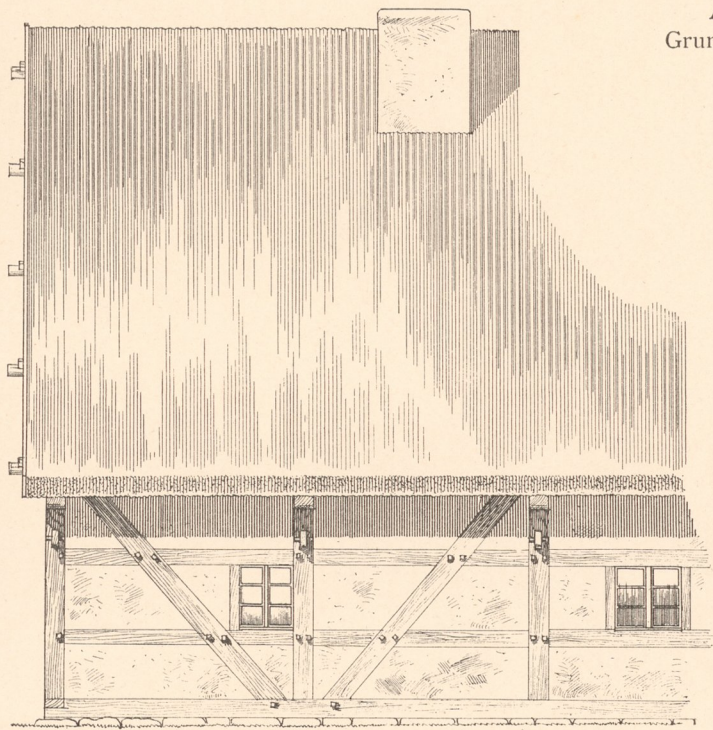


Abb. 6. Alt-Blessin, Teil der Nordostseite.

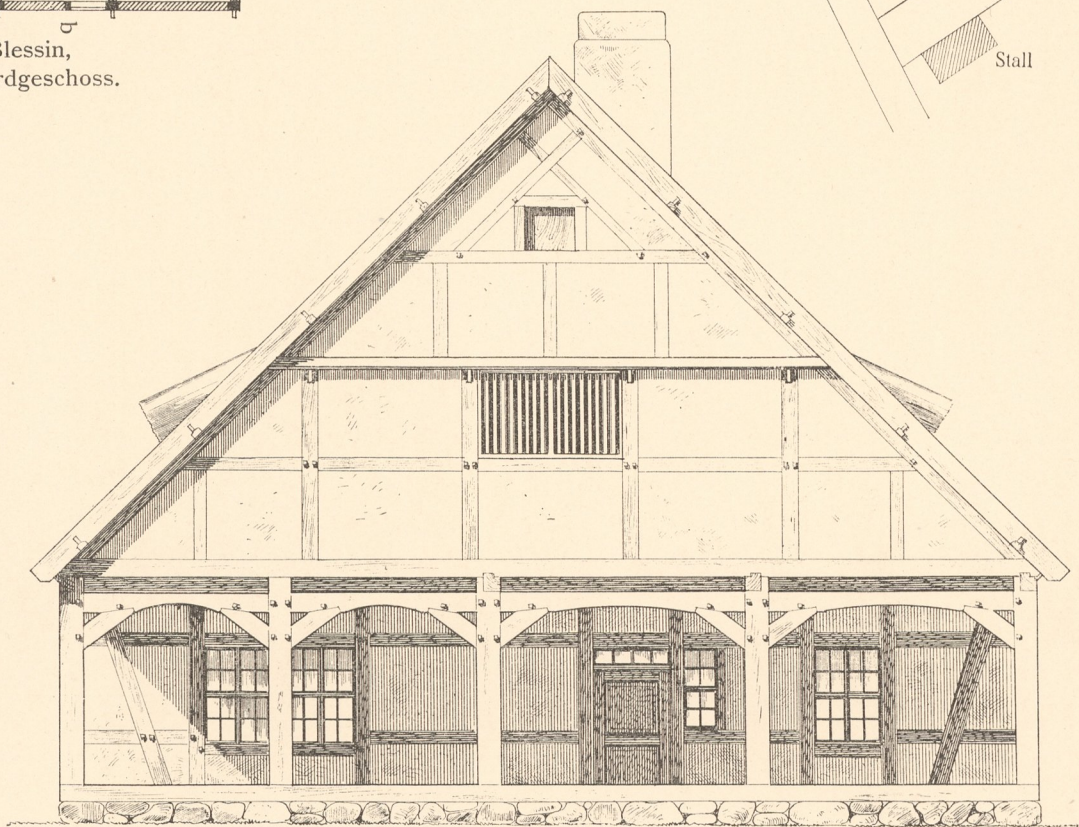


Abb. 8. Zäckerick, Giebelansicht mit Laube.

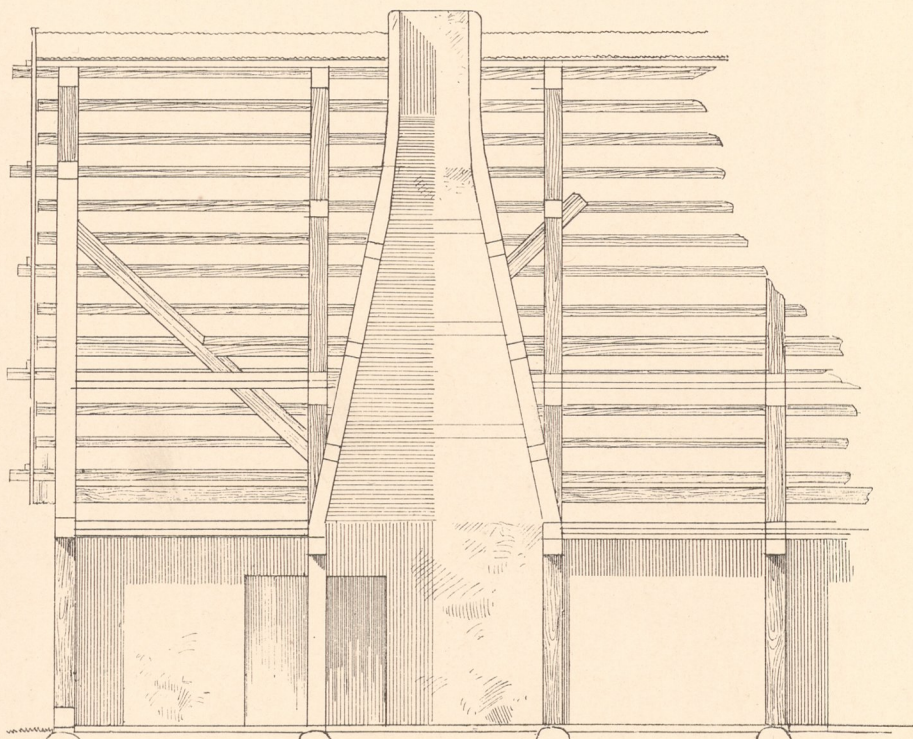


Abb. 7. Alt-Blessin, Teil vom Längenschnitt c d.

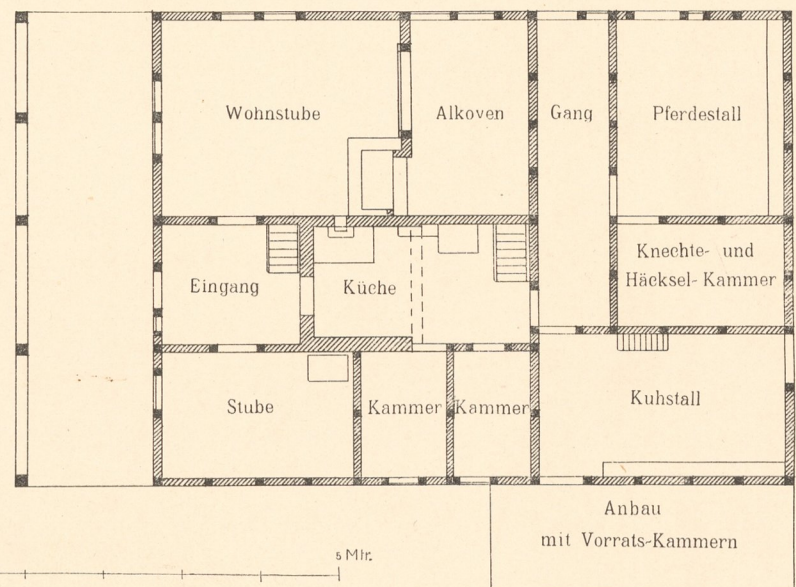


Abb. 10. Zäckerick Grundriss vom Erdgeschoss.

Masstab zu Abb. 1, 2, 6, 7, 8.

Masstab zu Abb. 3 und 10.

