

Abb. 1. Neukenroth. Längsansicht.

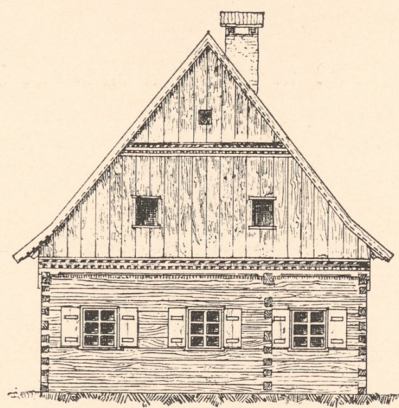


Abb. 2. Neukenroth. Strassenseite.

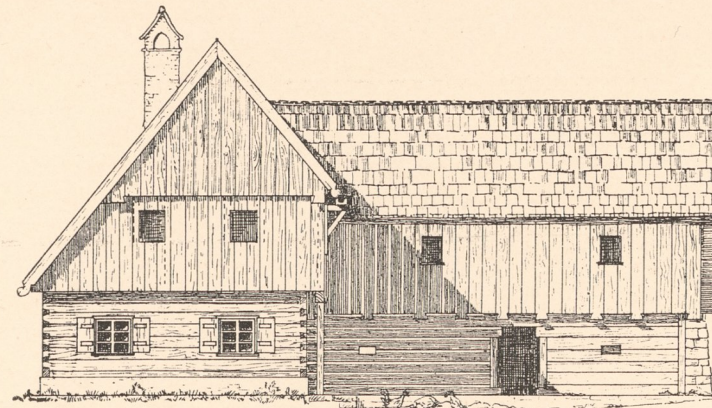


Abb. 4. Edlendorf. Ansicht.

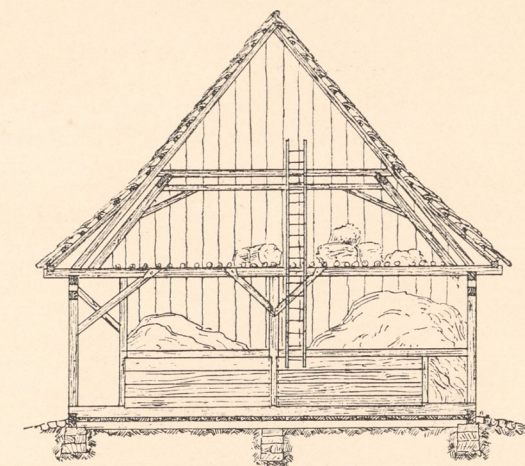


Abb. 5. Edlendorf. Schnitt durch die Scheune nach E F.

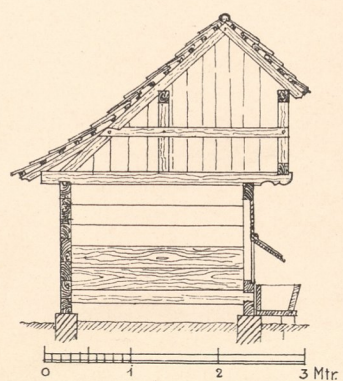


Abb. 17. Neukenroth. Schnitt durch den Schweinestall.

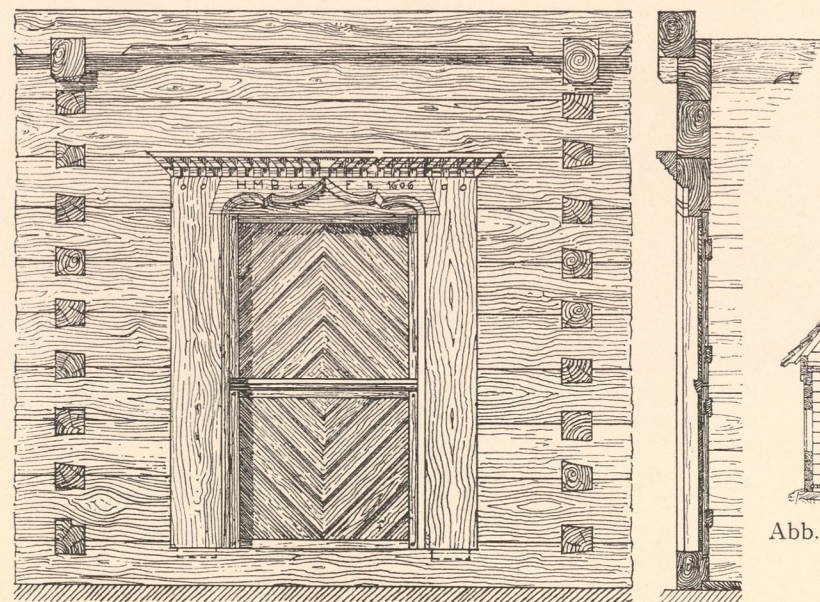
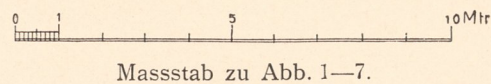


Abb. 8. Neukenroth. Hausthür.



Massstab zu Abb. 1—7.

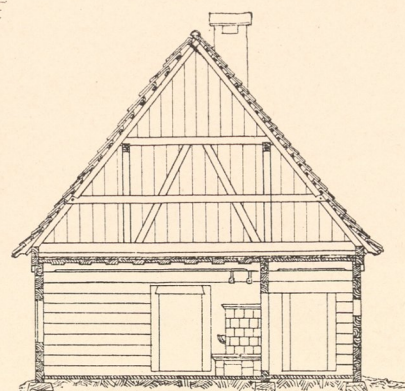


Abb. 3. Neukenroth. Schnitt A B.

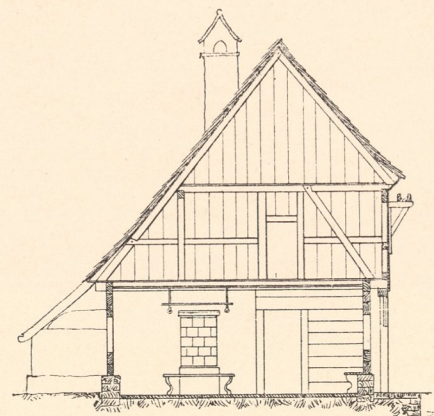


Abb. 6. Edlendorf. Schnitt C D.

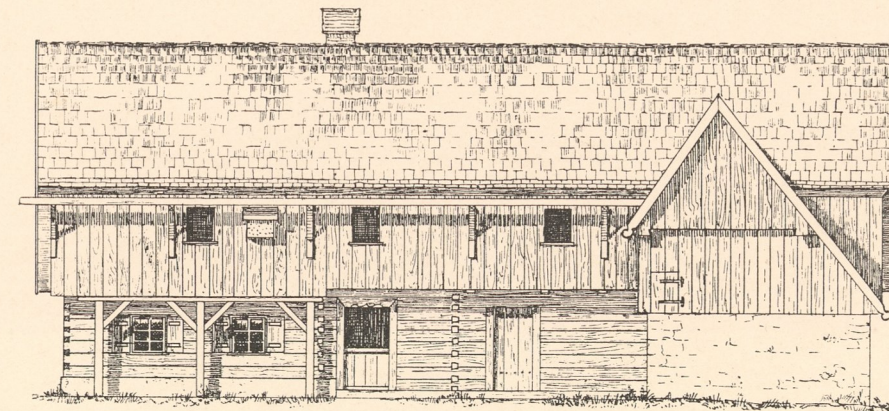
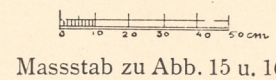


Abb. 7. Edlendorf. Ansicht.



Massstab zu Abb. 15 u. 16.

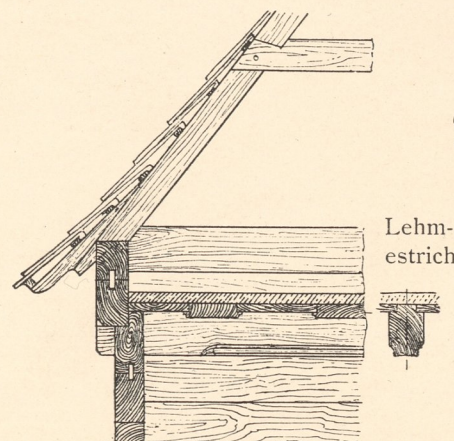
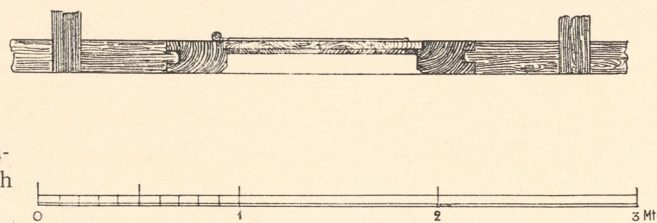


Abb. 9. Neukenroth. Schnitt durch die Stubendecke.



Massstab zu Abb. 8—12.

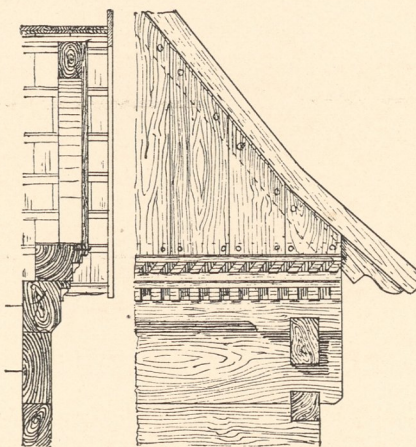


Abb. 10. Neukenroth. Einzelnes vom Giebel.

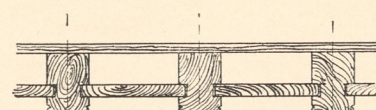


Abb. 15. Edlendorf. Stubendecke.

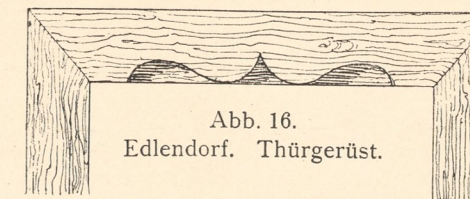


Abb. 16. Edlendorf. Thürgerüst.

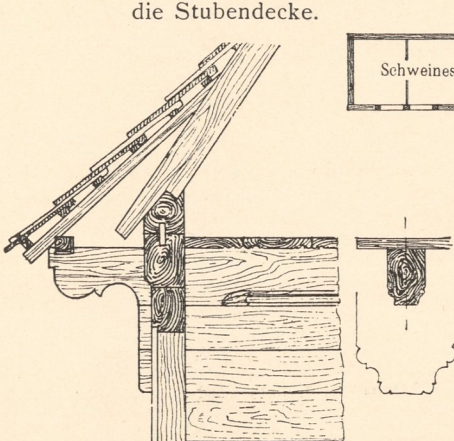


Abb. 11. Von einem Hause in Friedersdorf bei Rothenkirchen vom Jahre 1686.

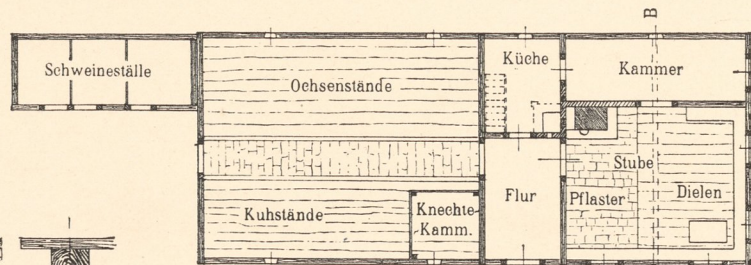
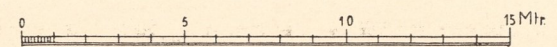


Abb. 13. Bauernhaus in Neukenroth. Grundriss.



Massstab zu Abb. 13 und 14.

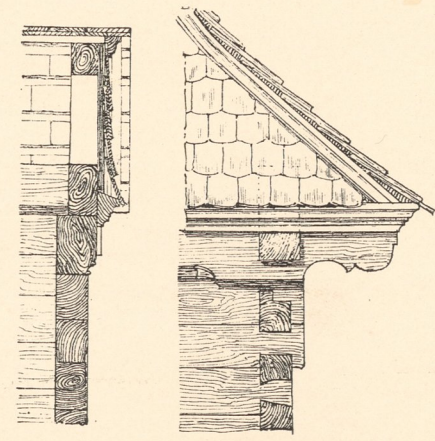


Abb. 12. Von Friedersdorf bei Rothenkirchen.

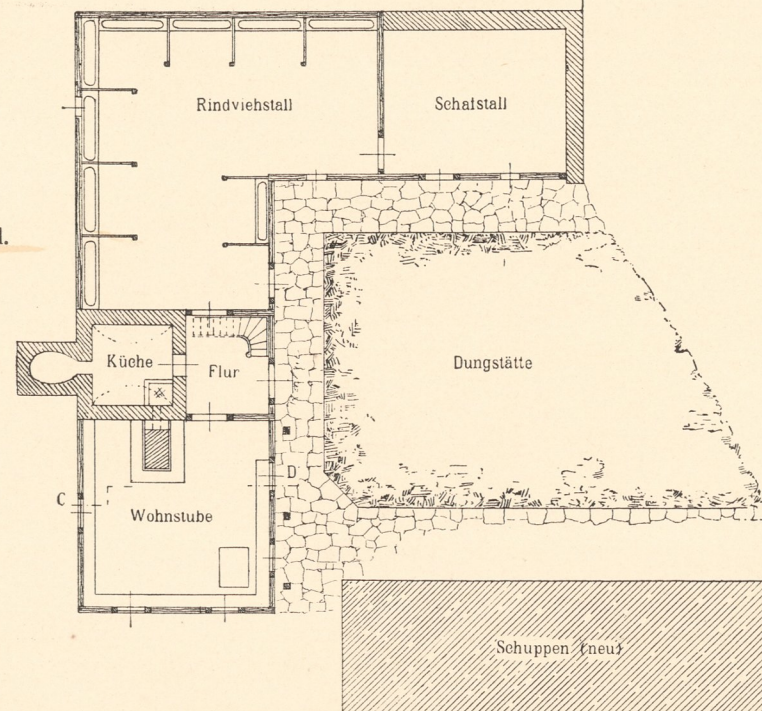


Abb. 14. Edlendorf. Lageplan.

