

Abb. 4. Thürwand. Abb. 5. Fensterwand. Abb. 4 und 5. Erhardbauer.

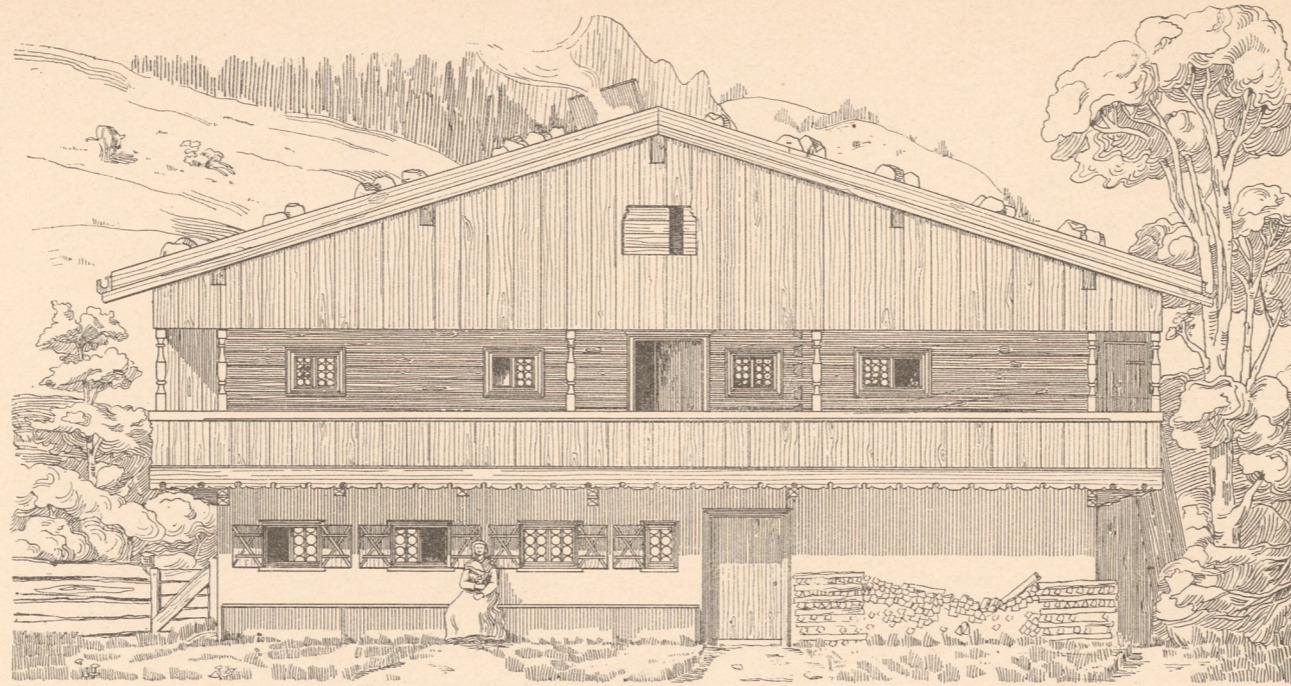
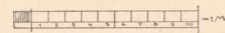


Abb. 1. Erhardbauer. Vorderansicht.

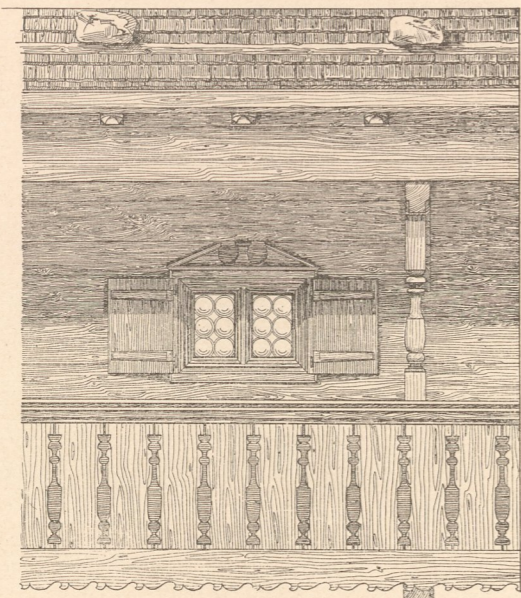


Abb. 6. Rothmesmerhaus. Galeriedetail.

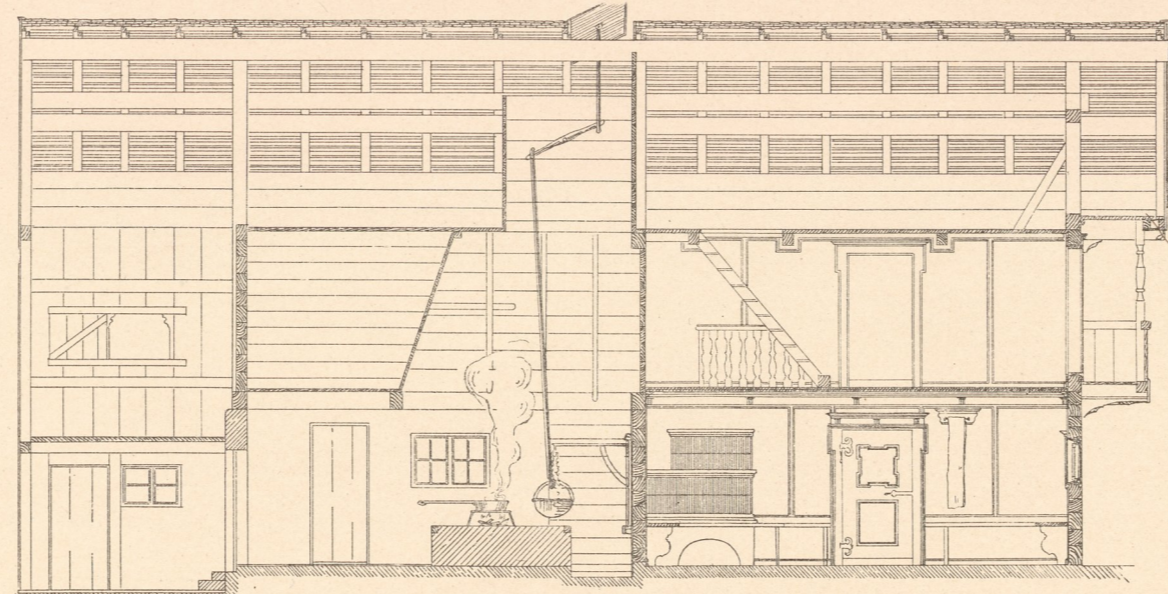
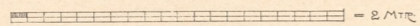


Abb. 3. Erhardbauer. Längenschnitt A B.

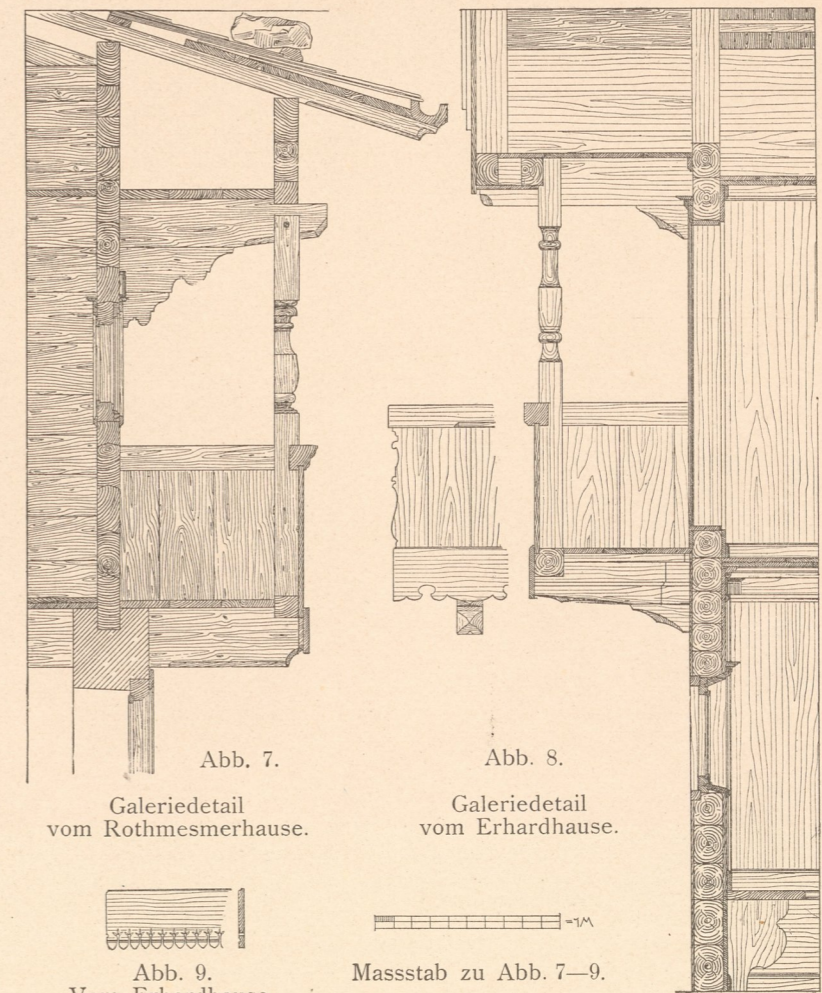


Abb. 7. Galleriedetail vom Rothmesmerhaus. Abb. 8. Galleriedetail vom Erhardbauer.

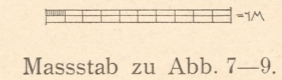
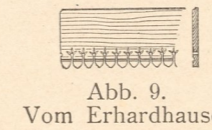


Abb. 9. Vom Erhardbauer.

Masstab zu Abb. 7-9.

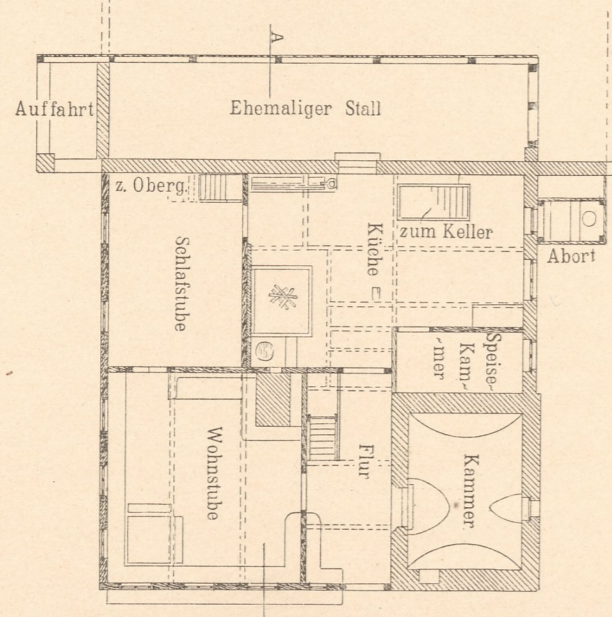


Abb. 10. Erhardbauer. Erdgeschoss.

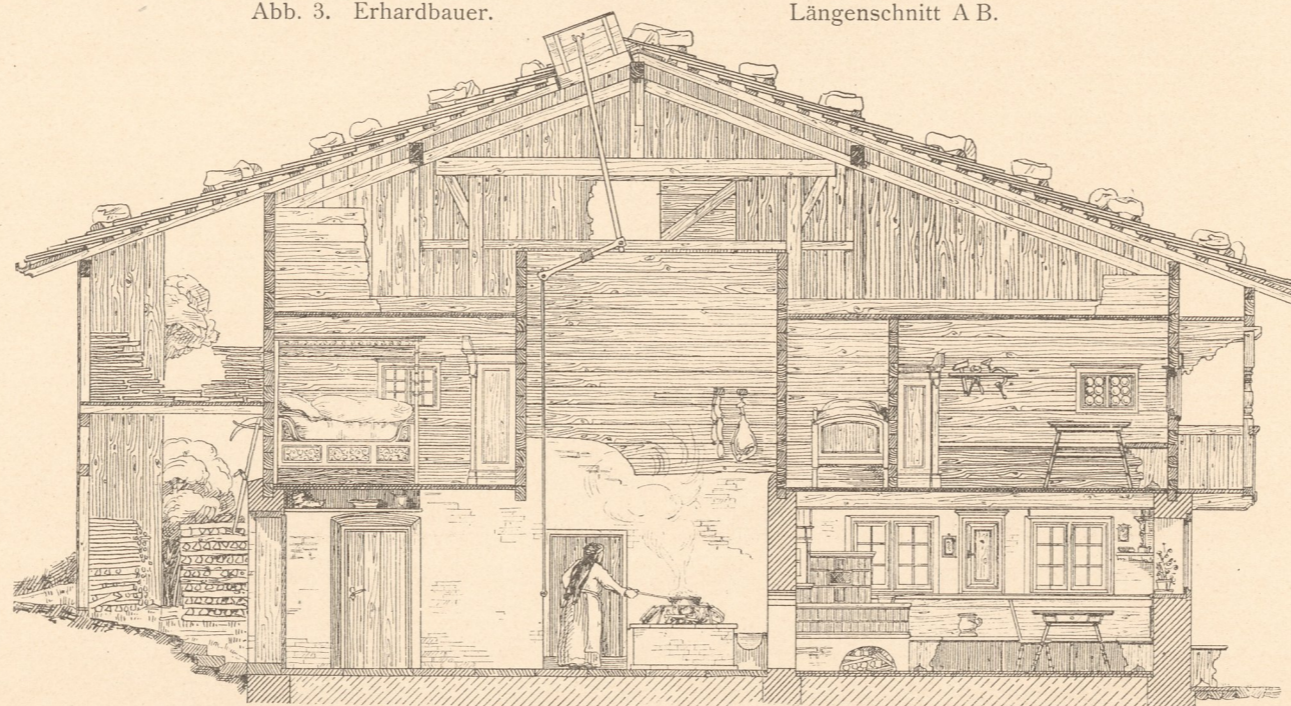
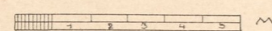


Abb. 2. Rothmesmerhaus. Querschnitt B A.

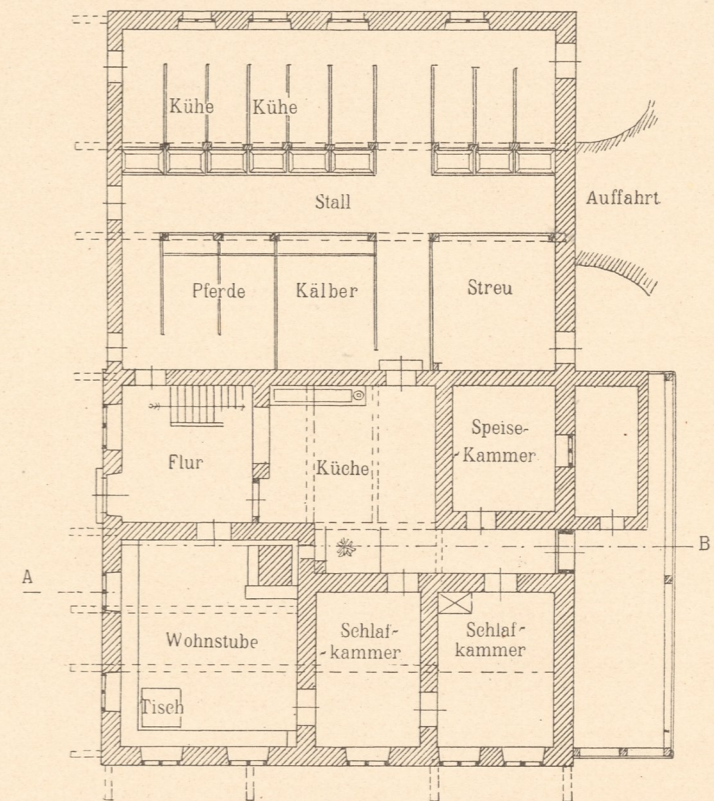
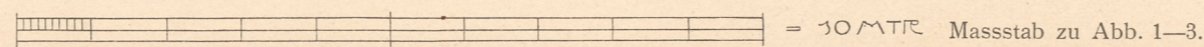
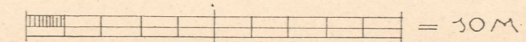


Abb. 11. Rothmesmerhaus. Erdgeschoss.



Verlag
Nr. 1204

Aufgen. u. gez. von Buchert.

Zinkhochätzung von Albert Frisch, Berlin W.

Verlag von Gerhard Kühtmann, Dresden.



UP
TUG