

BAUERNHAUS IN KIEFERSFELDEN UND NEUNERMÜHLE
IN OBERAUDORF (INNTHAL).

BAYERN NR. 3.

DAS BAUERNHAUS IN DEUTSCHLAND.

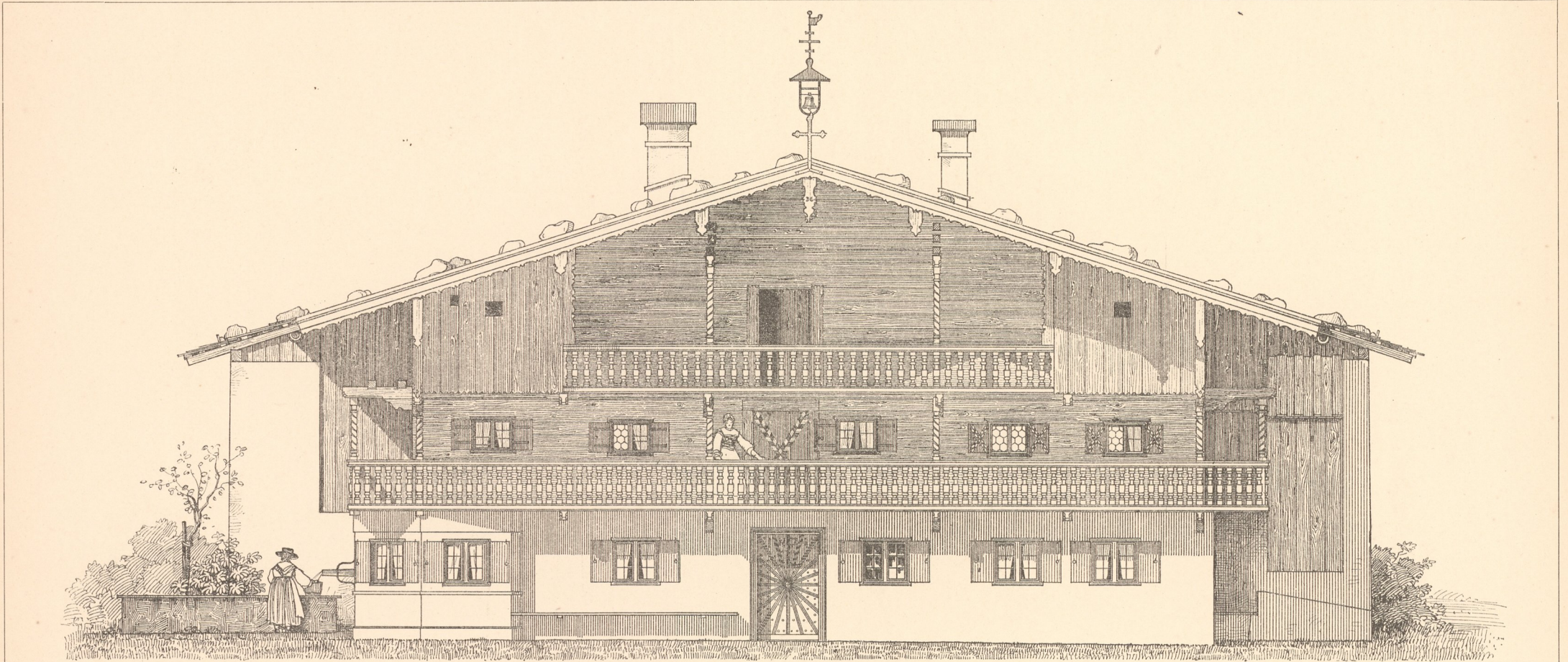
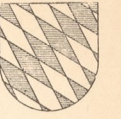


Abb. 1. Kiefersfelden, Vorderansicht.

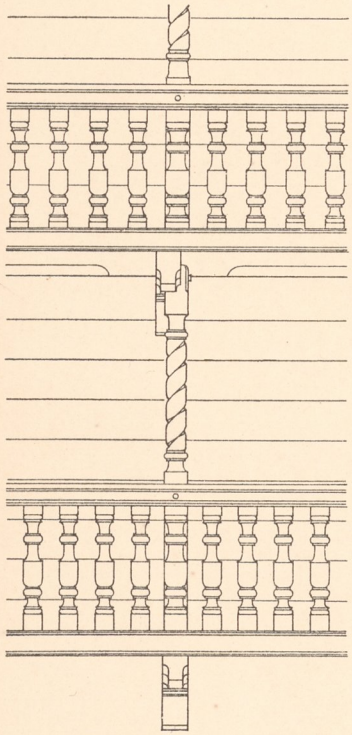


Abb. 3. Kiefersfelden, Galeriedetail. Ansicht.



Abb. 2. Kiefersfelden, Erkerstube.

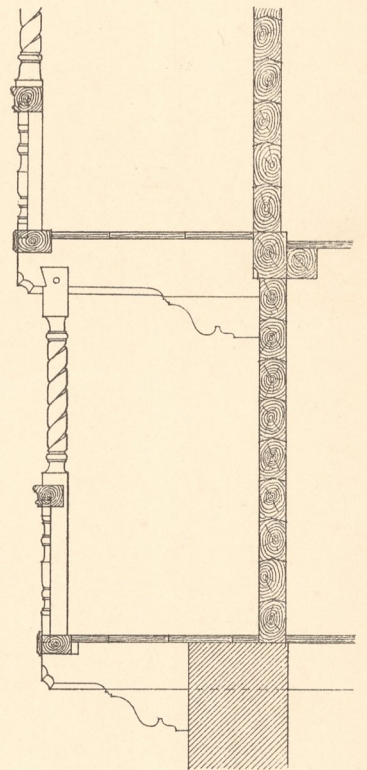


Abb. 4. Kiefersfelden, Galeriedetail. Schnitt.

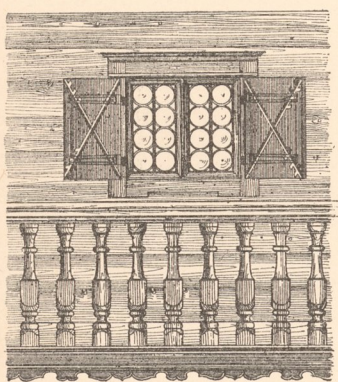


Abb. 6. Oberaudorf, Einzelheit der Front.

Masstab
zu Abb. 6-9 u. 11.

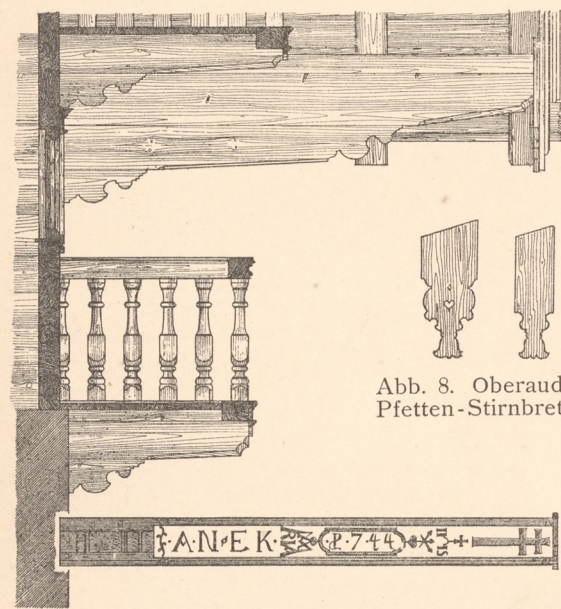


Abb. 8. Oberaudorf, Pfetten-Stirnbretter.

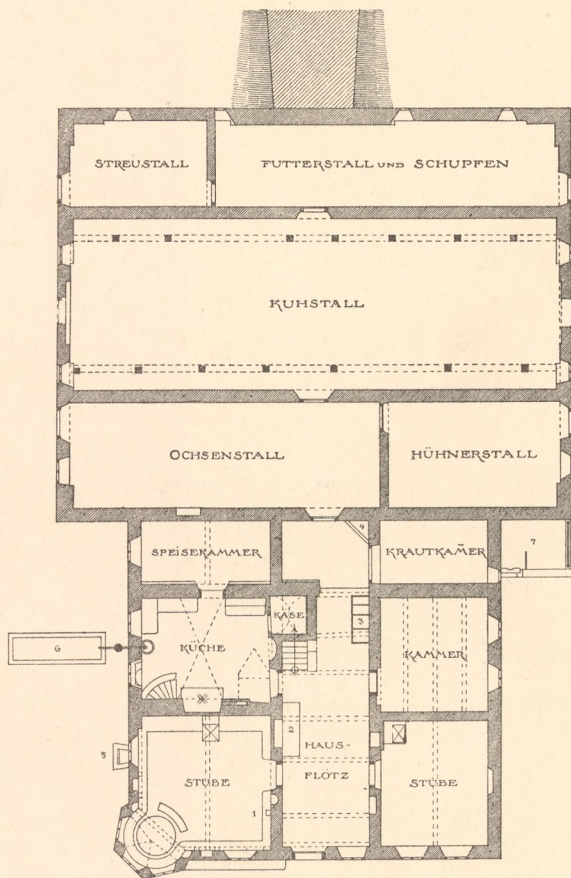


Abb. 5. Kiefersfelden, Grundriss.

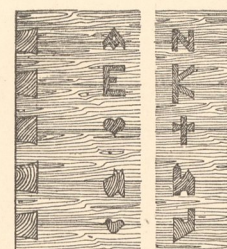


Abb. 9. Oberaudorf, Detail der Blockwand.

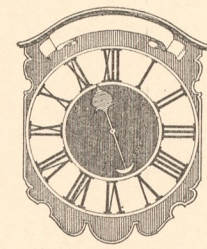


Abb. 10. Oberaudorf, Wanduhr.

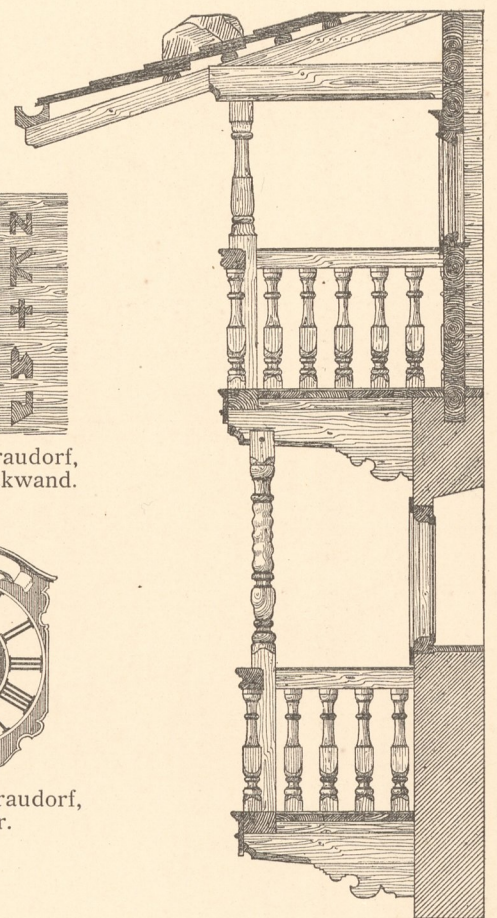


Abb. 11. Oberaudorf, Teil des Frontschnittes.

Aufgen. von Studirenden der techn. Hochschule München.

Zinkhochätzung von Albert Frisch, Berlin W.

Verlag von Gerhard Kührtmann, Dresden.

Verlag
Abt. 2
Nr. 1204

