

BAUERNHÄUSER IN KIPPENHEIM BEI LAHR  
UND EINZELHEITEN AUS HALTINGEN  
UND ISTEIN BEI BASEL.

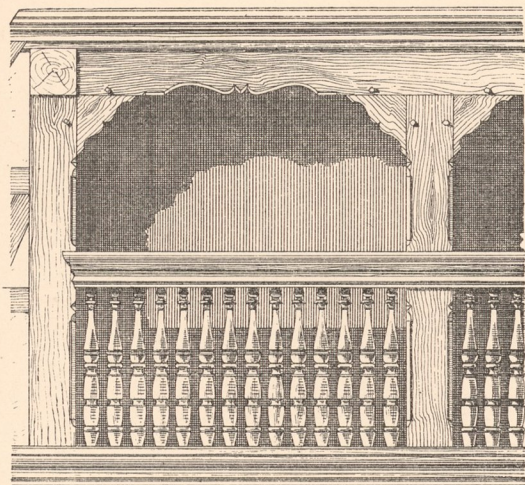
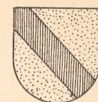


Abb. 1. Kippenheim Nr. 58. Holzlaube.

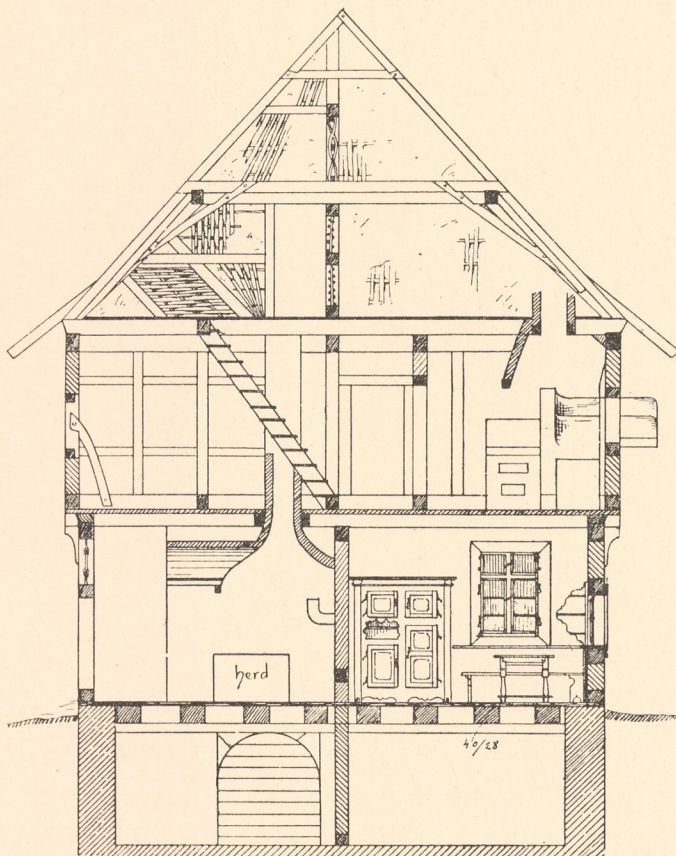


Abb. 3. Kippenheim Nr. 227. Querschnitt.  
Massstab zu Abb. 3, 5, 6, 8 und 11.

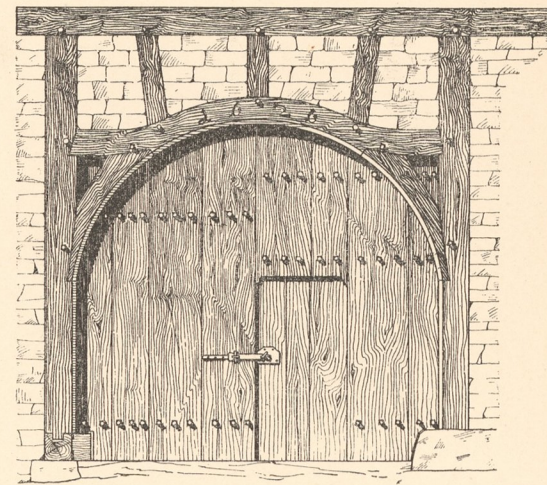


Abb. 2. Scheunenthor aus Haltingen.  
(Vgl. Abb. 10.)

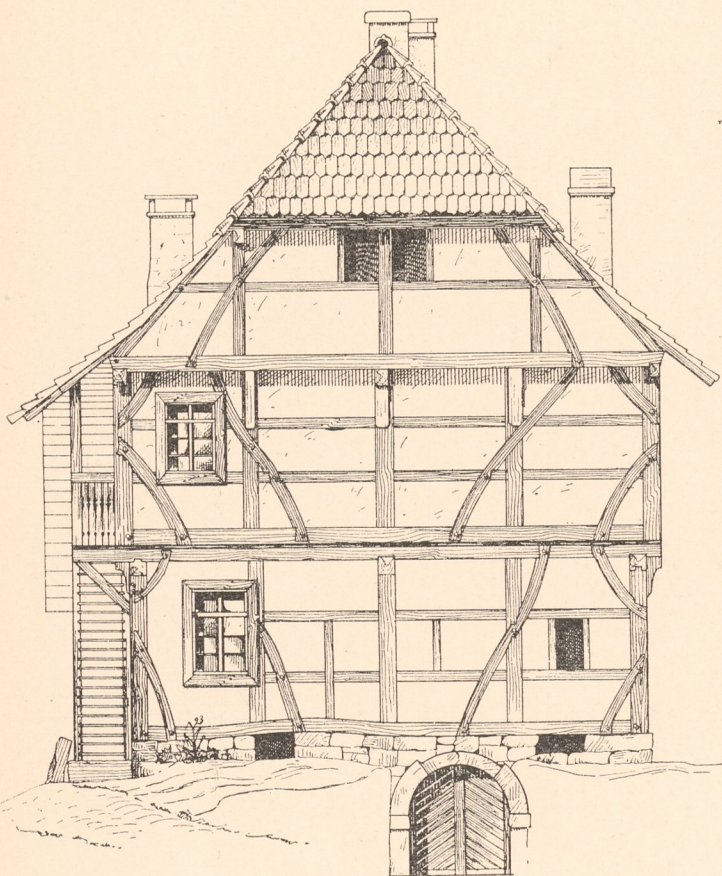
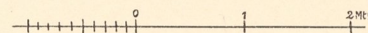


Abb. 5. Kippenheim Nr. 227. Vordergiebel.

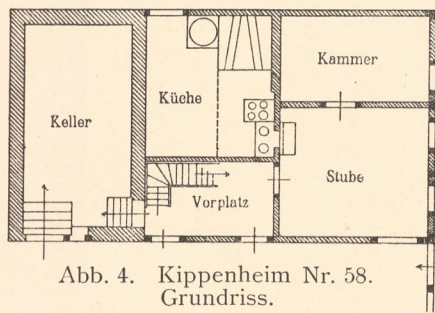


Abb. 4. Kippenheim Nr. 58. Grundriss.

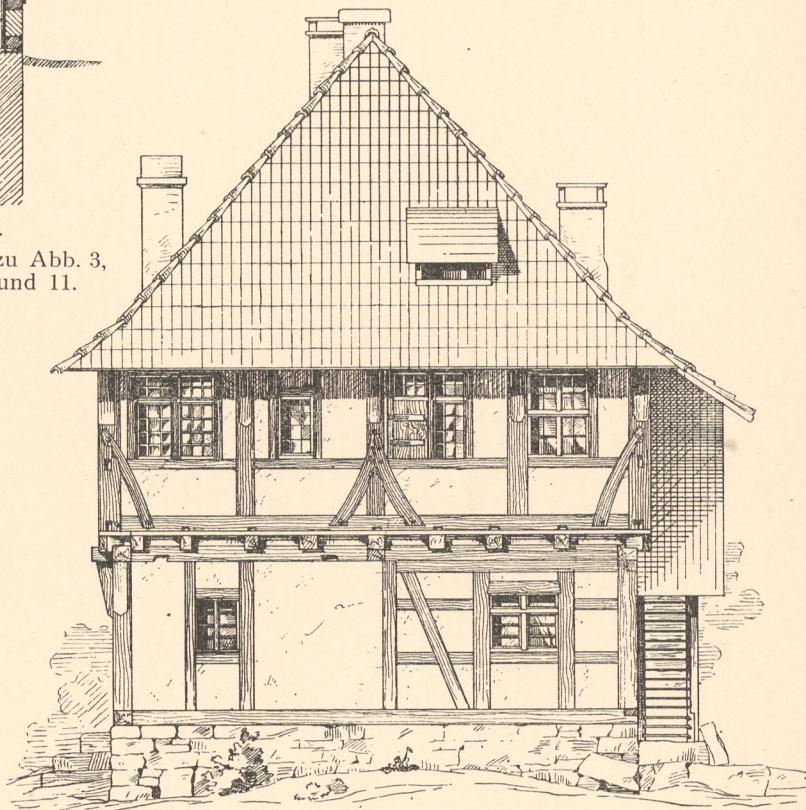
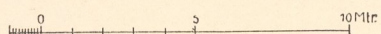


Abb. 6. Kippenheim Nr. 227. Hintergiebel.

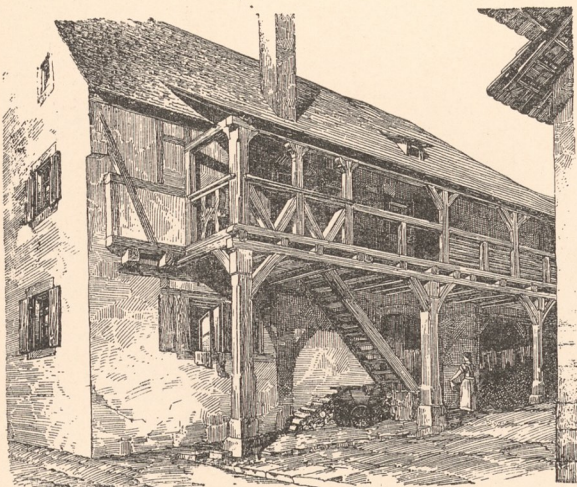


Abb. 7. Aus Istein.

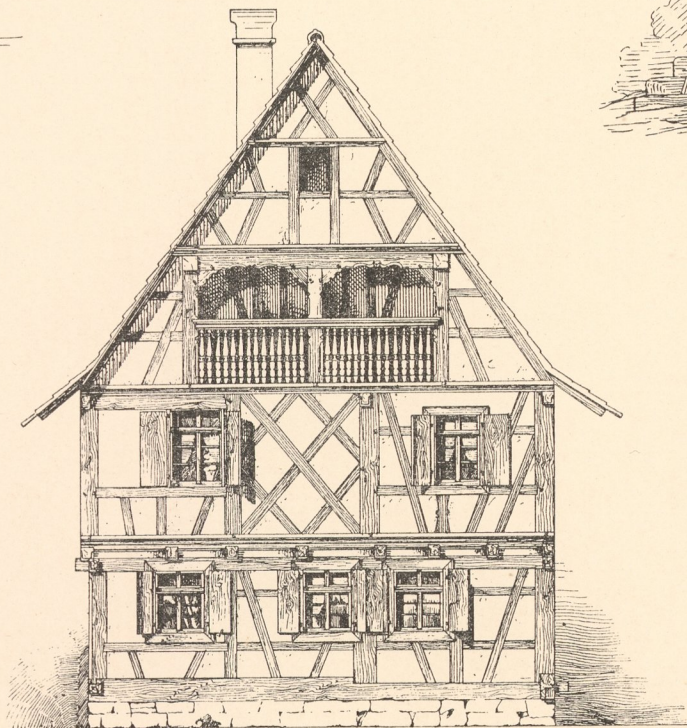


Abb. 8. Kippenheim Nr. 58.

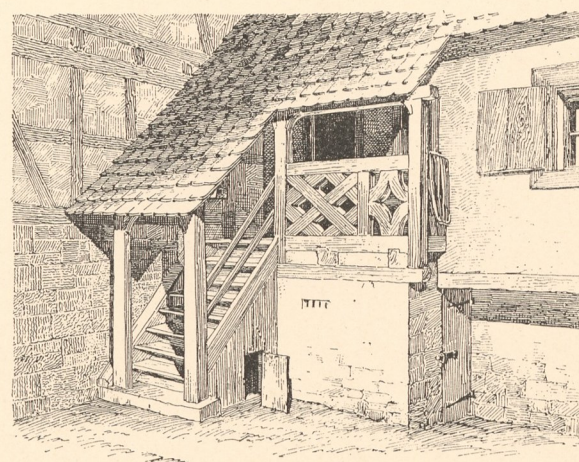


Abb. 9. Aus Istein.

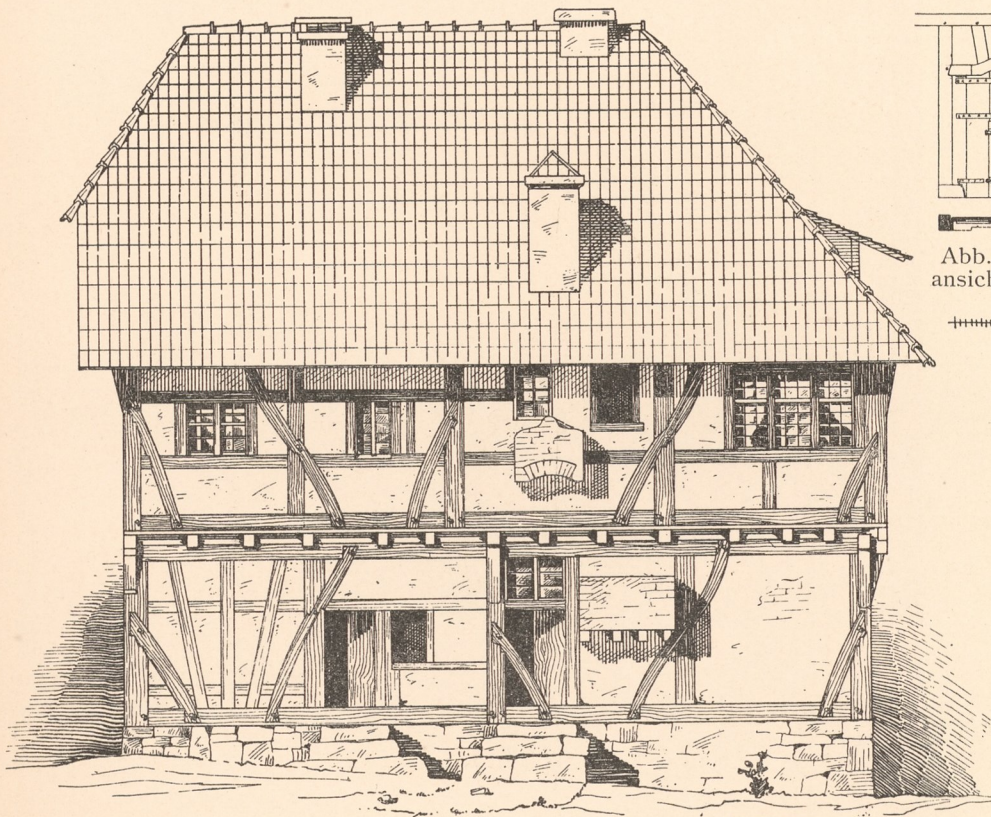


Abb. 11. Kippenheim Nr. 227. Seitenansicht.

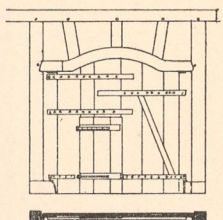


Abb. 10. Innenansicht zu Abb. 2.

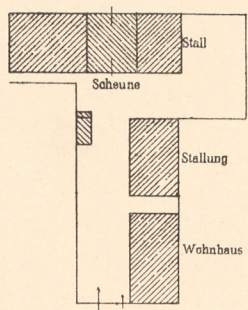
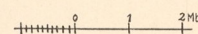


Abb. 12. Kippenheim Nr. 58. Lageplan.

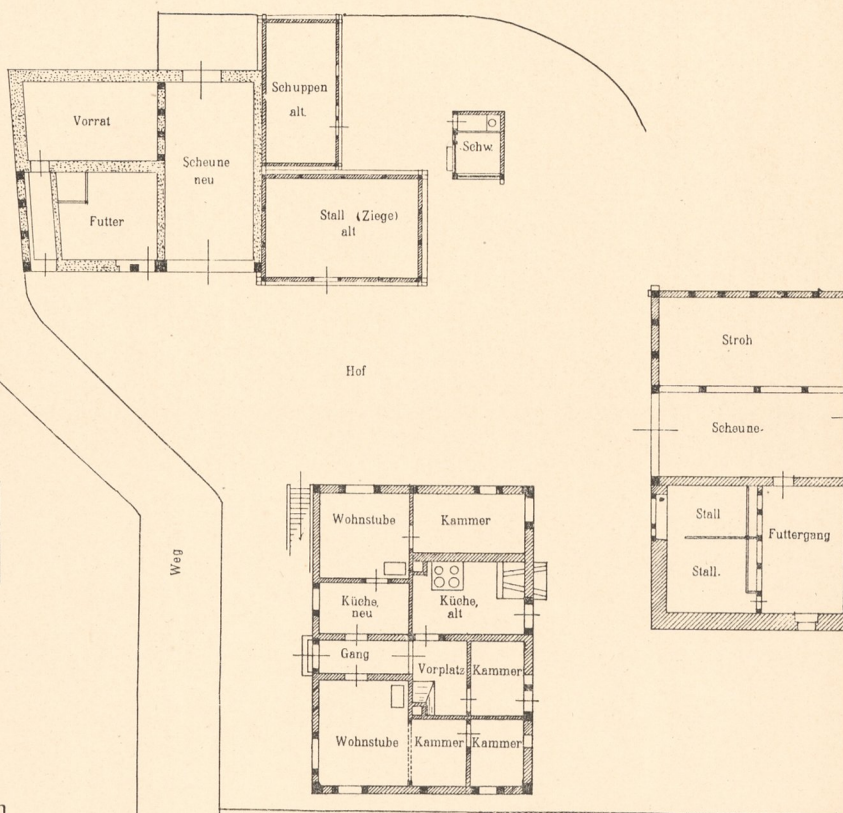


Abb. 13. Kippenheim Nr. 227. Gehöftgrundriss.

