

1. Fränkische Gehöfteformen.

Abb. 1.

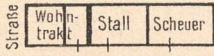


Abb. 2.

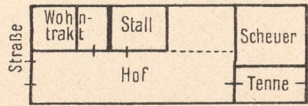


Abb. 3.

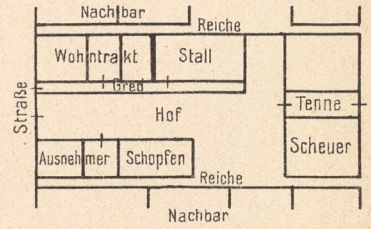


Abb. 4.

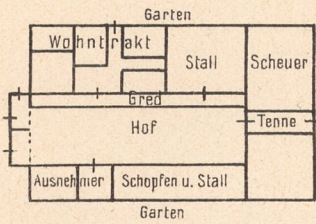


Abb. 5.

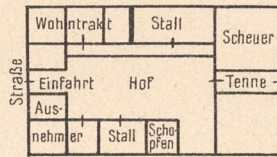


Abb. 6.

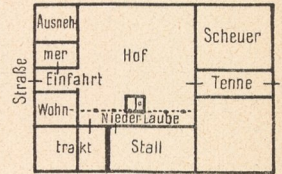


Abb. 8.

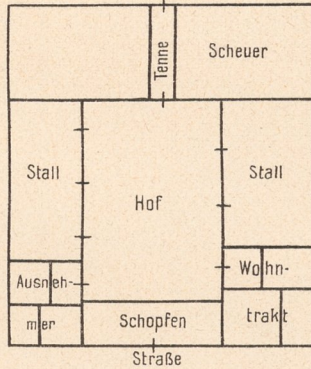


Abb. 9.

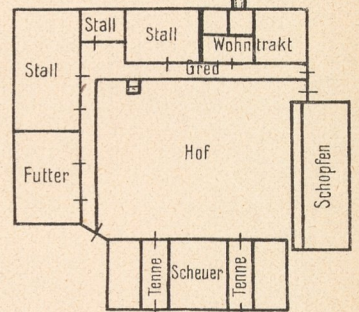


Abb. 7.

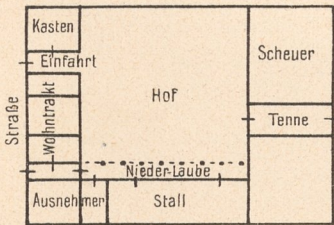


Abb. 11.

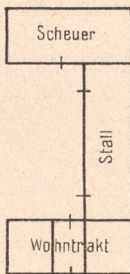
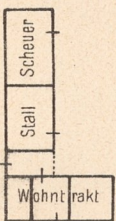


Abb. 10.



Verzeichnis der Abbildungen.

1. Einfachste Form. Streckhof. Allgemein.
2. Hakenhof. Allgemein.
3. Dreiseithof. Im Straßendorf. Allgemein.
4. Waldhufen-Hof.
5. Neuere Form von 3. Besonders Niederösterreich.
6. Neuere Form in Dörfern. Niederösterreich.
7. Neuere Form in Dörfern. Niederösterreich.
8. Kottingherrmanns, nordöstl. Niederösterreich.
9. Egerland. (S. Tafel Böhmen Nr. 10.)
10. Steiermark. Spielfeld—Luttenberg.
11. „ Bei Luttenberg.

Maßstab: 1 : 1000.

