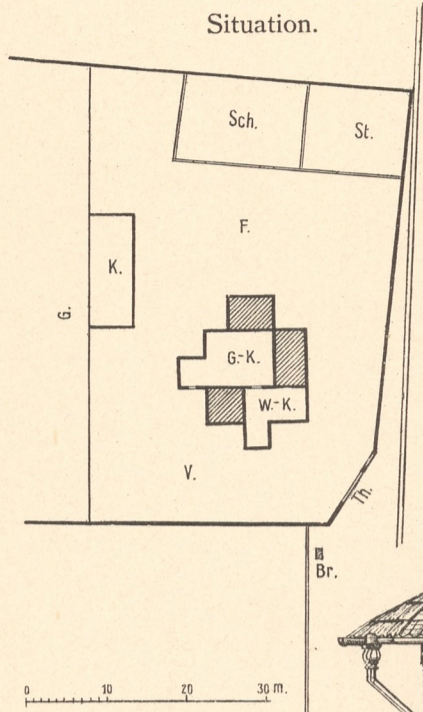
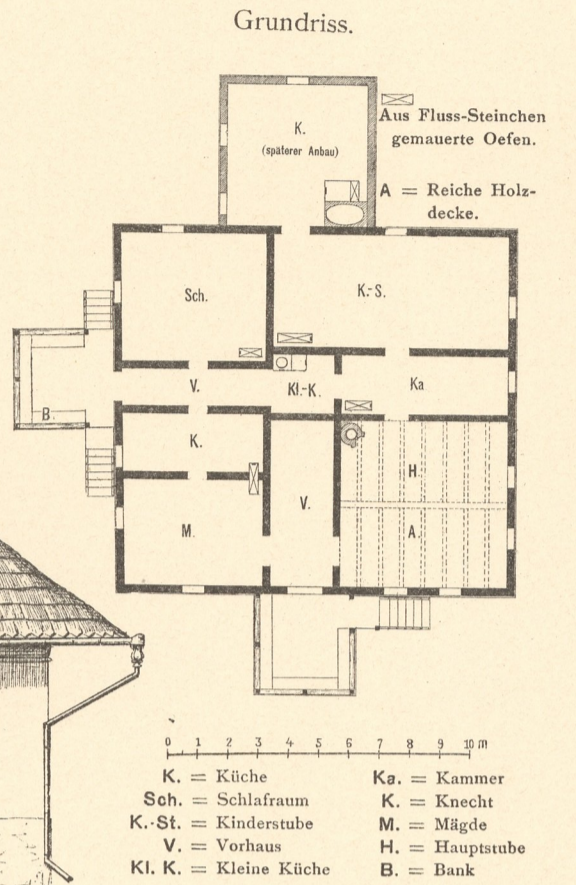
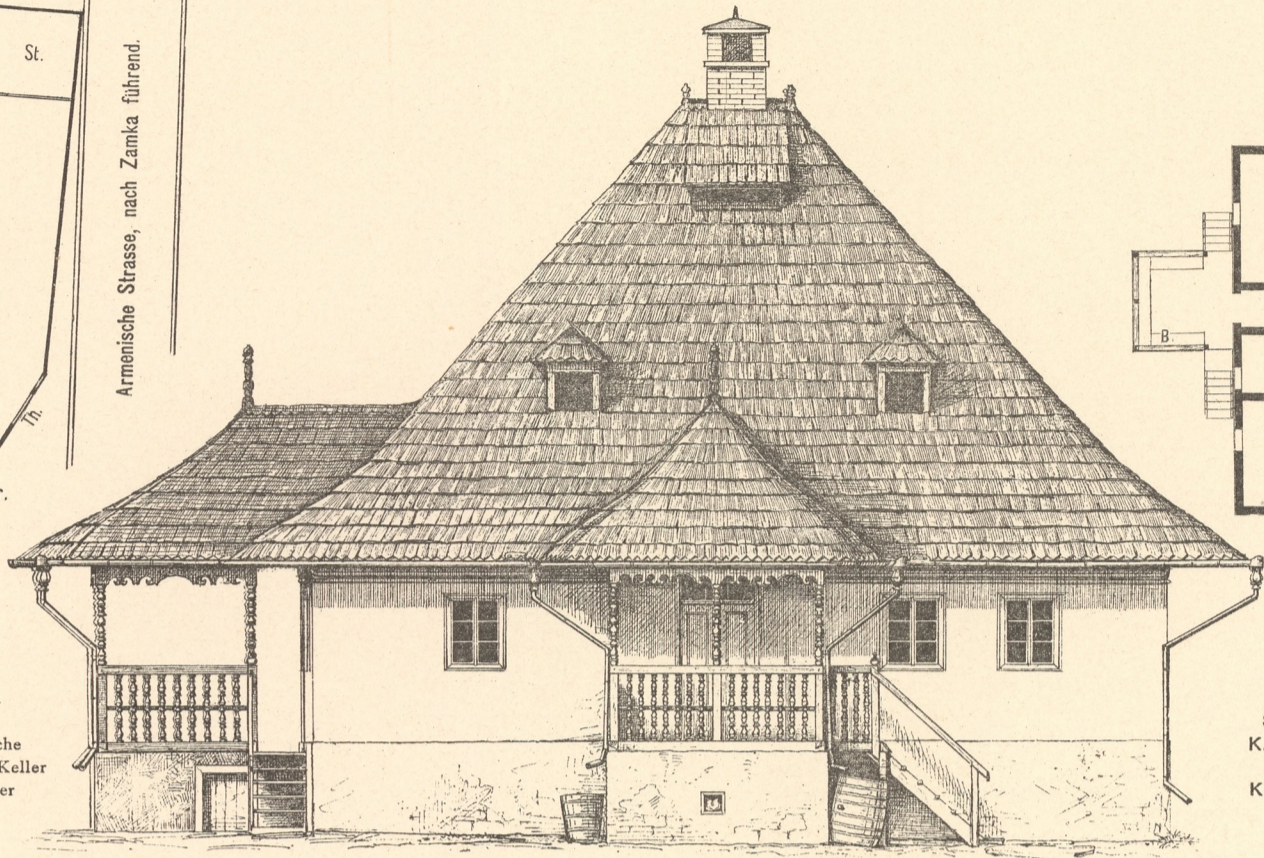




Armenisches Haus Suczawa.



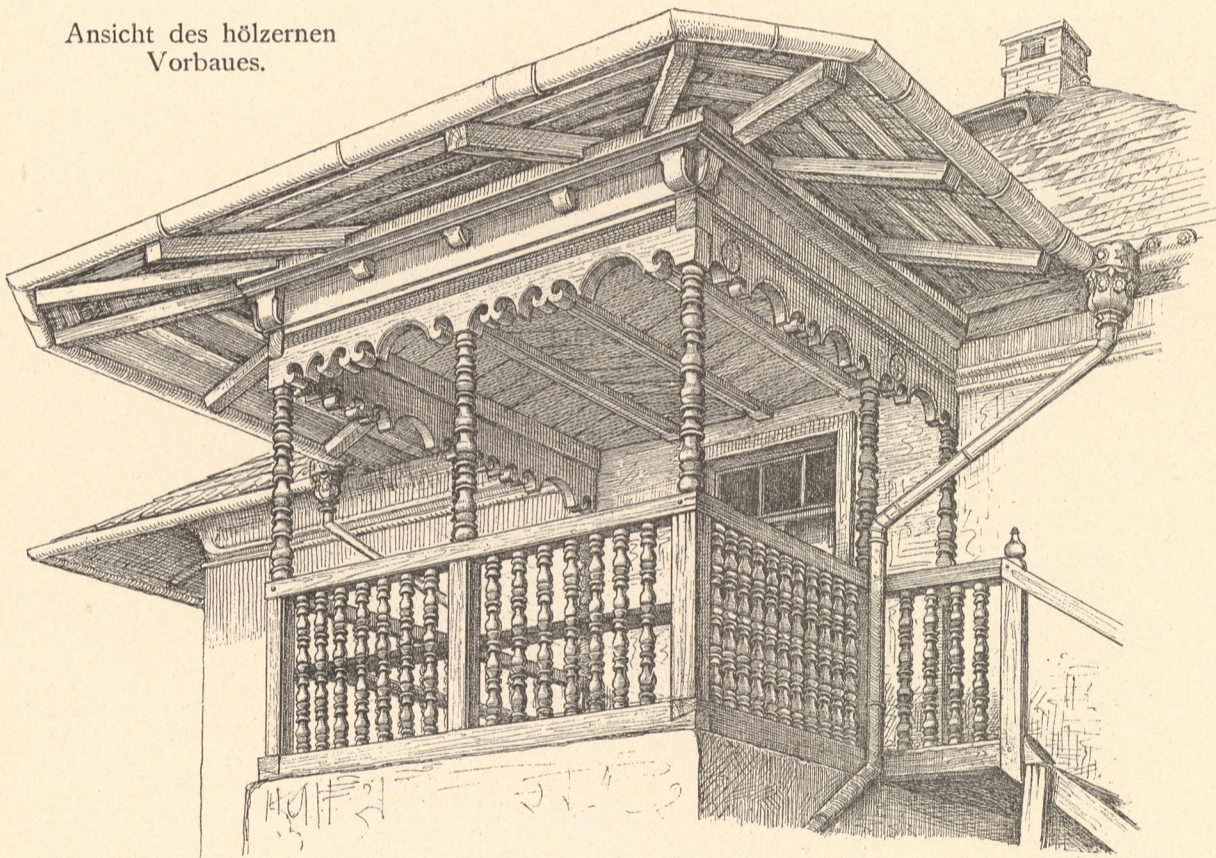
Armenische Strasse, nach Zamka führend.



- H. = Hofraum
- V. = Vorhof
- Th. = Thor
- Br. = Brunnen
- G. = Garten
- Sch. = Schuppen
- St. = Stall
- K. = Alte Küche
- G.-K. = Gemüse-Keller
- W.-K. = Weinkeller

- Ka. = Kammer
- K. = Knecht
- M. = Mägde
- H. = Hauptstube
- Kl. K. = Kleine Küche
- B. = Bank

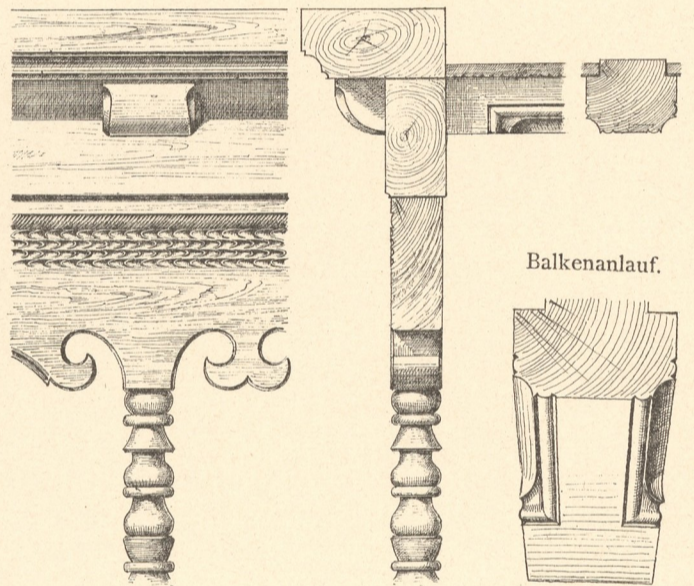
Ansicht des hölzernen Vorbaues.



Detail.

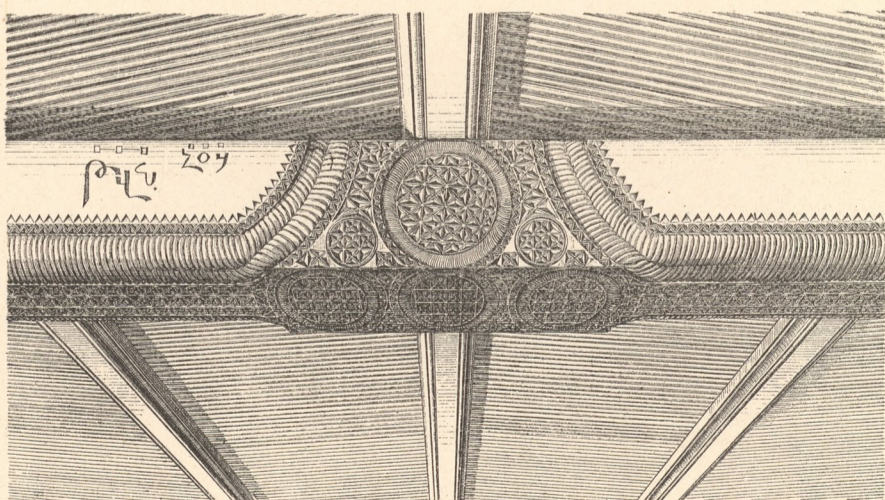
Vorderansicht.

Seitenansicht.

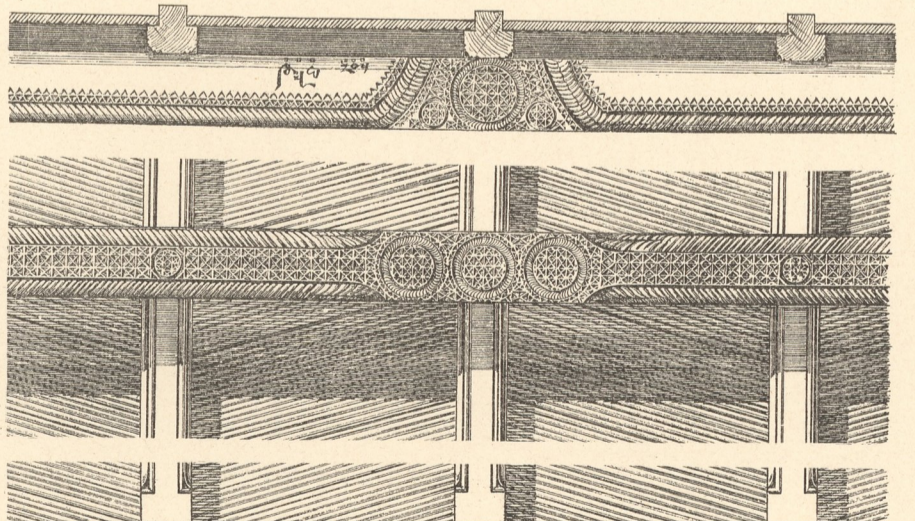


0 10 20 30 40 50 60 70 80 90 1 m.

Detail des Holzplafond.



Detail des Holzplafond.



0 10 20 30 40 50 60 70 80 90 1 m.