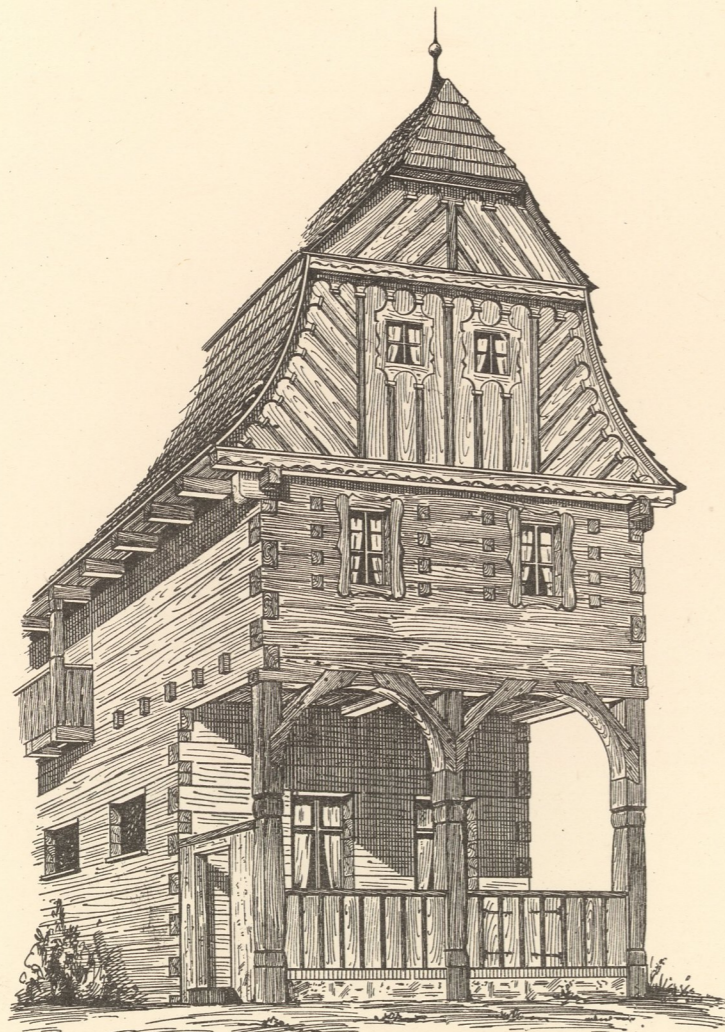
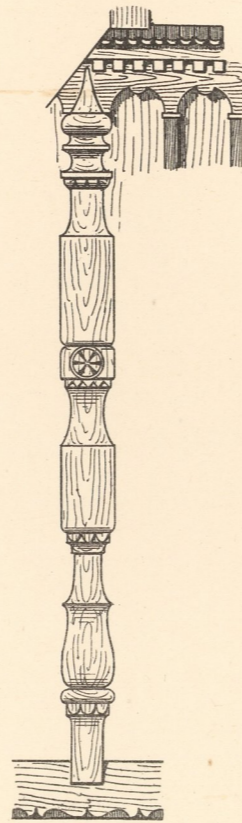




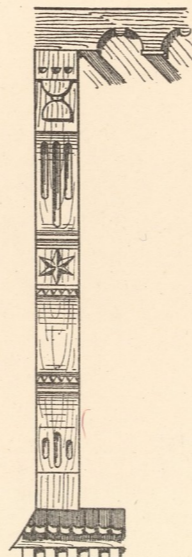
Bauernhäuser aus Eisenbrod, Proschwitz, Freiheit und Marschendorf.



Eisenbrod.

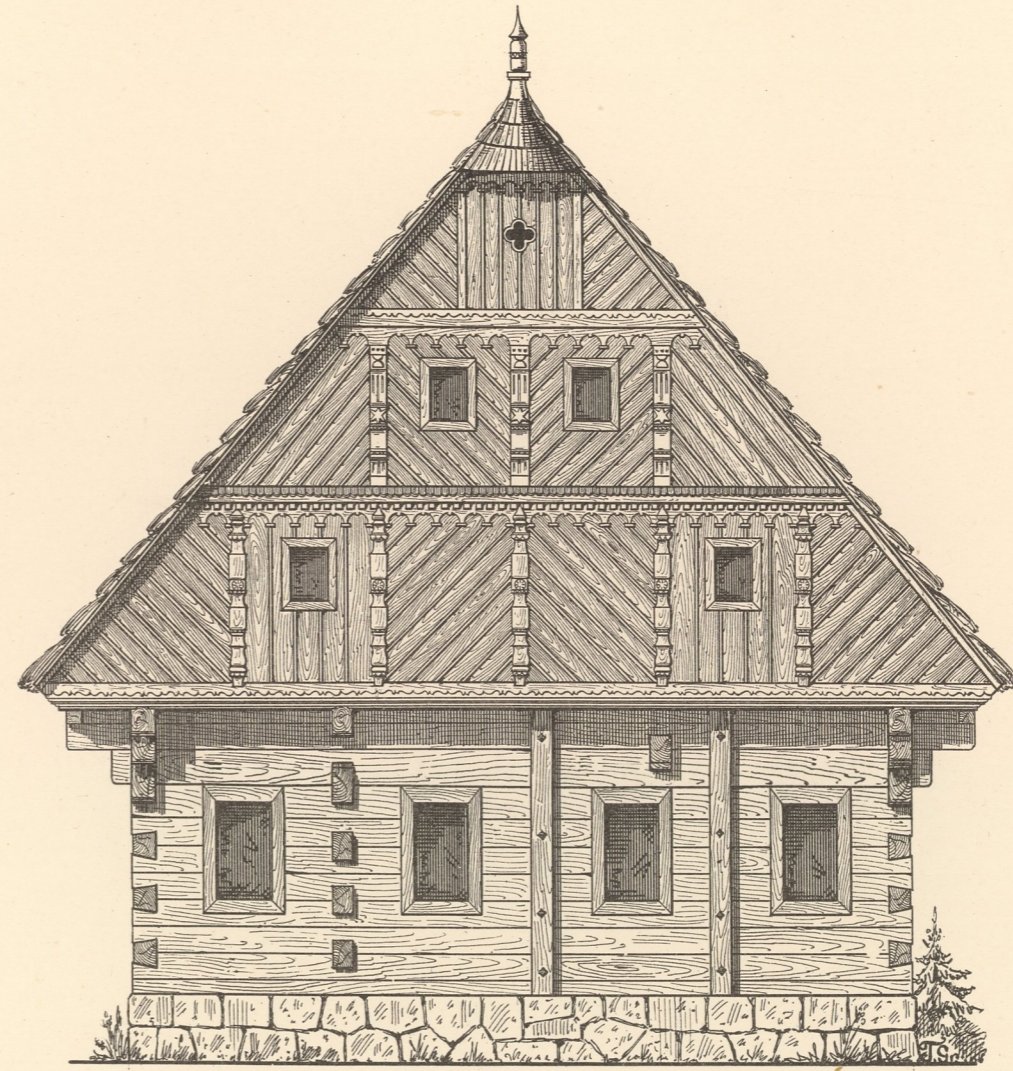


(Giebelständer I. Stockwerk).

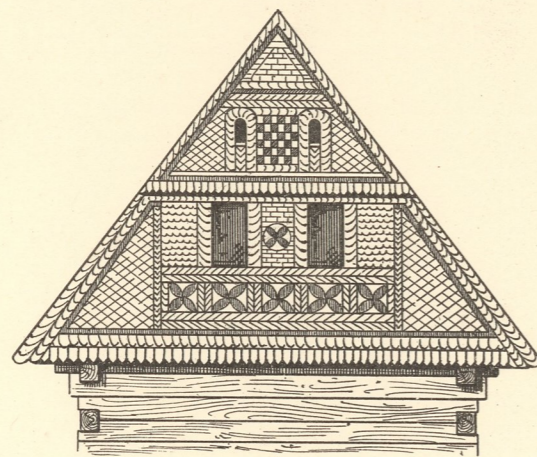


(Giebelständer II. Stockwerk).

Proschwitz.



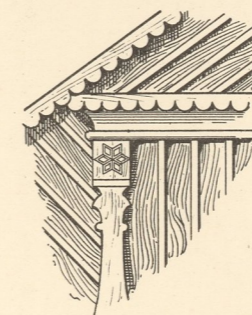
11,37m
Proschwitz.



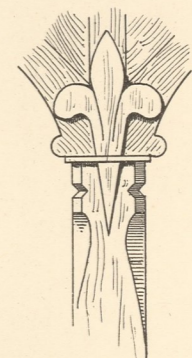
Eisenbrod.
(Beschieferung).



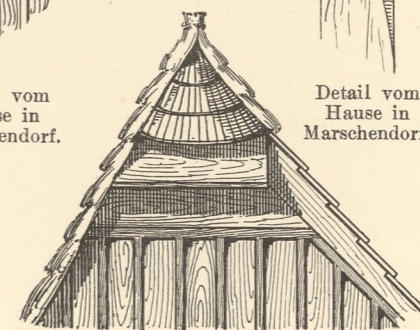
Marschendorf



Detail vom
Hause in
Marschendorf.



Detail vom
Hause in
Marschendorf.



(Giebelendung).
Freiheit.

Aufgenommen von Hans Lutsch in Breslau.