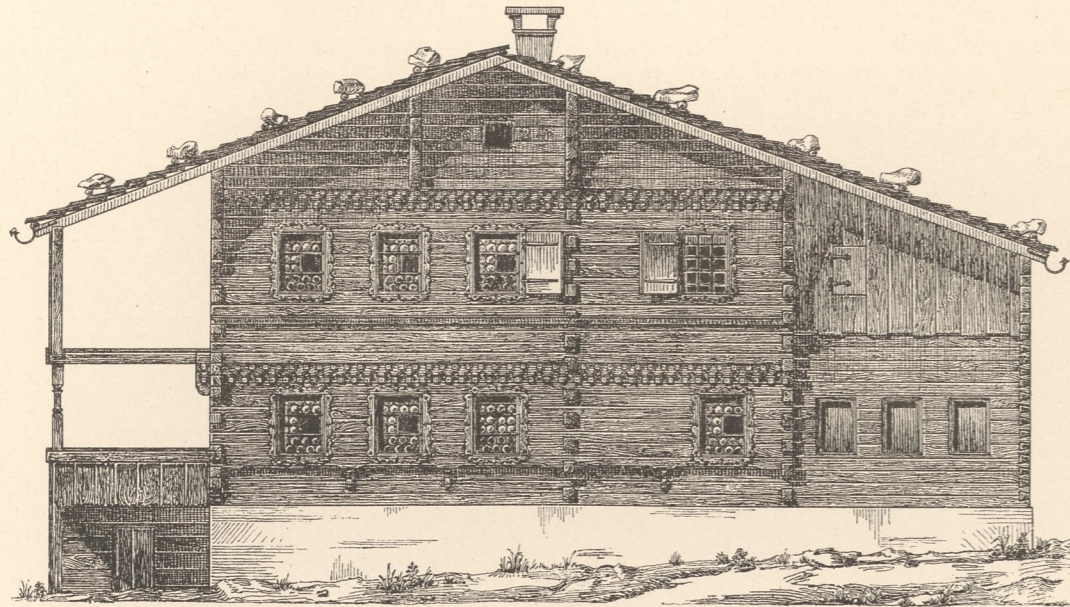




### Bauernhaus zu Bizau in Vorarlberg.

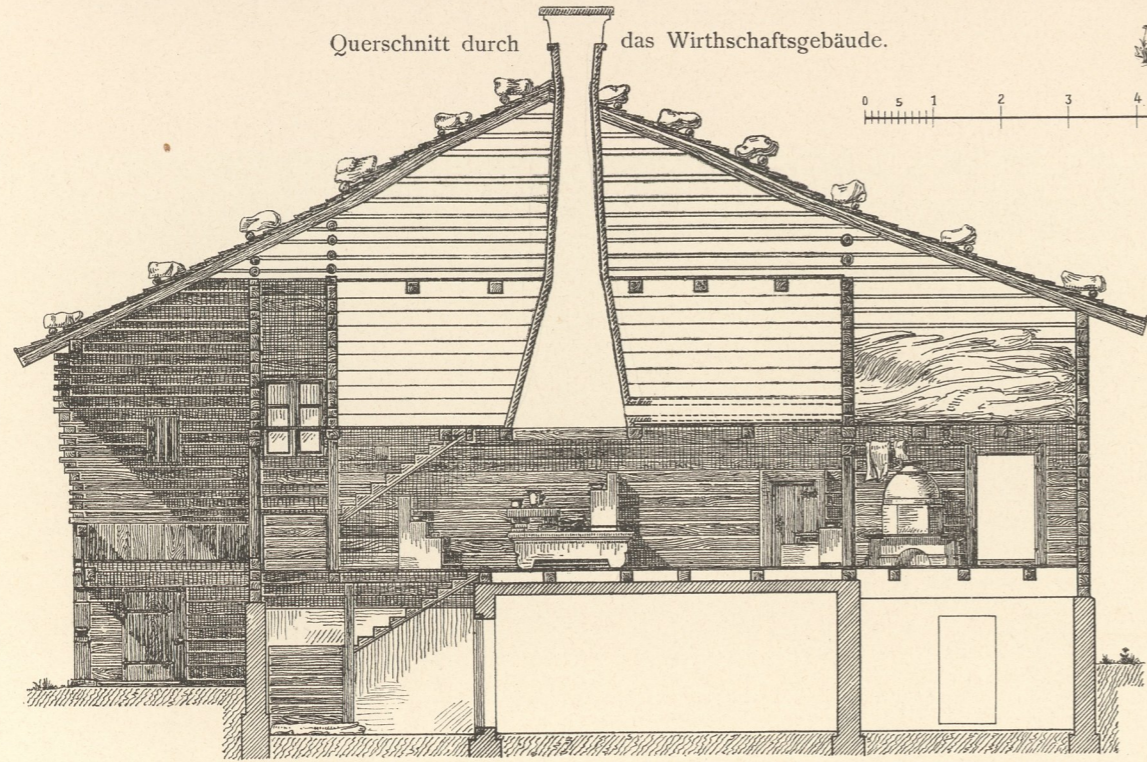
Seitenansicht des Wirtschaftshauses.



Vorderansicht des Wirtschaftshauses.

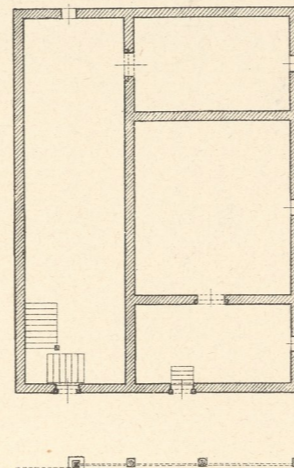


Querschnitt durch das Wirtschaftsgebäude.

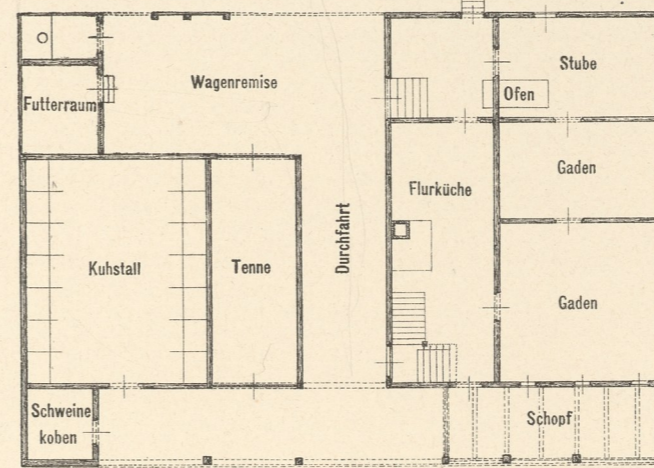


0 5 1 2 3 4 5 6 7 8 9 10 m.

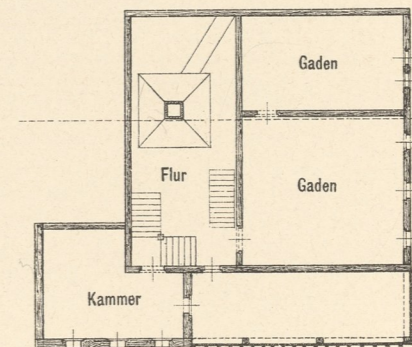
Keller.



Erdgeschoss.

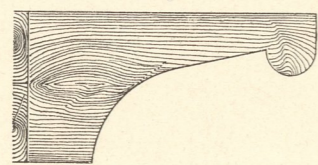


I. Stock.

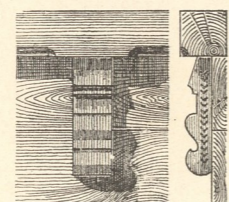


0 1 2 3 4 5 6 7 8 9 10 m.

Dachstütze am Wohnhaus-Zubau (rechts, I. Stock).

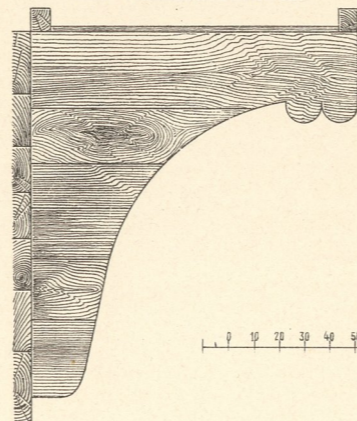


Console unter dem Erdgeschossfenster.

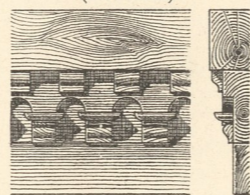


0 10 20 30 40 50 60 70 80 90 1m.

Die vier großen Stützen des Wohnhausdaches.

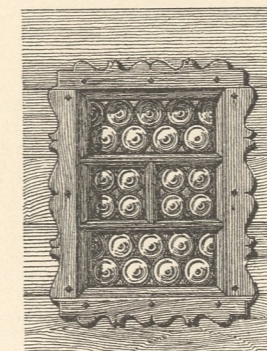
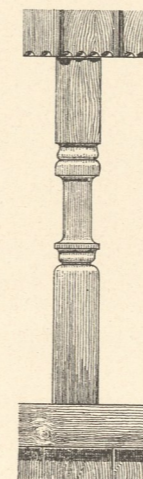


Zierbalken auf dem Wohnhaus (zweimal).



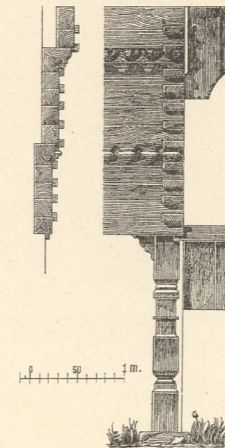
0 10 20 30 40 50 60 70 80 90 1m.

Details vom Wohnhaus und Wirtschaftsgebäude.



0 10 20 30 40 50 60 70 80 90 1m.

Rechte Ecke des Wirtschaftshauses (Mittelbau).



0 10 20 30 40 50 60 70 80 90 1m.