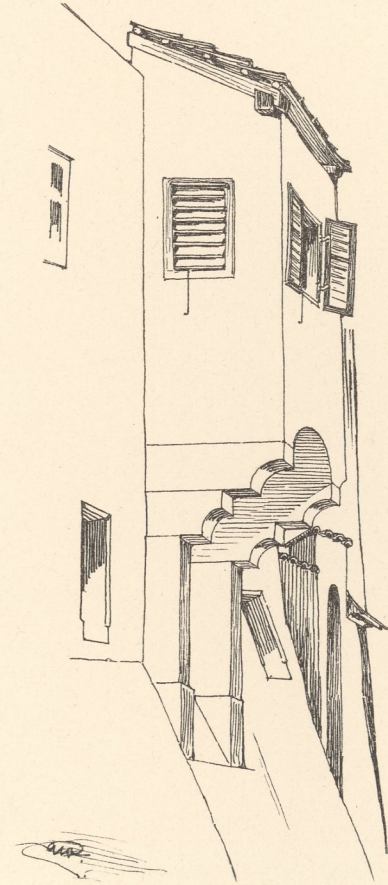


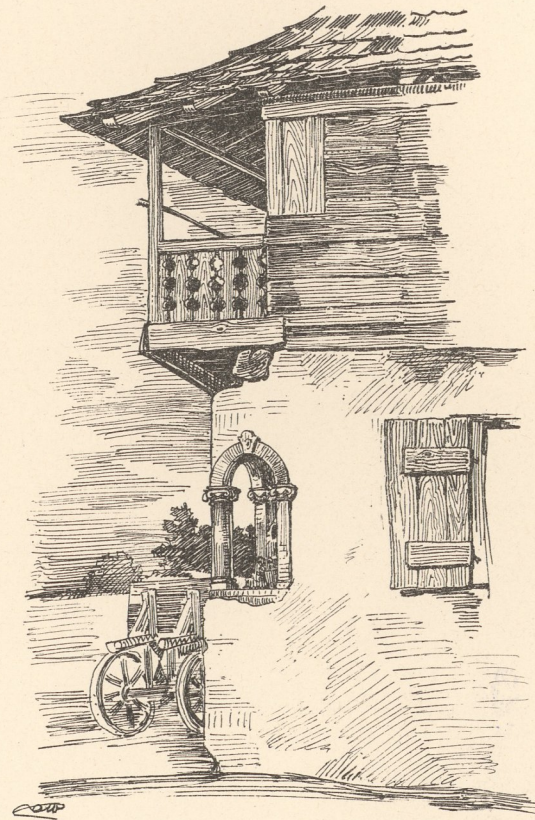


Erker an volksthümlichen Bauten in Tirol.

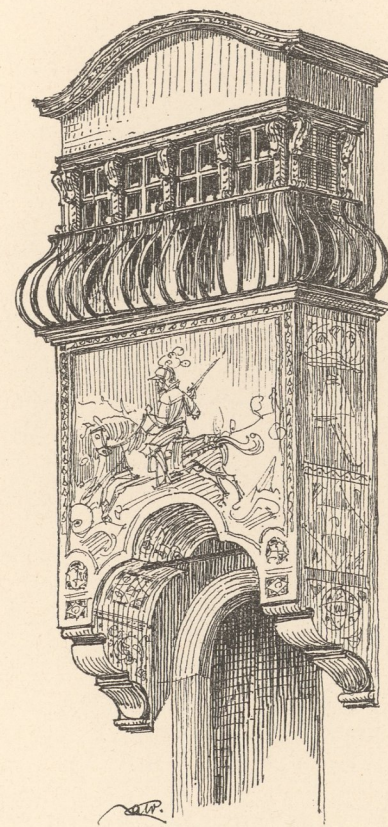
Erker in St. Pauls bei Bozen.



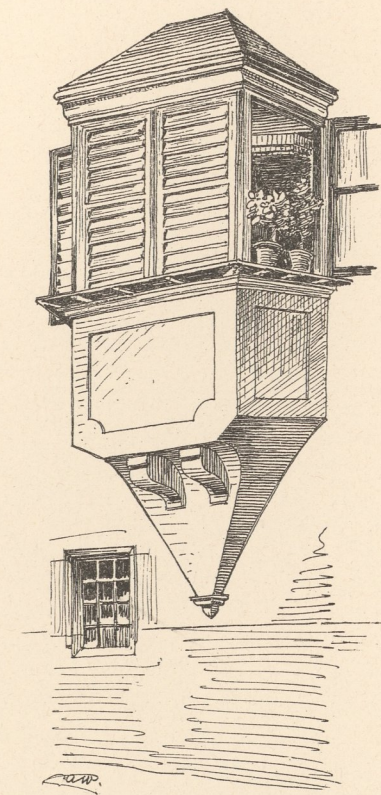
Cles in Süd-Tirol.



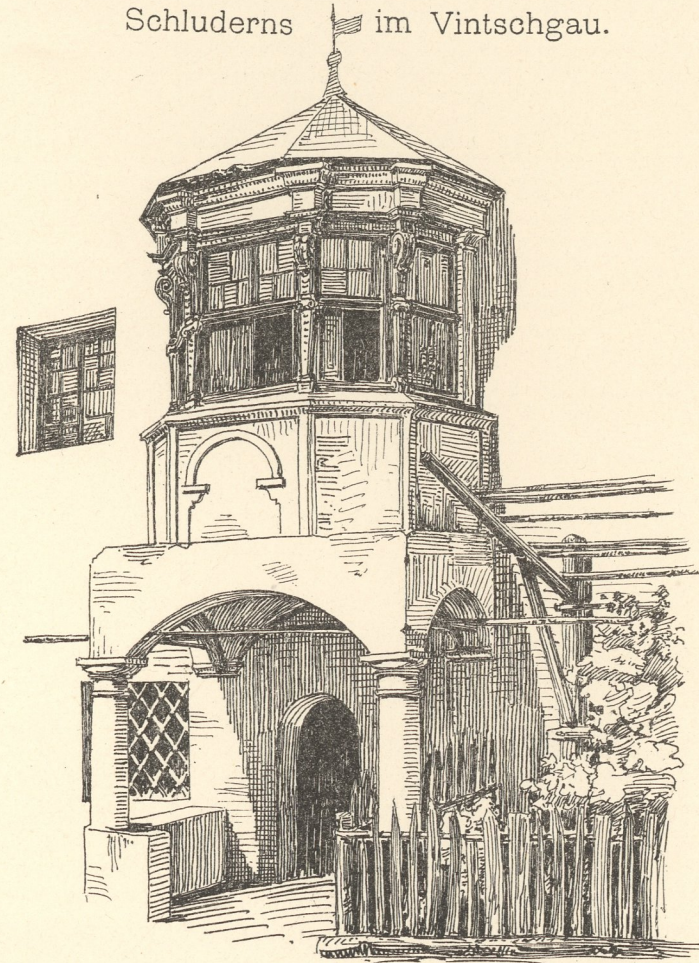
Erker in Nassereith.



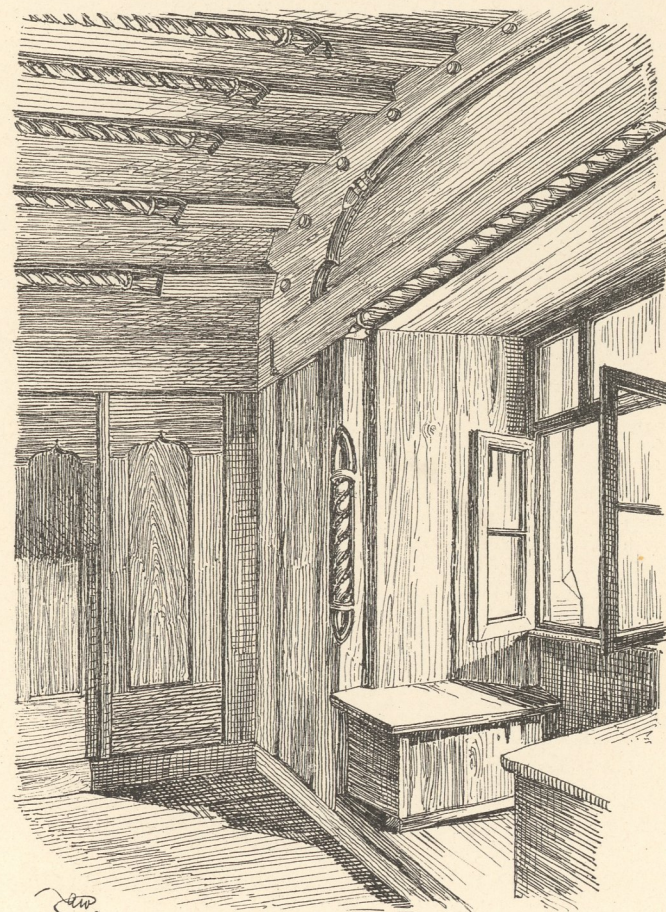
Erker in St. Pauls bei Bozen.



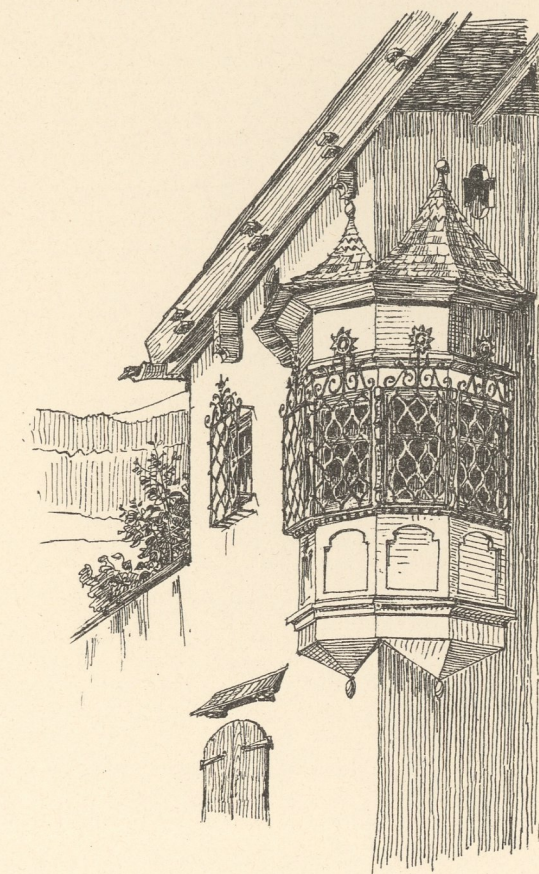
Schluderns im Vintschgau.



Aus dem Schulhause auf Moos-Eppan



Erker in Eppan.



Aufgenommen von Architekt A. Weber.