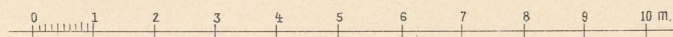
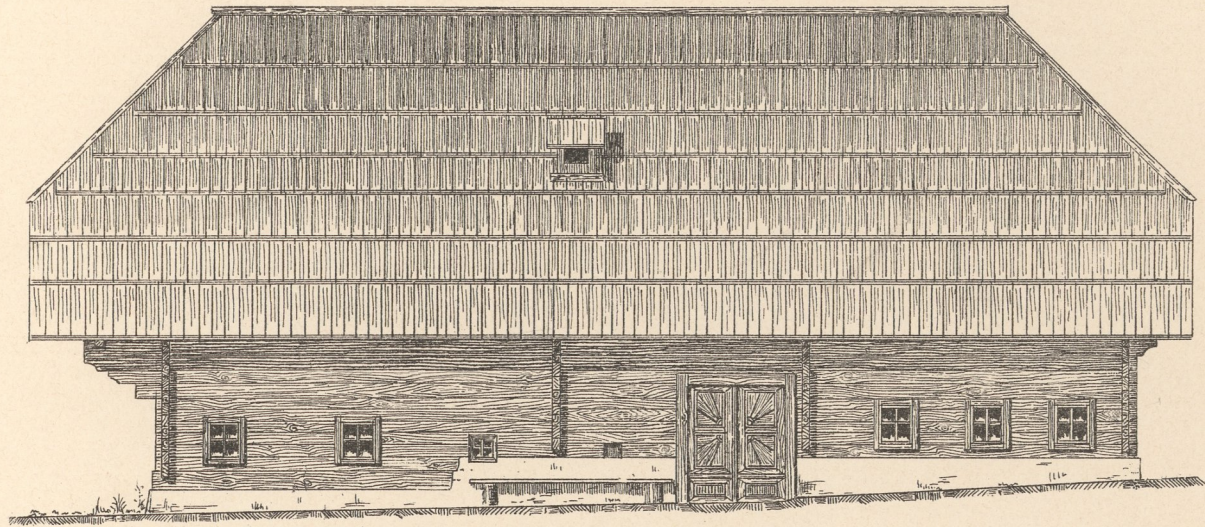


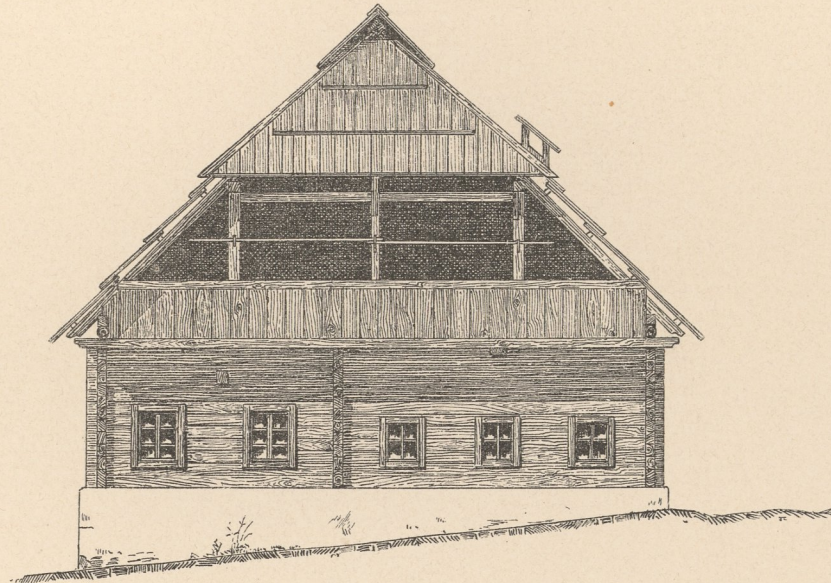


Das Sank-Haus, H.-Nr. 4 in Gritschach, Gemeinde Seeboden am Millstätter-See.

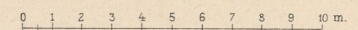
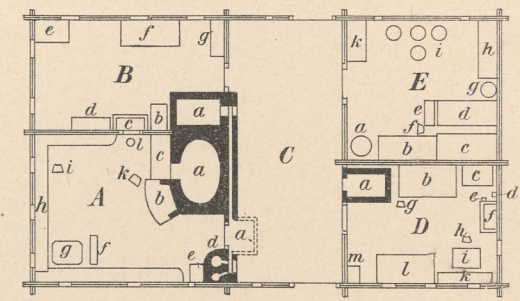
Hauptansicht.



Giebelseite.



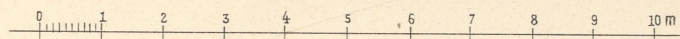
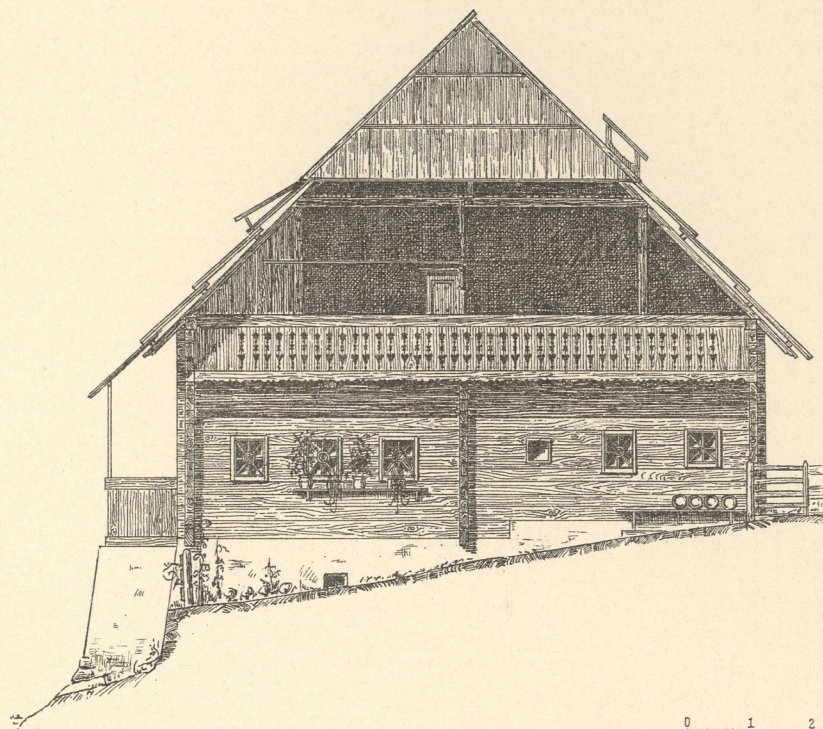
Erdgeschoss



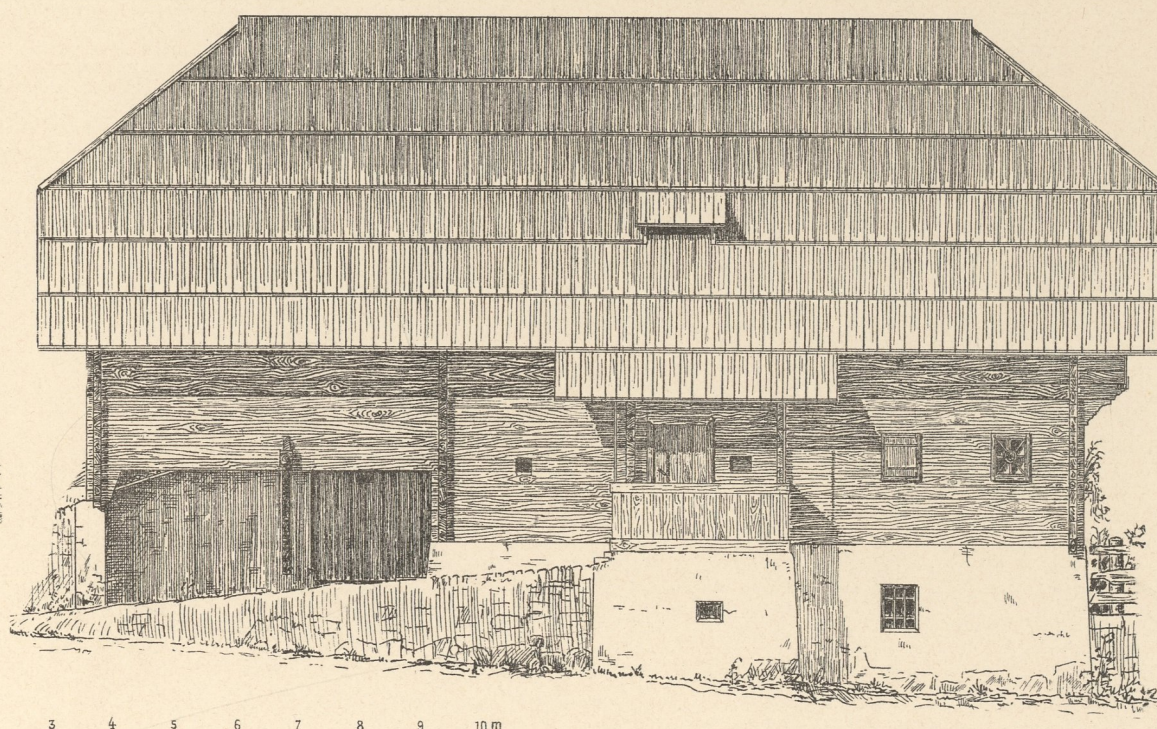
- A = Rauchstube.**
a = Backofen
b = offener Herd
c = Ofenbank
d = Secht- und Brennkessel
e = Sockel für das Kühlfassel
f = Bank (=Stuhle)
g = Tisch
h = Bank
i, k = Sessel
l = Hackstock.
- B = Kachelstube.**
a = Ofen
b = Koffer
- C = Commode**
d = Kasten
e = Tisch
f = Bett
g = Küchenkasten.
- C = Laube.**
a = Rauchfang.
- D = Stübel.**
a = Ofen
b = Bett
c = Kasten
d = Uhr
e = Spucknapf
f = Commode mit Glaskästchen
- g, h = Sessel**
i = Tisch
k = Bank
l = Bett
m = Nähmaschine.
- E = Kammer.**
a = Bottich
b, c, d = Betten
e = Stuhl
f = Sessel
g = Beizfass
h, k = Truhen
i = Fässer.

Rumpler-Keusche, Haus Nr. 7 in Kraut, Gemeinde Seeboden am Millstätter-See.

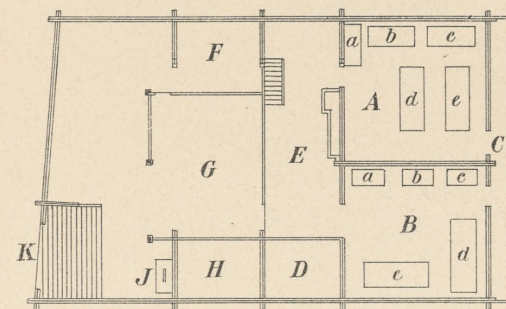
Giebelseite.



Hauptansicht.



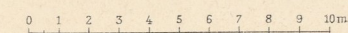
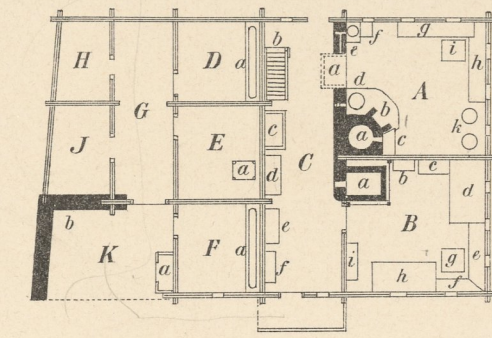
Dachgeschoss.



Dachgeschoss.

- A = Rauchstubenboden.**
a, b, c, d, e = Truhen.
- B = Kachelstubenboden.**
a, b, c = Kästen
d = Schüttkasten
e = Mehltruhe.
- C = Gang.**
- D = Kammer.**
- E = „Obenauff“.**
- F = Strohbarren.**
- G = Tenne.**
- H = Futterbarren.**
- J = Futterwurf.**
- K = Tennbrücke.**

Erdgeschoss.



Erdgeschoss.

- A = Rauchstube.**
a = Backofen
b = offener Herd
c = Ofenbank
d = Saufutterkessel
e = Brennkessel
f = Sockel für das Kühlfassel
g, h = Bänke
i = Tisch
k = Beizzuber.
- B = Kachelstube.**
a = Ofen
b = Truhe
c = Kasten
d = Bett
e, f = Bänke
g = Tisch
h = Bett
i = Kasten
- C = Laube.**
a = Rauchfang
b = Bodenstiege.
- c = 2 Truhen übereinanderstehend**
d = Küchenkasten
e = Truhe
f = Wasserbank.
- D = Ochsenstall**
a = Barren.
- E = Jungviehstall.**
a = Barren.
- F = Kuhstall.**
a = Barren.
- G = „Hof“.**
- H = Schafstall.**
- J = Schweinestall.**
- K = Vorhof.**
a = Futterwurf.
b = Düngerstätte.

Aufgenommen von J. R. Bünker.