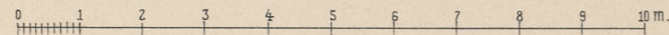
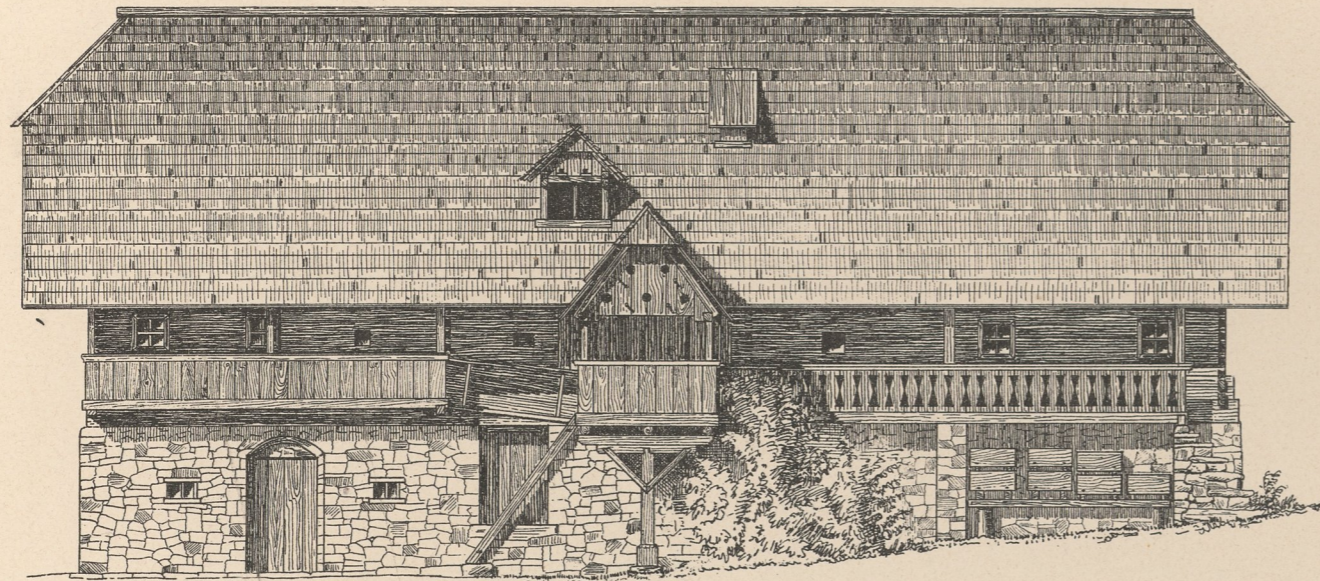


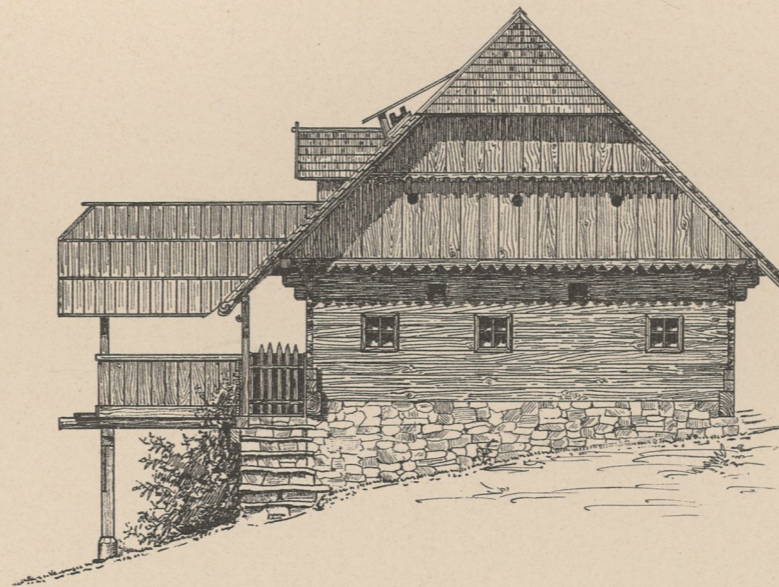


Das Hübler-Haus, Nr. 48 in Kemetberg bei Köflach.

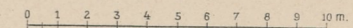
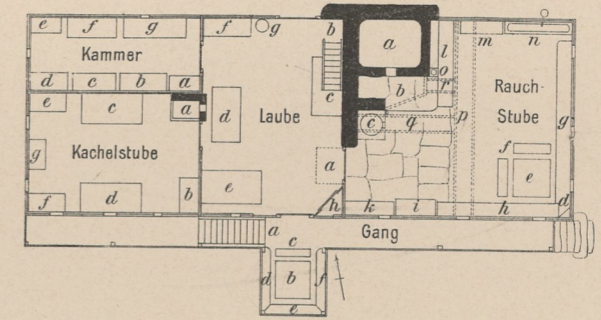
Hauptfront.



Vordere Giebelseite.



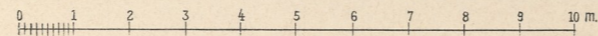
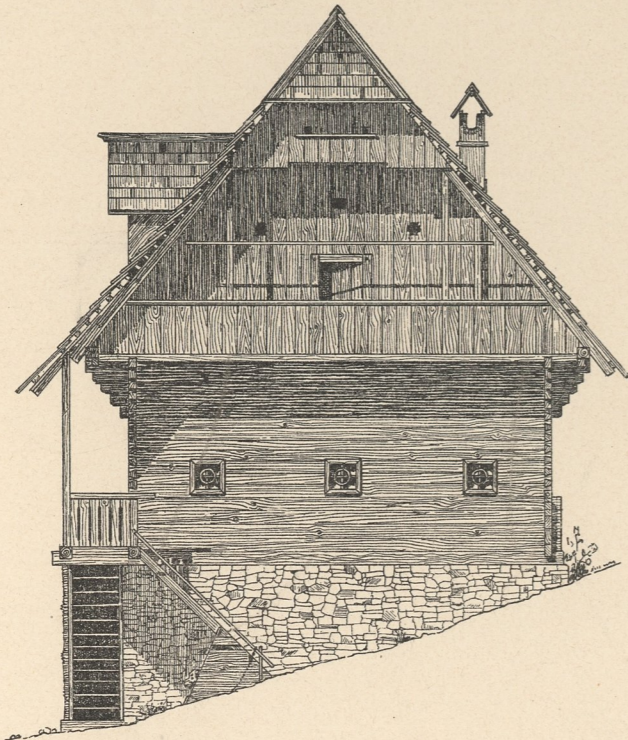
Grundriss.



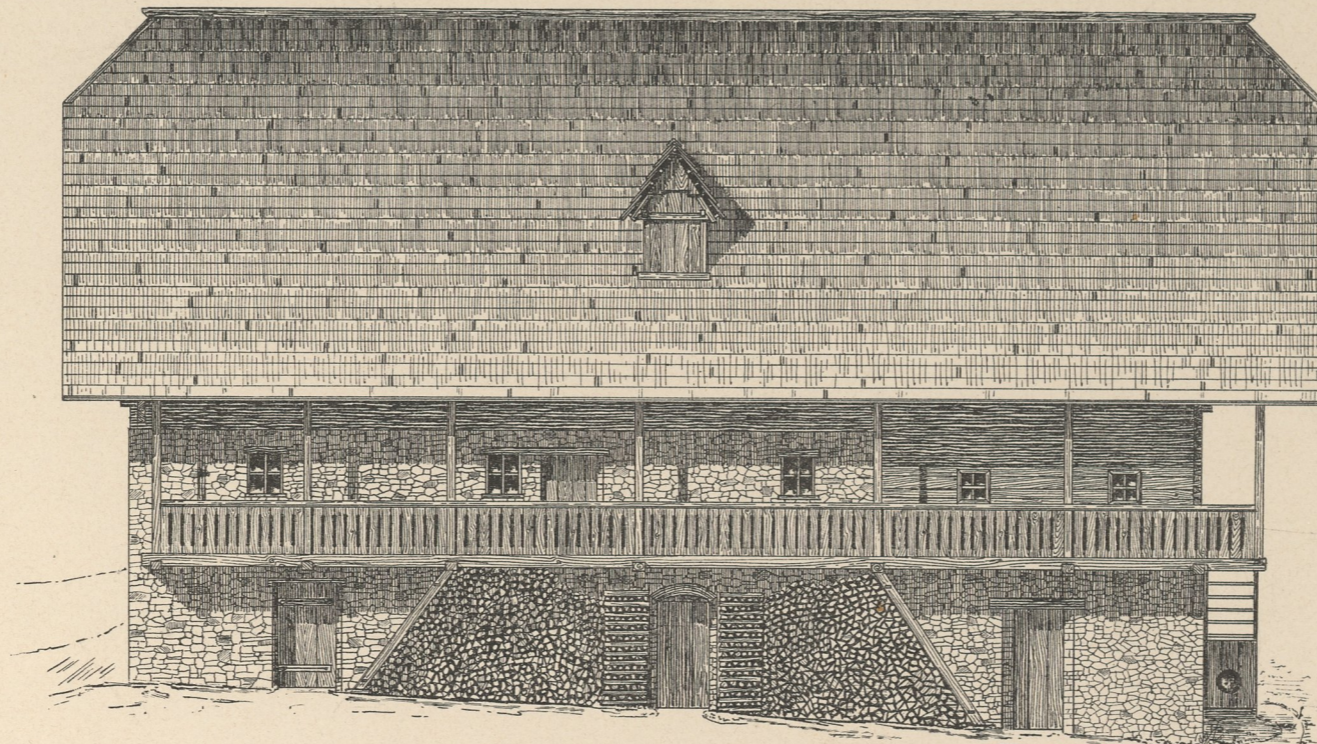
- In der Rauchstube.
 - a = Backofen
 - b = Offener Herd
 - c = Saufutterkessel
 - d = Eckkastel
 - e = Tisch
 - f = Stühle
 - g, h = Bänke
 - i = Mehltruhe
 - k = Wasserbank
 - l = Hühnersteige
 - m = Milchkasten
 - n = Brunnentrog
 - o = Salzstock
- über p, q = Holzassen
- r = Spandl'n
- In der Laube.
 - a = Rauchfang
 - b = Bodenstiege
 - c, d, e = Betten
 - f = Truhe
 - g = Hackstock.
- In der Kachelstube.
 - a = Ofen
 - b, e, f = Commoden
 - c, d = Betten
 - g = Kasten.
 - c, d = Betten
 - g = Kasten.
- In der Kammer.
 - a, e = Kästen
 - b, c, f, g = Truhen
 - d = Commode.
- Im Gang.
 - a = Stiege, die an den Ställen hinabführt
 - b = Tisch
 - c = Stuhl
 - d, e, f = Bänke.
 - c = Stuhl
 - d, e, f = Bänke.
- o = Salzstock

Das Jud-Haus, Nr. 46 in Kemetberg bei Köflach.

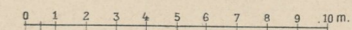
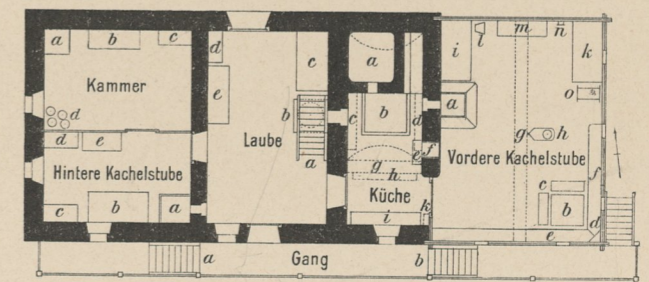
Vordere Giebelseite.



Hauptfront.



Grundriss.



- In der vorderen Kachelstube.
 - a = Ofen
 - b = Tisch
 - c = Stühle
 - d = Altar
 - e, f = Bänke
 - g = Unterzugbalken
 - h = Trendle
 - i, k = Betten
 - l = Sessel
 - m = Milchkasten
 - n = Uhr
 - o = Wiege.
- In der Küche.
 - a = Backofen
 - b = offener Herd
- über c, d = Schlüsselstöll'n
- e = Wasserbank
- f = Nische, durch die die Speisen erreicht werden
- g = gemauerter Bogen
- über h = Hefstöll'n
- i = Bank
- über k = Pfannenrem
- In der Laube.
 - a = Bodenstiege
 - b = Saufutterkessel
 - c = Bett
 - d = Kasten
 - e = Truhe.
- In der hinteren Kachelstube
 - a = Ofen
 - b = Bett
 - c, d = Commoden
 - e = Truhe.
- In der Kammer.
 - a = Tisch
 - b = Mehltruhe
 - c = Kasten
 - d = Schmalzdosen.
- Im Gang.
 - a, b = Stiegen, die zu den Ställen hinabführen.

Aufgenommen von J. R. Bünker.