

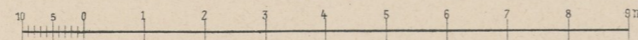
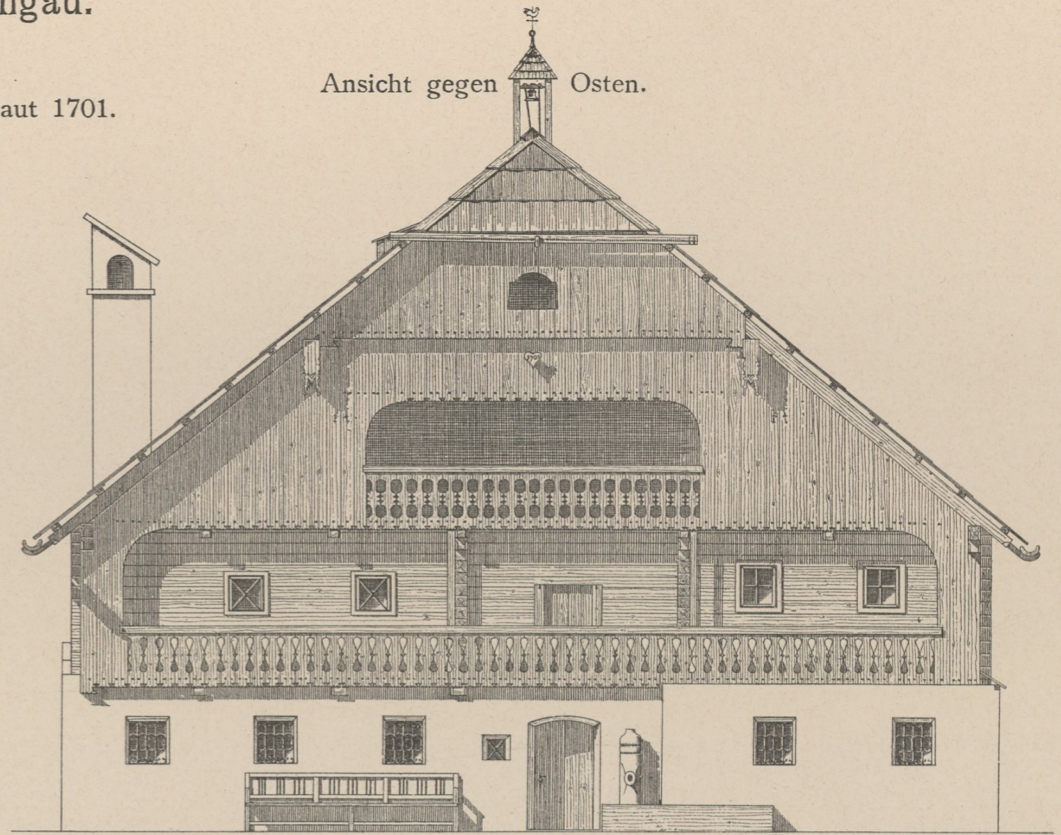
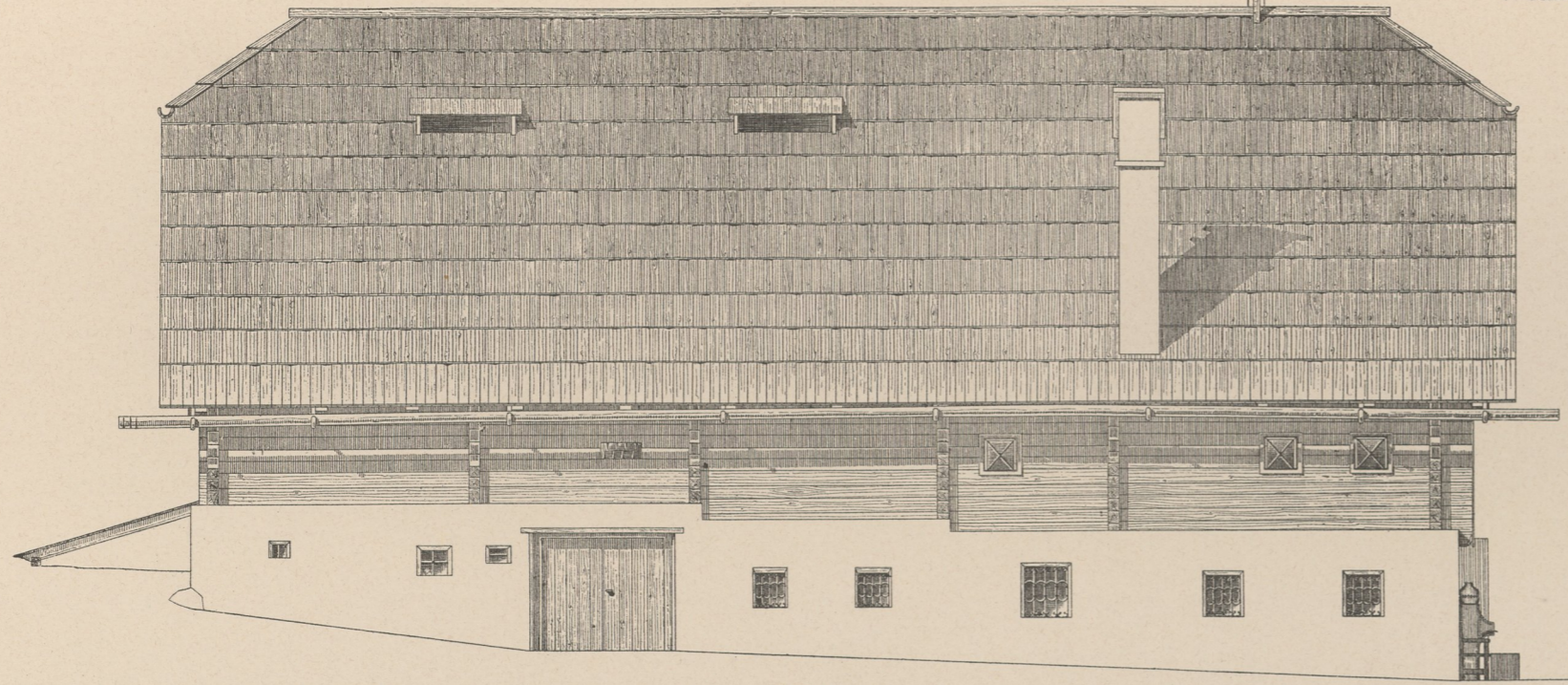


Ernstgut in Fanning, Bezirk Tamsweg im Lungau.

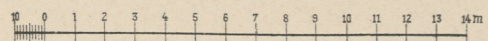
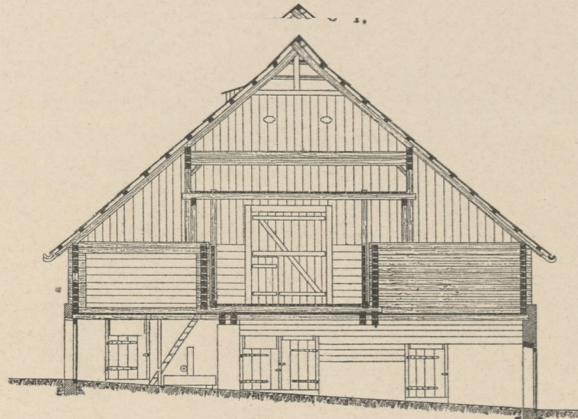
Ansicht gegen Süden.

Wohnhaus, erbaut 1701.

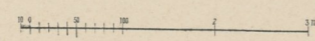
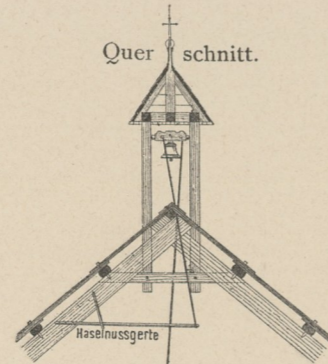
Ansicht gegen Osten.



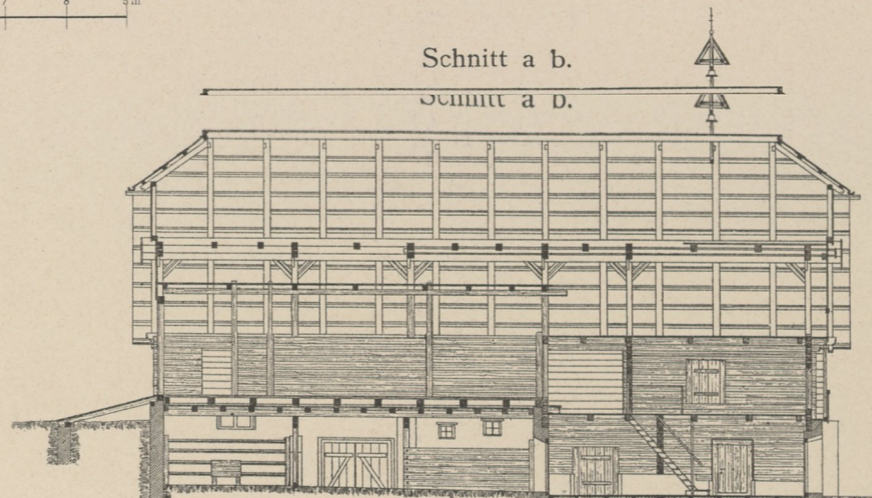
Schnitt e f.



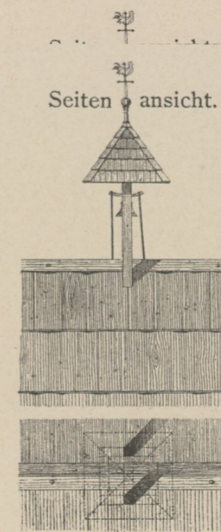
Glockentürmchen
Glockentürmchen



Schnitt a b.
Schnitt a d.

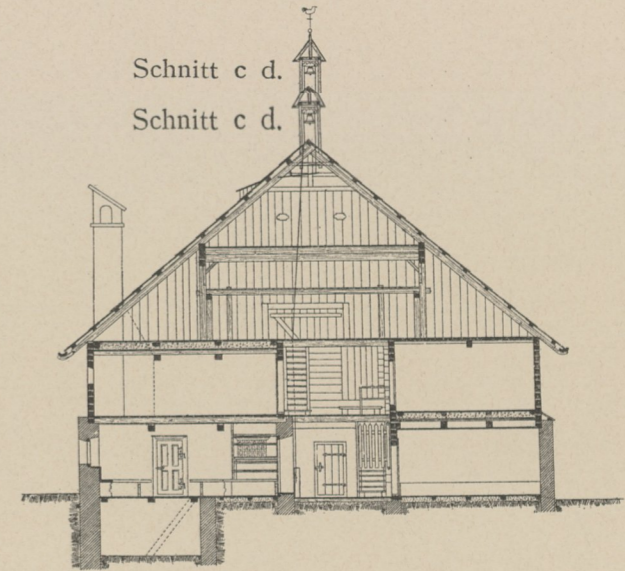


Glockentürmchen

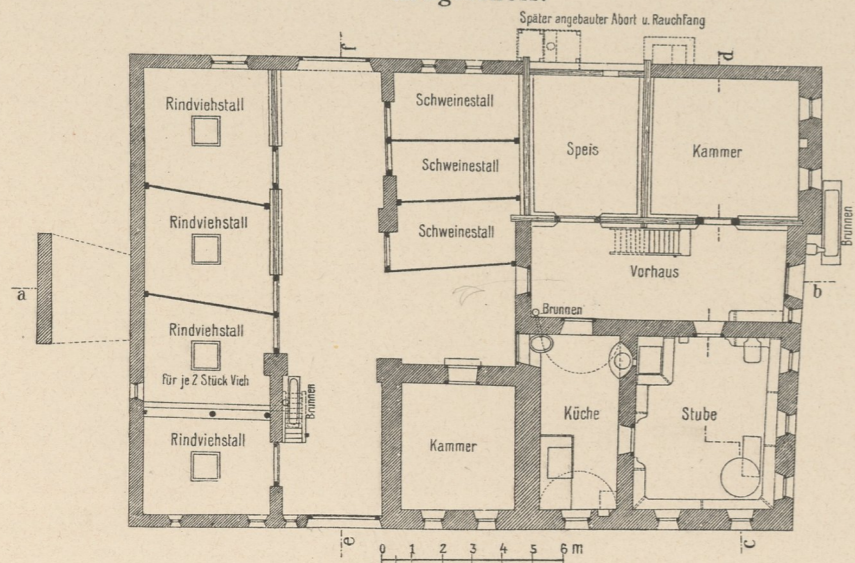


Seitenansicht.

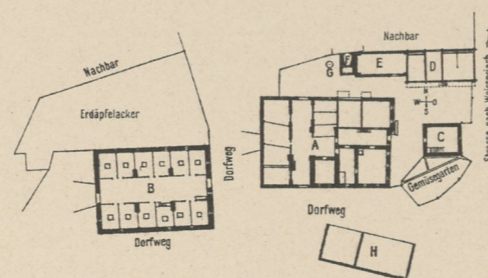
Schnitt c d.
Schnitt c d.



Erdgeschoss.

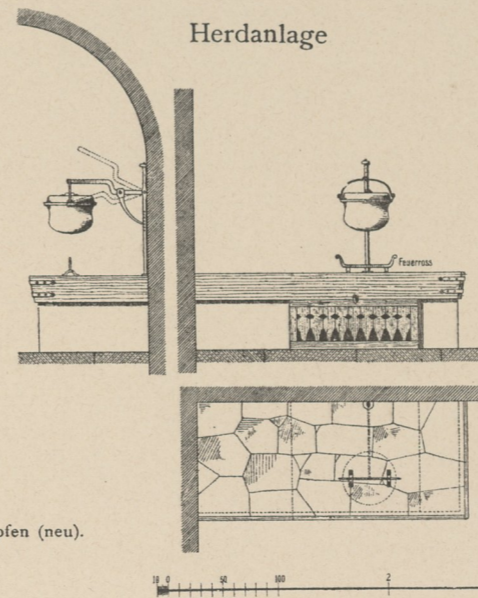


Situation.

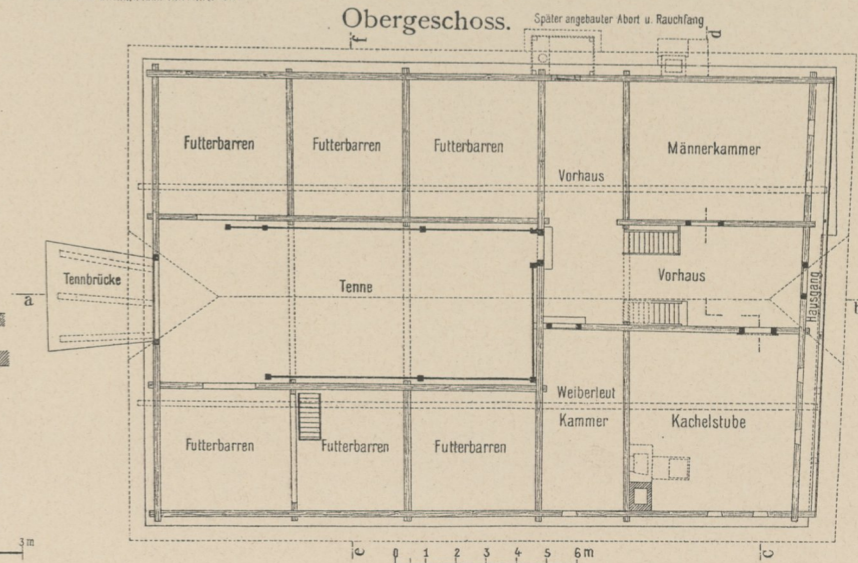


- A = Wohnhaus
- B = Rindviehstall
- C = Getreidekasten.
- D = Getreide- und Schafstall.
- E = Remise
- F = Backofen
- G = Krautfas
- H = Holzlager und Schupfen (neu).

Herdanlage



Obergeschoss.



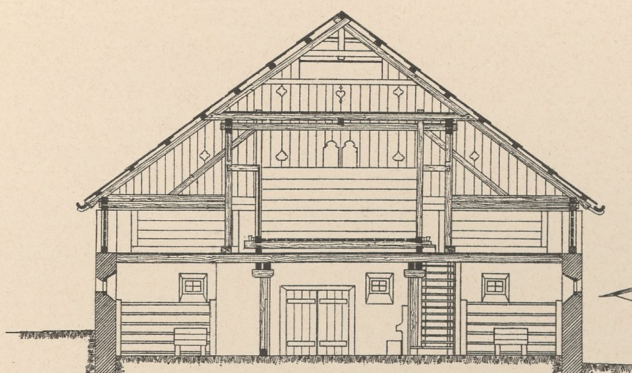
Aufgenommen von Vitus Berger, Salzburg.



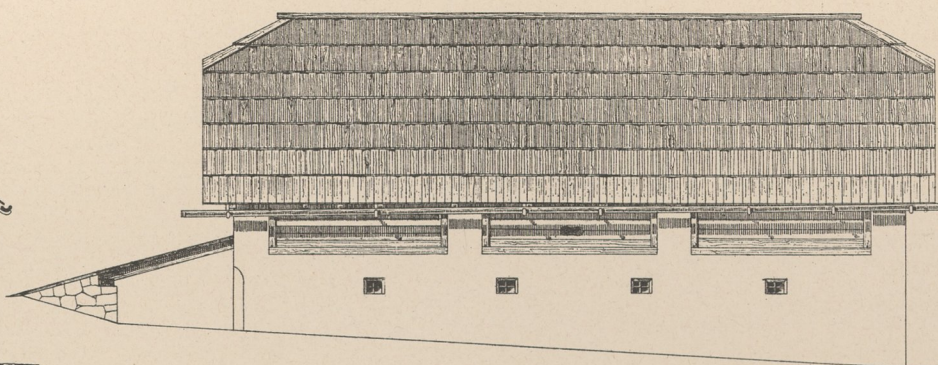
Ernstgut in Fanning, Bezirk Tamsweg im Lungau.

Rindviehstall.

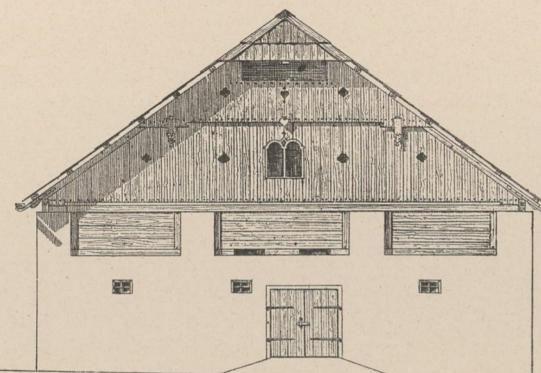
Schnitt a b.



Ansicht gegen Süden.

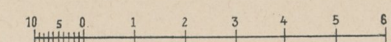
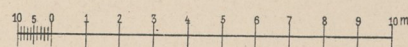
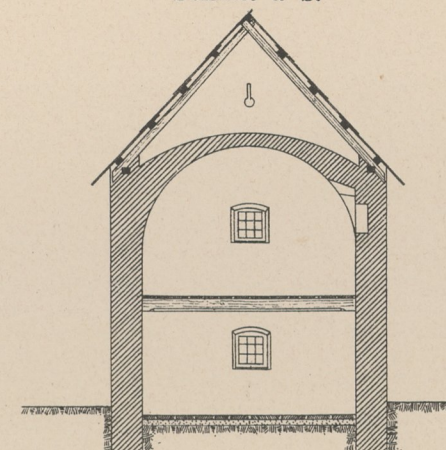


Ansicht gegen Osten.

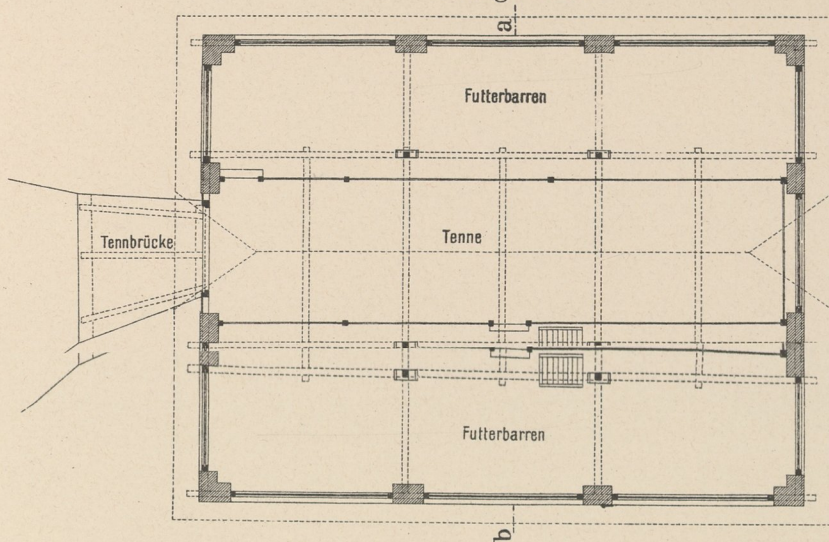


Getreidekasten.

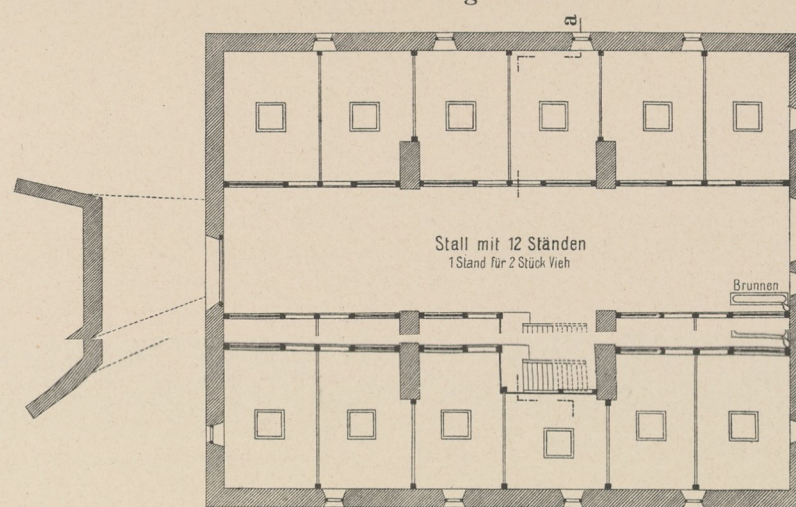
Schnitt a b.



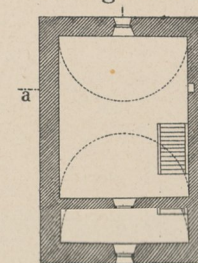
Obergeschoss.



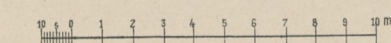
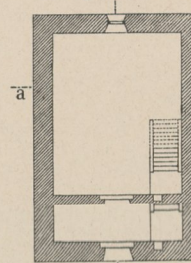
Erdgeschoss.



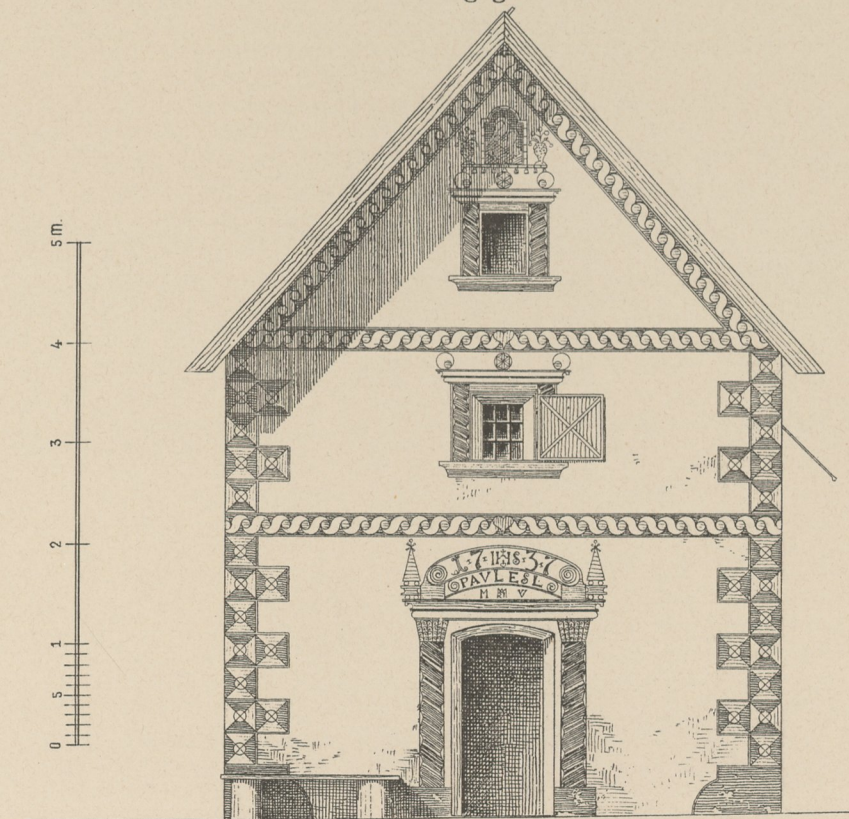
Obergeschoss.



Erdgeschoss.

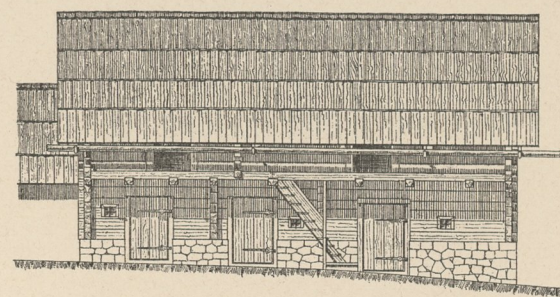


Ansicht gegen Norden.

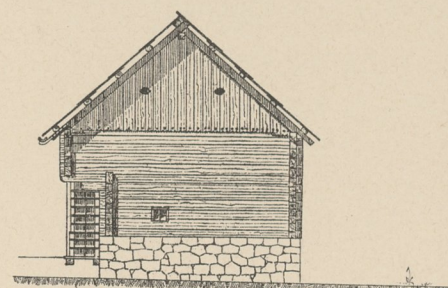


Pferde- und Schafstall.

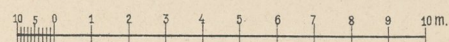
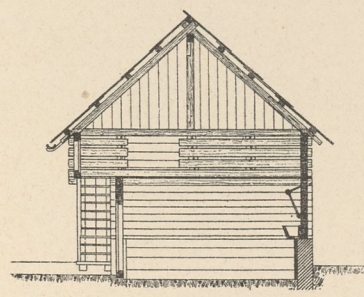
Ansicht gegen Süden.



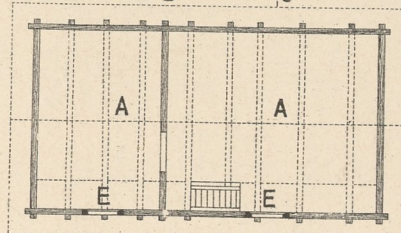
Ansicht gegen Osten.



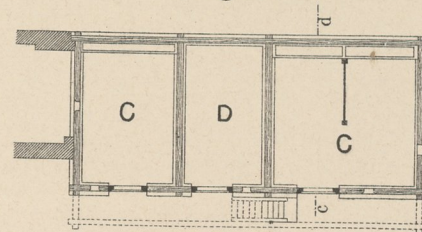
Schnitt c d.



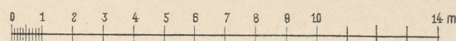
Obergeschoss.



Erdgeschoss.



Obergeschoss. Erdgeschoss
 A = Futterboden. C = Pferdestall.
 E = Einwurf. D = Schafstall.



Aufgenommen von Vitus Berger, Salzburg.