

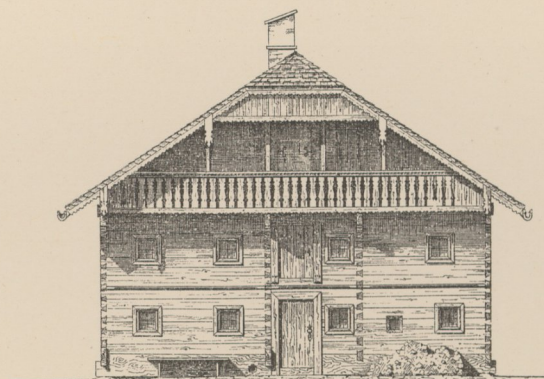


### Nieder-Traxl-Gut in Berg bei Söllheim.

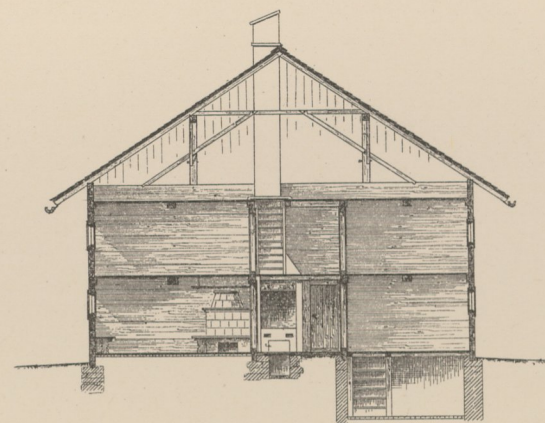
Ansicht von Ost.



Vorder-Ansicht.



Schnitt S S.



Gang-Details.

Fig. 1. Ansicht.

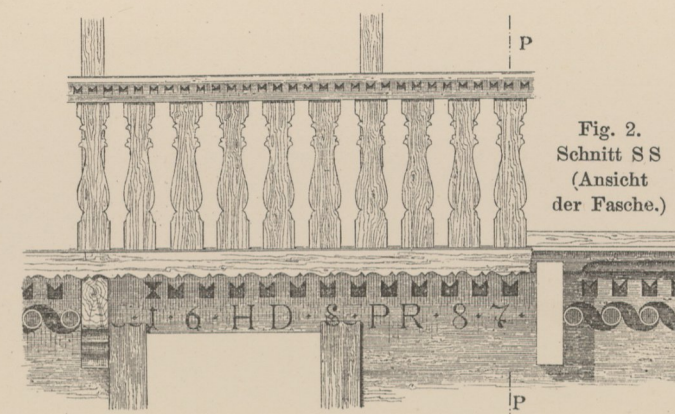
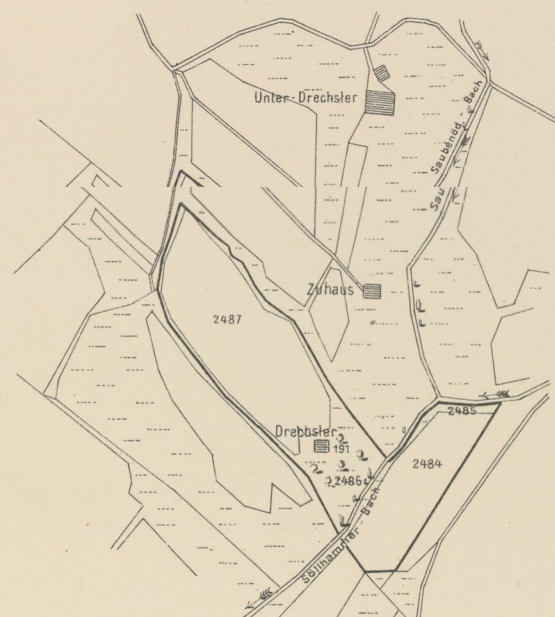
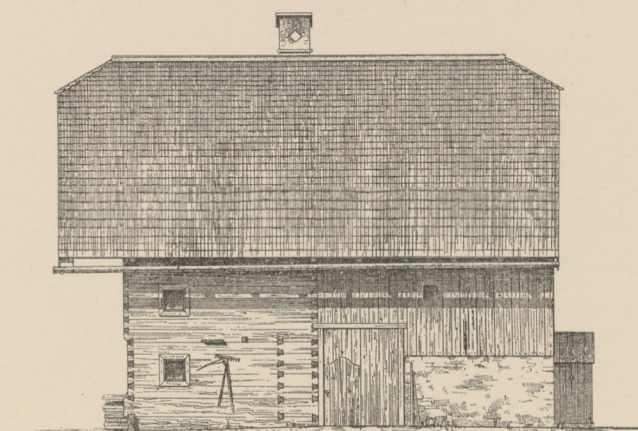


Fig. 2. Schnitt S S (Ansicht der Fasche.)

Lage-Plan.



Seiten-Ansicht.



Schnitt L L.

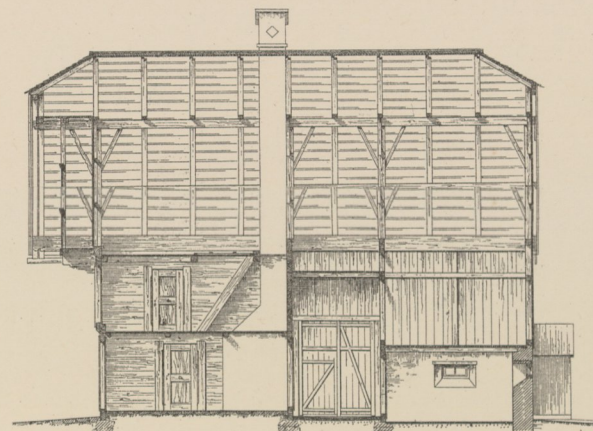
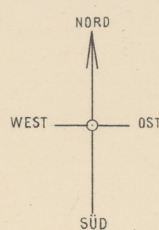
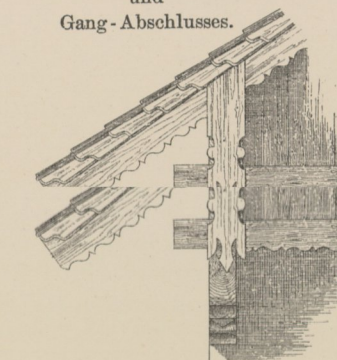
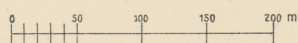


Fig. 5. Ansicht des Dach- und Gang-Abschlusses.



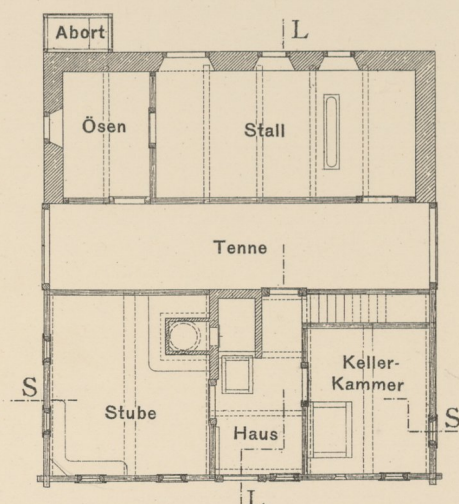
Maasstab zum Lage-Plan.



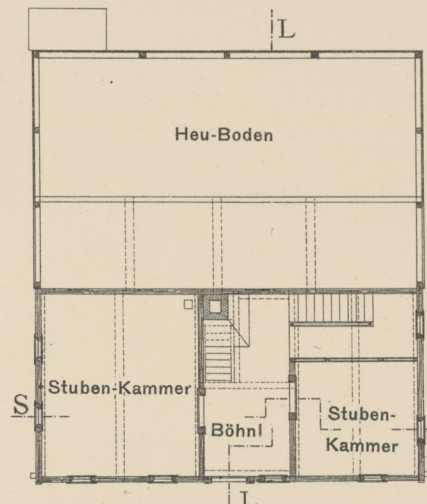
**Bemerkung:**

- »Unter-Drechsler« = »Nieder-Traxl-Gut«;
- »Zuhaus« = dto. zum »Ober-Traxl-Gut«;
- »Drechsler« = »Nieder-Traxl-Gütel« (einst Zuhaus des »Nieder-Traxl-Gutes«).

Ebenerd.



I. Stock.



Dachboden.

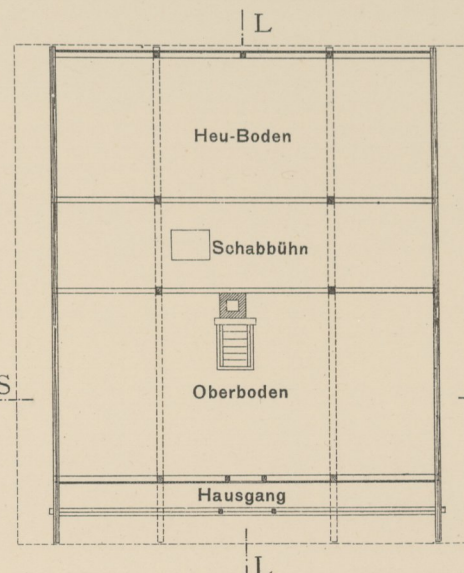


Fig. 3. Querprofil. (Schnitt P P.) mit Seitenansicht der Gangeconsole.

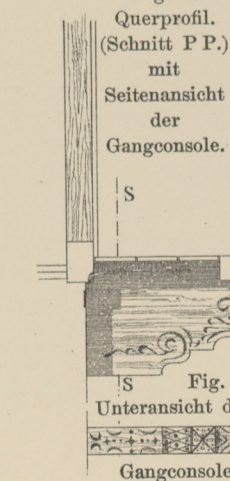


Fig. 4. Untersicht der Gangeconsole.

Fig. 7. Ansicht des Fensters.

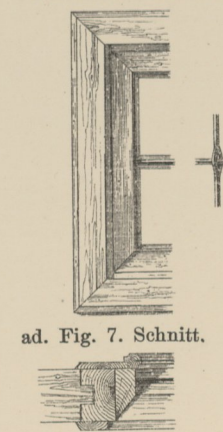
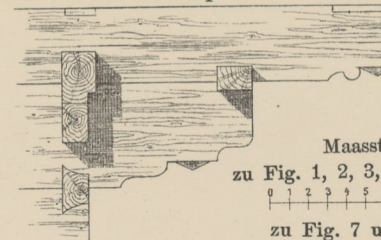


Fig. 6. Seitenansicht der Endpfette und Endconsole.



Maasstab zu Fig. 1, 2, 3, 4, 5 und 6. zu Fig. 7 und ad 7.

Aufgenommen von J. Eigl.