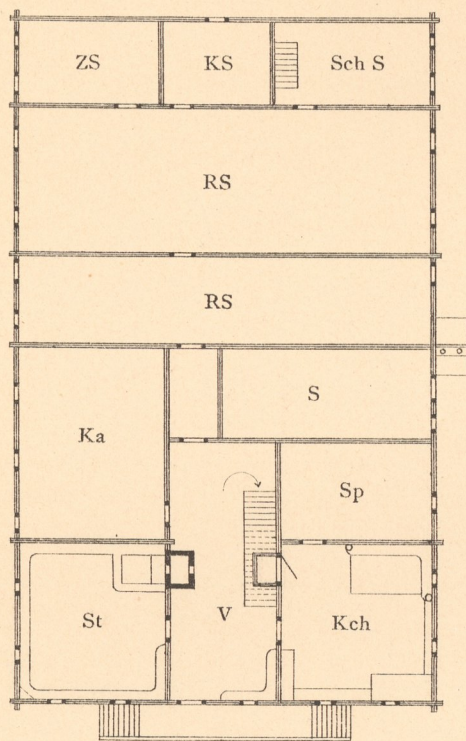


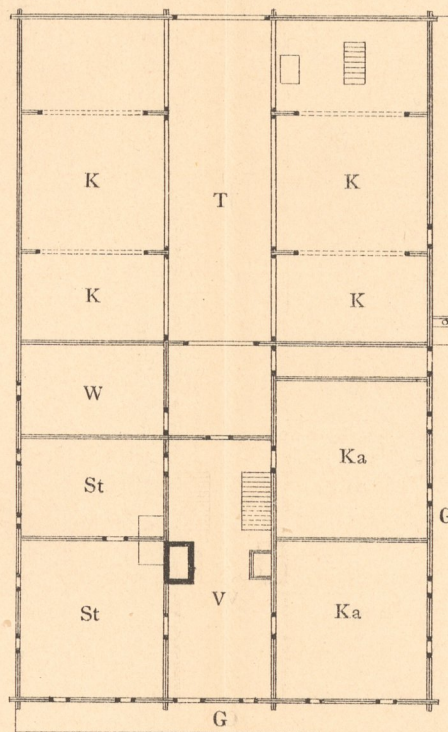
PROST-GUT.

(Tirol).

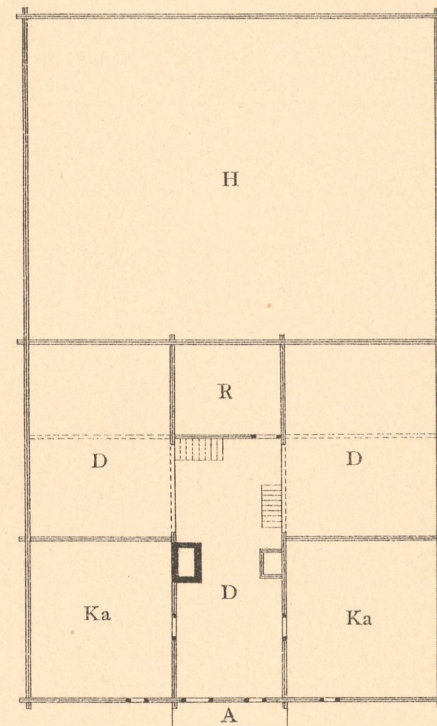
Ebener Erde.



I. Stock.



Dachboden.



St\_ Stube;  
V\_ Vorhaus;  
K\_ Küche  
Ka\_ Kammer;  
Sp\_ Speise;  
S\_ Stall für Pferde;  
RS\_ Rindvieh - Ställe;  
KS\_ Kälber - Stall;  
ZS\_ Ziegen - Stall;  
Sch S\_ Schaf - Stall.

V\_ Vorhaus;  
St\_ Stuben;  
Ka\_ Kammern;  
T\_ Tenne;  
K\_ Karé; W Werkst;  
G\_ Hausgang.

Ka\_ Kammern;  
D\_ Dachboden;  
A\_ Altane;  
H\_ Heuboden;  
R\_ Requisiten.

