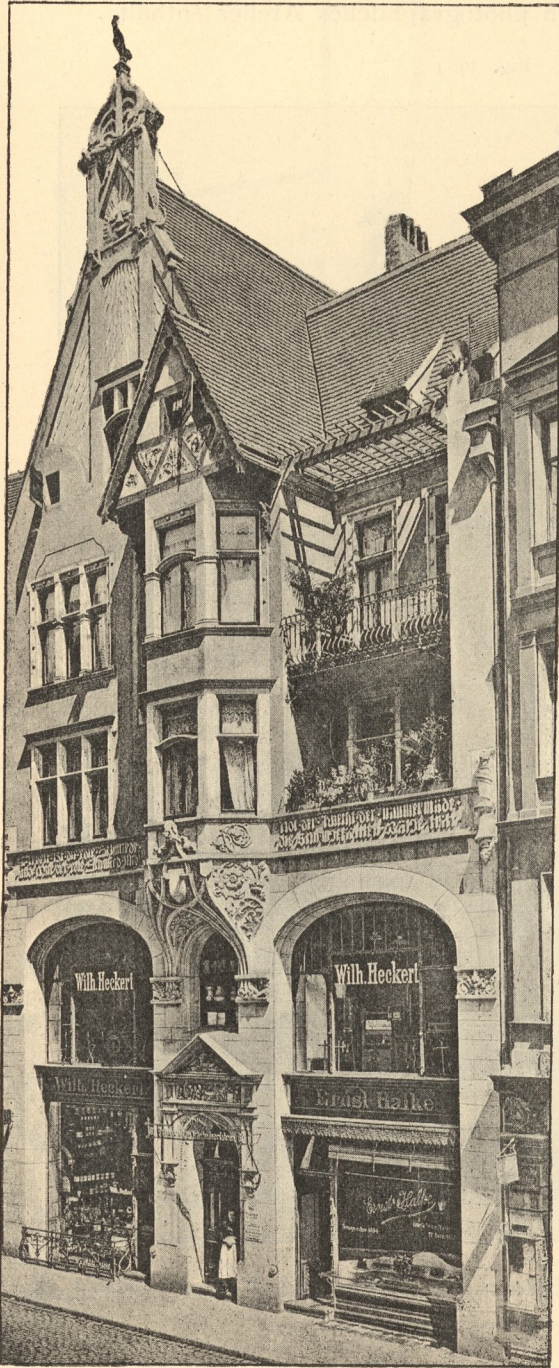


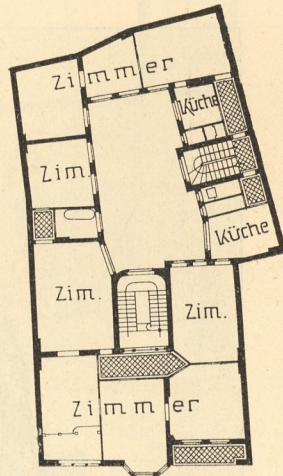
Fig. 36.



Schaufseite.

Kauf- und Wohnhaus zu Halle a. S.¹³⁾

Fig. 37.

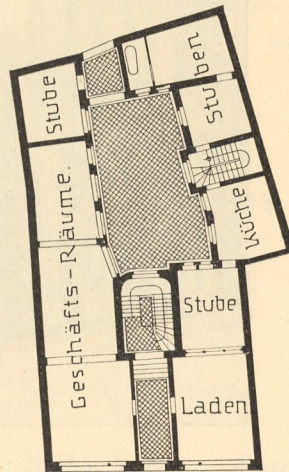


II. Obergeschoss.

 $\frac{1}{500}$ w. Gr.

Arch.: Afsmann & Seydel.

Fig. 38.



Erdgeschoss.

¹³⁾ Nach: Blätter f. Arch. u. Kunsthdwk., Jahrg. 13, S. 80 u. Taf. 103.