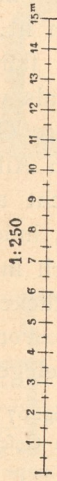
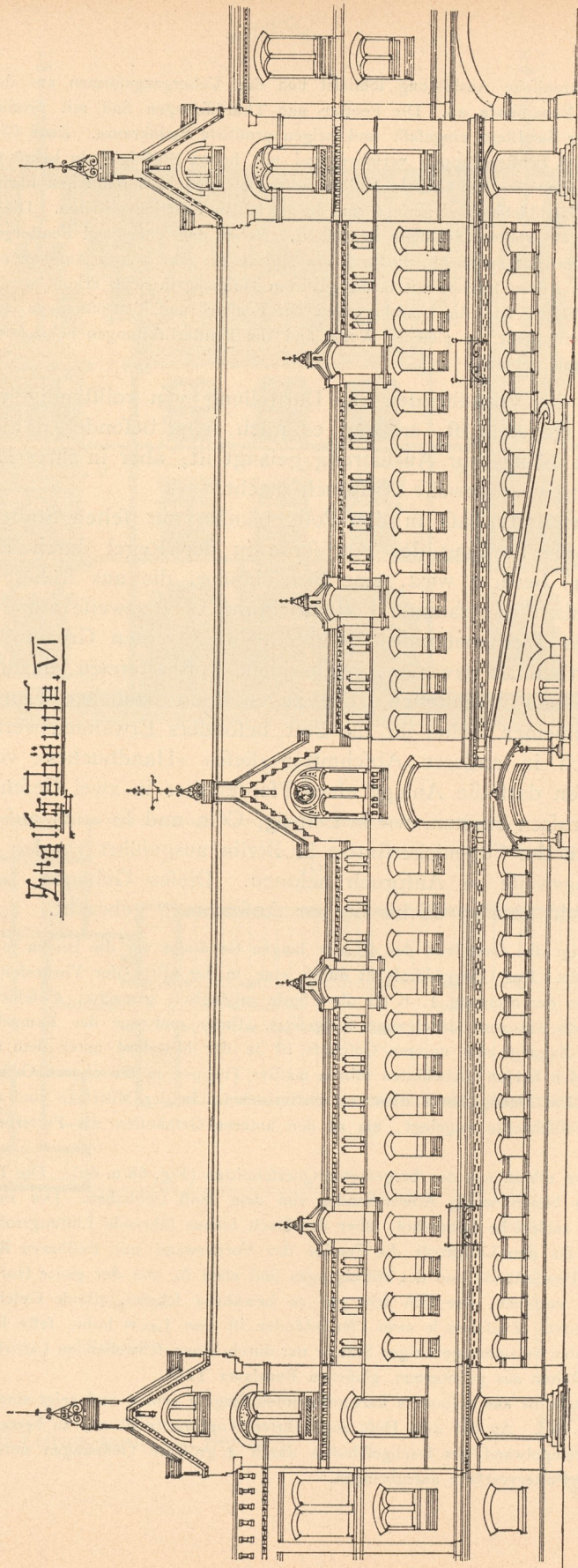


Königliches Theatergebäude, Berlin,
Küper'scher Arch. u. Maschinenb. B.

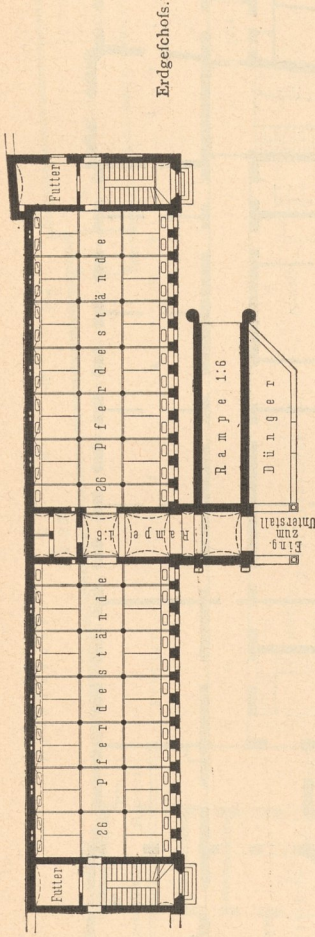
Fig. 66.

Theatergebäude, VI



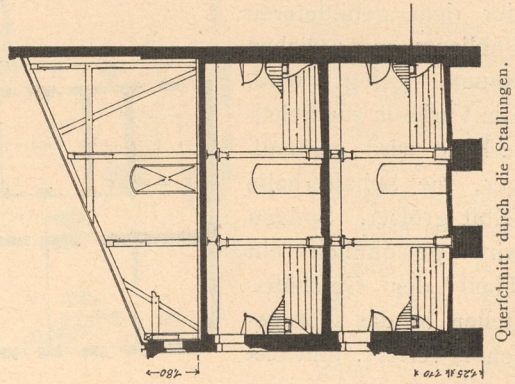
Ansicht.

Fig. 67.



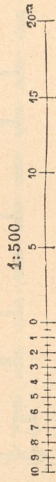
Erdegehoft.

Fig. 68.

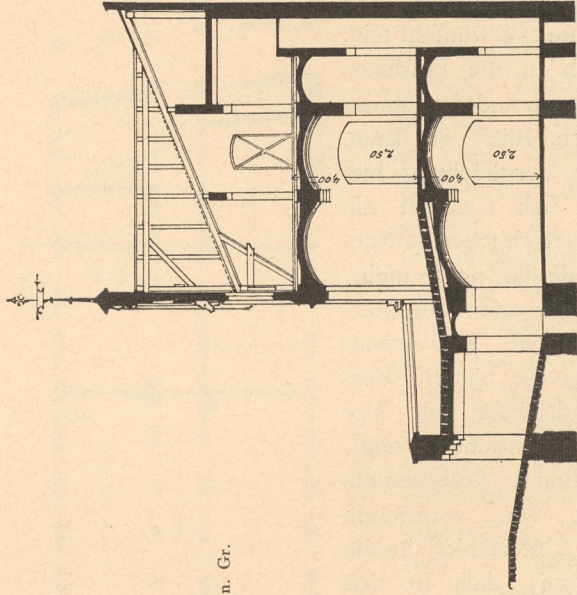


Querschnitt durch die Stallungen.

Fig. 69.



1/250 n. Gr.



Querschnitt durch den Mittelbau.