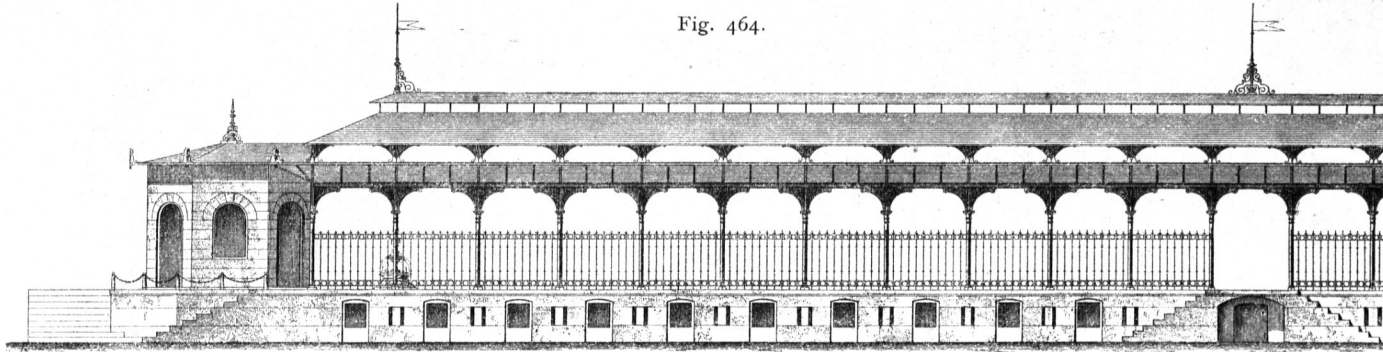


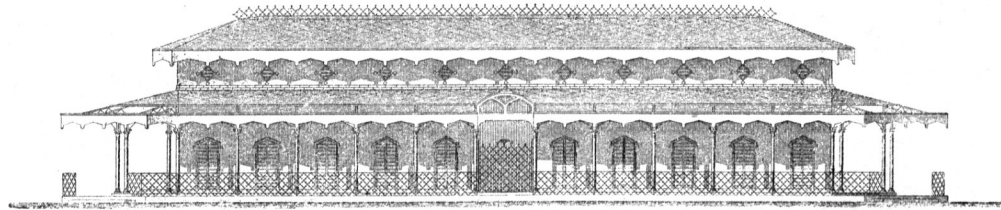
Fig. 464.



Anficht der Markthalle für Gemüse, Obst etc. zu Mailand²³³).

Fig. 465.

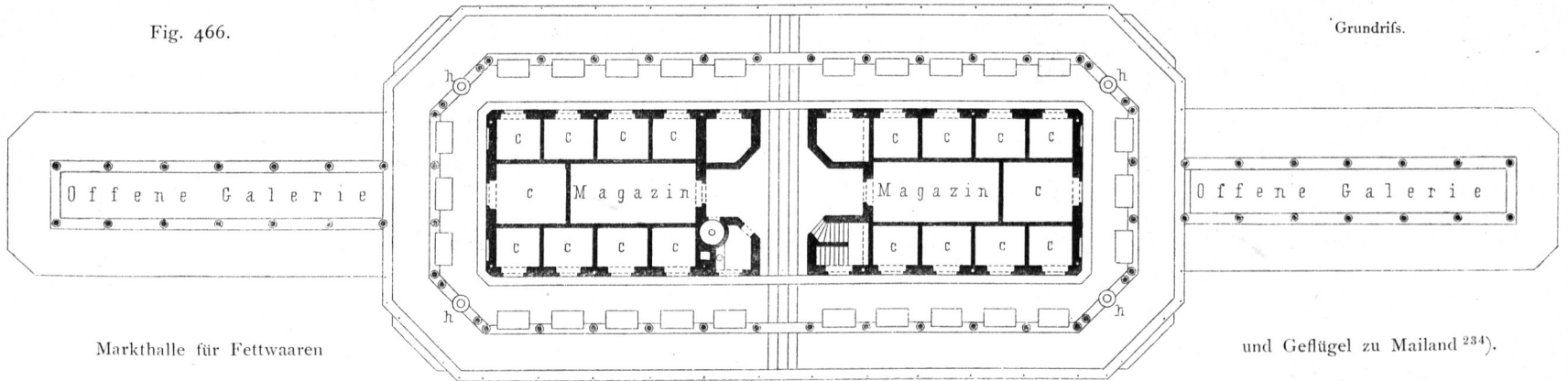
1/500 n. Gr.



Anficht.

Arch.: *Nazari*.

Fig. 466.



Grundriß.

Markthalle für Fettwaaren

und Geflügel zu Mailand²³⁴).