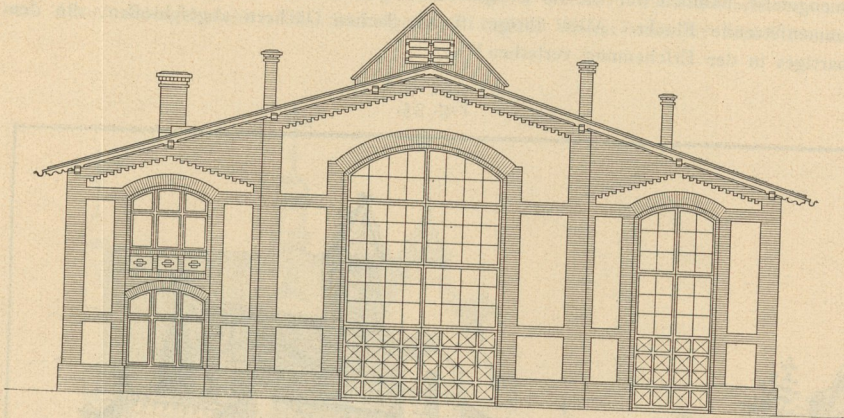


Fig. 37.



Anficht der Nordfront.

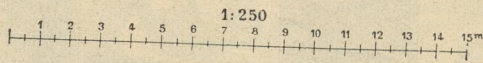
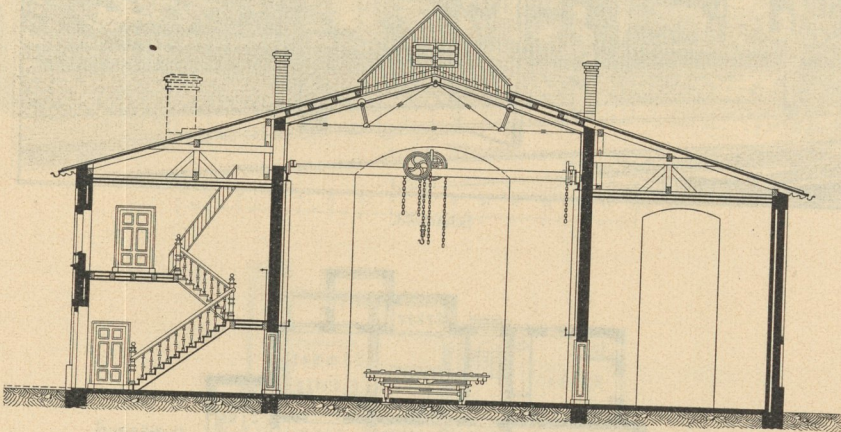
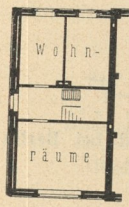


Fig. 38.



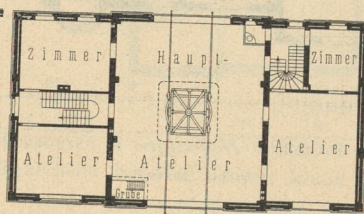
Längenschnitt.

Fig. 39.



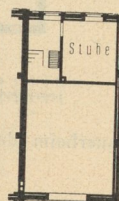
Obergeschoss.

Fig. 40.

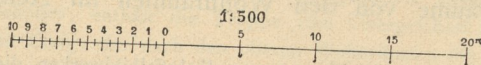


Erdgeschoss.

Fig. 41.



Obergeschoss.



Bildhaueratelier für Monumentalbildwerke am Kronprinzen-Ufer zu Berlin.