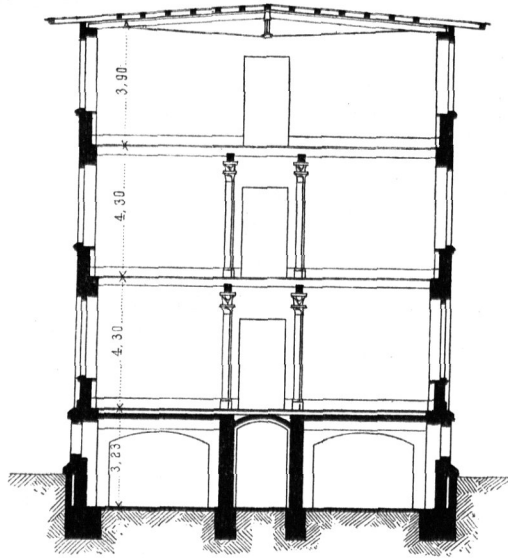


Fig. 352.



Städtisches Arbeitshaus  
zu  
Rummelsburg  
bei Berlin <sup>352</sup>).

Arch.: *Blankenfein.*

Quer-  
schnitt.

Quer-  
schnitt.

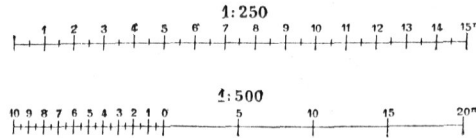


Fig. 355.

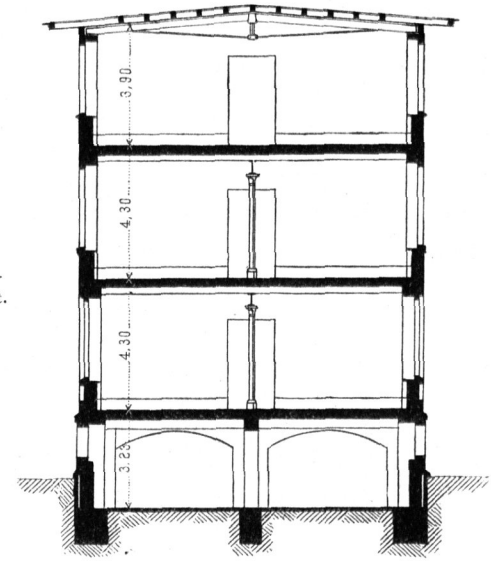
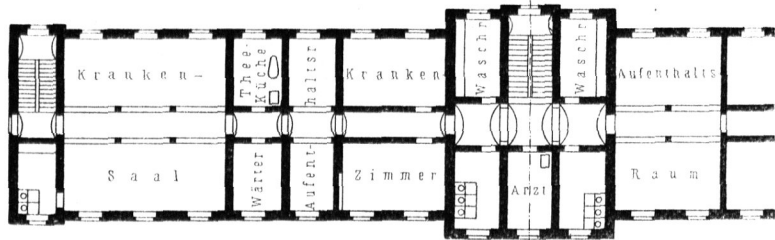


Fig. 353.



I. Ober-  
Erd-  
geschlofs.

Fig. 356.

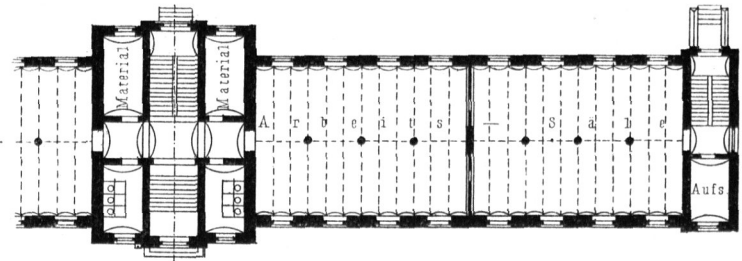
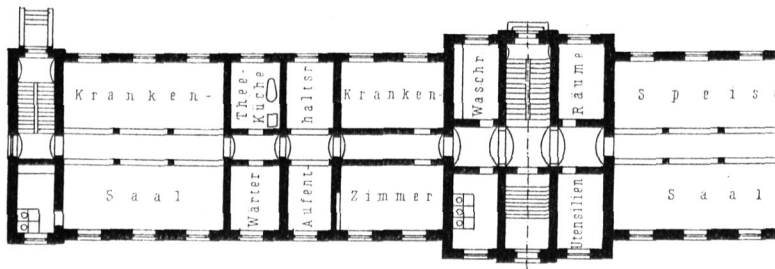
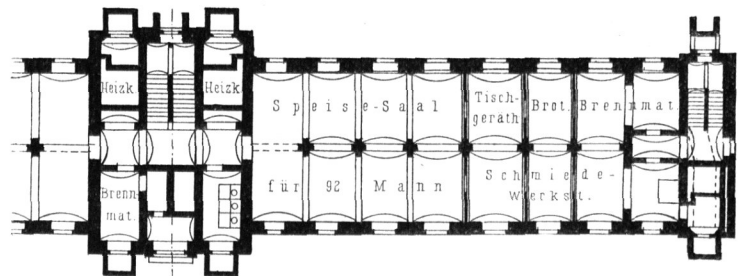


Fig. 354.



Erd-  
Sockel-  
geschlofs.

Fig. 357.



Gebäude für männliche Hospitaliten.

Gebäude für männliche Häuslinge.