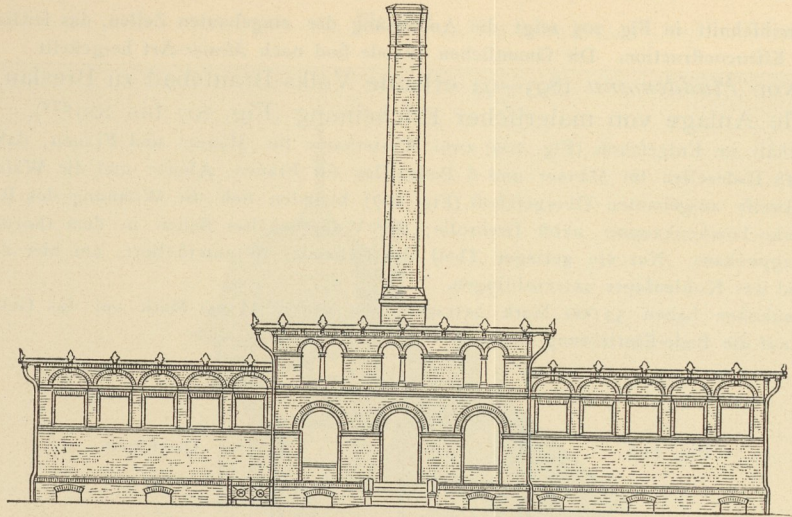


Fig. 212.



Vorderansicht.

1:300

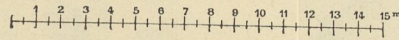
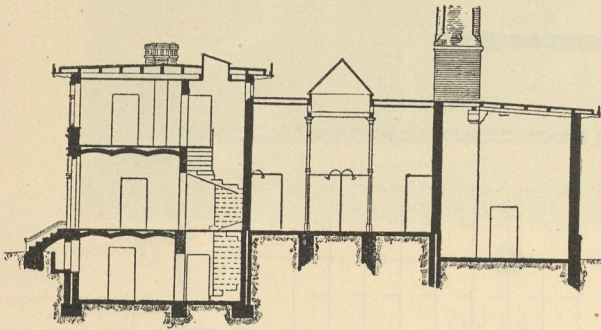
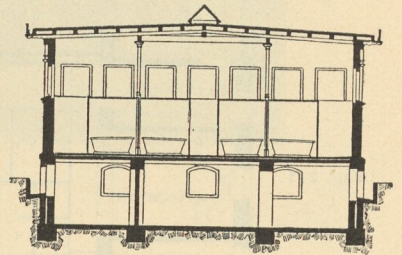


Fig. 213.



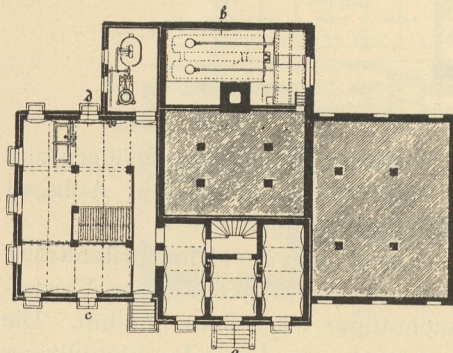
Längenschnitt.

Fig. 214.



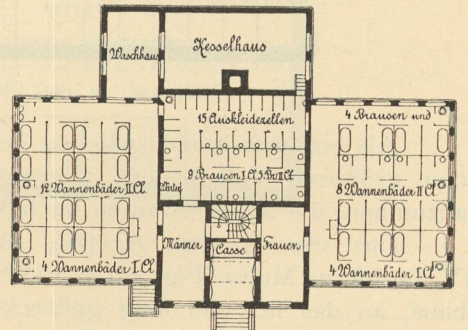
Querschnitt.

Fig. 215.



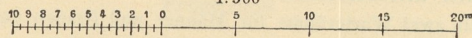
Untergechofs.

Fig. 216.



Erdgechofs.

1:500



Volksbade-Anstalten zu Berlin
(Gartenstraße 5—8 und Wallstraße 50²²⁵).

Arch.: Ende & Böckmann.