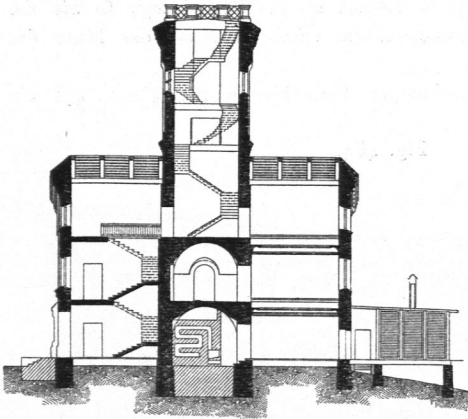
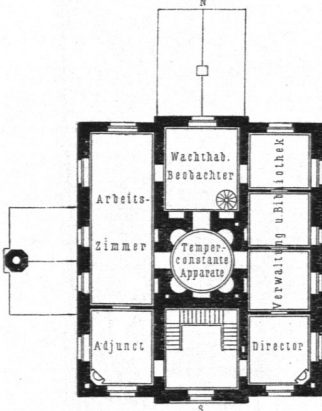


Fig. 485.



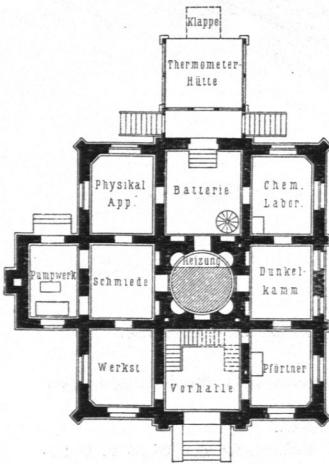
Schnitt.

Fig. 486.



I. Obergefchofs.

Fig. 487.

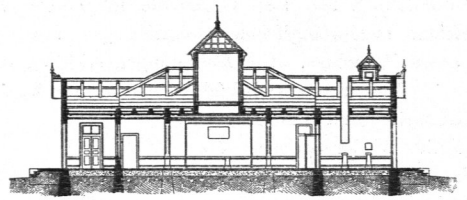


Erdgefchofs.

Hauptgebäude.

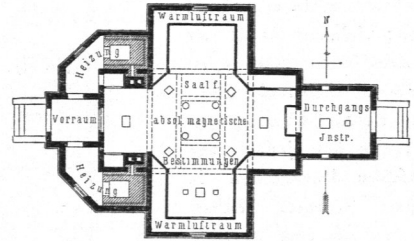
Magnetisch-meteorologisches Observatorium zu Pawlowsk bei Petersburg.

Fig. 488.



Längenschnitt.

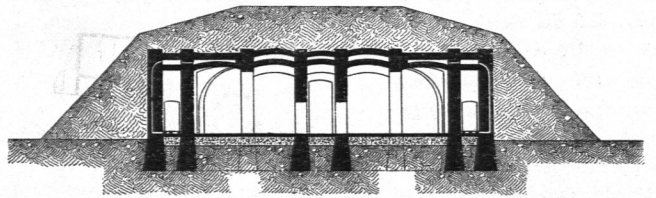
Fig. 489.



Grundriss.

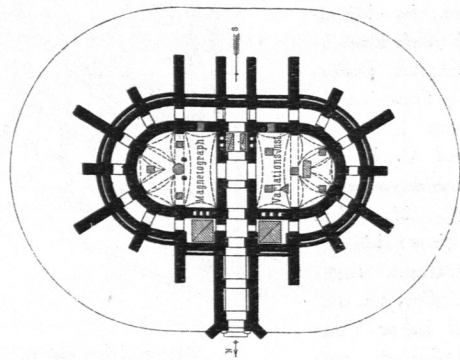
Pavillon für absolute magnetische Bestimmungen.

Fig. 490.



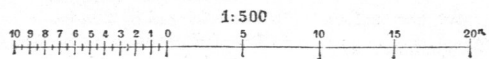
Längenschnitt.

Fig. 491.



Grundriss.

Unterrirdische magnetische Station für Variations-Beobachtungen.



Arch.: Bollenhagen.