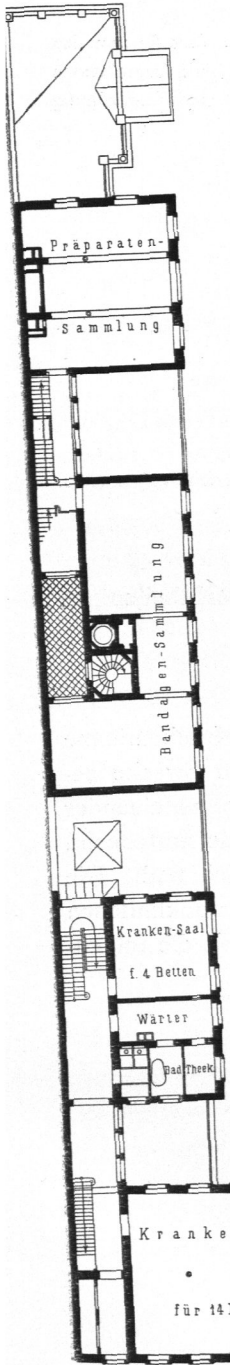


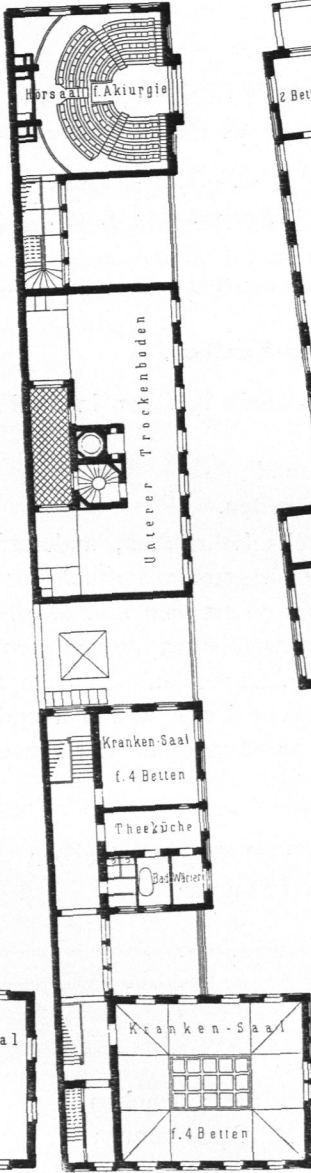
Fig. 348.



I. Obergefchofs.

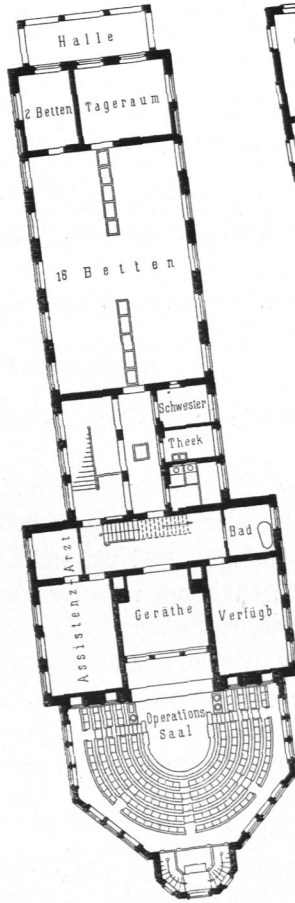
Oestliches Fluegelgebäude.

Fig. 349.



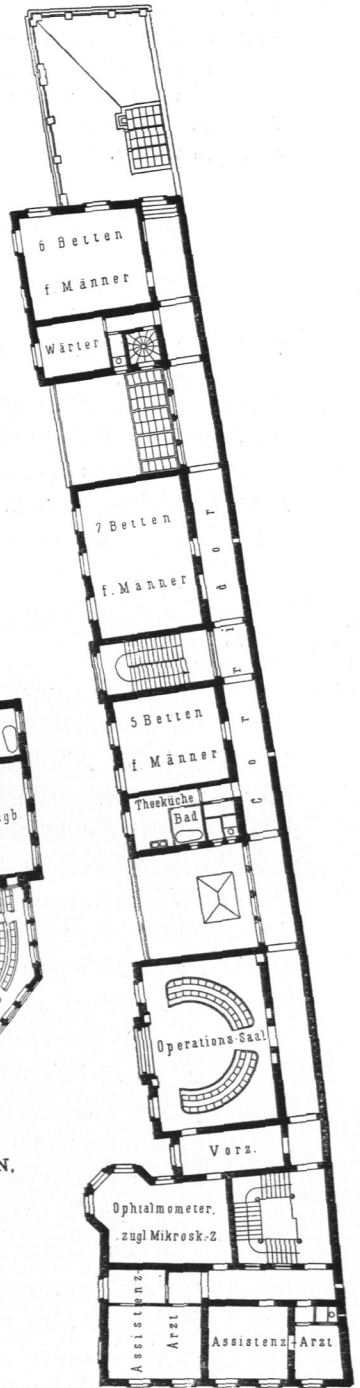
II. Obergefchofs.

Fig. 350.



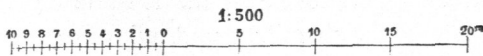
I. Obergefchofs.
KAISER-PAVILLON.

Fig. 351.



I. Obergefchofs.

Westliches Fluegelgebäude.



Chirurgische Klinik der Universität zu Berlin.

Arch.: Gropius & Schmieden.