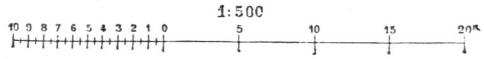
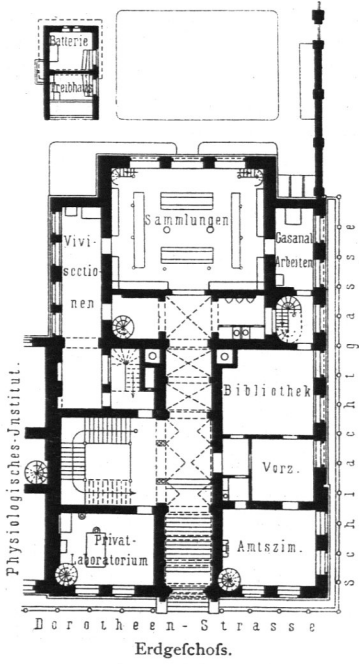


Fig. 333.



Arch.: Spieker & Zafran.

Fig. 334.

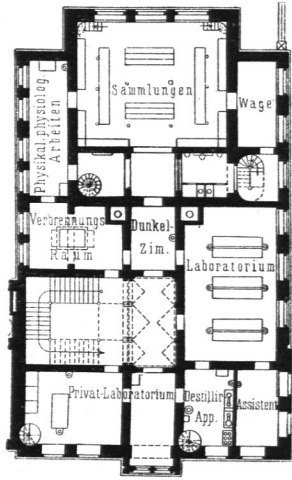
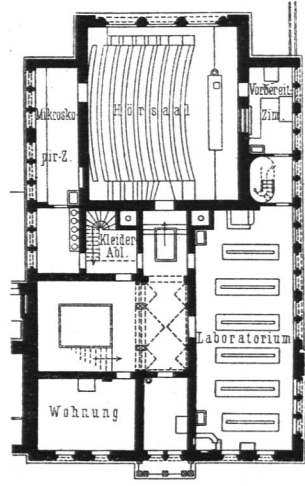


Fig. 335.

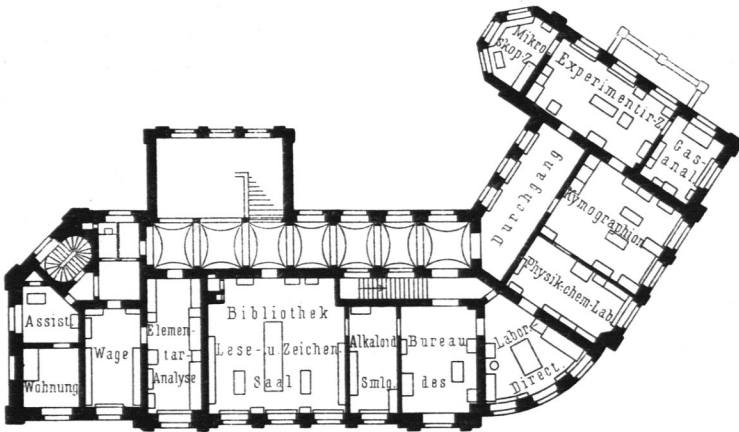


Pharmakologisches Institut der Universität zu Berlin.

I. Obergeschoss.

II. Obergeschoss.

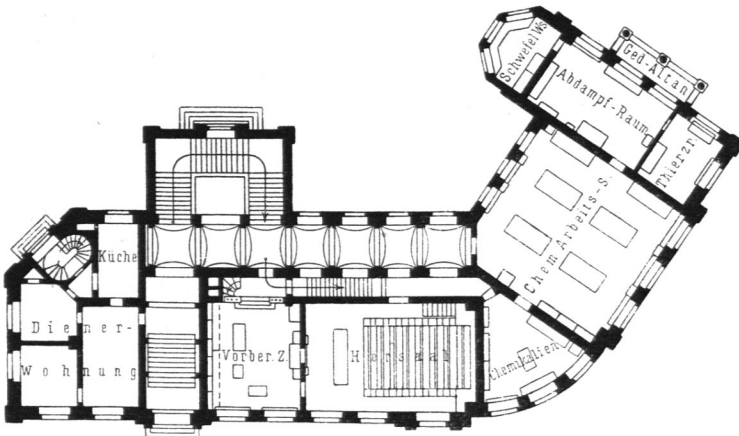
Fig. 336.



Obergeschoss.

Arch.: Warth.

Fig. 337.



Erdgeschoss.

Pharmakologisches Institut der Universität zu Straßburg<sup>317)</sup>.