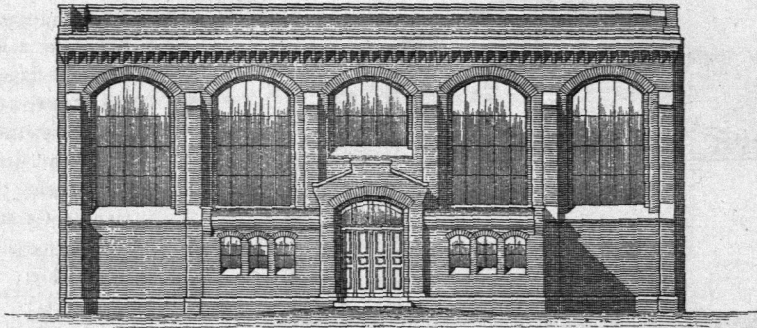
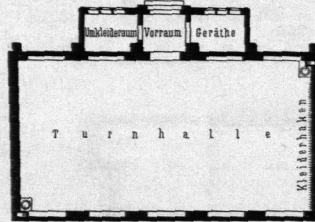


Fig. 338.



Rückwärtige  
Schaufseite.

Fig. 339.



Grundriss.

Turnanstalt des Gymnasiums zu Colberg.

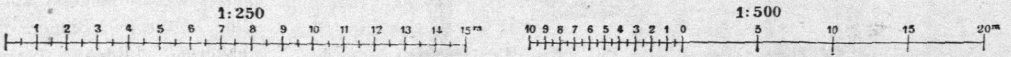
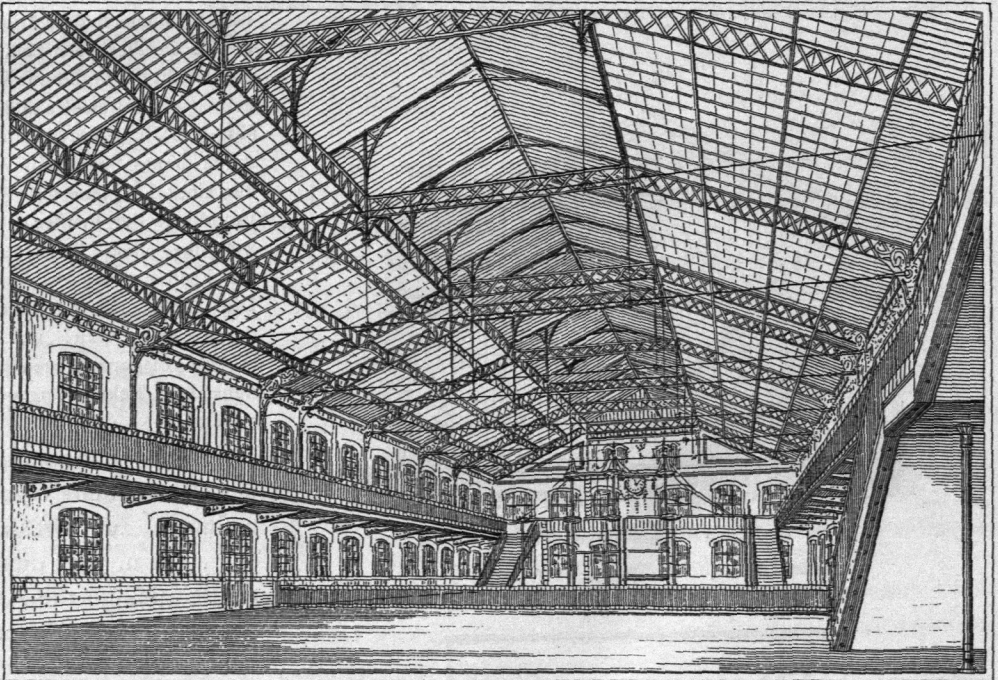


Fig. 340.



Turnhalle der *École Monge* zu Paris <sup>218)</sup>.

<sup>218)</sup> Nach: *Nouv. annales de la const.* 1877, S. 33 u. Pl. 13-14.