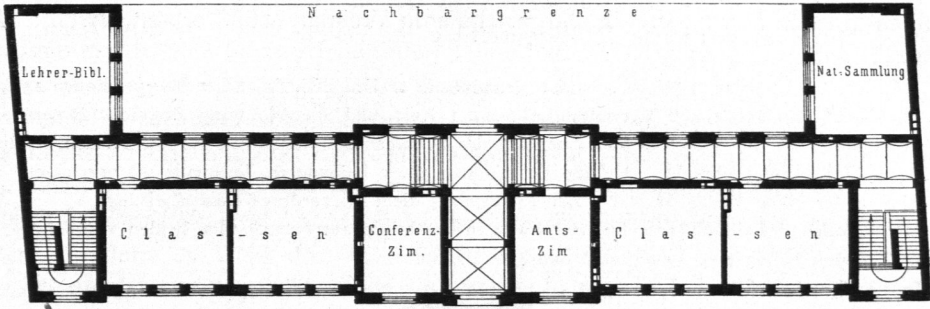


Fig. 122.



Bürgerchule an der Weissenburgertraße zu Berlin.

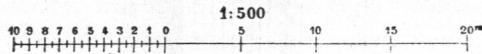
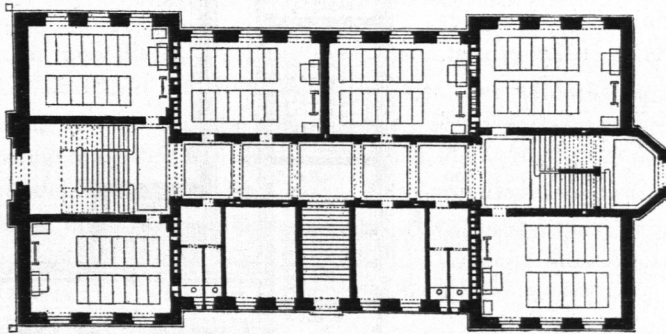


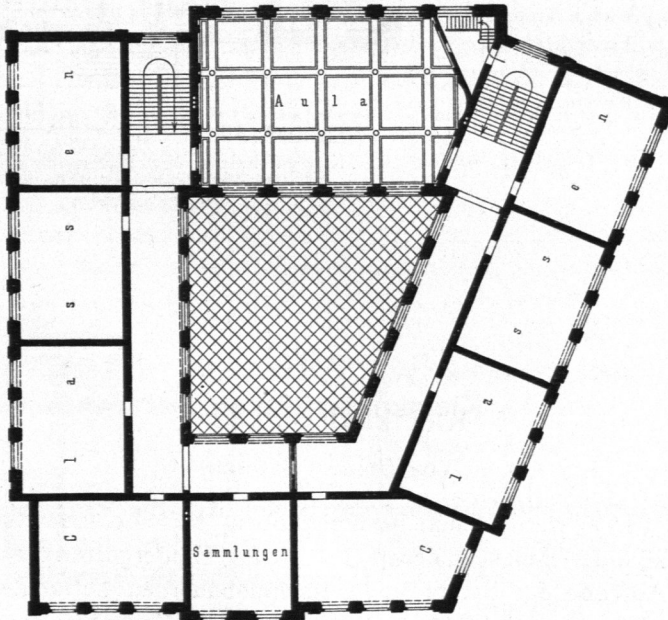
Fig. 123.



Arch.:  
Walter.

Bürgerchule an der Kafernen- und Schloßstraße zu Stuttgart <sup>64)</sup>.

Fig. 124.



Arch.:  
Has.

II. Bürgerchule zu Weimar.

<sup>64)</sup> Nach: Die sanitären Verhältnisse und Anfallen der Haupt- und Residenzstadt Stuttgart. Stuttgart 1879.