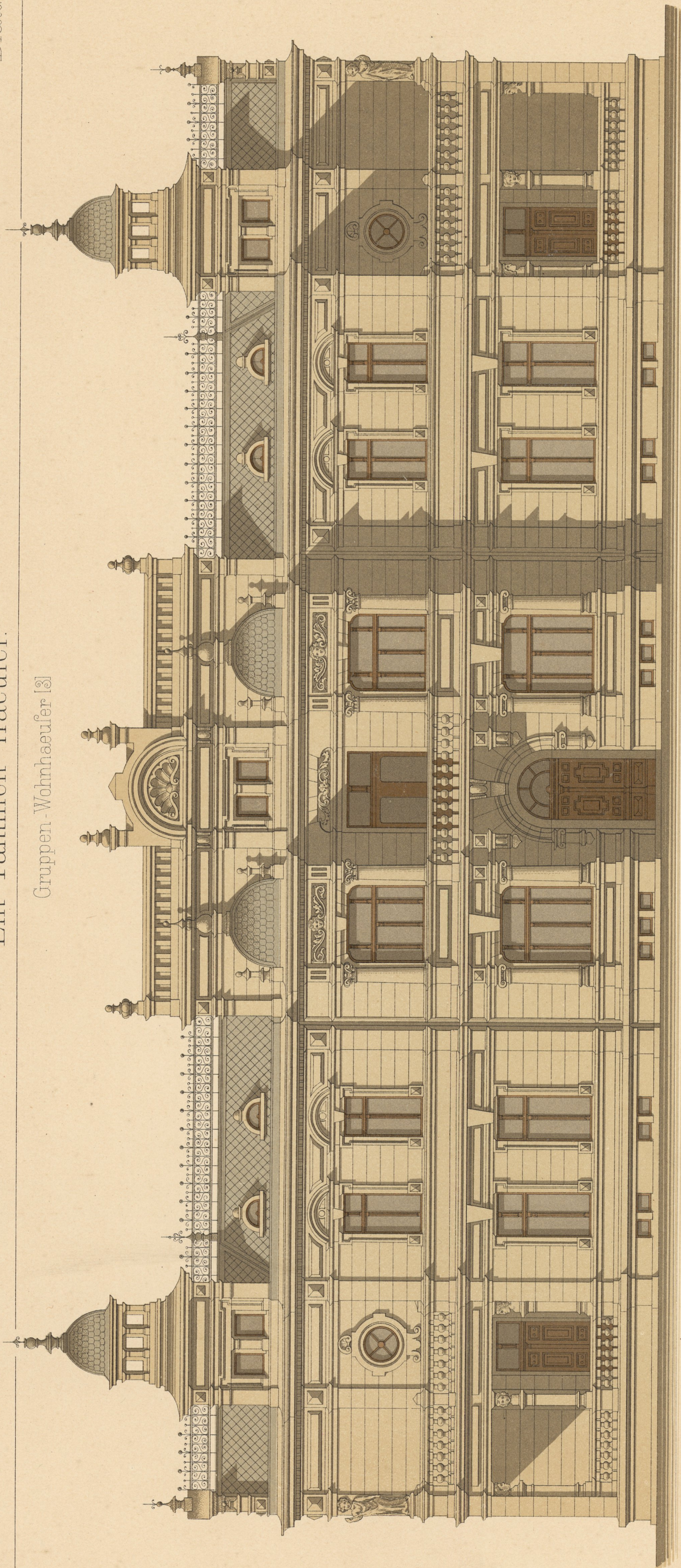
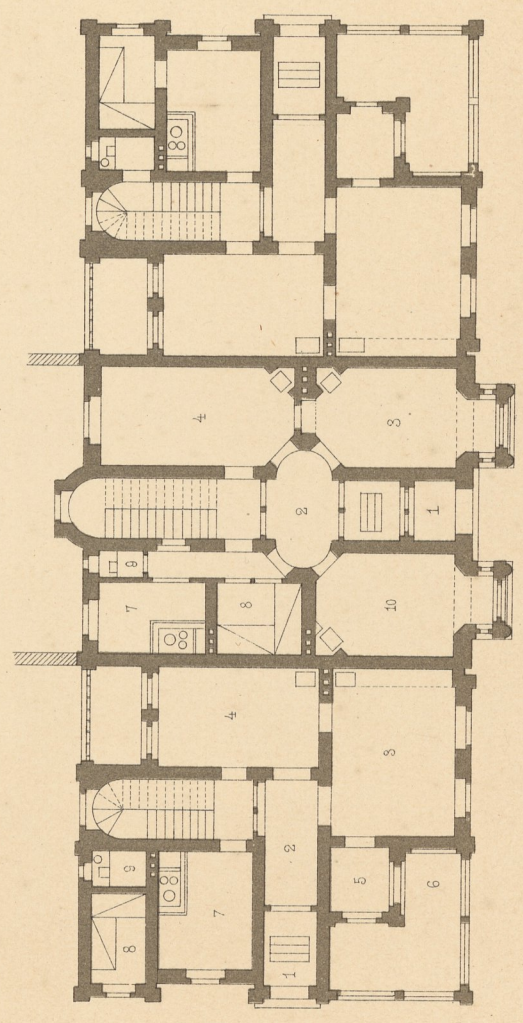
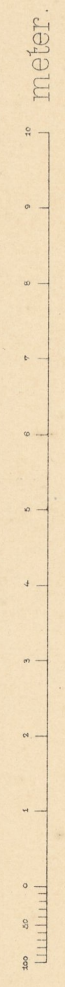


Gruppen - Wohnhaeuser [3]



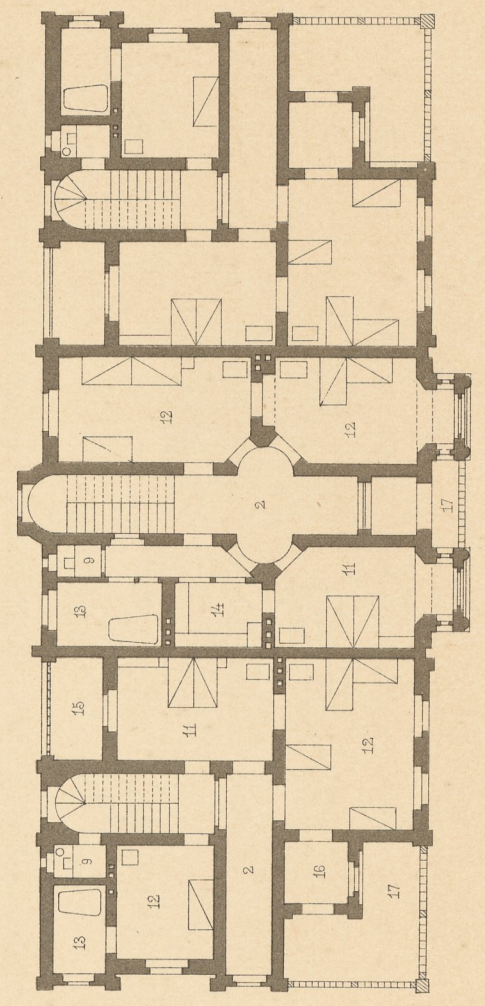
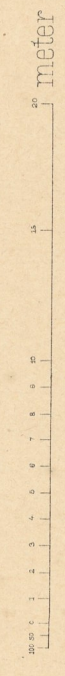
Ansicht.



Erdgeschoss.

- 1 Eingang
- 2 Vorzimmer
- 3 Wohnzimmer
- 4 Speisezimmer
- 5 Aufgang zur -
- 6 Terrasse
- 7 Küche
- 8 Dienerin
- 9 Cloiset

- 10 Zimmer des Herrn
- 11 Schlafzimmer
- 12 Kinderzimmer
- 13 Badezabimet
- 14 Garderobe
- 15 Gartenhalle
- 16 Thurm - Cabinet
- 17 Balcon



I.ter Stock.