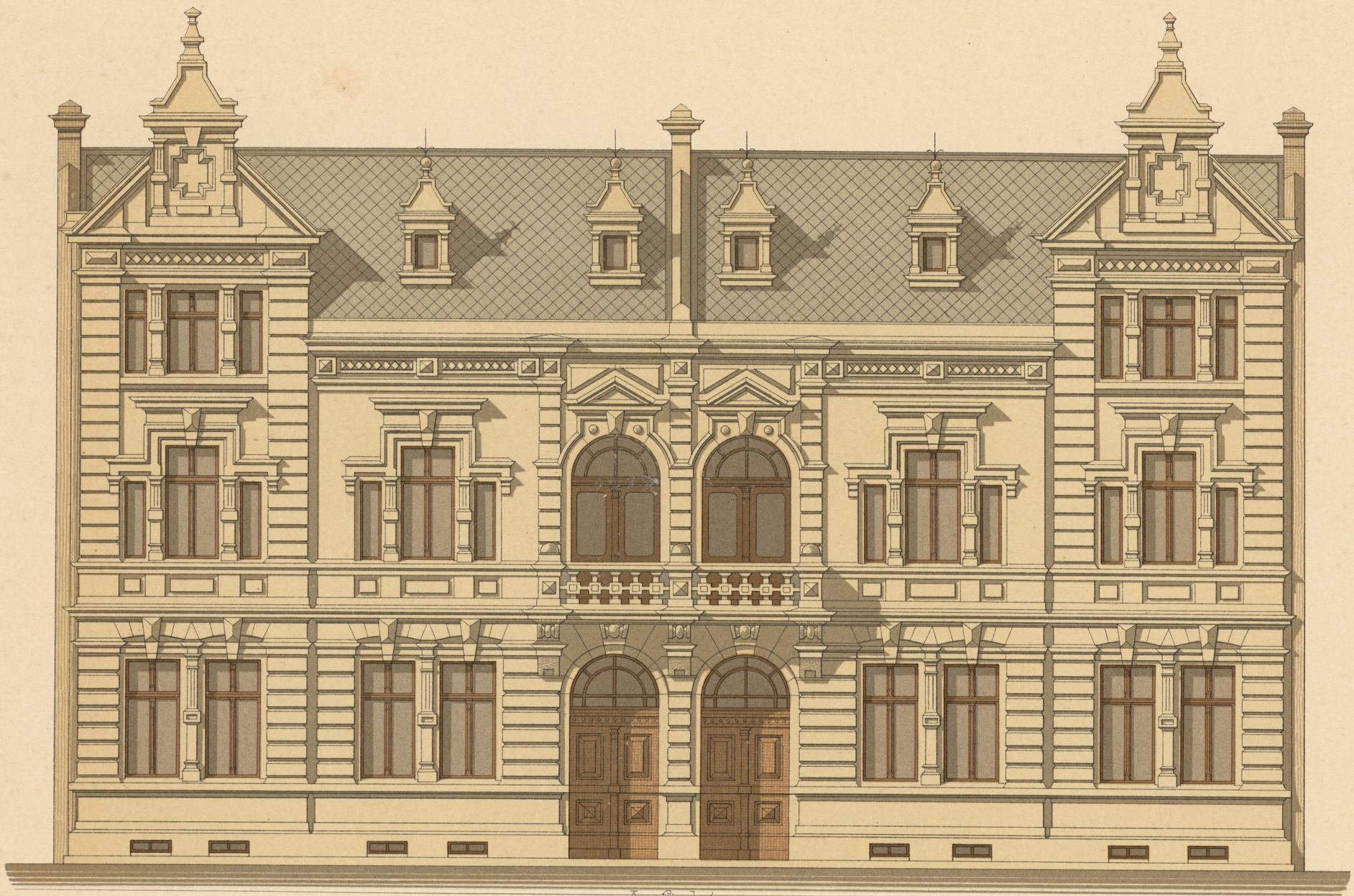
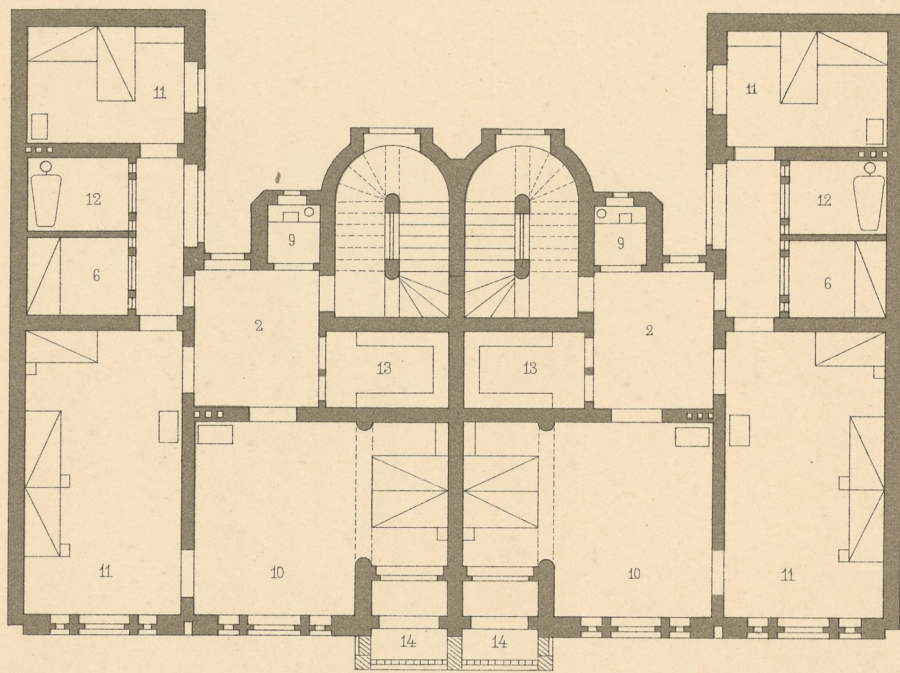


Eingebautes Doppelwohnhaus.

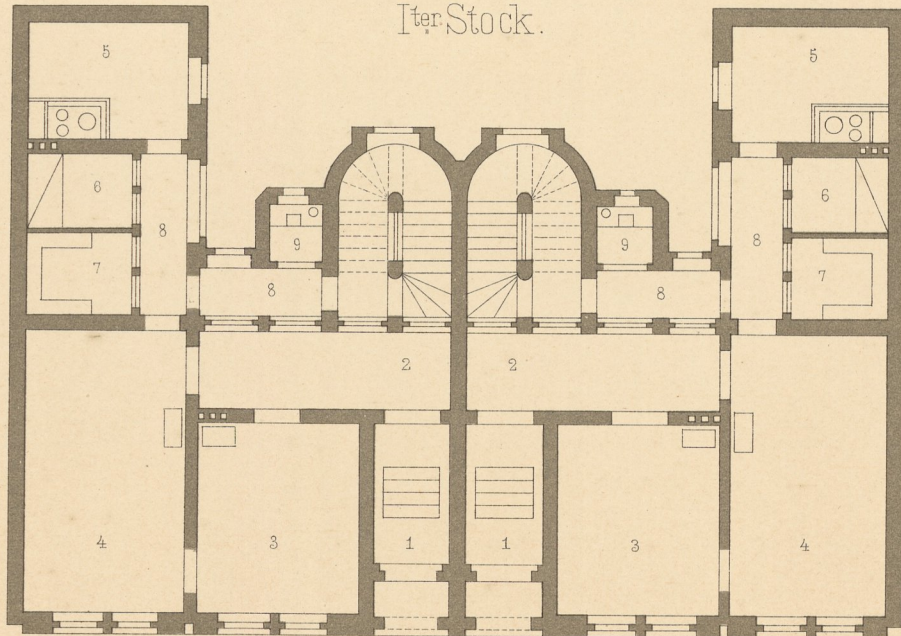


Anſicht.

meter.



1er Stock.



Erdgeschoss.

- 1 Eingang
- 2 Vorzimmer
- 3 Wohnzimmer
- 4 Speisezimmer
- 5 Küche
- 6 Dienerin
- 7 Speisekammer

- 8 Verbindungsgang
- 9 Cloſet
- 10 Schlafzimmer
- 11 Kinderzimmer
- 12 Badecabinet
- 13 Garderobe
- 14 Balcon

meter.