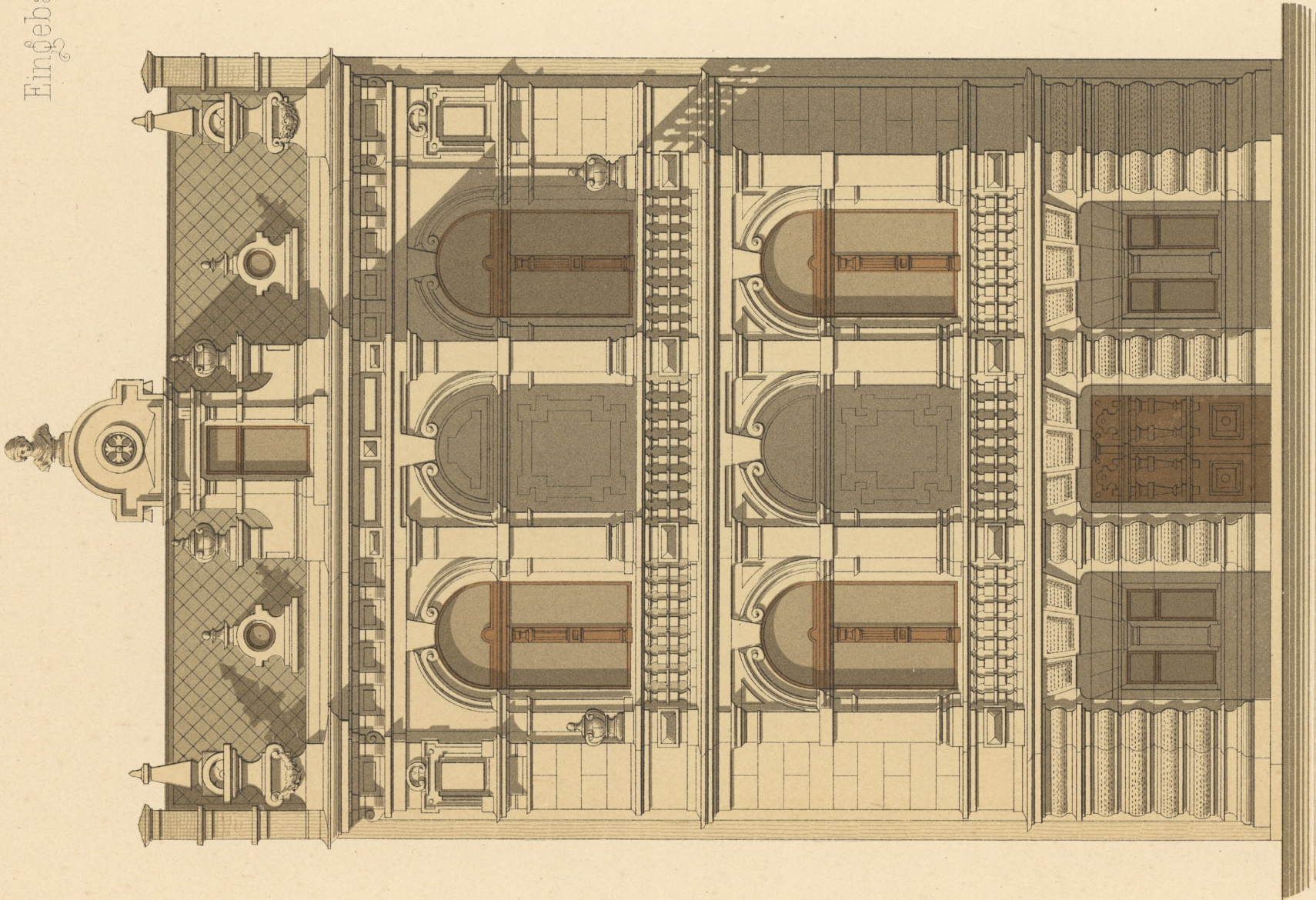
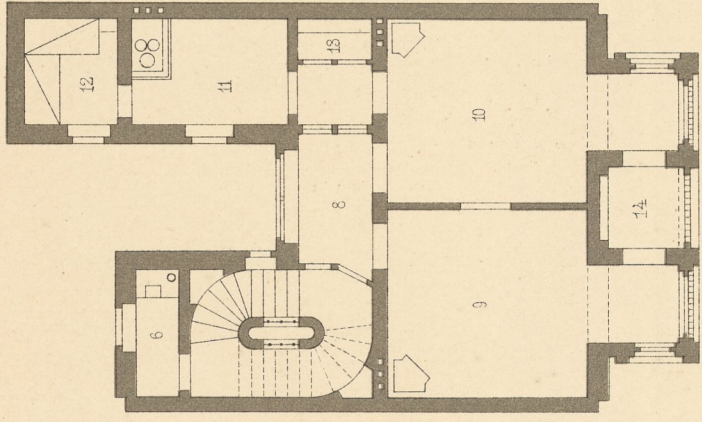
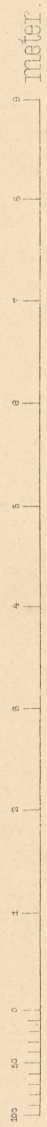


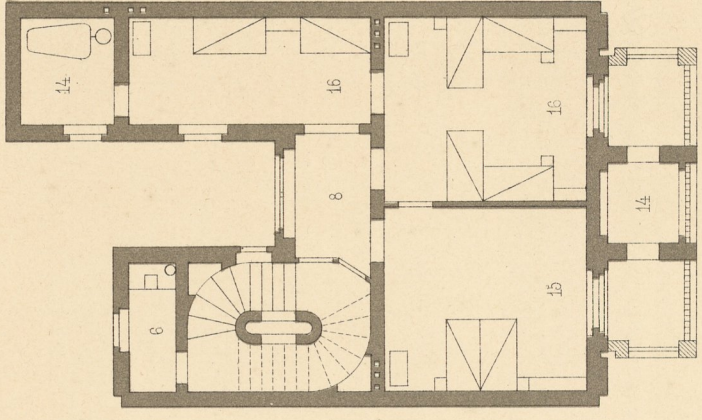
Eingebautes Wohnhaus an einer Vorgartenfrasse.



Ansicht.

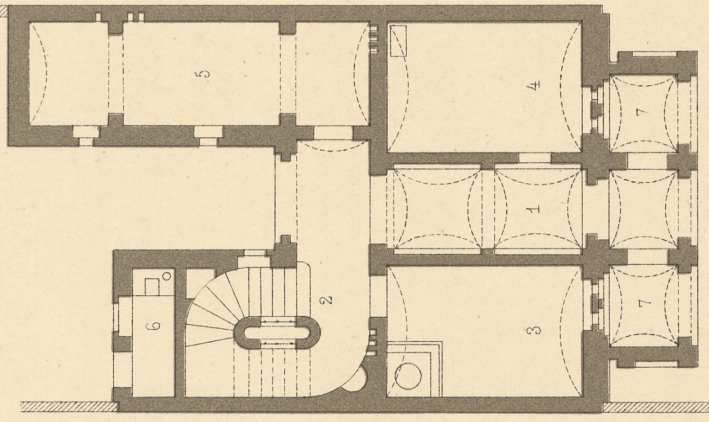


I.ter Stock.



II.ter Stock.

- 1 Eingang
- 2 Aufgang
- 3 Waſchküche
- 4 Hausdiener
- 5 Kellerraume
- 6 Cloſet
- 7 Vorgarten Sitzplaetze
- 8 Vorzimmer
- 9 Wohnzimmer
- 10 Speiſezimmer
- 11 Kuͤche
- 12 Dienerin
- 13 Speiſeſchrank
- 14 Erker Balcon
- 15 Schlafzimmer
- 16 Kinderzimmer
- 17 Badecabinet



Untergelchoſſ.

