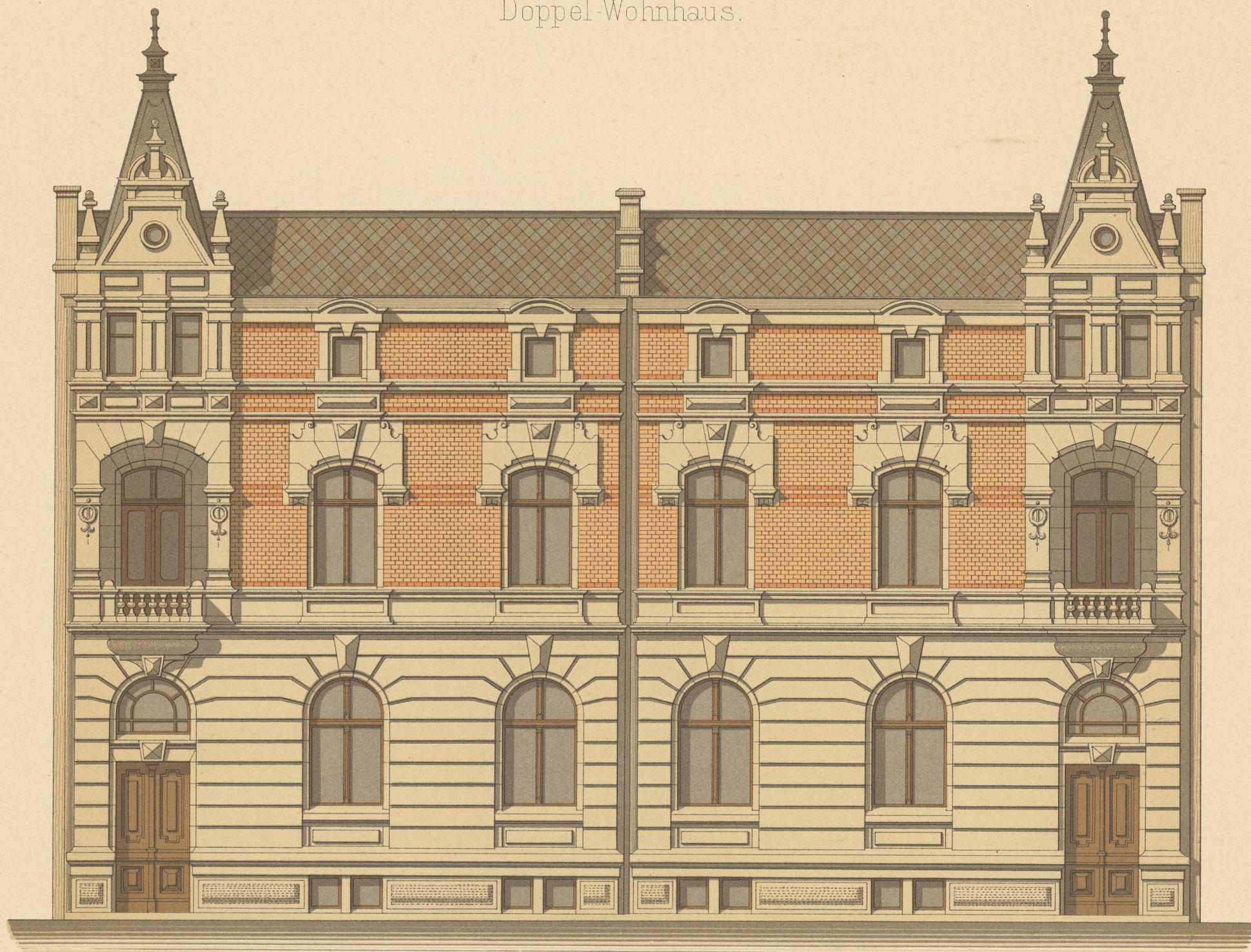
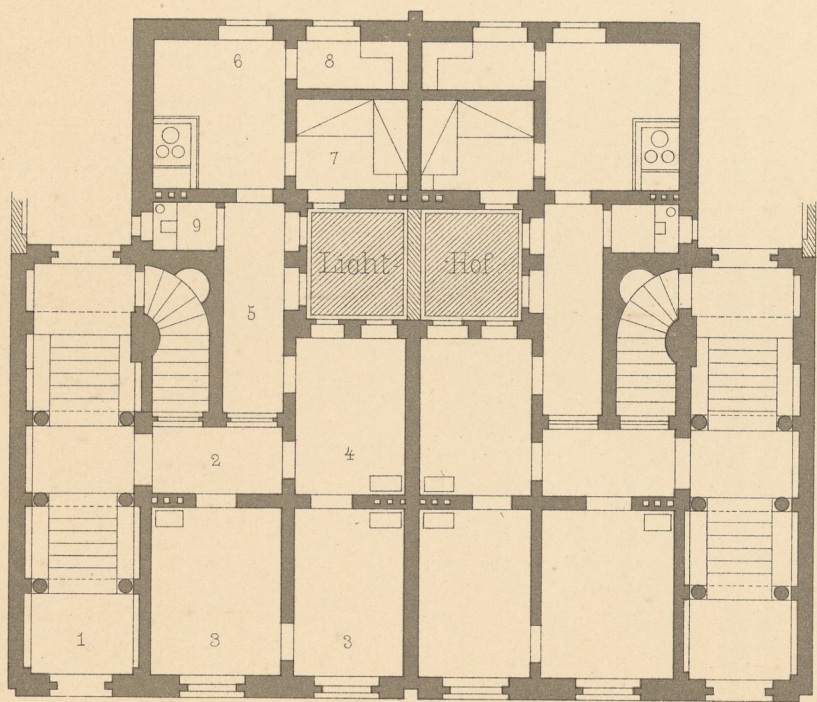


Doppel-Wohnhaus.

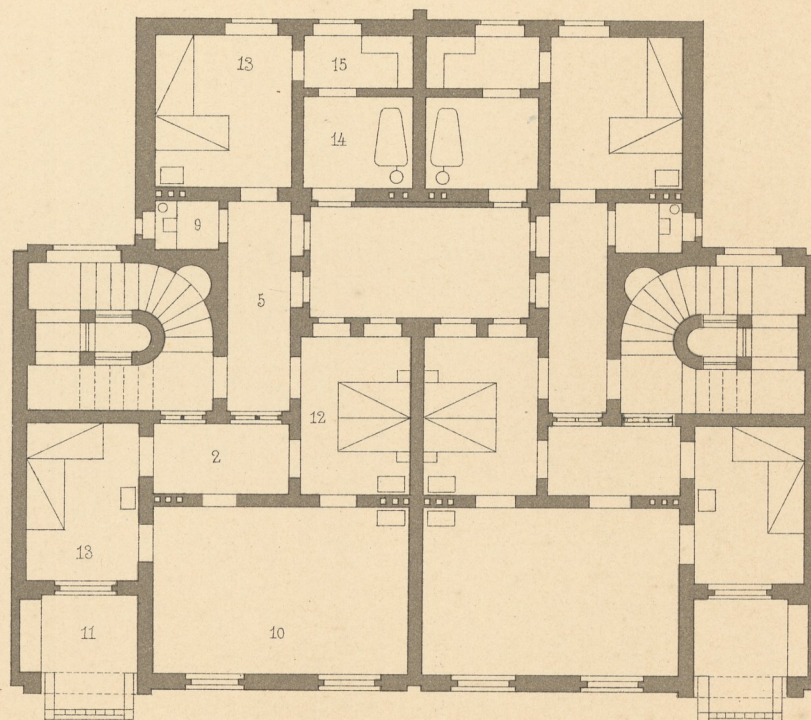


Anficht.

- | | | |
|--------------------|-------------------|-----------------|
| 1 Eingang | 6 Küche | 11 Balconhalle |
| 2 Vorzimmer | 7 Dienerin | 12 Schlafzimmer |
| 3 Wohnzimmer | 8 Speisekammer | 13 Kinderzimmer |
| 4 Speisezimmer | 9 Clofet | 14 Badecabinet |
| 5 Verbindungs-Gang | 10 Familienzimmer | 15 Garderobe |



Erdgeschoss.



1ter Stock.

