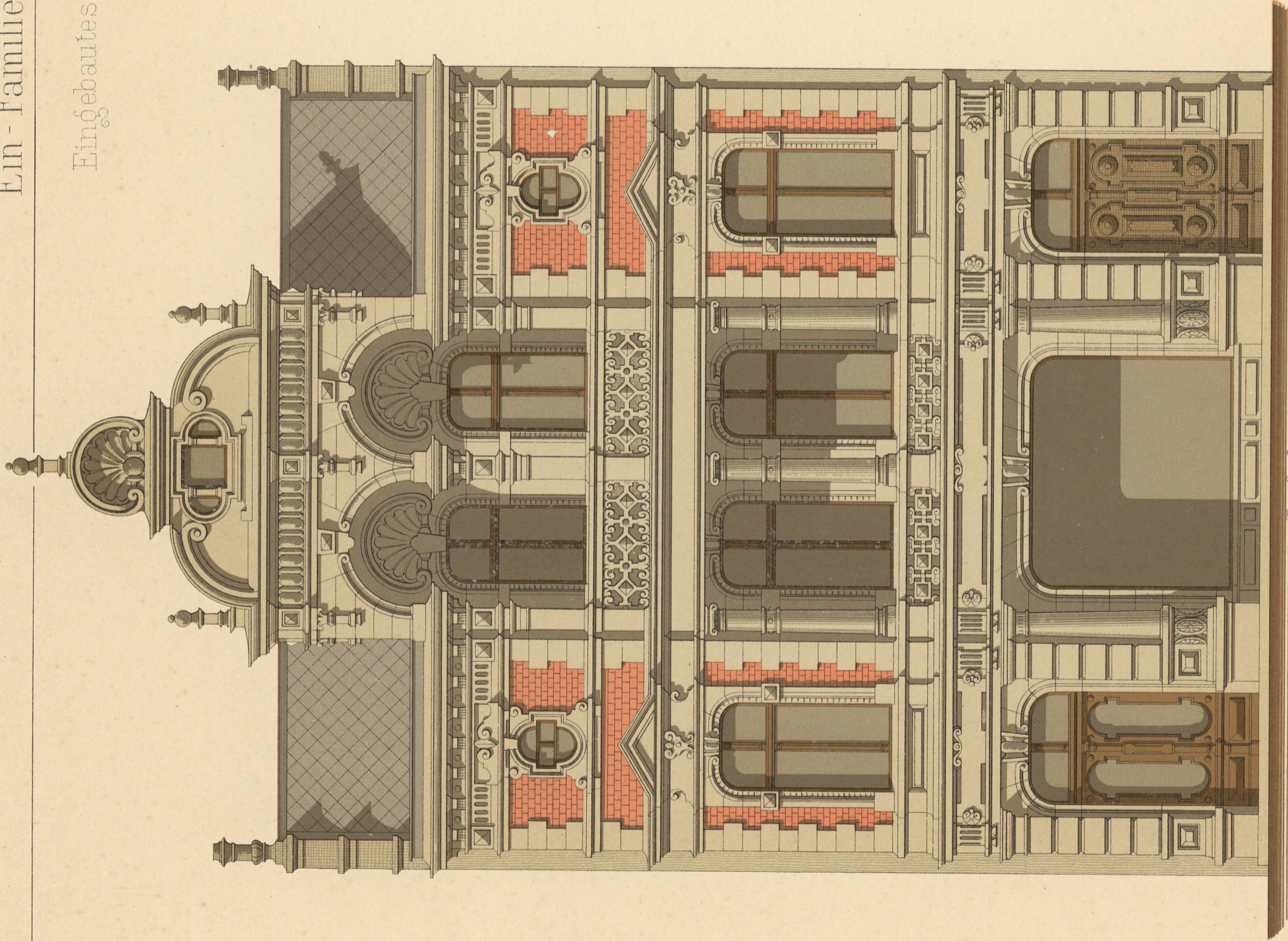
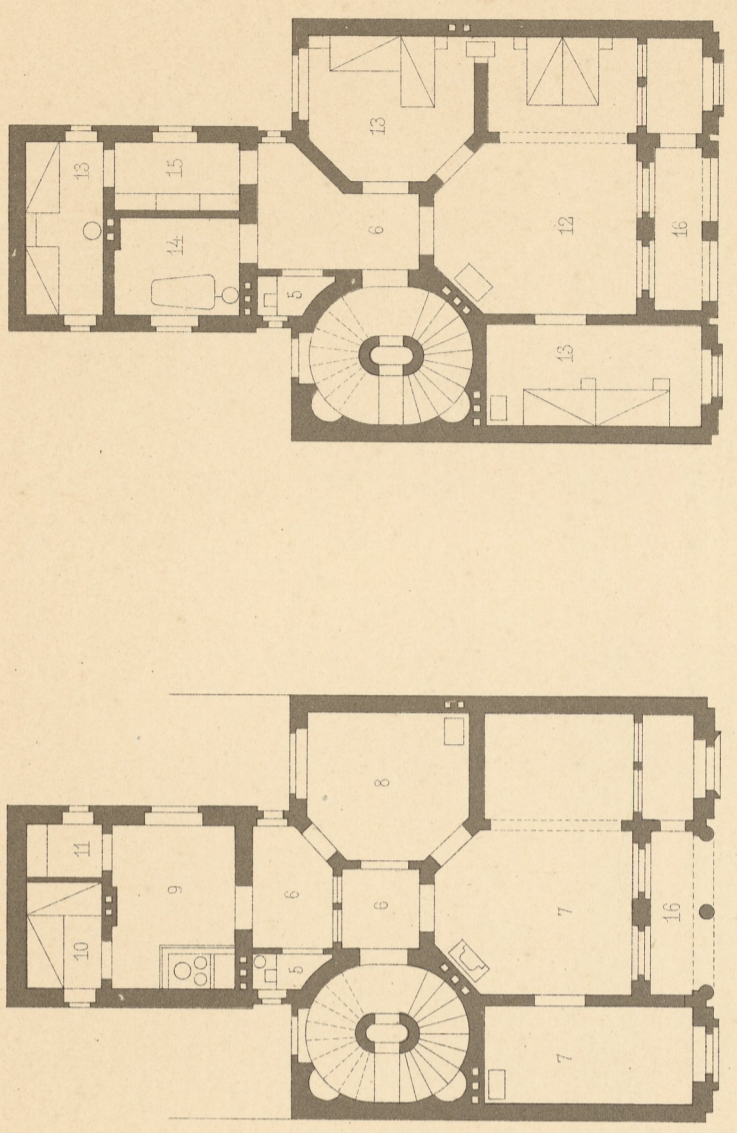


Eingebautes Wohnhaus

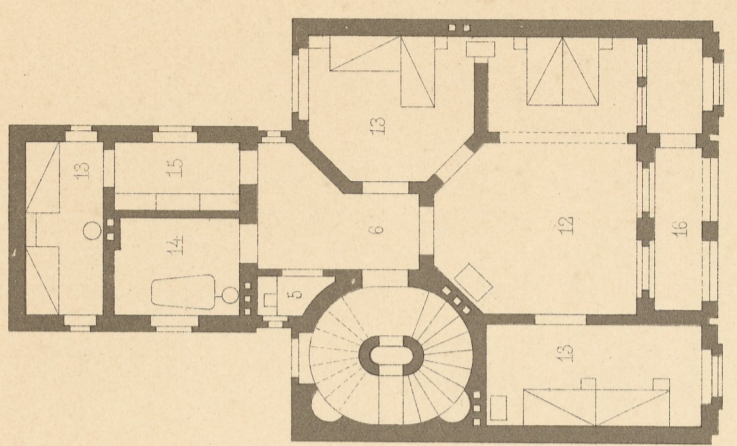


Anlicht.

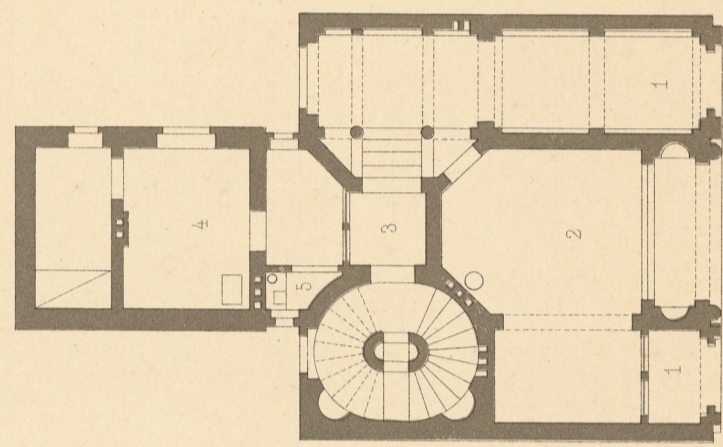
10 20 30 40 50 60 70 80 90 100 meter.



I ter Stock



II ter Stock



Erdgeschoss

10 20 30 40 50 60 70 80 90 100 meter.

- 1 Eingang
- 2 Gesellschaftsraum
- 3 Aufgang
- 4 Hausdiener
- 5 Clofet
- 6 Vorraum
- 7 Wohnzimmer
- 8 Speisezimmer
- 9 Küche
- 10 Dienerin
- 11 Speisekammer
- 12 Schlafzimmer
- 13 Kinderzimmer
- 14 Badecabinet
- 15 Passage, Garderobe
- 16 Balconhülle