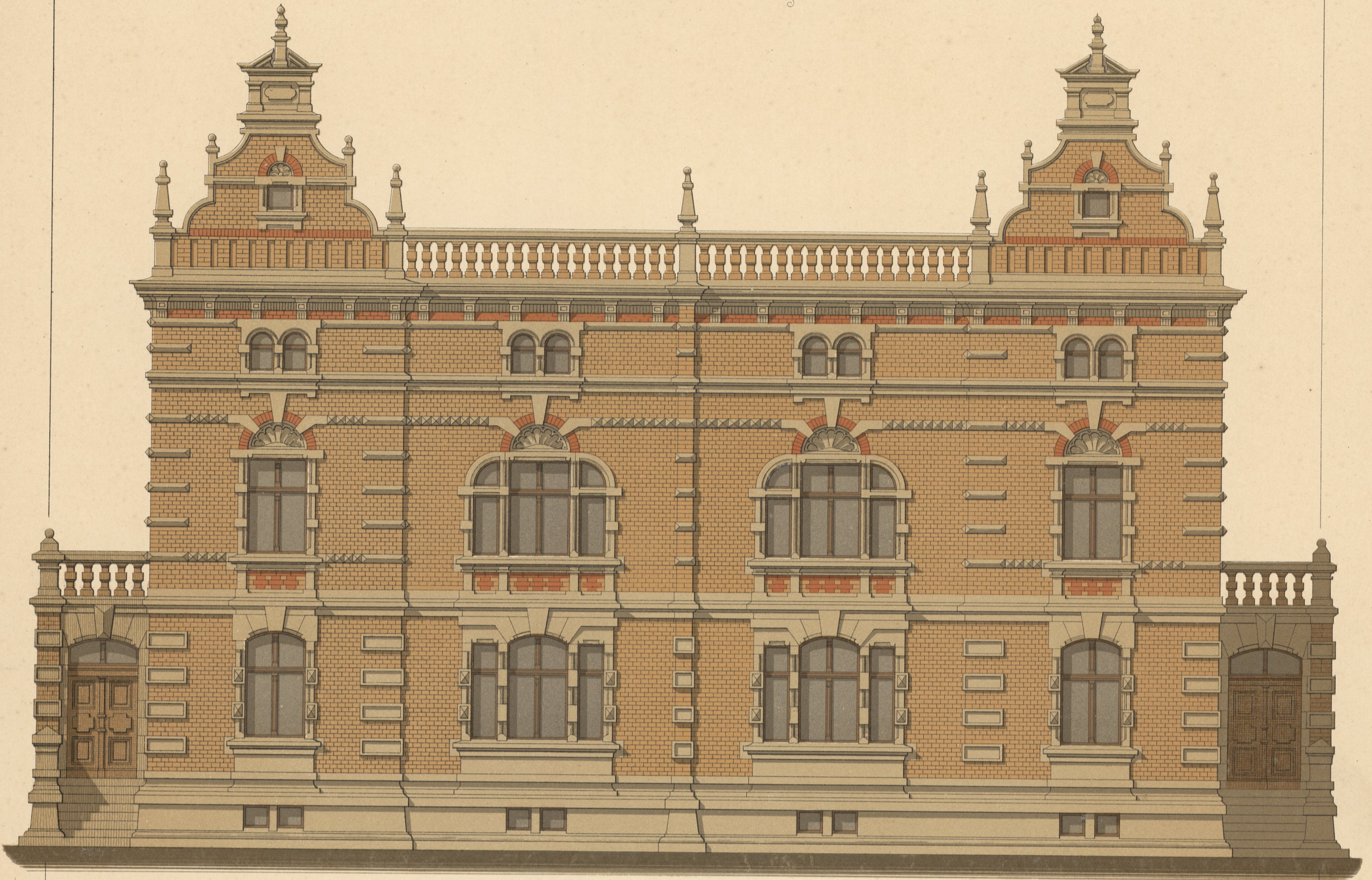
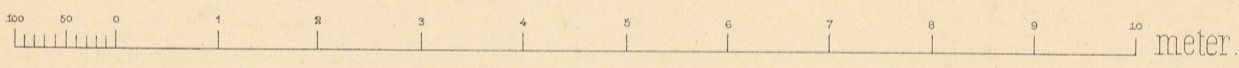


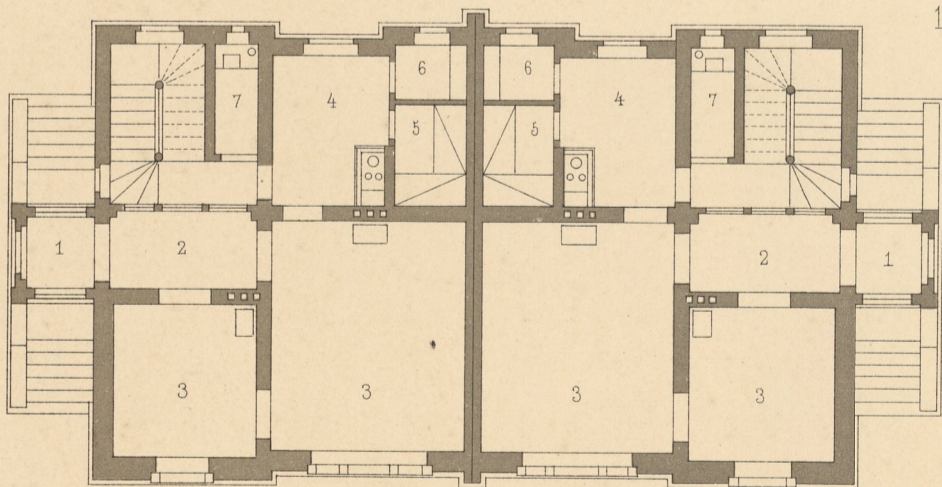
Doppelwohnhaus an einer Vorgartenfrasse.



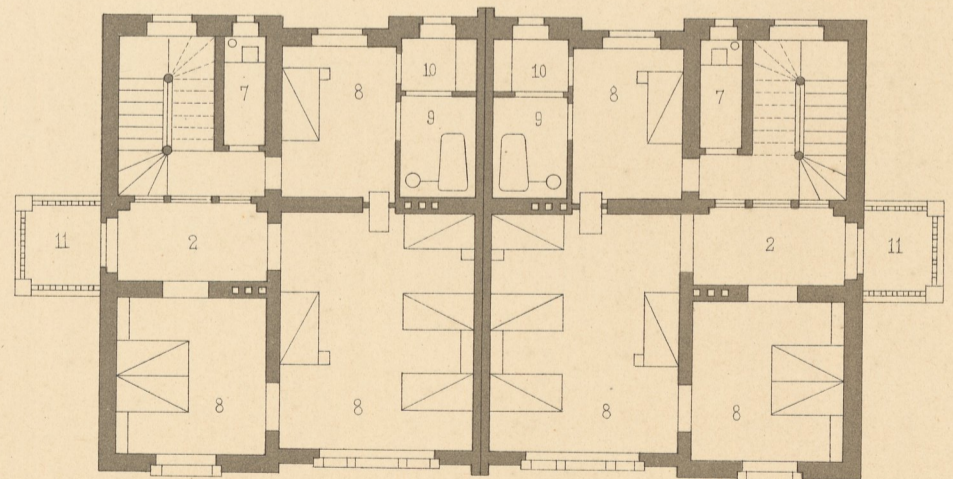
Anficht



- 1 Eingang
- 2 Vorzimmer
- 3 Wohnzimmer
- 4 Küche
- 5 Dienerin
- 6 Speisekammer
- 7 Clofet
- 8 Schlafzimmer
- 9 Badecabinet
- 10 Garderobe
- 11 Balcon



Erdgeschoss.



1ter Stock.

