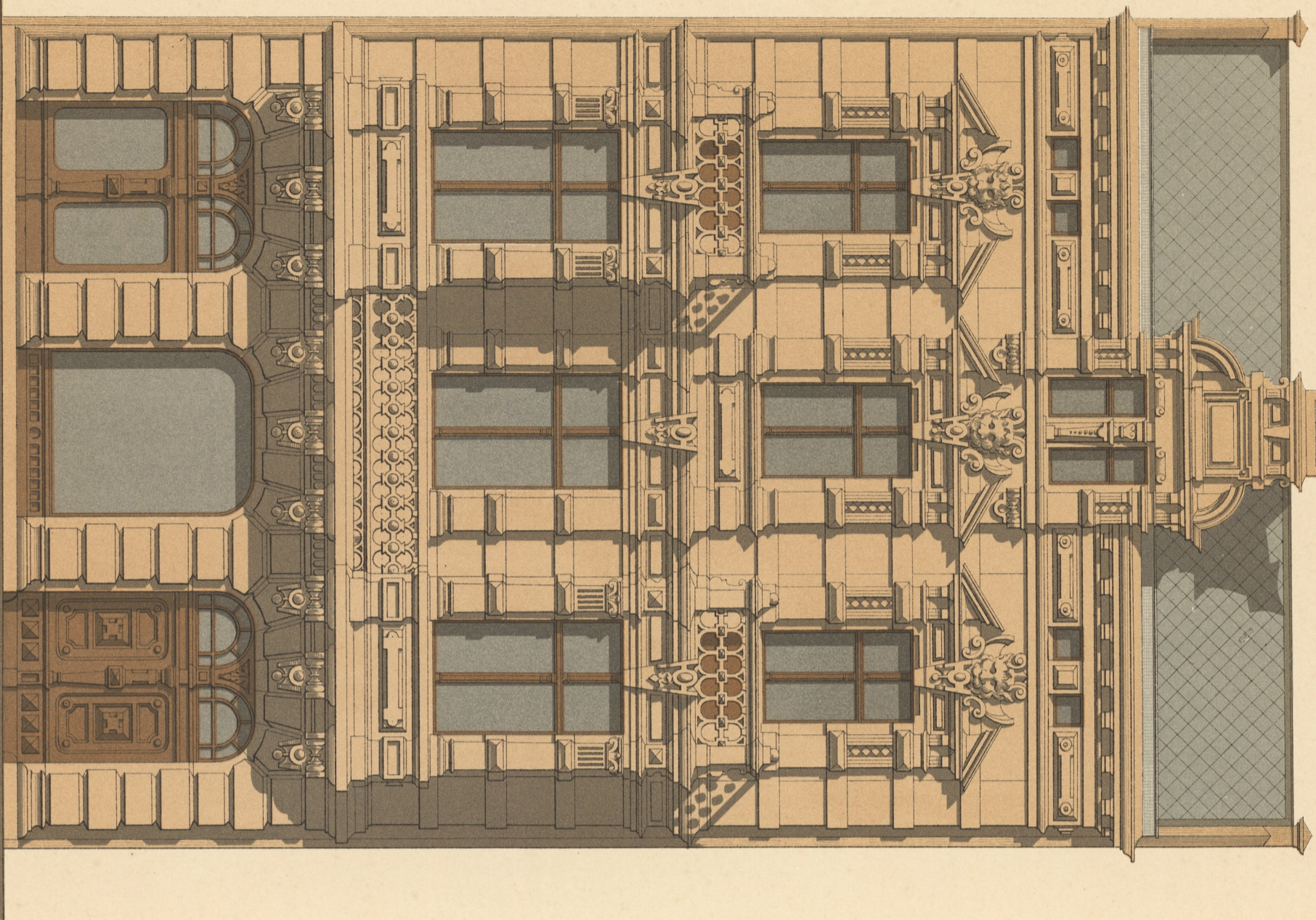
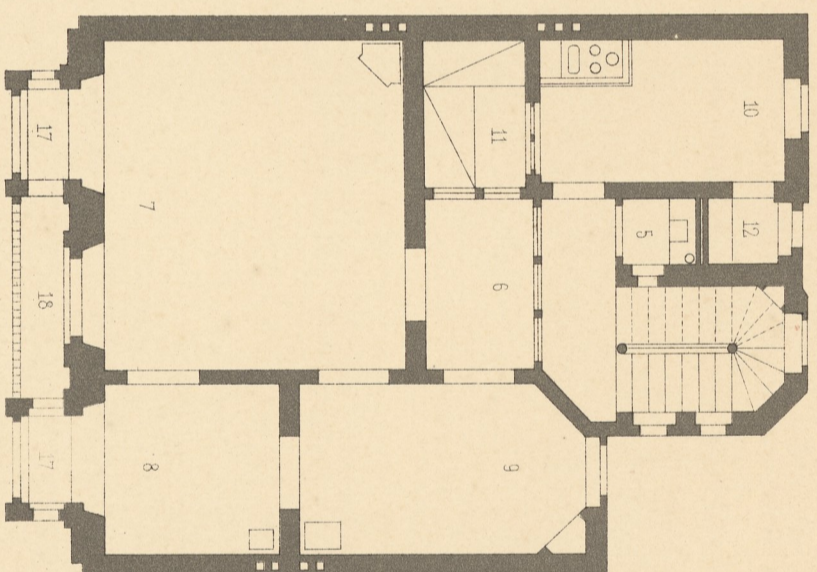


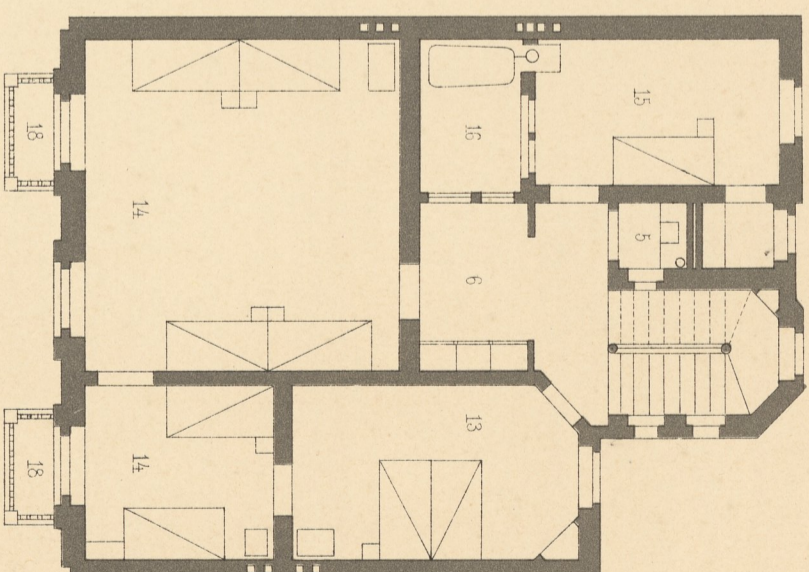
Eingebautes Wohnhaus



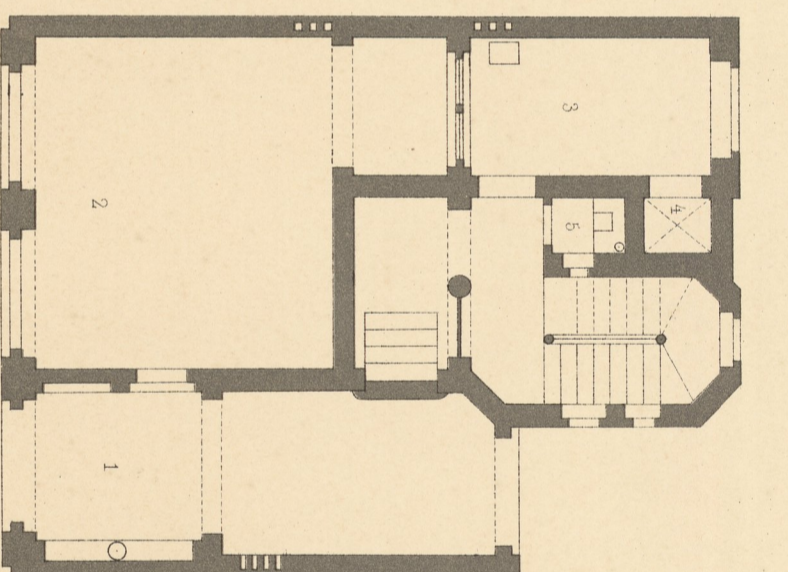
Anficht. 10 meter.



I.ter Stock



II.ter Stock



Erdgeschoss.

- 1 Einfahrt
- 2 Geheaefts - Lokal
- 3 Comptoir
- 4 Kafferraum
- 5 Clolet
- 6 Vorzimmer
- 7 Salon
- 8 Wohnzimmer
- 9 Spelezimmer
- 10 Kuche
- 11 Maedchenzimmer
- 12 Spelekammer
- 13 Schlafzimmer
- 14 Kinderzimmer
- 15 Erziehern
- 16 Badecabinet
- 17 Erker
- 18 Balcon

10 meter.