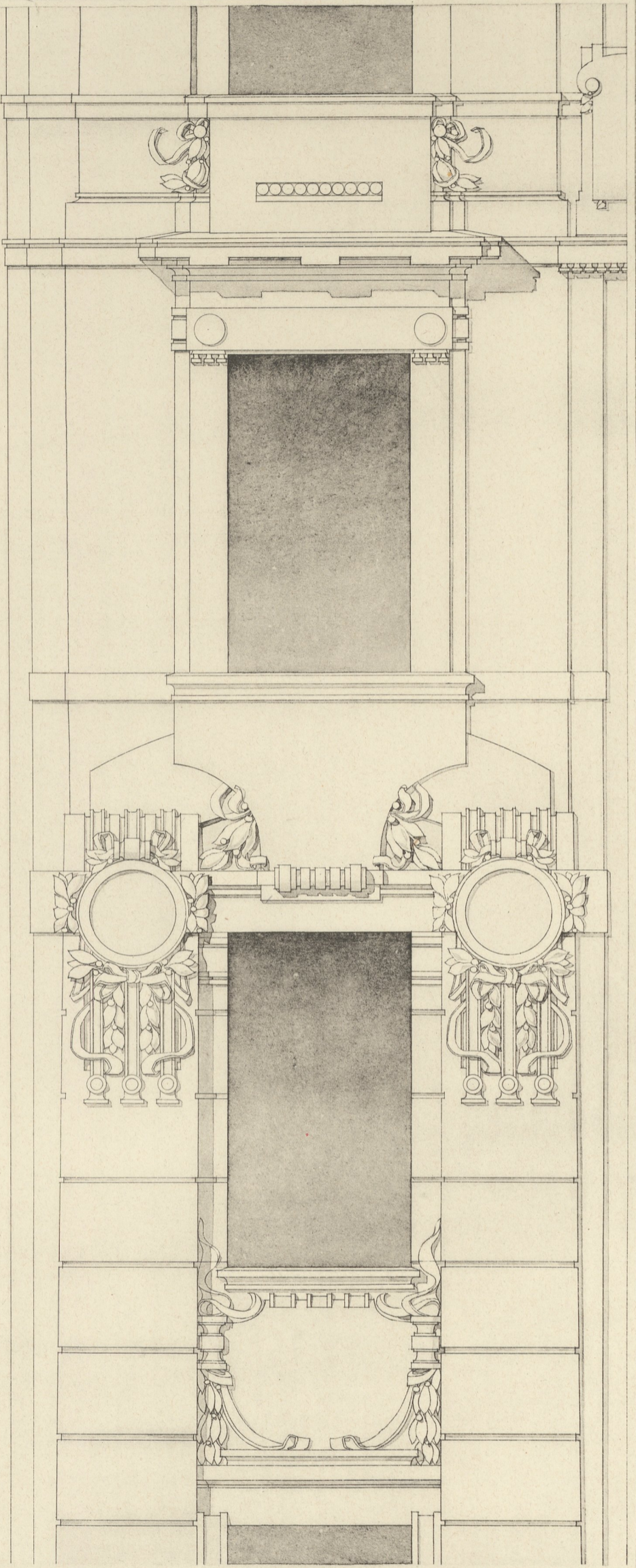
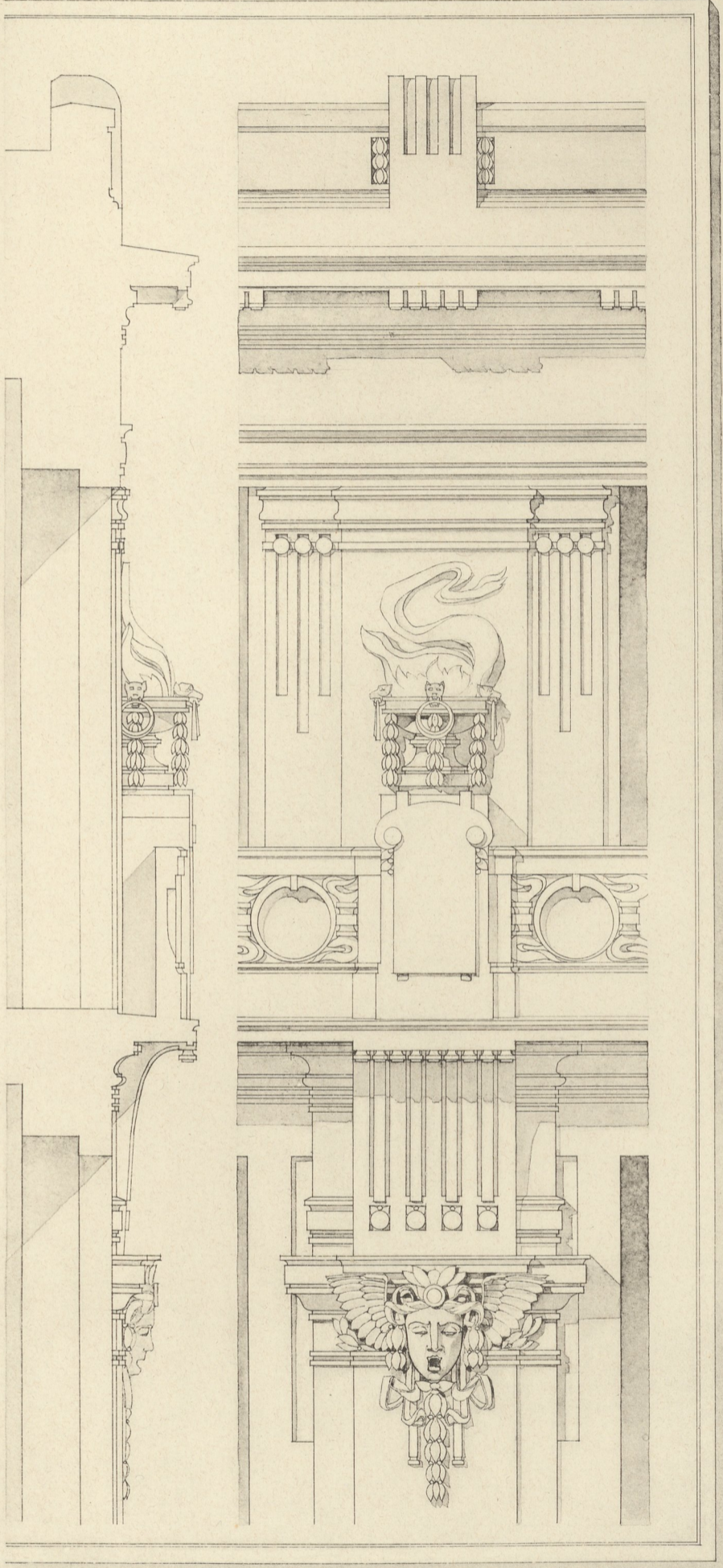
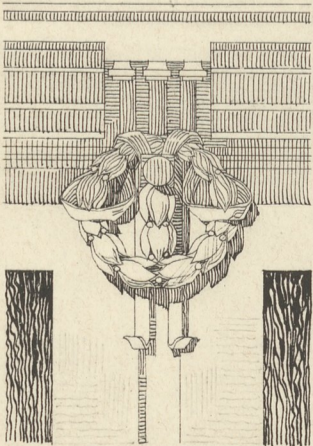


HAVS DES STÄDTISCHEN
BÜRGERLADEFONDS

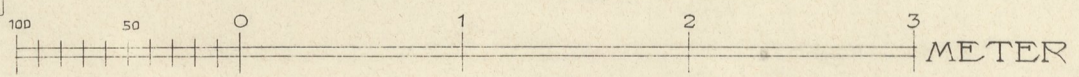


DETAILS VOM
III. UND IV. STOCK

EIN THEIL DES RISALITES



Siedler



Architekt (C. M.) Albert H. Pecha.

VON DER FAÇADE DES HAUSES
WOLLZEILE, ECKE RIEMERGASSE.