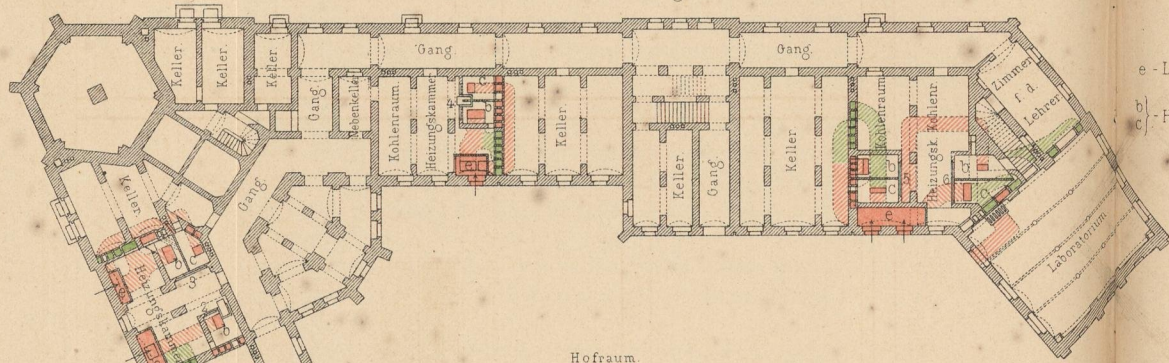


LEIBNITZ-REALSCHULE ZU HANNOVER.

Grundriss des Kellergeschosses.

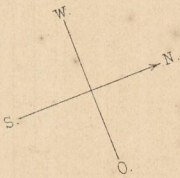


Hofraum.

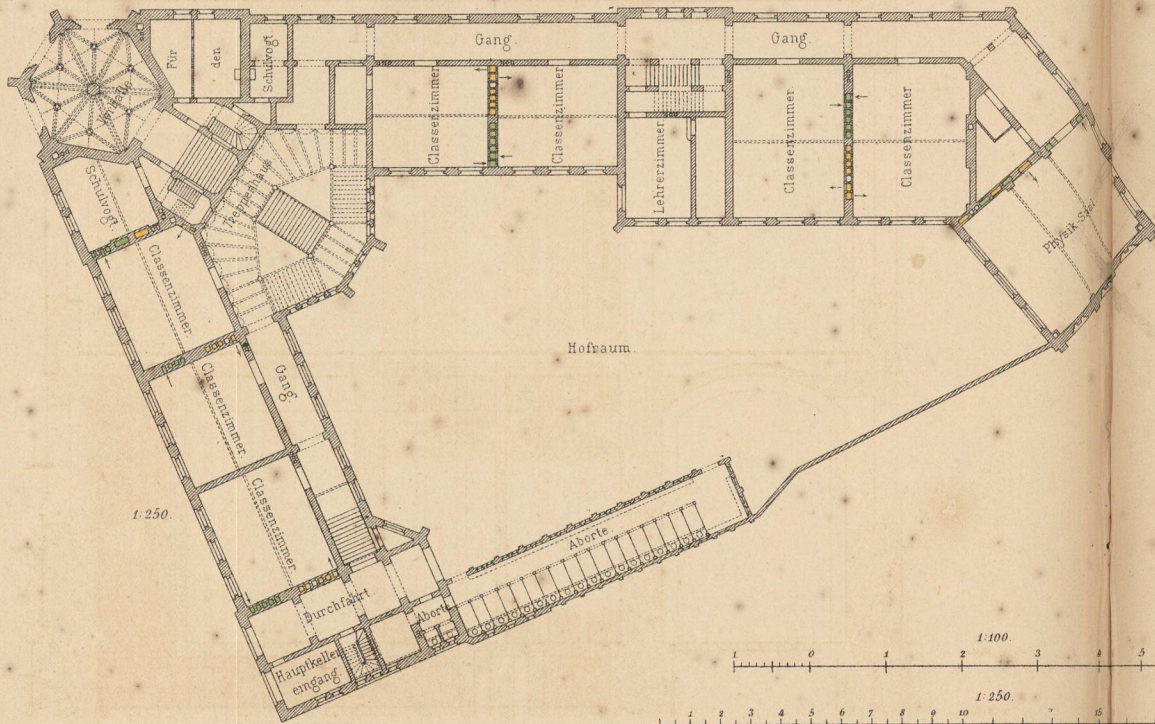
e - Luftkammern
b
c - Heizkammern.

frische, kalte Luft
warme Luft
gebrauchte Luft

1:250



Grundriss des Erdgeschosses.



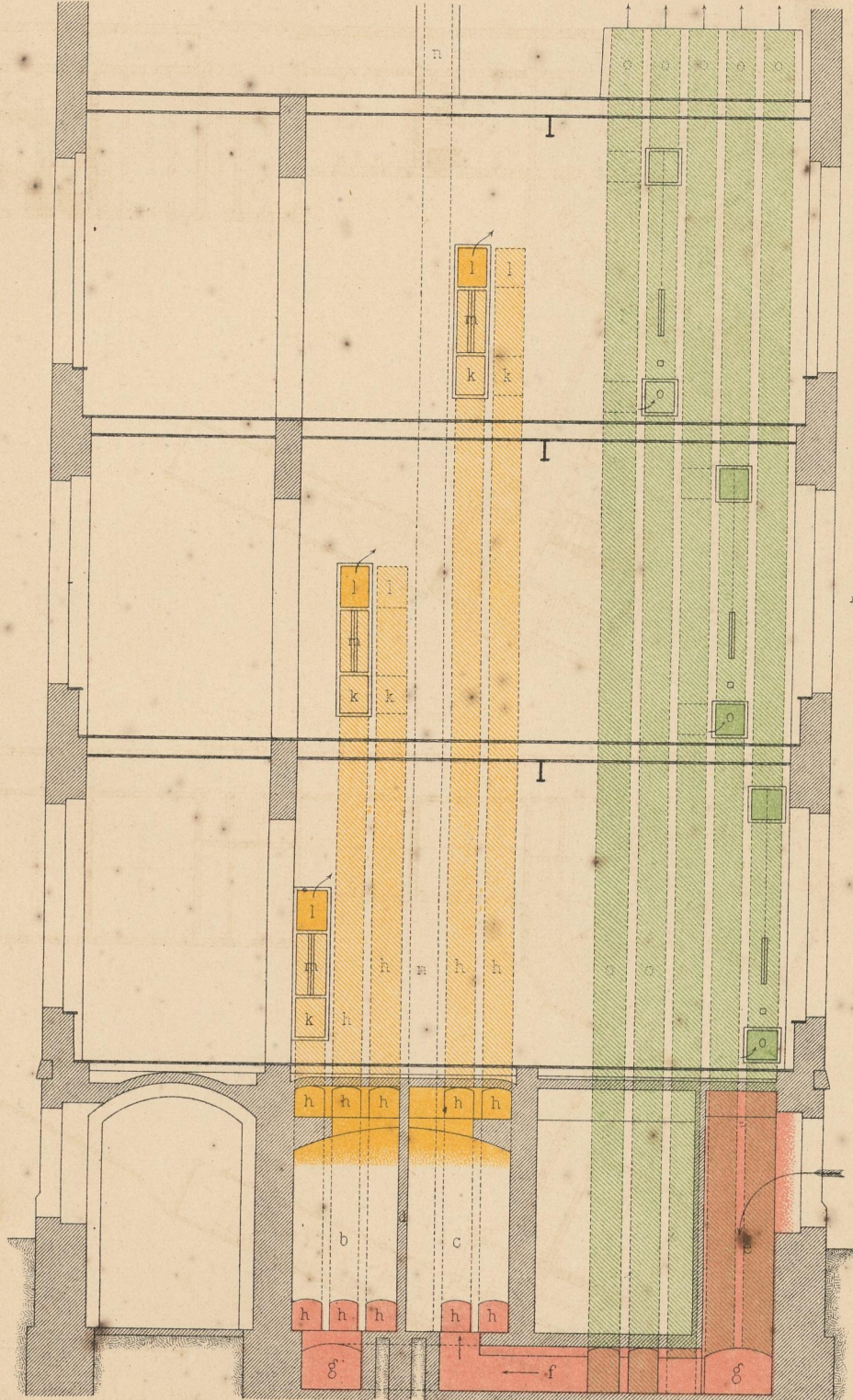
Hofraum

1:100

1:250

0 1 2 3 4 5 6 Meter
0 1 2 3 4 5 6 7 8 9 10 20 Meter

Querschnitt.



1:100