

Fig. 4a.

1:15

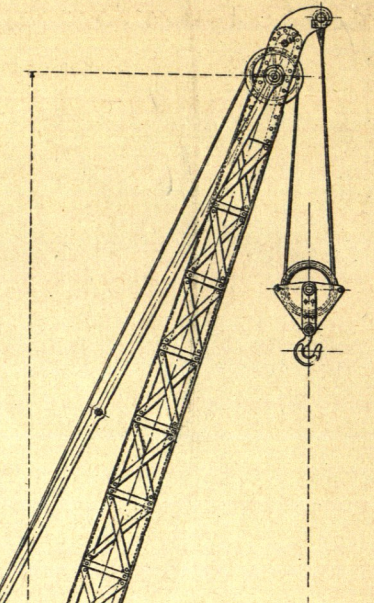
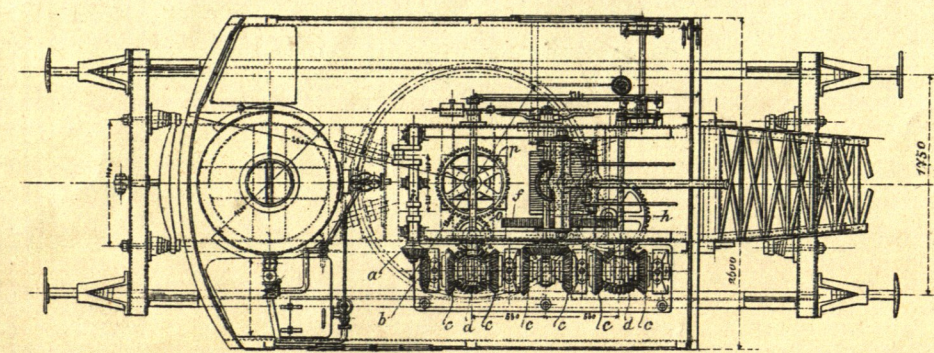
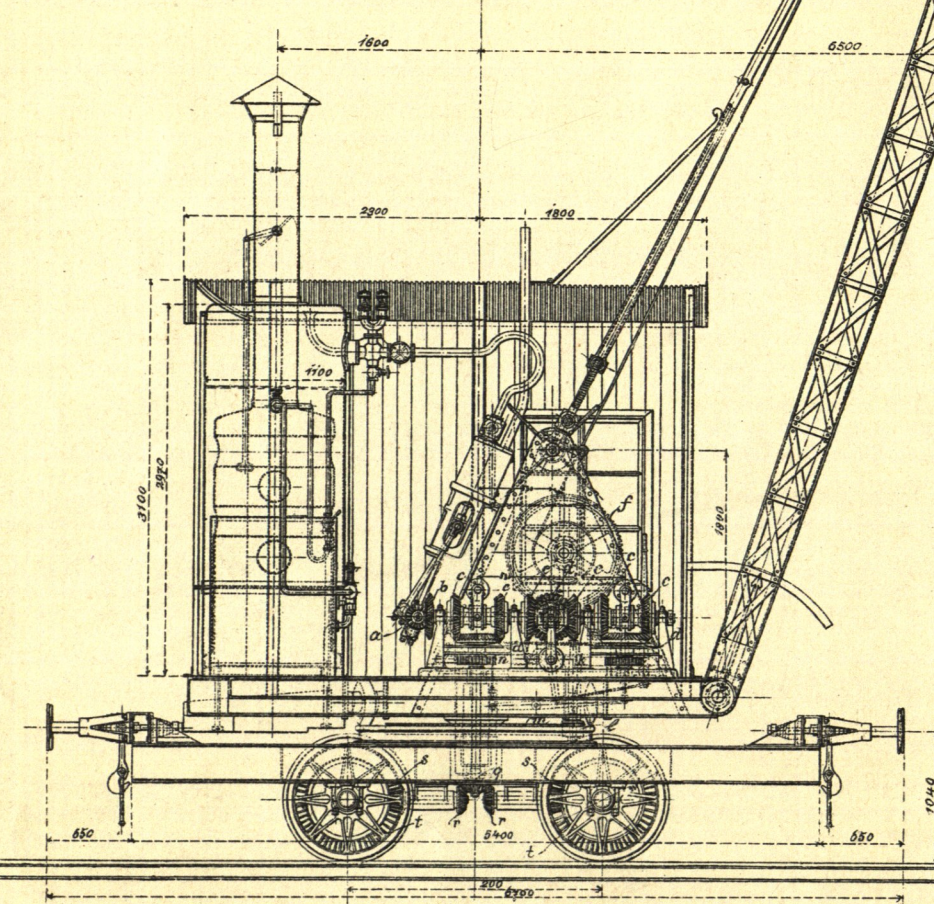
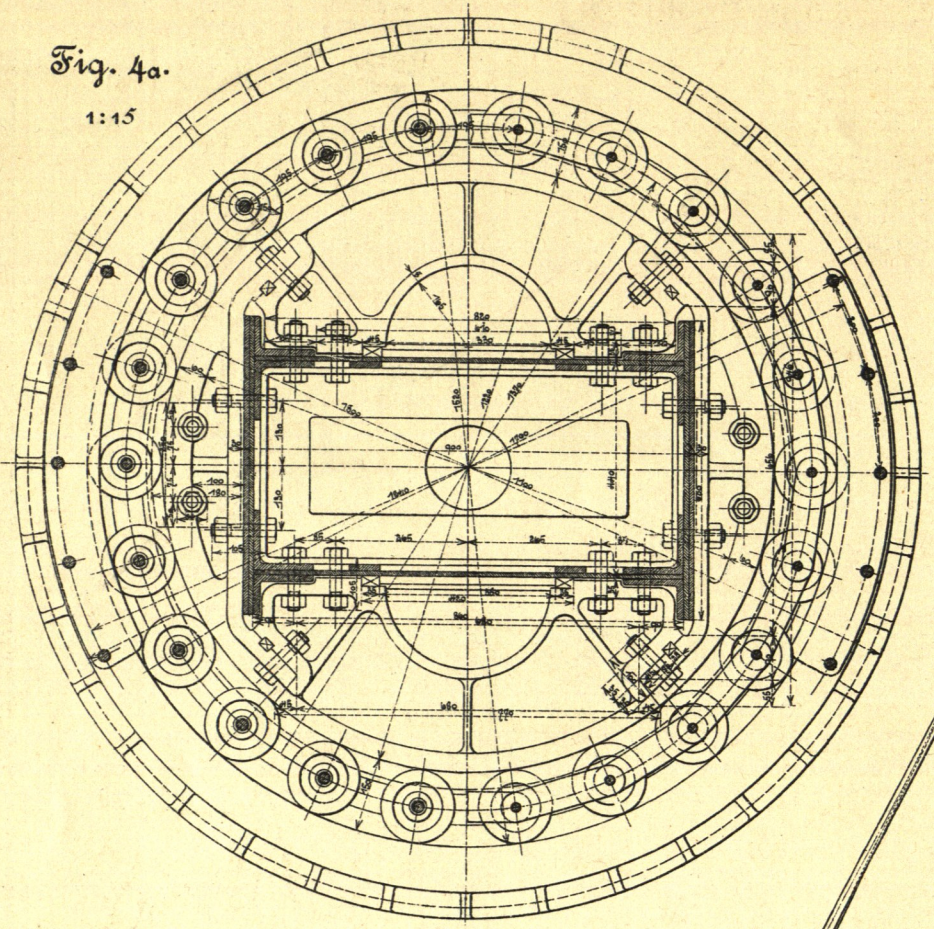
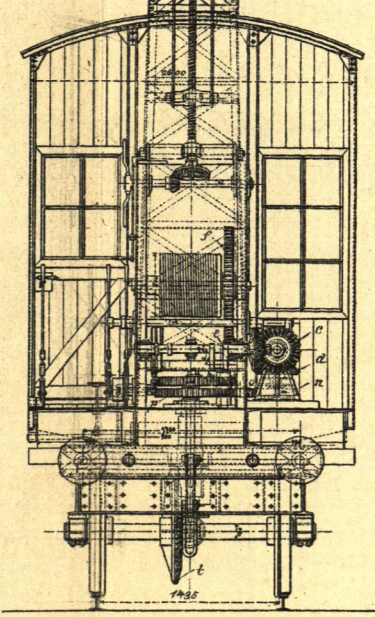


Fig. 1.

Fahrbarer Dampfdrehkran  
von 3000 kg Trgkr.  
bei 6,5 m Ausladung  
v. Dampfessel & Gasometerf.,  
Braunschweig

1:60

Hubhöhe in m.	Tragfähigkeit in kg	Hubhöhe in m.
2,50	3000	15,00
3,00	2500	14,00
3,50	2000	13,00
4,00	1500	12,00
4,50	1000	11,00
5,00	500	10,00



Bootskran von 8500 kg Trgkr., 8,6 m Ausladung  
v. Bechem & Kestman, Duisburg

1:75

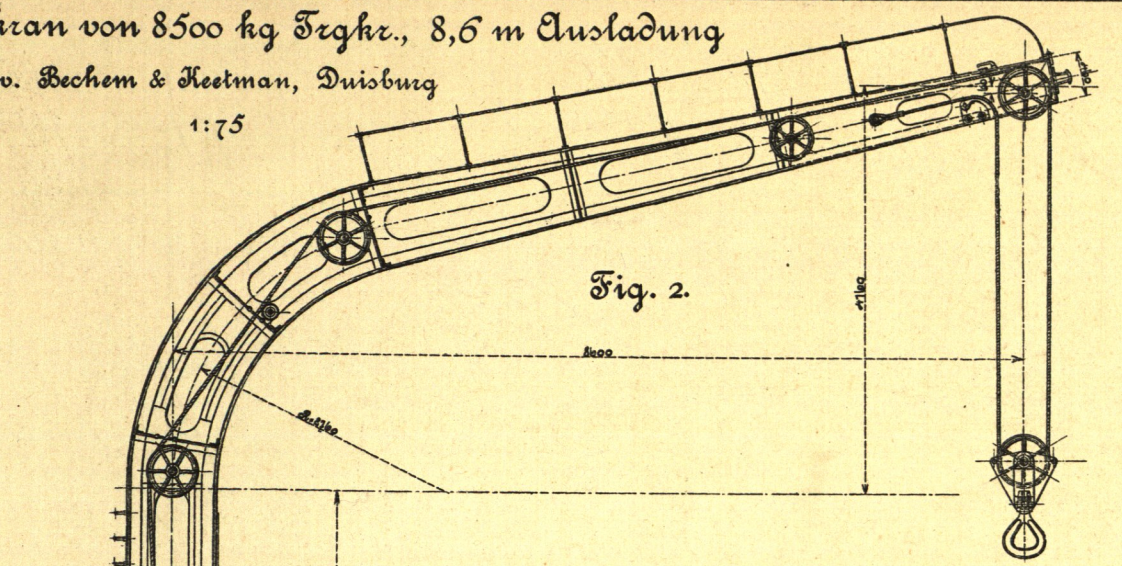


Fig. 2.

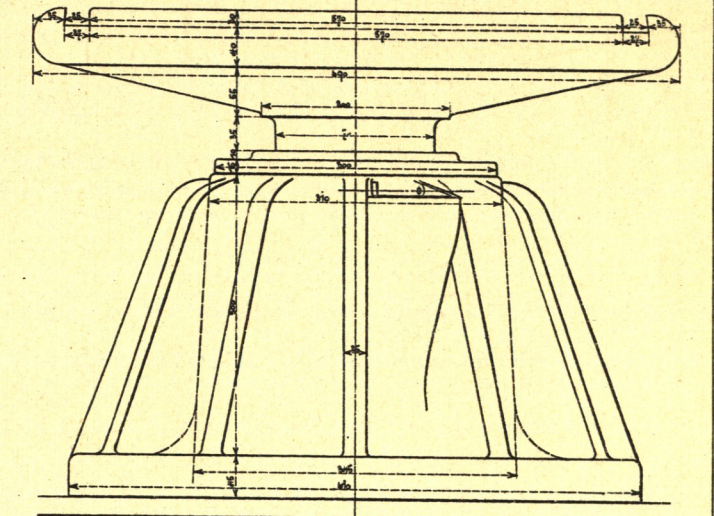


Fig. 3.

1:8

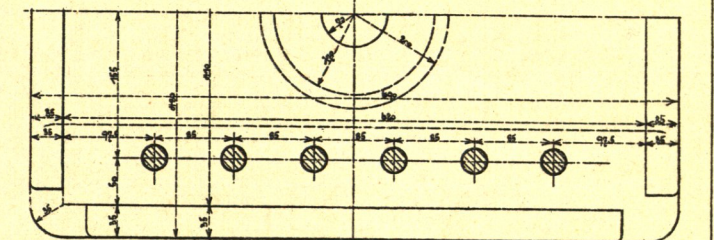
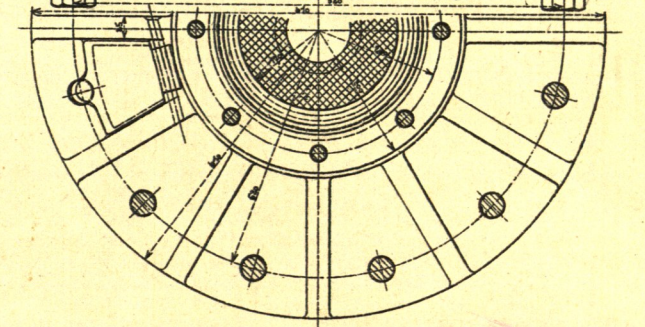
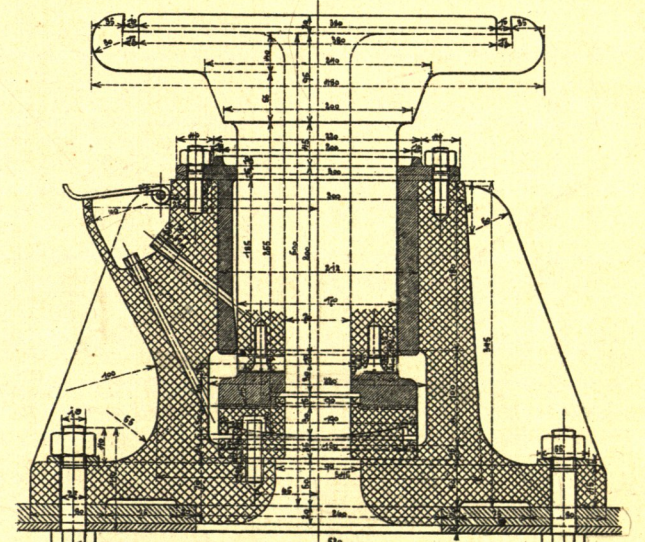
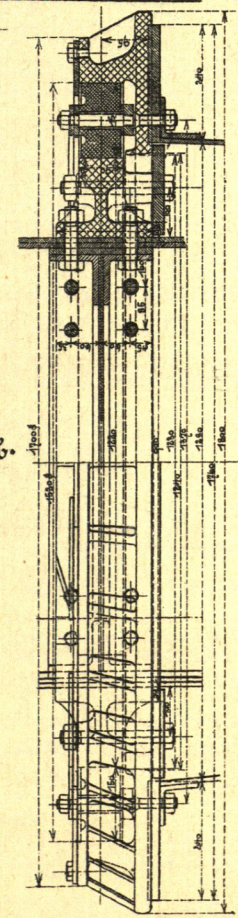


Fig. 4b.

1:15



Bootskran (Bechem & Kestman) Spindel 10 cm, 2 in 10 cm, 4 in 10 cm.

Becken			Becken			Becken		
Rad	z	d	Rad	z	d	Rad	z	d
a. Rad	180	100	a. Rad	180	100	a. Rad	180	100
b. Rad	240	130	b. Rad	240	130	b. Rad	240	130
c. Rad	360	200	c. Rad	360	200	c. Rad	360	200
d. Rad	480	270	d. Rad	480	270	d. Rad	480	270
e. Rad	600	340	e. Rad	600	340	e. Rad	600	340
f. Rad	720	410	f. Rad	720	410	f. Rad	720	410
g. Rad	840	480	g. Rad	840	480	g. Rad	840	480
h. Rad	960	550	h. Rad	960	550	h. Rad	960	550
i. Rad	1080	620	i. Rad	1080	620	i. Rad	1080	620
j. Rad	1200	690	j. Rad	1200	690	j. Rad	1200	690
k. Rad	1320	760	k. Rad	1320	760	k. Rad	1320	760
l. Rad	1440	830	l. Rad	1440	830	l. Rad	1440	830
m. Rad	1560	900	m. Rad	1560	900	m. Rad	1560	900
n. Rad	1680	970	n. Rad	1680	970	n. Rad	1680	970
o. Rad	1800	1040	o. Rad	1800	1040	o. Rad	1800	1040
p. Rad	1920	1110	p. Rad	1920	1110	p. Rad	1920	1110
q. Rad	2040	1180	q. Rad	2040	1180	q. Rad	2040	1180
r. Rad	2160	1250	r. Rad	2160	1250	r. Rad	2160	1250
s. Rad	2280	1320	s. Rad	2280	1320	s. Rad	2280	1320
t. Rad	2400	1390	t. Rad	2400	1390	t. Rad	2400	1390
u. Rad	2520	1460	u. Rad	2520	1460	u. Rad	2520	1460
v. Rad	2640	1530	v. Rad	2640	1530	v. Rad	2640	1530
w. Rad	2760	1600	w. Rad	2760	1600	w. Rad	2760	1600
x. Rad	2880	1670	x. Rad	2880	1670	x. Rad	2880	1670
y. Rad	3000	1740	y. Rad	3000	1740	y. Rad	3000	1740
z. Rad	3120	1810	z. Rad	3120	1810	z. Rad	3120	1810