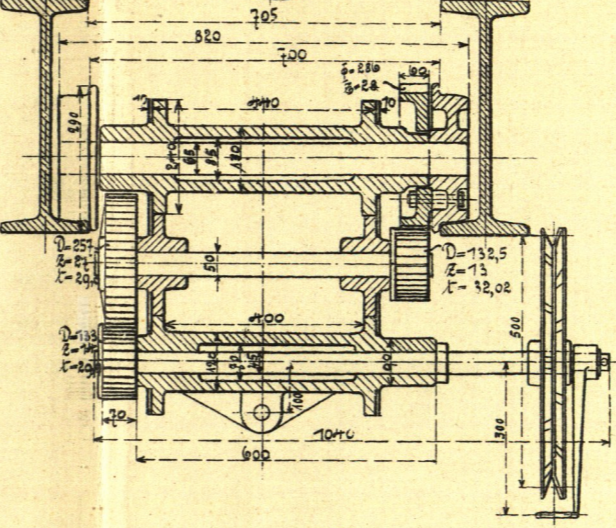
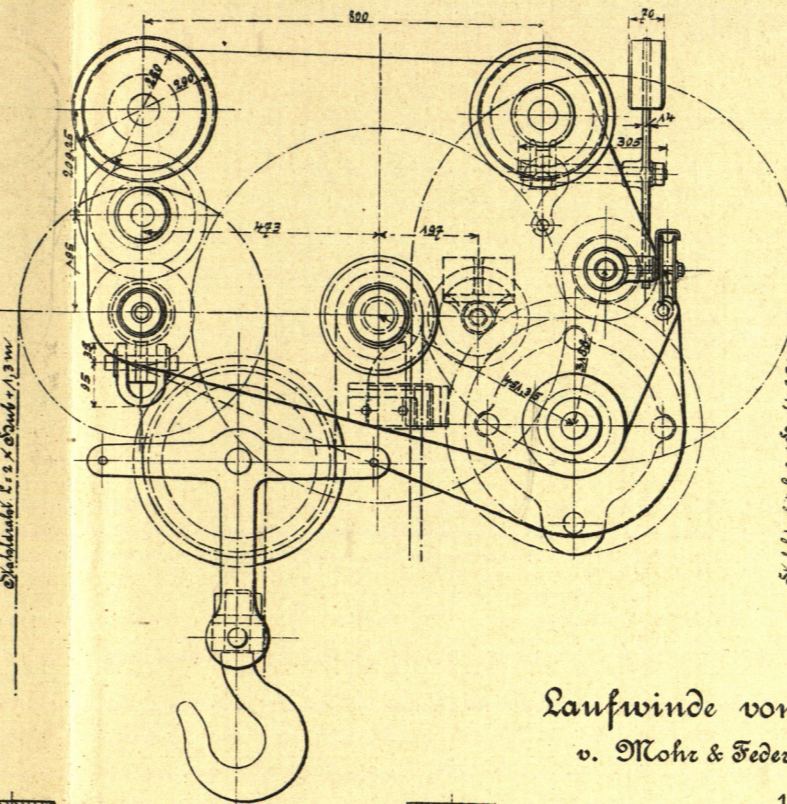
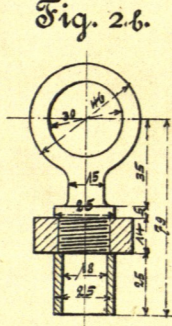
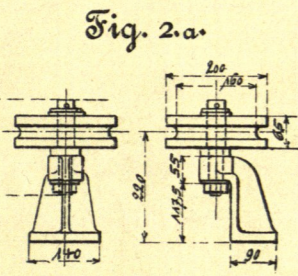
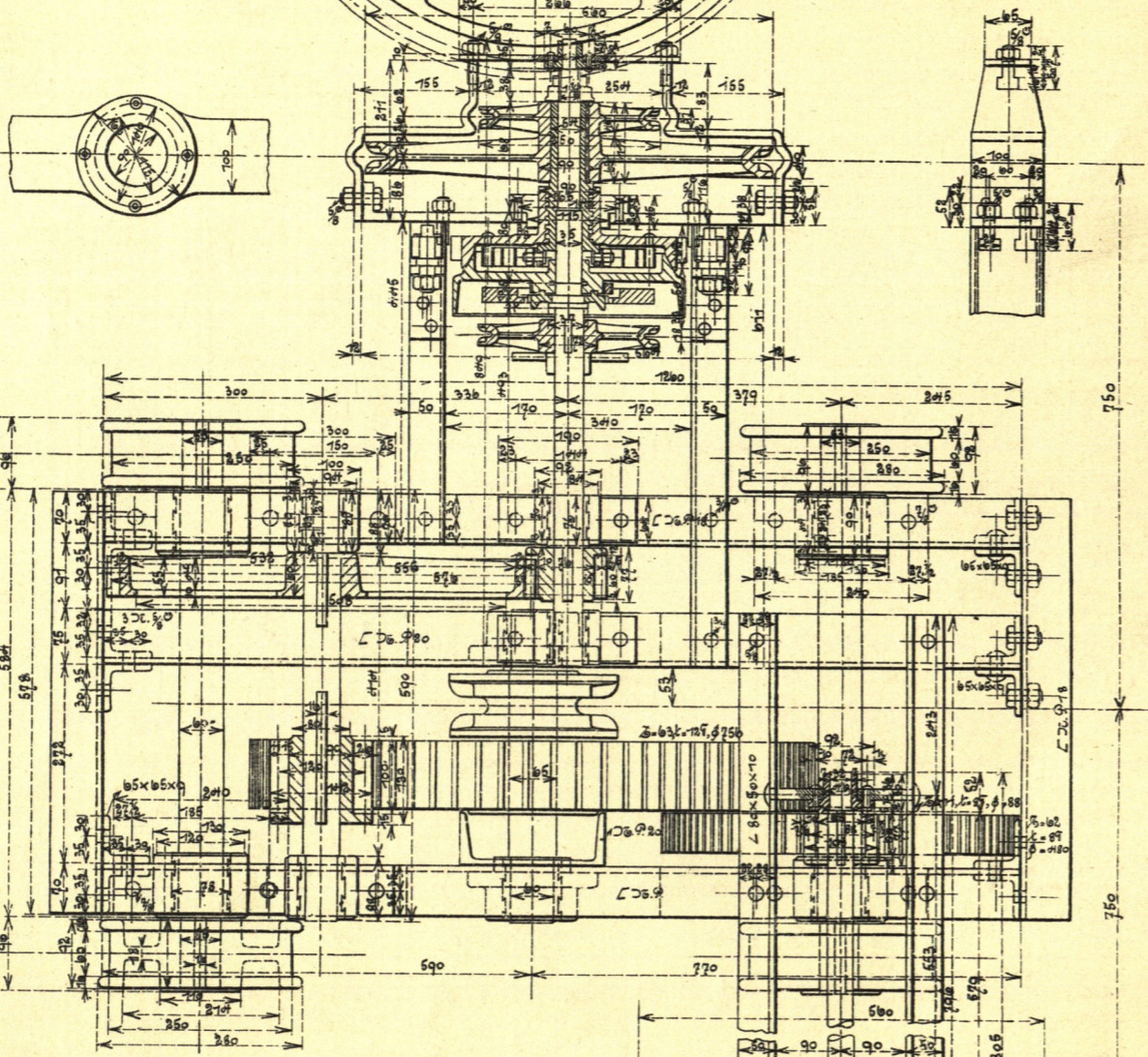
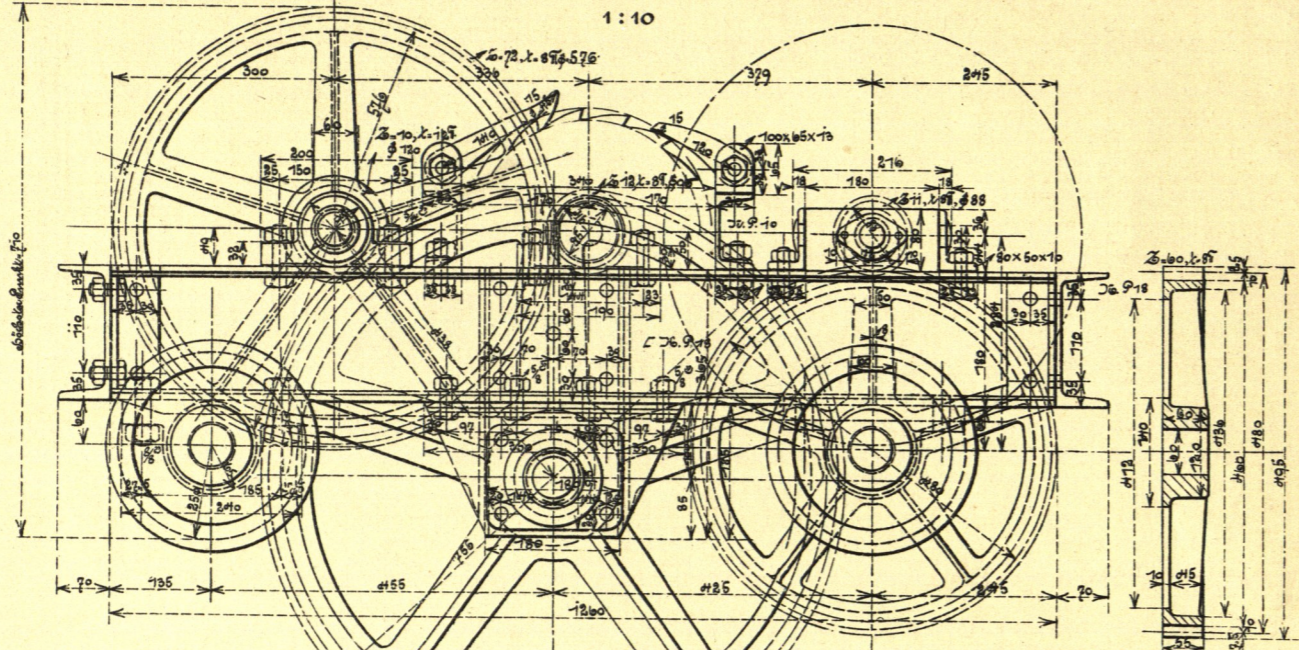
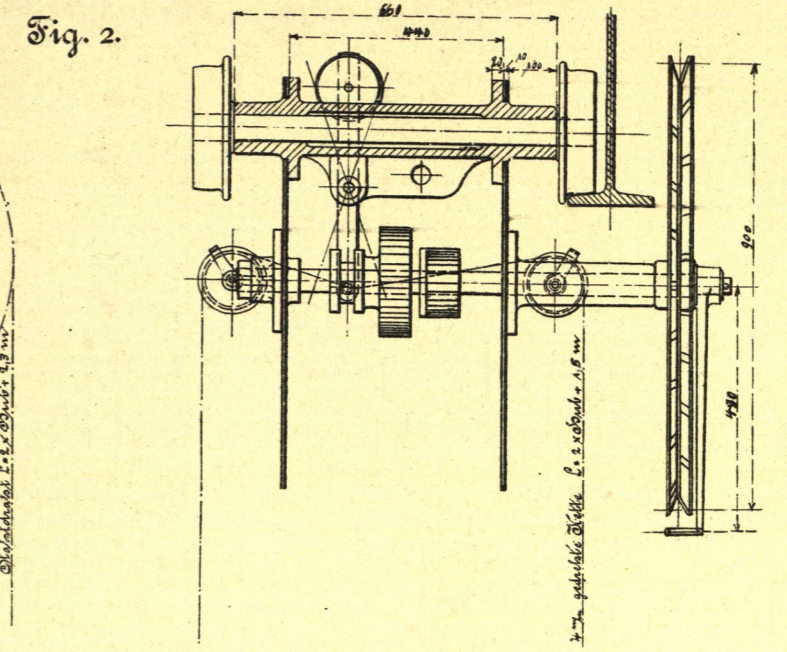


Fig. 1. Laufwinde von 7500 kg Tragkr.  
v. de Fries & Co., Düsseldorf



Laufwinde von 6000 kg Tragkr.  
v. Mohr & Federhaff, Mannheim



Laufwinde von 2000 kg Tragkr.

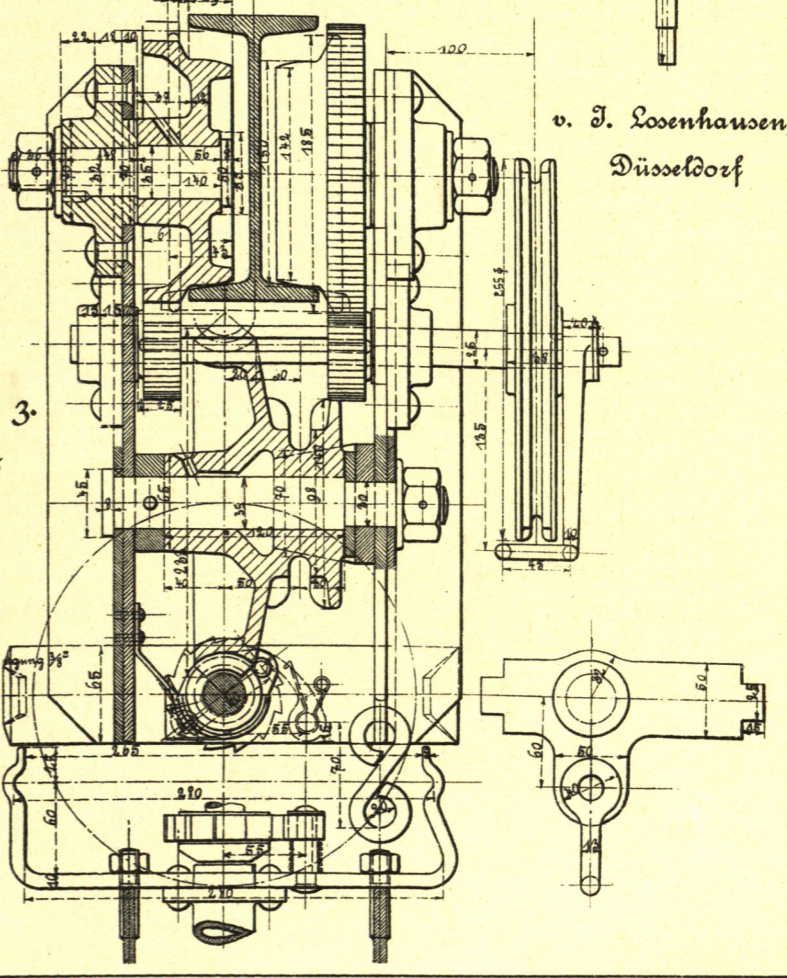
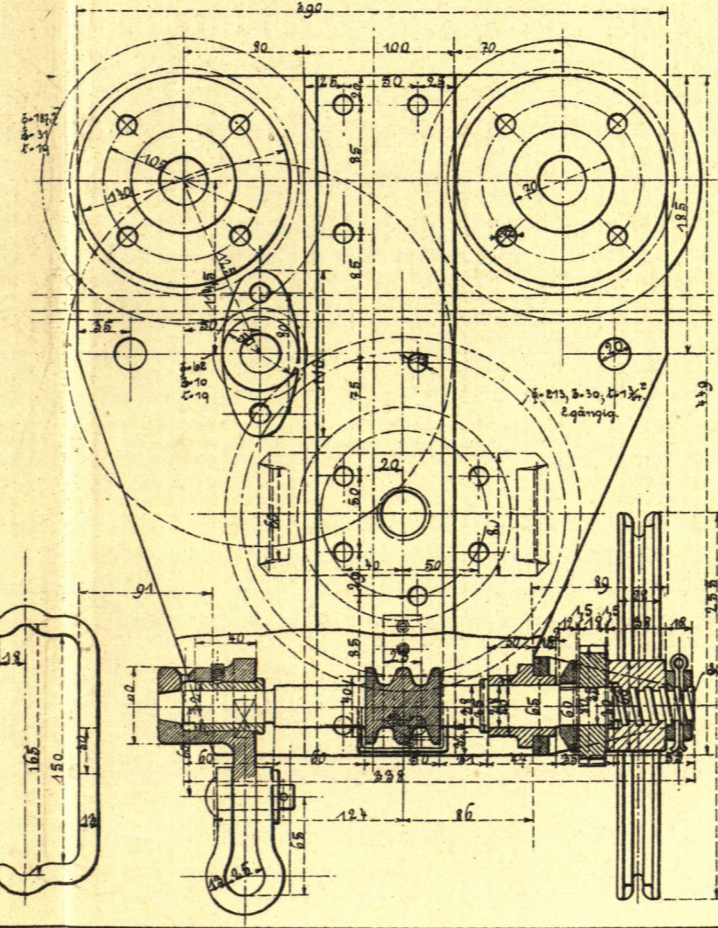


Fig. 3.  
1:5

v. J. Loosenhausen,  
Düsseldorf