

Fig. 1.

Aufzugwinde von 750 kg Tragkr.  
v. Mohr & Federhaff, Mannheim

3:50

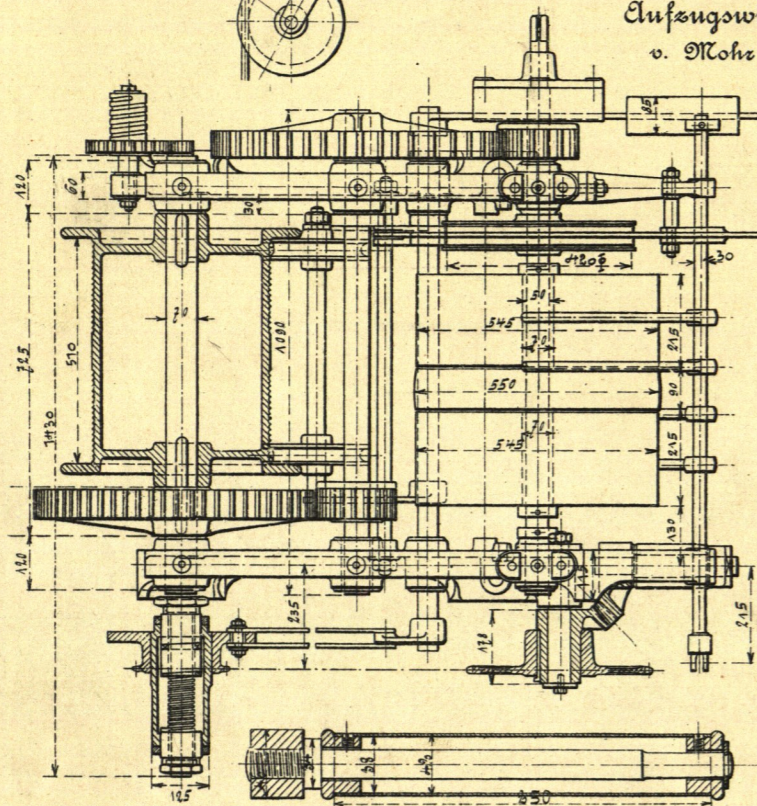


Fig. 5.

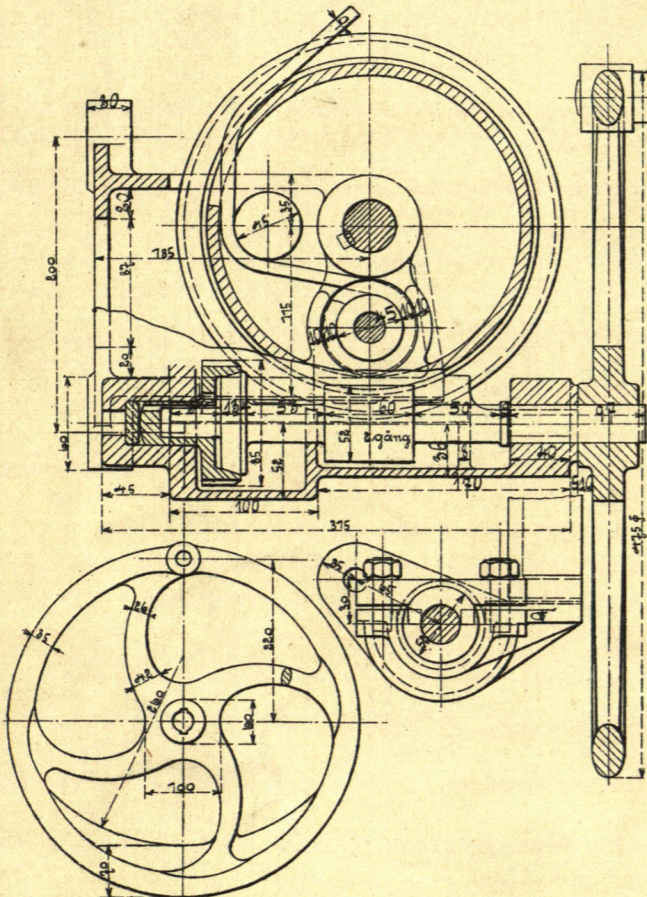


Fig. 3.

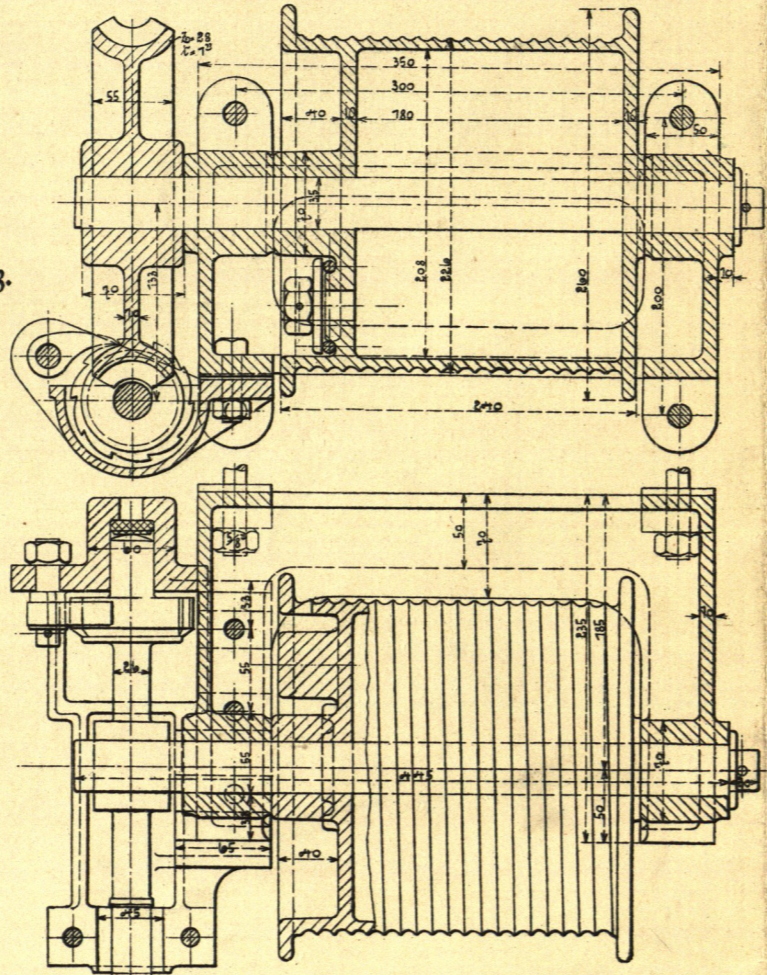


Fig. 4.

Wandwinde von 1000 kg Tragkr.  
v. G. Becker, Berlin

1:9

Consolwinde  
von 250 kg Tragkr.

v. G. Becker, Berlin

1:5

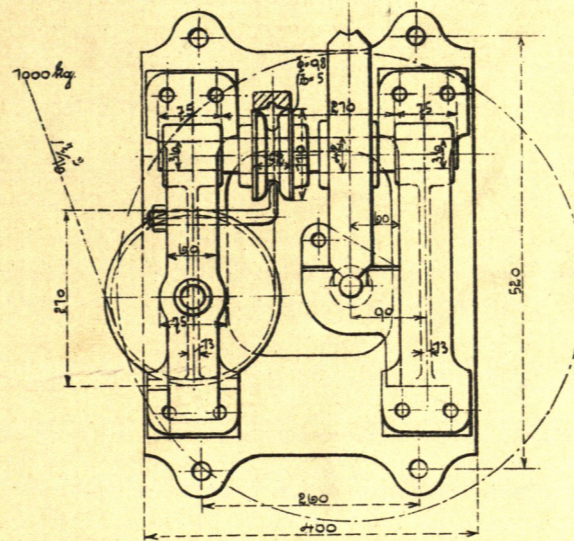


Fig. 2.

Laufwinde von 5000 kg Tragkr.

v. Ver. Maschf. Augsburg & Maschbg. Nürnberg

1:25

