

Schneckenkasten von 680 mm lichte Weite
v. L. Stuckenholz, Wetter a. d. R.

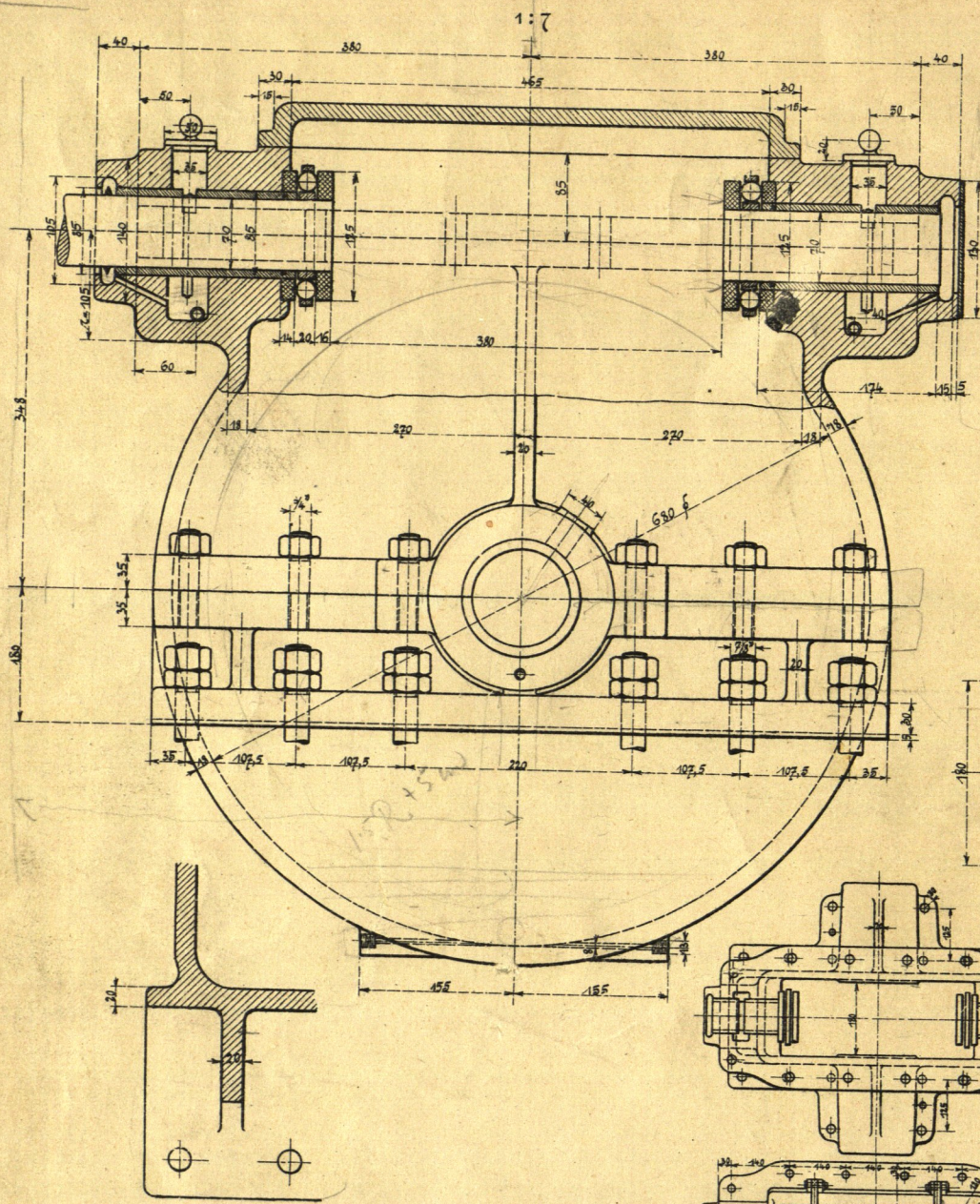
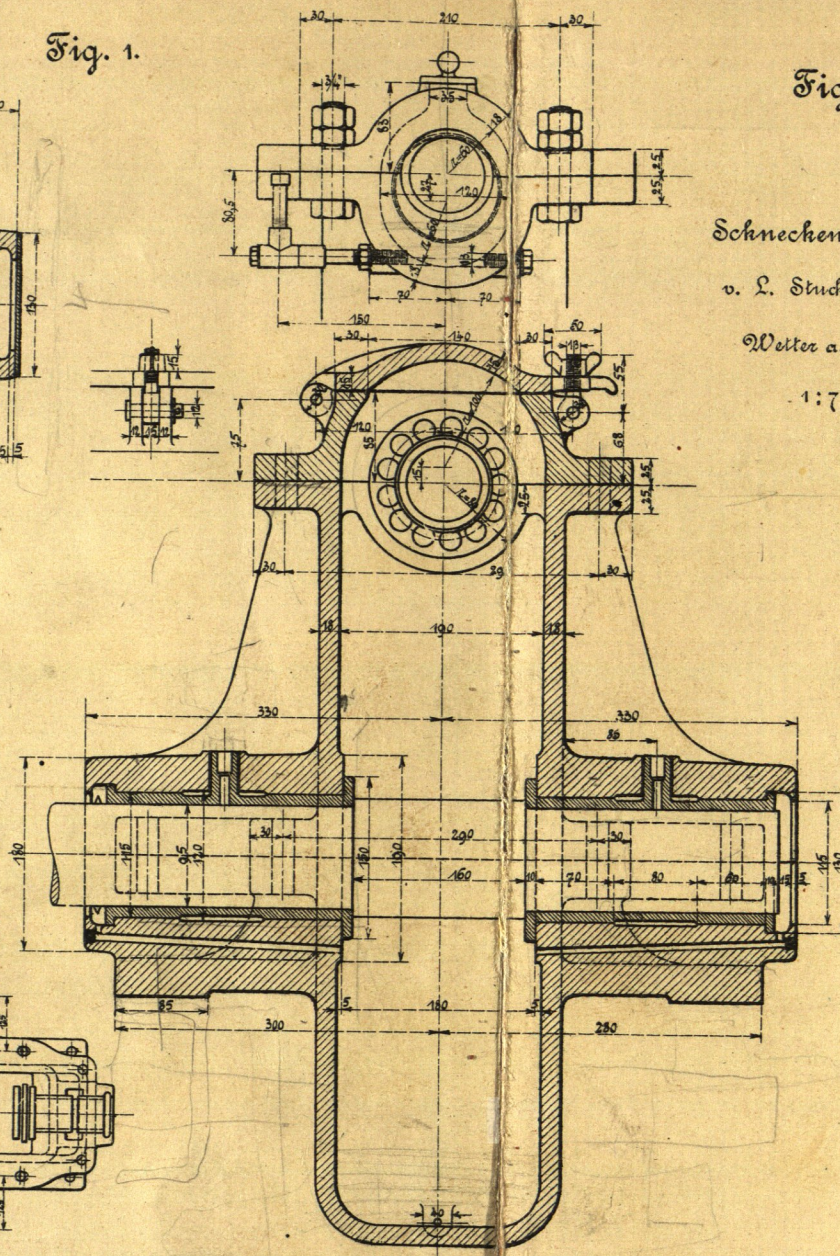
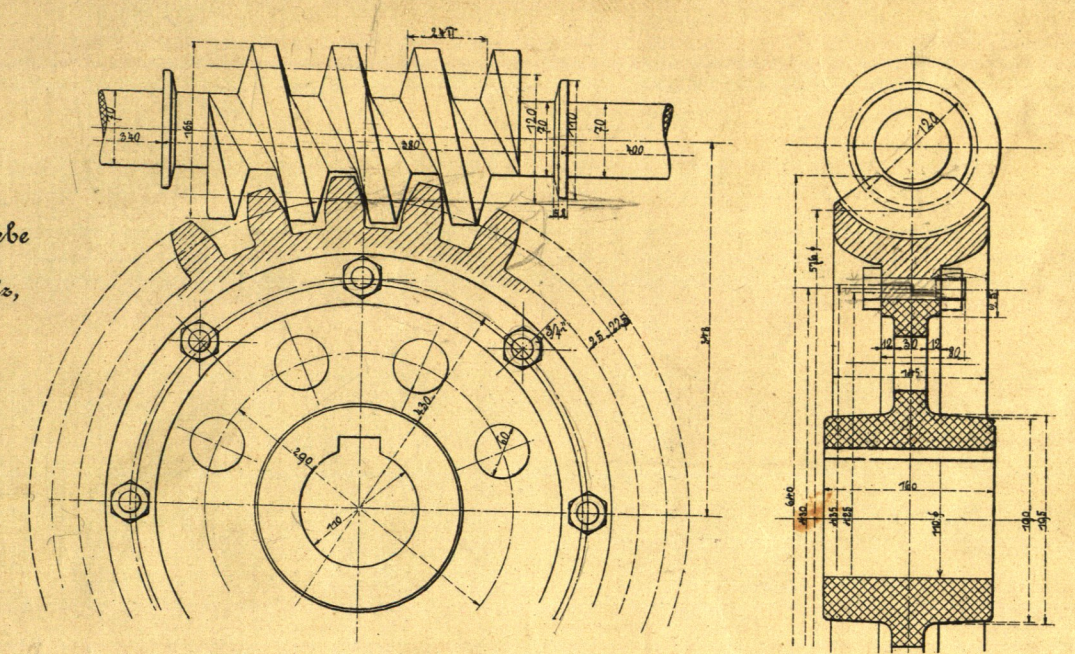


Fig. 1.

Fig. 2.
Schneckengetriebe
v. L. Stuckenholz,
Wetter a. d. R.



1:7



Schneckenkasten
v. Compagnie International d'Electricité, Liège
1:5

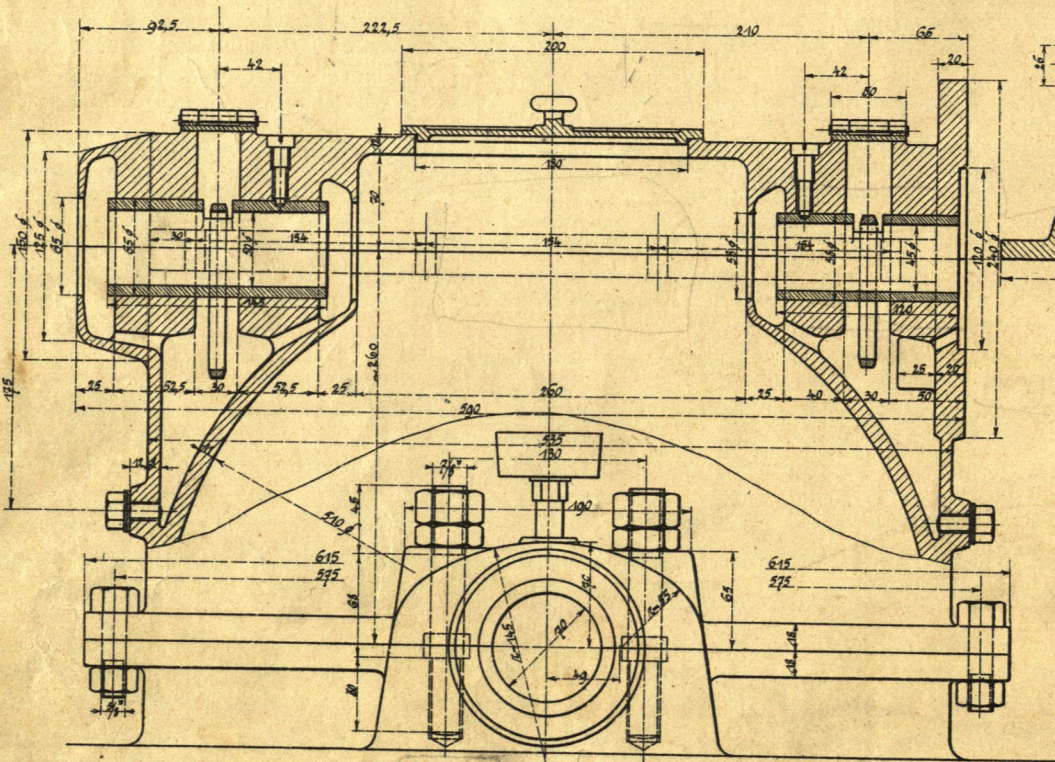


Fig. 4.

Fig. 3.
Schneckenlagerung
v. J. Loosenhausen, Düsseldorf
1:5
Schnecke 2-gängig
 $t = 1\frac{1}{2}$
Schneckenrad $D = 80$
 $t = 1\frac{1}{2}$

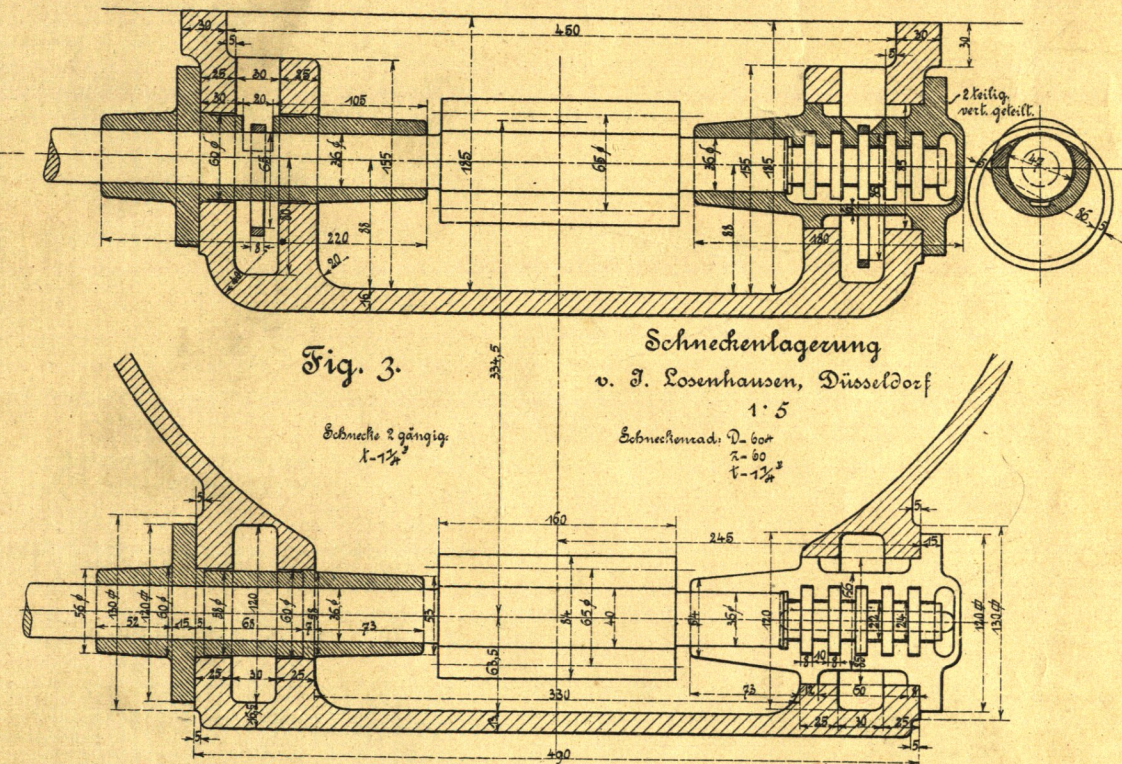


Fig. 5.
Schneckenopulager
v. Compagnie International d'Electricité, Liège
1:5

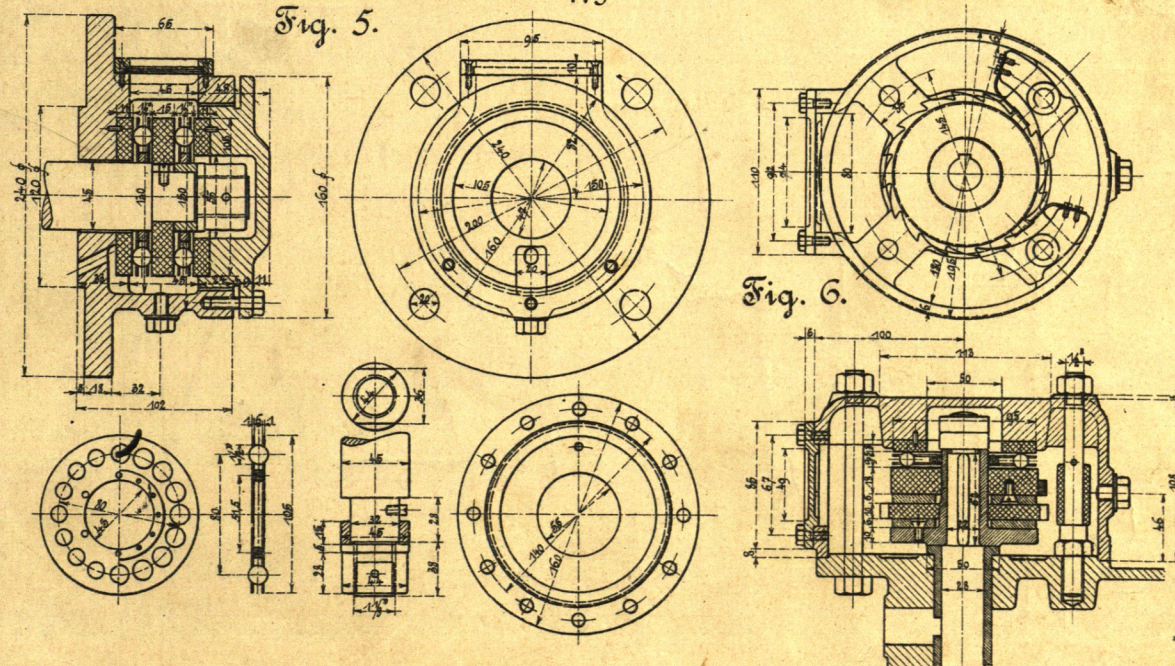


Fig. 6.