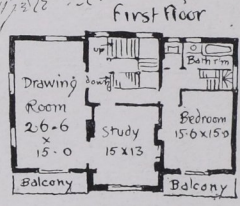
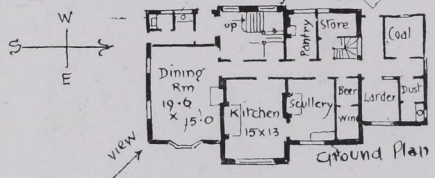
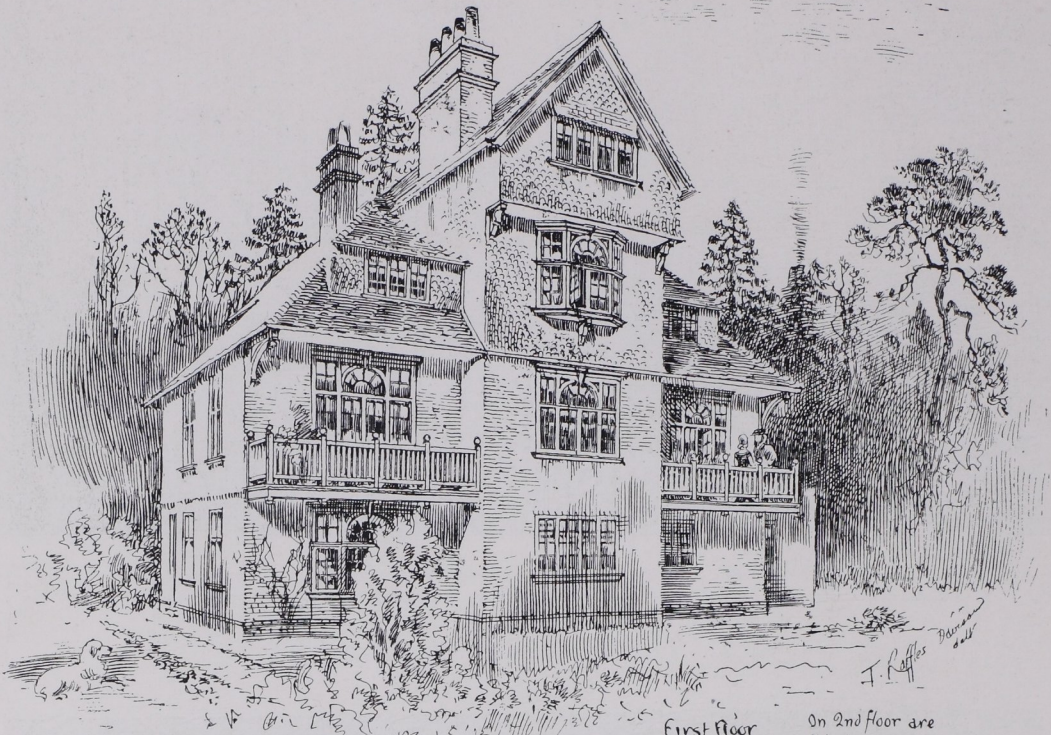


A SMALL COUNTRY HOME: PLANS AND EXTERIOR DESIGN



On 2nd floor are
5 bedrooms
& over that
2 attic bedrooms
& box room

HOUSE BUILT FOR THE ASCOT AND SUNNINGDALE ESTATE. THE WALLS ARE PARTLY OF RED BRICK AND PARTLY HUNG WITH TILES; THE ROOF ALSO IS COVERED WITH TILES

Basil Champneys, B.A., Architect