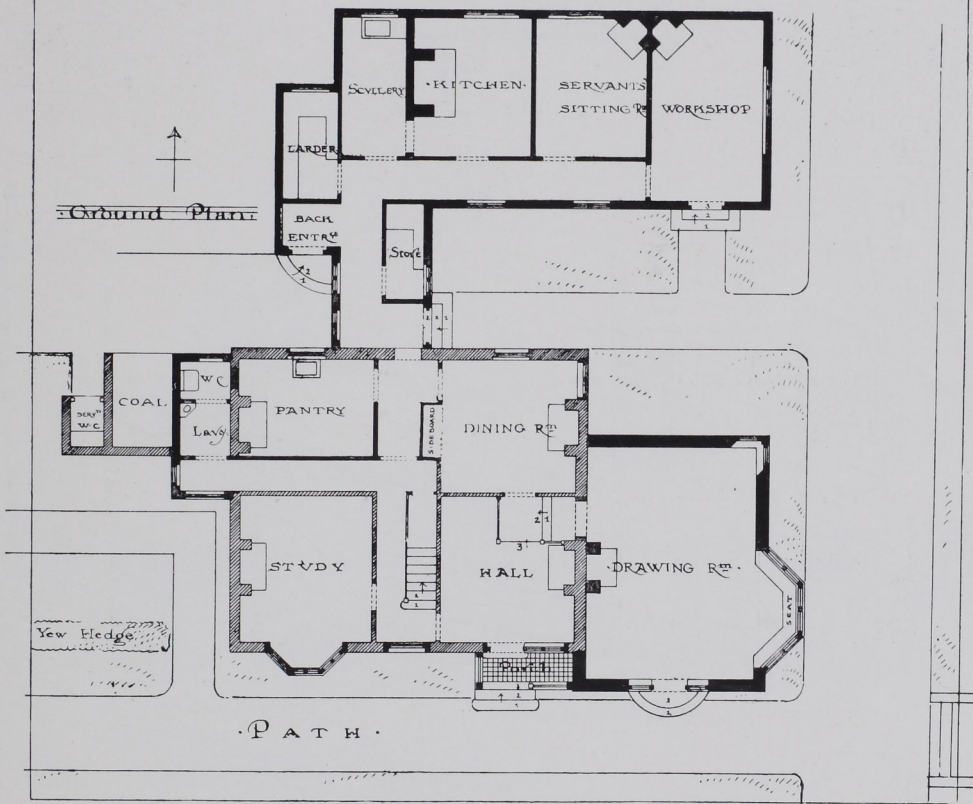


A SMALL COUNTRY HOUSE IN KENT

The Millhouse, Four Elms, Kent. Alterations & Additions.
 Scale of 1" = 30' Feet. Gerald C. Horsley, Architect.



Front Elevation.



MATERIALS: BRICK WALLS AND ROUGHCAST A SLATE ROOF TO MATCH THE EXISTING ONE, LEAD GLAZING AND IRON CASEMENTS

Gerald C. Horsley, F.R.I.B.A., Architect