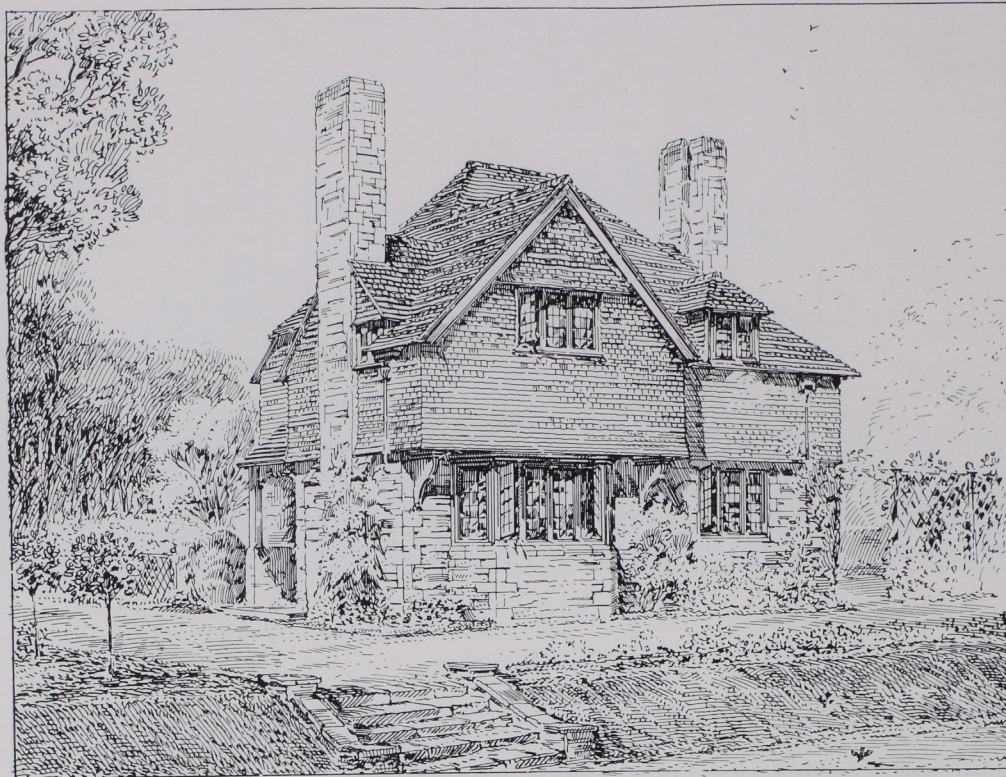
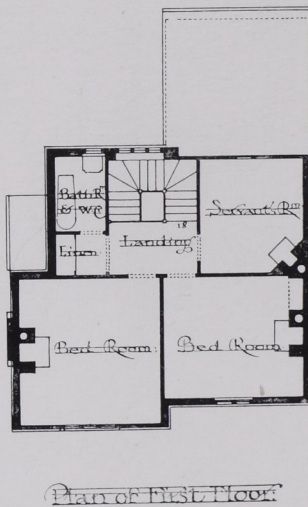
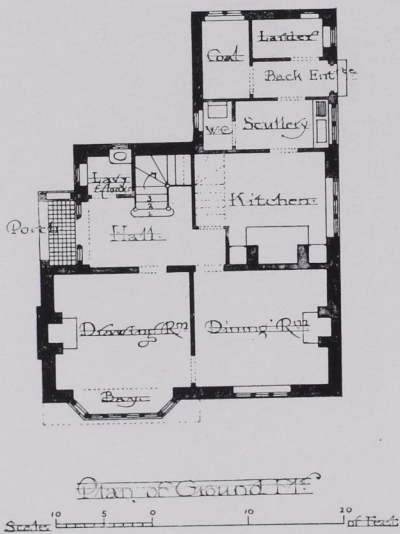


A SMALL COUNTRY HOUSE IN YORKSHIRE



House at Thornton-le-dale:

Gerald C. Horsley, Arch^t



THIS YORKSHIRE HOME IS BUILT PARTLY OF LOCAL STONE AND PARTLY OF RED TILES FROM THE DISTRICT

Gerald C. Horsley, F.R.I.B.A., Architect